

## Product datasheet for **RG229044**

### ZNF268 (NM\_001165881) Human Tagged ORF Clone

#### Product data:

Product Type:	Expression Plasmids
Product Name:	ZNF268 (NM_001165881) Human Tagged ORF Clone
Tag:	TurboGFP
Symbol:	ZNF268
Synonyms:	HZF3
Mammalian Cell Selection:	Neomycin
Vector:	pCMV6-AC-GFP (PS100010)
E. coli Selection:	Ampicillin (100 ug/mL)



[View online »](#)

**ORF Nucleotide Sequence:**

>RG229044 representing NM\_001165881  
 Red=Cloning site Blue=ORF Green=Tags(s)

TTTTGTAATACGACTCACTATAGGGCGGCCGGGAATTCGTCGACTGGATCCGGTACCGAGGAGATCTGCC  
 GCC**CGGATCGCC**

ATGGCCACCAGGGTCCGGACAGCTTCTATTTGGGTCCACCTCTCCAAGAACGAAACAGTTCATGGGATA  
 GGATCAGAAAGCTCCAAGGTCAGGAATCCATCTTGGGCCAAGGGACTCCTGGTCTGCAACCTCTCCCTGG  
 AACACCCAGGCAGAAGCAGAAGAGTCGCAAGATAGAGAAAAGTCCCTAGAGTGGCTGTTTATTTCCCAAGAG  
 CAGCCAAAAATCACCAAGTCTGGGGACCTTTGTCATTTCATGGATGTGTTTGTGGATTTTACCTGGGAGG  
 AGTGGCAGCTGCTAGACCCAGCACAGAAGTGCCTGTACAGGAGTGTGATGTTGGAGAACTATAGCAACCT  
 GGTGTCCCTAGGGTACCAACACACCAACCTGATATCATCTTCAAGTTGGAACAAGGAGAAGAGCTGTGT  
 ATGGTGCAGGCCAAGTCCAAATCAGACCTGTCCAAACACAGTCTGGAAAATTGATGATCTTATGGATT  
 GGCATCAGGAAAAAAGACAAGCTGGGAAGTACGGCAAAAAGCTTTGAATGCACTACATTTGGAAAACCT  
 ATGTCTTCTTAGTACAAAGTATCTTTCAAGACAAAACCTCATAAATGTGGCAGCATGGAAAGAGTTTG  
 AAATATATAGATTTCACTAGTGATTATGCTAGAAAATAATCCTAATGGGTTTCAGGTACATGGAAAATCAT  
 TCTTCCATTCTAAACATGAGCAAACCTGTTATTGGAATAAAATACTGTGAAAGTATTGAATCTGAAAAAC  
 CGTCAATAAGAAATCGCAACTTATGTGCCAACAAATGTATATGGGCGAAAAACCTTTGGATGCAGCTGT  
 TGTGAGAAAGCCTTCAGCAGCAAGTACACCTTCTAGTGCATCAGCAAACCTATGCCGAAGAGAAAACCTT  
 ATGGTTGTAATGAATGTGGGAAAGACTTCAGTAGTAAATCATACCTCATTGTACATCAGAGAATTCATAC  
 AGGAGAGAAACTACATGAATGCAGTGAATGCAGGAAAACATTAGTTTCCATTACAGCTTGTATACAT  
 CAGAGAATTCACACAGGTGAGAATCCCTATGAGTGTGTAATGTGGGAAAGTCTTCAGTAGGAAAGACC  
 AGCTTGTGTTTACACCAGAAAACCTATTCCAGGACAGAAAACCATATGTGTGAATGAATGTGGAAAGCTTT  
 TGGTTTAAAAATCACAGCTCATTATACATGAAAGAATTACATACAGGAGAGAAAACCATATGAATGCAATGAA  
 TGTGAGAAAGCCTTTAATACAAAGTCAAACCTTATGGTACATCAGAGAACCATACAGGGGAGAAAACCTT  
 ATGTTTGTAGTGATTGTGAAAAAGCCTTTACATTCAGTACAGCTCATTGTACATCAGGGGATTACACAC  
 AGGAGTAAAGCCCTATGGGTGATTTCAGTGTGGTAAAGGATTTCAGTTTGAATACAGCTCATTGTACAT  
 CAGAGAAGTACACAGGAATGAAACCTTATGTATGCAATGAATGTGGCAAAGCCTTCAGGAGCAAGTCA  
 ACCTTATTATACATACAAGGACTCATAACAGGAGAAAAACTCCATGAATGCAACAATTGTGGGAAAGCCTT  
 CAGTTTTAAATCACAGCTCATTATACATCAGAGGATTACATACAGGAGAGAAACCCCTATGAATGCCATGAA  
 TGTGGGAAAGCCTTCAGTCGAAATACAGCTTATTTACACCAGAGAACTCATGCAGGAGAGAAAGCCTT  
 ATGAATGCACCGACTGTGAAAGCCTTTTGGTTTAAAGTACAGCTTATTATACACCAGAGAACTCATA  
 AGGGGAGAAACCTTTGAATGTAGTGAGTGTGAGAAAGCCTTTAATACAAAGTCAAACCTGATTGTACAT  
 CAGAGAACTCATAACAGGAGAGAAAACCTATAGTTGTAATGAATGTGAAAAAGCCTTTACGTTCAAATCAC  
 AGCTCATTGTACATAAAGGAGTGCACACTGGAGTAAAACCTATGGATGCAGTCAATGTGCAAAAACCTT  
 TAGTTTGAAGTCCCAGCTCATTGTACATCAGAGAAGTACACAGGAGTAAAACCATATGGATGCAGTGAG  
 TGTGGGAAAGCCTTCAGGAGCAAGTACACCTTATTATACATATGAGAACTCATAACAGGAGAGAAAACCC  
 ATGAGTGCAGGGAATGCGGGAAATCCTTTAGTTTCAATTCACAACCTCATTGTGCATCAGAGAATTCACAC  
 AGGAGAAAAATCCCTATGAATGCAGTGAATGTGGGAAAGCCTTTAATAGGAAAGACCAGCTCATTTCACAT  
 CAGCGAACTCATGCAGGGGAAAAGCCTTATGGGTGCAGTGAATGTGGGAAAGCTTTTAGCAGCAAGTCA  
 ACCTAATTATACATGAGAACTCATTACAGGTGAAAAACCATATGAATGAATGAATGTGGGAAAGCCTT  
 CATTGAAAACTACTACTCATTGTACATGAGCGAACTCATGCAGGGGTCAACCCTTATAAATGCAGTCAA  
 TGTGAGAAATCCTTCAGTGGGAAATTACGCCTTCTGTACACCAGAGAATGCACACAAGAGAGAAAACCAT  
 ATGAATGCAGTGAGTGTGAAAAAGCCTTCATTAGGAATTCTCAACTCATTGTACATCAAAGAACTCATT  
 AGGAGAGAAAACCCCTATGGGTGCAATGAATGTGGGAAAACCTTCTCTCAAAAATCAATTCTCAGTGCACAT  
 CAGAGAACACATACAGGAGAGAAAGCCTTGAAGTGCAGTGAATGTGGGAAAGCCTTTTGTGGAAGTCA  
 AGCTCATTATGCATCAGAGAACTCATGTAGATGACAAACAT

**ACGCGT**ACGCGGCCGCTCGAG – GFP Tag – GTTTAA

**Protein Sequence:** >RG229044 representing NM\_001165881  
 Red=Cloning site Green=Tags(s)

MATRVRTASIWVPLQERNSSWDRIRKLQGQESILGQGTPLQLPGTPRQKQKSRRIEKVLEWLFISQE  
 QPKITKSWGPLSFMDVFDFTWEEWQLLDPAQKCLYRSVMLNYSNLVSLGYQHTKPDIIIFKLEQGEELC  
 MVQAQVNPQTCPNTVWKIDDLMDWHQENKDKLGSTAKSFECTTFGKLCLLSTKYL SRQKPHKCGTHGKSL  
 KYIDFTSDYARNNPNGFQVHGKSFHSHKEQTVIGIKYCESIESGKTVNKKSQLMCQQMYMGEKPFGCSC  
 CEKAFSSKSYLLVHQQTHAEKPYGCNECGKDFSSKSYLIVHQRIHTGEKLHECSECRKTF SFHSQLVIIH  
 QRHTGENPYECECGKVF SRKDQLVSHQKTHSGQKPYVCNECGKAFGLKSQLIHERIHTGEKPYECNE  
 CQKAFNTKSNLMVHQRTHTGEKPYVCSDCGKAFTFKSQLIVHQGIHTGVKPYGCIQCCKGKSLKSQLIVH  
 QRSHTGMKPYVCNECGKAFRSKSYLIIHTRTHTGEKLHECNCGKAFSFKSQLIIHQRIHTGENPYECHE  
 CGKAFSRKYQLISHQRTHAGEKPYECTDCGKAFGLKSQLIIHQRTHTGEKPFECSECQKAFNTKSNLIVH  
 QRHTHTGEKPYSCNECGKAFFKSQLIVHKGVHTGVKPYGCSQCAKTFSLKSQLIVHQRSHTGVKPYGCSE  
 CGKAFRSKSYLIIHMRHTHTGEKPHCRECGKSFNSQLIVHQRIHTGENPYECSECQKAFNRKQDLISH  
 QRTHAGEKPYGCSECQKAFSSKSYLIIHMRTHSGEKPYECNECGKAFIWKSLIVHERTHAGVNPYKCSQ  
 CEKSFSGKLRLLVHQRMHTREKPYECSECQKAFIRNSQLIVHQRTHTSGEKPYGCNECGKTF SQKSILSAH  
 QRHTHTGEKPKCTECGKAF CWKSQLIMHQRTHTVDDKH

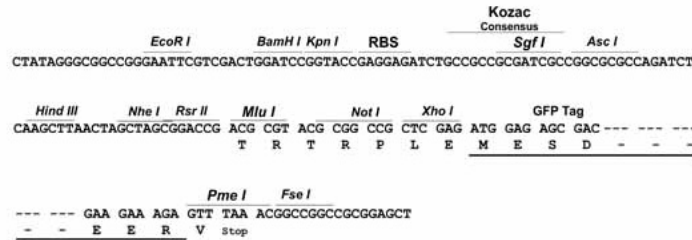
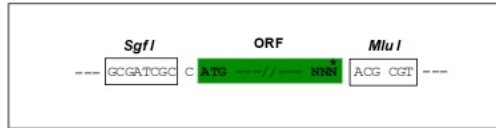
TRTRPLE – GFP Tag – V

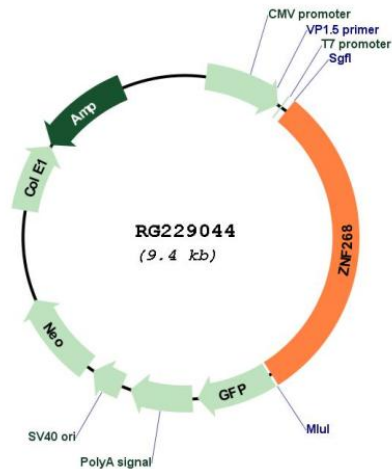
**Restriction Sites:**

SgfI-MluI

**Cloning Scheme:**

Cloning sites used for ORF Shuttling:



**Plasmid Map:**


**ACCN:** NM\_001165881

**ORF Size:** 2841 bp

**OTI Disclaimer:** The molecular sequence of this clone aligns with the gene accession number as a point of reference only. However, individual transcript sequences of the same gene can differ through naturally occurring variations (e.g. polymorphisms), each with its own valid existence. This clone is substantially in agreement with the reference, but a complete review of all prevailing variants is recommended prior to use. [More info](#)

**OTI Annotation:** This clone was engineered to express the complete ORF with an expression tag. Expression varies depending on the nature of the gene.

**Components:** The ORF clone is ion-exchange column purified and shipped in a 2D barcoded Matrix tube containing 10ug of transfection-ready, dried plasmid DNA (reconstitute with 100 ul of water).

**Reconstitution Method:**

1. Centrifuge at 5,000xg for 5min.
2. Carefully open the tube and add 100ul of sterile water to dissolve the DNA.
3. Close the tube and incubate for 10 minutes at room temperature.
4. Briefly vortex the tube and then do a quick spin (less than 5000xg) to concentrate the liquid at the bottom.
5. Store the suspended plasmid at -20°C. The DNA is stable for at least one year from date of shipping when stored at -20°C.

**RefSeq:** [NM\\_001165881.3](#)

**RefSeq Size:** 5632 bp

**RefSeq ORF:** 2844 bp

**Locus ID:** 10795

**UniProt ID:** [Q14587](#)

**Cytogenetics:** 12q24.33

**Protein Families:** Transcription Factors

**Gene Summary:** Isoform 1: Acts as a transcriptional repressor. Inhibits erythroid differentiation and tumor cell proliferation. Plays a role during ovarian cancer development and progression.  
[UniProtKB/Swiss-Prot Function]