

Product datasheet for **RG229015**

EIF4ENIF1 (NM_001164502) Human Tagged ORF Clone

Product data:

Product Type:	Expression Plasmids
Product Name:	EIF4ENIF1 (NM_001164502) Human Tagged ORF Clone
Tag:	TurboGFP
Symbol:	EIF4ENIF1
Synonyms:	4E-T; Clast4
Mammalian Cell Selection:	Neomycin
Vector:	pCMV6-AC-GFP (PS100010)
E. coli Selection:	Ampicillin (100 ug/mL)



[View online »](#)

**ORF Nucleotide
Sequence:**

>RG229015 representing NM_001164502
 Red=Cloning site Blue=ORF Green=Tags(s)

TTTTGTAATACGACTCACTATAGGGCGGCCGGAATTCGTCGACTGGATCCGGTACCGAGGAGATCTGCC
 GCC**CGATCGCC**

ATGGATAGGAGAAGTATGGGTGAAACAGAAAGTGGAGATGCTTTCCTTGACCTGAAGAAGCCTCCTGCCT
 CCAAATGCCCCATCGCTATACAAAAGAAGAACTCTTGGATATAAAAGAACTCCCCATTCCAAACAGAG
 GCCTTCATGCCTTCTGAAAAATATGACAGTGATGGTGTCTGGGACCCTGAGAAGTGGCATGCCTCTCTC
 TACCCAGCTTCAGGGCGGAGCTCACCAGTGAAAGTCTGAAGAAAGAGTTGGATACAGACCGCCTTCCC
 TGGTGCGCAGGATAGTAGGTATAGTAGAGTGCAATGGAGGAGTGGCCGAAGAGGATGAAGTGGAGGTCAT
 CCTTGCACAGGAGCCTGCGGCTGATCAGGAAGTGCCAAGGGATGCTGTCTTGCTGAGCAGTCCCAGGA
 GACTTTGACTTTAATGAGTTCTTAACCTTGATAAGGTGCCATGCTTGGCTTCGATGATAGAAGATGTTT
 TGGGAGAAGGGTCAGTCTCTGCCAGTCGGTTCAGTAGGTGGTTCTCTAACCCGAGCAGATCAGGAAGCCG
 ATCCAGCAGTCTTGGGTCAACACCACATGAAGAGCTAGAGAGACTTGCAGGTCTGGAGCAAGCCATCCTC
 TCTCTGGACAGAACTCGGGGAATTACTTTGCTCCTATACCATTGGAAGACCATGCTGAAAAATAAGTGG
 ATATTTTAGAAATGCTACAGAAAGCCAAAGTGGATTTGAAACCTCTTCTTCCAGCCTTCTGCAATAA
 AGAAAACTTAAAGAAAGCTCACATTCAGGGGTGTGCTTTCAGTGGAGGAGGTAGAAGCAGGTCTGAAG
 GGCTTGAAGGTTGACCAGCAAGTGAAGAATTCACTCCCTTCATGGCAGAACACCTAGAAAGACCTTGA
 GTGCCGTAAACCAACATCGACAACCTGAAGAAAGACGGAGACATGACTGCGTTCAACAAGCTAGTGAGCAC
 AATGAAGCGAAACCTTGAAGCCATTTGATGTCCCCTGCTGAGATTCCAGGCCAGCCTGTCCCTAAGAAC
 ATCCTGCAGGAACTTCTGGTCAACCAGTTCAGAGACCTGCTTCTTCCAATCTTCTGAGTGGCCTTATGG
 GGAGCTTGGAGCCTACAACATCTTACTGGGCCAAAGAGCACCTCTCCCTGTCACAGGTGTTTCA
 AACTCGAGCAGCCTCAGCTGACTACCTTCGCCAAGAATACCATACCAATTGGTTTTCACACCAGGACCA
 CAGCAGCTACTCGGAGATCCATTCCAAGGCATGCGCAAACCCATGAGCCCATCACAGCCAGCAGATGA
 GCCAGCTGGAGTTGCAACAGGCAGCTTTAGAAGGGCTGGCCTTGCACATGACCTTGCTGTACAGGCAGC
 AAATCTTACCAGCCTGGTTTTGGCAAACCACAGGTGGACAGAACCAGAGATGGATTAGAAACAGGCAA
 CAGCGAGTGACCAAGTACCAGCACCCGTGCATCGAGGGAATTCCTTCCCTGCCCTGCTGCCTCCA
 TCACAAGCATGCTTCTCCTTCTTACCCTACCTCAGTGATTCTGAAGATGTACGAGAGCAAAGAGAA
 AAGCAAGGAGGAGCCAGCATCTGAAAAGCAGCTCTTGGTGACAGTAAAGAGGATACTCAGAAGGCCAGT
 GAAGAAAACCTCCTGTATCCAGTCTGTACCCAGTGCCGATCGAGACTTCTCCCACTACAAATTCCA
 AACTGTCAGCATTACAGAGGTCTTCGTGTTCCACCCACTGTCCAGGCCAACCGTTACACCAAAGAACA
 AGATTATCGACCTAAAGCAACTGGGAGAAAAACCCACCTTGGCATCCCCAGTTCCTACAACACCTTTT
 CTCCGCCCTGTCCACCAAGTTCCCTTGTCCCCATGTCCCTATGGTTAGGCCTGCTCACCAGCTTACC
 CAGGGTTGGTACAGAGGATGCTGGCCCAGGGAGTACATCCACAGCATCTTCCAAGTTTGCTCAAACCTGG
 TGTGCTTCTCCTGGGATGGACTTGAGTCATTTACAGGGAATATCTGGCCCCATCCTGGGTGAGCCCTT
 TACCCTTACCTGCTGCTAGTACCCTCTCTTAAACCCTGTCTGGAACACCTCTGCATCTGGCAATGG
 TGCAACAGCAGCTACAGCGCTCAGTCTGCATCCTCCAGGCTCTGGTCCCATGCAGCAGCTGTGAGCGT
 TCAGACAACCCCTCAGAACGTGCCAGCCGGTCAGGCCCTGCCACATGCACTCCAGCTGGAGCATCGC
 CCCAGCCAGAGGAGCAGTCCCCTGTGGGCTTGCCAAATGGTTTGGCTCAGATGTCTACAGCAACCCC
 TGCCCTCATGCCCGCCAAAGTTATCAGTGTAGATGAATTGGAATACCGACAG

ACGCGTACGCGGCCGCTCGAG – GFP Tag – GTTTAA

Protein Sequence: >RG229015 representing NM_001164502
Red=Cloning site Green=Tags(s)

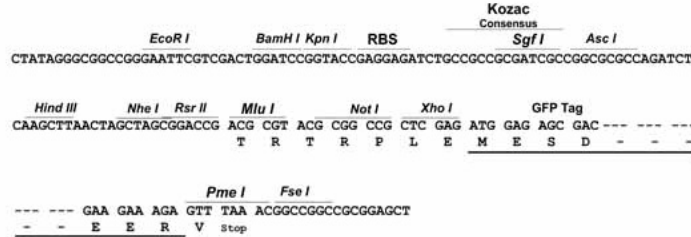
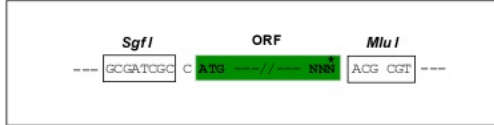
MDRRSMGETESGDAFLDLKPPASKCPHRYTKEELLDIKELPHSKQRPSCLSEKYDSGVDPEKWHASL
YPASGRSSPVESLKKELDTDRPSLVRRIVGIVECNGGVAEEDEVEVILAQEPAAQEVPRDAVLPEQSPG
DFDFNEFFNLDKVPCLASMIEDVLGEGSVSASRF SRWFSNPSRSGSRSSSLGSTEPHEELERLAGLEQAIL
SPGQNSGNYFAPIPLEDHAENKVDILEMLQKAKVDLKPLLSSL SANKEKLESSHSGVVL SVEEVEAGLK
GLKVDQQVKNSTPFMAEHLEETLSAVTNNRQLKKDGMTAFNKL VSTMKRNL ESHLMSPA EIPGQVPVKN
ILQELLGQPVQRPASSNLLSGLMGSLEPTTSLLGQRAPSPPLSQVFQTRAASADYLRPRIPSPIGFTPGP
QQLLGDPFQGMRKPMSPITAQQMSQLELQQAALGLALPHDLAVQAANFYQPGFGKPVDRTRDGFRRNQ
QRVTKSPAPVHRGNSSSPAPAASITSMSPSFTPTSVIRKMYESKEKSKEEPASGKAALGDSKEDTQKAS
EENLLSSSSVPSADRDSSPTTNSKLSALQRSSCSTPLSQANRYTKEQDYRPKATGRKTPTLASPVPTTFF
LRPVHQVPLVPHVPMVRPAHQLHPGLVQRMLAQGVHPQHLP SLLQTGVLPPGMDLSHLQGISGPILGQPF
YPLPAASHPLLNPRPGTPLHLAMVQQQLQRSVLHPPGSGSHAAAVSVQTTQNVPSRSGLPHMHSQLEHR
PSQRSSSPVGLAKWFGSDVLLQQLPSMPAKVISVDELEYRQ

TRTRPLE - GFP Tag - V

Restriction Sites: Sgfl-MluI

Cloning Scheme:

Cloning sites used for ORF Shutting:



ACCN: NM_001164502

ORF Size: 2433 bp

OTI Disclaimer: The molecular sequence of this clone aligns with the gene accession number as a point of reference only. However, individual transcript sequences of the same gene can differ through naturally occurring variations (e.g. polymorphisms), each with its own valid existence. This clone is substantially in agreement with the reference, but a complete review of all prevailing variants is recommended prior to use. [More info](#)

OTI Annotation: This clone was engineered to express the complete ORF with an expression tag. Expression varies depending on the nature of the gene.

Components: The ORF clone is ion-exchange column purified and shipped in a 2D barcoded Matrix tube containing 10ug of transfection-ready, dried plasmid DNA (reconstitute with 100 ul of water).

Reconstitution Method:

1. Centrifuge at 5,000xg for 5min.
2. Carefully open the tube and add 100ul of sterile water to dissolve the DNA.
3. Close the tube and incubate for 10 minutes at room temperature.
4. Briefly vortex the tube and then do a quick spin (less than 5000xg) to concentrate the liquid at the bottom.
5. Store the suspended plasmid at -20°C. The DNA is stable for at least one year from date of shipping when stored at -20°C.

RefSeq: [NM_001164502.1](#), [NP_001157974.1](#)

RefSeq Size: 3182 bp

RefSeq ORF: 2436 bp

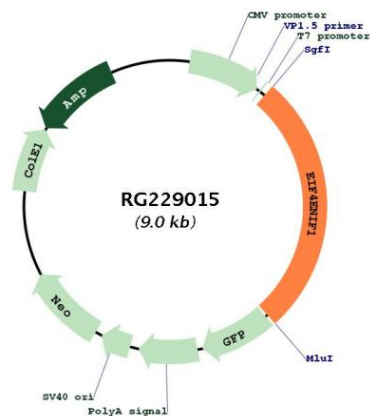
Locus ID: 56478

UniProt ID: [Q9NRA8](#)

Cytogenetics: 22q12.2

Gene Summary: The protein encoded by this gene is a nucleocytoplasmic shuttle protein for the translation initiation factor eIF4E. This shuttle protein interacts with the importin alpha-beta complex to mediate nuclear import of eIF4E. It is predominantly cytoplasmic; its own nuclear import is regulated by a nuclear localization signal and nuclear export signals. Multiple transcript variants encoding different isoforms have been found for this gene. [provided by RefSeq, Aug 2009]

Product images:



Circular map for RG229015