

Product datasheet for **RG229014**

DIP2A (NM_001146115) Human Tagged ORF Clone

Product data:

Product Type:	Expression Plasmids
Product Name:	DIP2A (NM_001146115) Human Tagged ORF Clone
Tag:	TurboGFP
Symbol:	DIP2A
Synonyms:	C21orf106; DIP2
Mammalian Cell Selection:	Neomycin
Vector:	pCMV6-AC-GFP (PS100010)
E. coli Selection:	Ampicillin (100 ug/mL)



[View online »](#)

ORF Nucleotide Sequence:

>RG229014 representing NM_001146115
 Red=Cloning site Blue=ORF Green=Tags(s)

TTTTGTAATACGACTCACTATAGGGCGGCCGGGAATTCGTCGACTGGATCCGGTACCGAGGAGATCTGCC
 GCC**CGGATCGCC**

ATGGCTGACCGCGGGTGCCCGCTGGAGGCGGCCCGCTGCCTGCCGAGGTGCGGGAGAGCCTGGCTGAGC
 TGGAGCTGGAGCTGTCGGAAGGTGACATCACTCAAAAAGGATATGAAAAGAAAAGGGCAAAGCTGCTTGC
 ACGTTATATACCGCTTATTCAAGGAATAGACCCATCTCTGCAAGCAGAGAATAGAATTCCTGGGCCCTCA
 CAAACCACGGCCGCTGCACCCAAGCAGCAGAAGTCTCGGCCACCGCCTCGAGGGATGAGCGCTTCCGGT
 CAGATGTCACACTGAAGCCGTGCAAGCAGCTTTGGCCAAATACAAGAGAGGAAGATGCCTATGCCTTC
 GAAGAGACGTTCTGTCTTGTGCATTCTGTGGAACTACACCCCTCCAGACACGTCGTCTGCCTCA
 GAAGATGAGGGCTCTTACGGCGACCCGGGCGACTCACCTCCACTCCGCTCCAGAGCCATTCCAGCGTCG
 AGCCCTGGCTCGACCGGGTCATTAGGGCTCGTCCACCTCATCCTCTGCATCCTCCACCTCATCTACCC
 GGGAGGGAGACCACACTGCTCCAGTGTGCAGCCACCGGGGGCCCGCTACCCTGCACCTCGCA
 GGCTCGAGGCCACACCACATAGGTGTCCCTGTGAACAGCAGAGTGTCTCAAAAATCCAGCAGCTTC
 TGAACACCCTGAAGAGGCCAAAGCGCCCTCCACTGAAGGAGTTCTTTGTGGATGATTTTGAAGAAATGTT
 GGAAGTTCAGCAACCAGATCCAAATCAGCCAAAGCCTGAGGGAAGCGAGACGAGTGTGCTGAGAGGGGAG
 CCTCTCACTGCAGGTGTCCCCGACCGCGTCTGTTGGCCACCTTGCAGCGCTGGGGCACAACACAGC
 CCAATCCCCCTGTCTGACTGCCTTGGATACTGGAAAGCCGTCTACACTCTCACCTATGGTAACT
 TTGGAGTCGGAGTTTAAACTAGCTTACTCTACTTAATAAACTGACAAGTAAGAATGAACCTCTACTT
 AAACCTGGAGACAGAGTGGCGCTCGTGTTCGGAATAGTGACCTGTGATGTTTATGTTGATTTTATG
 GGTGTCTCTGGCAGAGCTGGTTCCTGTCCCATAGAAGTGCCATTAACAAGAAAGGATGCAGGCAGCCA
 GCAGGTTGGGTTCTGCTGGGCAGCTGTGGAGTCTTCTGGCCCTGACCACAGACGCTTGTGAGAAAGGC
 CTCCCAAGGCACAGACAGGAGAGGTGGCAGCTTCAAAGTTGGCCCCGCTCTCCTGGCTAGTGATTG
 ATGGGAAGCATCTAGCCAAGCCCCAAAGGACTGGCACCTCTGGCCAGGACACAGGGACTGGGACTGC
 CTACATTGAGTATAAAACCAGCAAAGAAGGCAGTACGGTGGGGTACAGTGTCCACGCATCCCTGCTG
 GCACAGTCCCGGCTCTGACCCAGGCGTGGGGTACTCAGAAGCTGAAACATTAAACAACGCTGGATT
 TCAAAAGGGATGCTGGTCTGTGGCATGGCGTGTAAACAAGCGTCATGAACAGGATGCACGTGGTCAGCGT
 CCCCTACGCGCTGATGAAGGCGAACCCACTCTCCTGGATCCAGAAAGTGTCTTCTATAAAGCTCGGGCC
 GCGCTGGTGAAGTCGCGAGACATGCACTGGTCTCTCCTAGCTCAGCGGGCCAGAGGGACGTGAGCCTCA
 GCTCACTGCGCATGCTGATTGTGGCCGATGGTGCCAACCCGTTGGTCGATCTCCTCCTGTGACGCCTTCT
 CAACGTCTTCCAGTCCAGAGGTCTGAGGCCAGAGGTATCTGTCTTGTGCAAGTTCTCCTGAGGCGCTG
 ACTGTCGCCATCCGACAGGCCACCTGATCTGGGAGGACCACCTCCAAGAAAAGCAGTCTGTGATGAACG
 GTCTAAGTTATGGTGTTATCAGAGTGGATACTGAAGAAAGTTGTGAGTCTTACTGTTTCAAGGACGTTGG
 TCAGGTGATGCCTGGAGCTAATGTATGTGTTGTGAAGTTAGAAGTACCCTTATCTTTGTAAGAACTGAT
 GAAGTGGGAGAAATATGCGTCAGTTCAGTGAAGTGGCACAGCGTACTATGGATTGCTTGAATCACGA
 AGAATGTGTTGAGGCAGTTCGGTCCACACAGGAGGAGCACCCATCTTTCAGAGCCATTACACAGGAC
 AGGCCTGCTGGCTTTCATCGGGCCTGACAACCTGGTCTTCATCGTGGGCAAACCTGGACGGGCTGATGGTC
 ACTGGAGTTCGCAGACACAATGCAGATGACGTTGTGGCCACCGCACTGGCCGTGGAGCCCATGAAGTTTG
 TCTACAGAGGCAGG

ACGCGTACGCGGCCGCTCGAG – GFP Tag – GTTTAA

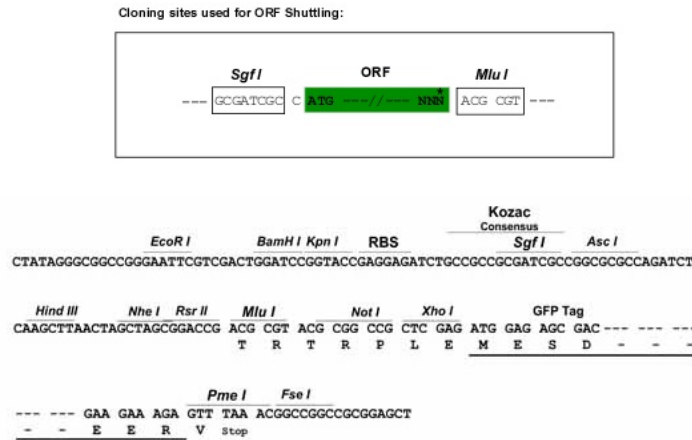
Protein Sequence: >RG229014 representing NM_001146115
 Red=Cloning site Green=Tags(s)

```
MADRGCPLEAAPLPAEVRESLAELELELSEGDITQKGYEKKRAKLLARYIPLIQGIDPSLQAENRIPGPS
QTAAAPKQKSRPTASRDERFRSDVHTEAVQAALAKYKERKMPMPKRRSVLVHSSVETYPDTSSAS
EDEGLRRPGRLTSTPLQSHSSVEPWLD RVIQGSSTSSASSTSSHPGGRPTTAPSAATPGAAATTALA
GLEAHTHIGVPVNSRVSSKIQQLLNTLKRPKRPPLKEFFVDDFEELLE VQQPDPNQPKPEGSETSVLRGE
PLTAGVPRPPSLLATLQRWGTTQPKSPCLTALD TTGKAVYTLTYGKLWSRSLKLAYTLLNKLT SKNEPLL
KPGDRVALVFPNSDPVMFMVAFY GCLLAE LVPVPIEVPLTRKDAGSQVGFLLGSCGVFLALTTDACQKG
LPKAQTGEVA AFKGWPLSWLVIDGKHLAKPPKDWHLA QDTGTGTAYIEYKTSKEGSTVGVTVSHASLL
AQCRALTQACGYSEAETL TNVLDFKRDAGLWHGVL TSVMNMHVVSVPYALMKANPLSWIQKVC FYKARA
ALVKSRDMHWSLLAQRGQRDVSLSSLRMLIVADGANPWSISSCDAFLNVFQSRGLRPEVICPCASSPEAL
TVAIRRPDLGGPPPRKAVLSMNGLSYGVIRVDTEEKLSVLT VQDVGVMPGANVCVVKLEGTPYLCKTD
EVGEICVSSSATGTAYYGLLGITKNVFEAVPVTTGGAPIFDRPFTRTGLLGFIGPDNLV FIVGKLDGLMV
TGVRRHNADDVVATALAVEPMKFVYRGR
```

TRTRPLE - GFP Tag - V

Restriction Sites: Sgfl-Mlul

Cloning Scheme:



ACCN: NM_001146115

ORF Size: 2394 bp

OTI Disclaimer: The molecular sequence of this clone aligns with the gene accession number as a point of reference only. However, individual transcript sequences of the same gene can differ through naturally occurring variations (e.g. polymorphisms), each with its own valid existence. This clone is substantially in agreement with the reference, but a complete review of all prevailing variants is recommended prior to use. [More info](#)

OTI Annotation: This clone was engineered to express the complete ORF with an expression tag. Expression varies depending on the nature of the gene.

Components: The ORF clone is ion-exchange column purified and shipped in a 2D barcoded Matrix tube containing 10ug of transfection-ready, dried plasmid DNA (reconstitute with 100 ul of water).

Reconstitution Method:

1. Centrifuge at 5,000xg for 5min.
2. Carefully open the tube and add 100ul of sterile water to dissolve the DNA.
3. Close the tube and incubate for 10 minutes at room temperature.
4. Briefly vortex the tube and then do a quick spin (less than 5000xg) to concentrate the liquid at the bottom.
5. Store the suspended plasmid at -20°C. The DNA is stable for at least one year from date of shipping when stored at -20°C.

RefSeq: [NM_001146115.2](#)

RefSeq Size: 2758 bp

RefSeq ORF: 2397 bp

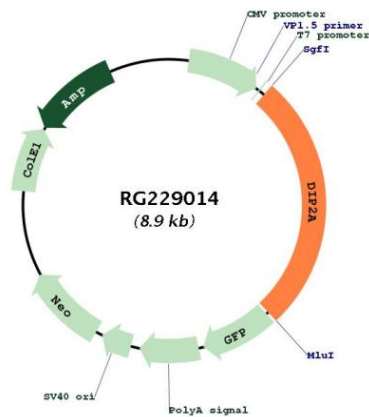
Locus ID: 23181

UniProt ID: [Q14689](#)

Cytogenetics: 21q22.3

Gene Summary: The protein encoded by this gene may be involved in axon patterning in the central nervous system. This gene is not highly expressed. Several transcript variants encoding different isoforms have been found for this gene. [provided by RefSeq, Mar 2009]

Product images:



Circular map for RG229014