

Product datasheet for **RG228989**

ZBTB20 (NM_001164344) Human Tagged ORF Clone

Product data:

Product Type:	Expression Plasmids
Product Name:	ZBTB20 (NM_001164344) Human Tagged ORF Clone
Tag:	TurboGFP
Symbol:	ZBTB20
Synonyms:	DPZF; HOF; ODA-8S; PRIMS; ZNF288
Mammalian Cell Selection:	Neomycin
Vector:	pCMV6-AC-GFP (PS100010)
E. coli Selection:	Ampicillin (100 ug/mL)



[View online »](#)

ORF Nucleotide
Sequence:

>RG228989 representing NM_001164344
Red=Cloning site Blue=ORF Green=Tags(s)

TTTTGTAATACGACTCACTATAGGGCGGCCGGAATTCGTCGACTGGATCCGGTACCGAGGAGATCTGCC
GCCCGGATCGCC

ATGACCGAGCGCATTACAGCATCAACCTTCACAACTTCAGCAATTCGCTGCTCGAGACCTCAACGAGC
AGCGCAACCGTGGCCACTTCTGTGACGTAACGGTGCGCATCCACGGGAGCATGCTGCGCGCACACCGCTG
CGTGCTGGCAGCCGCGAGCCCTTCTTCCAGGACAACTGCTGCTTGGCTACAGCGCATCGAGATCCCG
TCGGTGGTGTGAGTGCAGTCAAGGCTCATTGACTTATGTACAGCGCGTGTACAGGGTCTCGC
AGTCGGAAGCTCTGCAGATCCTCACGGCCGCGAGCATCTGCAGATCAAAACAGTCATCGACGAGTGCAC
GCGCATCGTGTACAGAACGTGGGCGATGTGTTCCCGGGATCCAGGACTCGGGCCAGGACACGCCCGCG
GGCACTCCGAGTCAGGCAGTCAGGCCAGAGCAGCGACCGAGTGGGCTACCTGCAGAGCCACCCAC
AGCACAGCGTGGACAGGATCTACTCGGCACTCTACGCGTCTCCATGCAGAATGGCAGCGCGAGCGCTC
TTTTTACAGCGGCGCAGTGGTCAAGCACCAGAGACTGCGCTCGGCTGCCCGGACCACCACATGGAA
GACCCAGCTGGATCACACGCATCCATGAGCGCTCGCAGCAGATGGAGCGCTACCTGTCCACCACCCCG
AGACCACGCACTGCCGAAGCAGCCCGCCCTGTGCGCATCCAGACCCTAGTGGGCAACATCCACATCAA
GCAGGAGATGGAGGACGATTACGACTACTACGGGCAAGGGTGCAGATCCTGGAACGCAACGAATCC
GAGGAGTGCACGGAAGACACAGACCAGGCCGAGGGCACCAGAGTGGAGCCAAAGGTGAAAGCTTCGACT
CGGGCGTCAGCTCCTCCATAGGCACCGAGCCTGACTCGGTGGAGCAGCAGTTTGGGCTGGGGCGCGCG
GGACAGCCAGGCTGAACCCACCAACCCGAGCAGGCTGCAGAAGCCCCGCTGAGGGTGGTCCGCAGACA
AACCAGCTAGAAACAGGTGCTTCTCCTCCGGAGAGAAGCAATGAAGTGGAGATGGACAGCACTGTTATCA
CTGTCAGCAACAGCTCCGACAAGAGCGTCTACAACAGCCTTCGGTCAACACGTCATCGGGCAGCCATT
GCCAAGTACCCAGCTCTACTTACGCCAGACAGAAACCCTCACAGCAACCTGAGGATGCCTCTGACCTTG
ACCAGCAACACGCAAGTCAATTGGCACAGCTGGCAACACCTACCTGCCAGCCCTTCTCACTACCCAGCCCG
CGGGCAGTGGCCCAAGCCTTCTCCTTTCAGCCTGCCACAGCCCTGGCAGGCCAGCAGCCAGTTTGT
GACAGTGTTCAGCCCGTCTGTGACCTTTACTGCACAGCTGCCAGCGCCACAGCCCTGGCCTCATCC
GCAGGCCACAGCACAGCCAGTGGGCAAGGCGAAAAAAGCCTTATGAGTGCACCTCTGCAACAAGACTT
TCACCGCAAACAGAACTACGTCAAGCACATGTTCTGACACAGGTGAGAAGCCCCACCAATGCAGCAT
CTGTTGGCGCTCCTTCTCCTAAAGGATTACCTTATCAAGCACATGGTGACACACACAGGAGTGAGGGCA
TACCAGTGTAGTATCTGCAACAAGCGCTTACCCAGAAGAGCTCCCTCAACGTGCACATGCGCCTCCACC
GGGAGAGAAGTCTACGAGTGCTACATCTGCAAAAAGAAGTTCTCTCACAAGACCCTCCTGGAGCGACA
CGTGGCCCTGCACAGTGGCAGCAATGGGACCCCCCTGCAGGCACACCCCAAGGTGCCCGCGCTGGCCCC
CCAGGCGTGGTGGCTGCACGGAGGGGACCACTTACGTCTGCTCCGTCTGCCAGCAAAGTTTGACCAAA
TCGAGCAGTTCAACGACCACATGAGGATGCATGTGTCTGACGGA

AGCGGACCGACGCGTACGCGGCCGCTCGAG - GFP Tag - GTTTAA

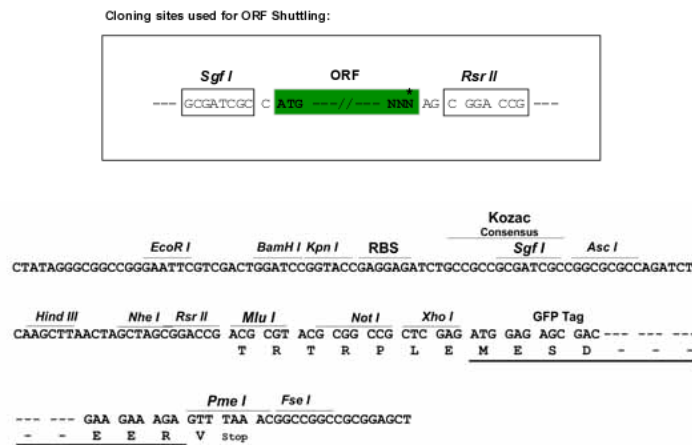
Protein Sequence: >RG228989 representing NM_001164344
 Red=Cloning site Green=Tags(s)

MTERIHSINLHNFSNSVLETLNEQRNRGHFCDVTVRIHGSMMLRAHRCVLAAGSPFFQDKLLLGYSIDIEIP
 SVVSVQSVQKLIDFMYSGLRVLSQSEALQILTAASILQIKTVIDECTRIVSQNVGDVFPGIQDSGQDTPR
 GTPESGTSQGSSDTESGYLQSHPQHSVDRIYSALYACSMQNGSGERSFYSGAVVSHHETALGLPRDHME
 DPSWITRIHERSQMERYLSTTPETTHCRKQPRPVRIQTLVGNIIHKQEMEDDYDYQGQRVQILERNES
 EECTEDTDQAEGTESEPKGESFDSGVSSSIGTEPDSVEQQFGPGAARDSQAEPTQPEQAAEAPAEGGPQT
 NQLETGASSPERSNEVEMDSTVITVSNSSDKSVLQQPSVNTSIGQPLPSTQLYLRTETLTSNLRMPLTL
 TSNTQVIGTAGNTYLPALFTTQPAGSGPKPFLFSLPQPLAGQQTQFVTVFQPLSTFTAQLPAPQPLASS
 AGHSTASGQGEKKPYECTLCNKFTAKQNYVKHMFVHTGEKPHQCSICWRSFSLKDYLKHMVTHTGVRA
 YQCSICNKRFTQKSSLNVHMRLHRGEKSYECYICKKKFHKTLLEHVALHSASNGTPPAGTPPPGARAGP
 PGVVACTEGTTYVCSVCPAKFDQIEQFNDHMRMHVSDG

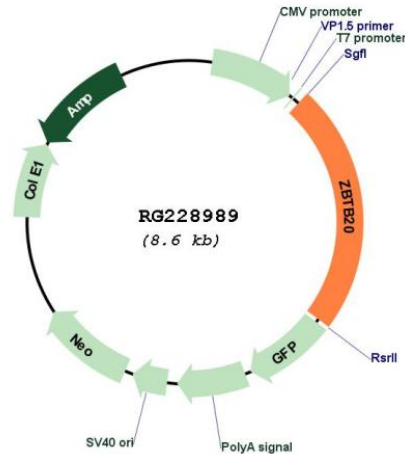
SGP TRRRLE - GFP Tag - V

Restriction Sites: SgfI-RsrII

Cloning Scheme:



Plasmid Map:



ACCN: NM_001164344

ORF Size: 2004 bp

OTI Disclaimer: The molecular sequence of this clone aligns with the gene accession number as a point of reference only. However, individual transcript sequences of the same gene can differ through naturally occurring variations (e.g. polymorphisms), each with its own valid existence. This clone is substantially in agreement with the reference, but a complete review of all prevailing variants is recommended prior to use. [More info](#)

OTI Annotation: This clone was engineered to express the complete ORF with an expression tag. Expression varies depending on the nature of the gene.

Components: The ORF clone is ion-exchange column purified and shipped in a 2D barcoded Matrix tube containing 10ug of transfection-ready, dried plasmid DNA (reconstitute with 100 ul of water).

Reconstitution Method:

1. Centrifuge at 5,000xg for 5min.
2. Carefully open the tube and add 100ul of sterile water to dissolve the DNA.
3. Close the tube and incubate for 10 minutes at room temperature.
4. Briefly vortex the tube and then do a quick spin (less than 5000xg) to concentrate the liquid at the bottom.
5. Store the suspended plasmid at -20°C. The DNA is stable for at least one year from date of shipping when stored at -20°C.

RefSeq: [NM_001164344.1](#), [NP_001157816.1](#)

RefSeq Size: 3743 bp

RefSeq ORF: 2007 bp

Locus ID: 26137

UniProt ID: [Q9HC78](#)

Cytogenetics: 3q13.31

Protein Families: Transcription Factors

Gene Summary: This gene, which was initially designated as dendritic cell-derived BTB/POZ zinc finger (DPZF), belongs to a family of transcription factors with an N-terminal BTB/POZ domain and a C-terminal DNA-binding zinc finger domain. The BTB/POZ domain is a hydrophobic region of approximately 120 aa which mediates association with other BTB/POZ domain-containing proteins. This gene acts as a transcriptional repressor and plays a role in many processes including neurogenesis, glucose homeostasis, and postnatal growth. Mutations in this gene have been associated with Primrose syndrome as well as the 3q13.31 microdeletion syndrome. Alternative splicing results in multiple transcript variants encoding distinct isoforms. [provided by RefSeq, Feb 2017]