

Product datasheet for **RG228986**

EWSR1 (NM_001163285) Human Tagged ORF Clone

Product data:

Product Type:	Expression Plasmids
Product Name:	EWSR1 (NM_001163285) Human Tagged ORF Clone
Tag:	TurboGFP
Symbol:	EWSR1
Synonyms:	bK984G1.4; EWS; EWS-FLI1
Mammalian Cell Selection:	Neomycin
Vector:	pCMV6-AC-GFP (PS100010)
E. coli Selection:	Ampicillin (100 ug/mL)



[View online »](#)

ORF Nucleotide
Sequence:

>RG228986 representing NM_001163285
Red=Cloning site Blue=ORF Green=Tags(s)

TTTTGTAATACGACTCACTATAGGGCGGCCGGGAATTCGTCGACTGGATCCGGTACCGAGGAGATCTGCC
GCCGCGATCGCC

ATGGCGTCCACGGATTACAGTACCTATAGCCAAGCTGCAGCGCAGCAGGGCTACAGTGCTTACACCGCCC
AGCCCACTCAAGGATATGCACAGACCACCCAGGCATATGGGCAACAAAGCTATGGAACCTATGGACAGCC
CACTGATGTCAGCTATACCCAGGCTCAGACCCTGCAACCTATGGGCAGACCCGCCTATGCAACTTCTTAT
GGACAGCCTCCCCTGTTATACTACTCCAAGTCCCGCCAGGCATACAGCCAGCCTGTCCAGGGGTATG
GCACTGGTGCTTATGATACCACCACTGCTACAGTACCACCACCCAGGCCTCCTATGCAGCTCAGTCTGC
ATATGGCACTCAGCCTGCTTATCCAGCCTATGGGCAGCAGCCAGCAGCCACTGCACCTACAAGACCCGAG
GATGGAACAAGCCCACTGAGACTAGTCAACCTCAATCTAGCACAGGGGGTTACAACCAACCCAGCCTAG
GATATGGACAGAGTAACACAGTTATCCCAGGTACCTGGGAGCTACCCATGCAGCCAGTCACTGCACC
TCCATCCTACCCTCCTACCAGCTATTCTCTACACAGCCGACTAGTTATGATCAGAGCAGTTACTCTCAG
CAGAACACCTATGGGCAACCCAGCAGCTATGGACAGCAGAGTAGCTATGGTCAACAAAGCAGCTATGGGC
AGCAGCCTCCCCTAGTTACCCACCCAAACTGGATCCTACAGCCAAGCTCCAAGTCAATATAGCCAACA
GAGCAGCAGCTACGGGCAGCAGAGTTTATTCCGACAGGACCACCCAGTAGCATGGGTGTTTATGGGCAG
GAGTCTGGAGGATTTCCGGACCAGGAGAGAACCCGAGCATGAGTGGCCCTGATAACCCGGGCAGGGGAA
GAGGGGGATTTGATCGTGGAGGCATGAGCAGAGGTGGCGGGGAGGAGGACGCGGTGGAATGGGCCTGG
AGAGCGAGGTGGCTTCAATAAGCCTGGTGGACCATGGATGAAGGACCAGATCTTGATCTAGGCCACCT
GTAGATCCAGATGAAGACTCTGACAACAGTGAATTTATGTACAAGGATTAATGACAGTGTGACTCTAG
ATGATCTGGCAGACTTCTTTAAGCAGTGTGGGGTTGTTAAGATGAACAAGAGAAGTGGGCAACCCATGAT
CCACATCTACCTGGACAAGGAAACAGGAAAGCCAAAGGCGATGCCACAGTGTCCCTATGAAGACCCACCC
ACTGCCAAGGCTGCCGTGGAATGGTTTGTGGGAAAGATTTTCAAGGGAGCAAACCTTAAAGTCTCCCTTG
CTCGGAAGAAGCCTCCAATGAACAGTATGCGGGGTGGTCTGCCACCCCGTGGGGCAGAGGCATGCCACC
ACCACTCCGTGGAGGTCCAGGAGGCCAGGAGTCTGGGGGACCCATGGGTGCGATGGGAGGCCGTGGA
GGAGATAGAGGAGGCTTCCCTCCAAGAGGACCCCGGGTTCGGAGGGAACCCCTCTGGAGGAGGAAACG
TCCAGCACCGAGCTGGAGACTGGCAGTGTCCCAATCCGGTGTGGAAACCAGAAGTTCGCTGGAGAAC
AGAGTGAACCAAGTGAAGGCCCAAGCCTGAAGGCTTCTCCCGCCACCTTTCCGCCCCGGGTGGT
GATCGTGGCAGAGGTGGCCCTGGTGGCATGCGGGGAGGAAGAGGTGGCCTCATGGATCGTGGTGGTCCC
GTGGAATGTTAGAGGTGGCCGTGGTGGAGACAGAGGTGGCTTCCGTGGTGGCCGGGCATGGACCGAGG
TGCTTTGGTGGAGGAAGACGAGGTGGCCCTGGGGGGCCCTGGACCTTTGATGGAACAGATGGGAGGA
AGAAGAGGAGGACGTGGAGGACCTGAAAAATGGATAAAGGCGAGCACCTCAGGAGCGCAGAGATCGGC
CCTAC

ACGCGTACGCGGCCGCTCGAG - GFP Tag - GTTTAA

Protein Sequence: >RG228986 representing NM_001163285
 Red=Cloning site Green=Tags(s)

MASTDYSTYSQAAAQQGYSAYTAQPTQGYAQTQAYGQQSYGTYGQPTDVSYTQAQTTATYGQTAYATSY
 GQPPTGYTTPTAPQAYSQPVQGYGTGAYDTTATVTTTQASYAAQSAYGTQPAYPAYGQQPAATAPTRPQ
 DGNKPTETSQPQSSTGGYNQPSLGYGQSNYSYPQVPGSYPMQPVTAAPPSPPTSYSTQPTSYDQSSYSQ
 QNTYGPSSYGGQSSYGGQSSYGGQPPPTSYPPTGYSYSQAPSQYSQQSSSYGQQSSFRQDHPSSMGVYGG
 ESGGFSGPGENRSMSPDNRGRGRGGFDRGGMSRGGRRGGMGAGERGGFNKPGGPMDEGPLDLGPP
 VDPDESDNSAIYVQGLNDSVTLDDLADFFKQCGVVKMNKRTGQPMIHIYLDKETGKPKGDATVSYEDPP
 TAKAAVEWFDGKDFQGSKLKVS LARKKPPMNSMRGGLPPREGRGMPPLRGGPGGPGGGPMGRMGGRG
 GDRGGFPFRGSRGNPSGGGNVQHRAGDWQCPNPGCGNQNF AWRTECNQCKAPKPEGFLPPPFPFPGG
 DRGRGGPGGMRGGRLMDRGGPGGMFRGGRRGGDRGGFRGGRRGMDRGGFGGRRGGPGGPPGLMEQMGG
 RRGRRGGPGKMDKGEHRQERRDRPY

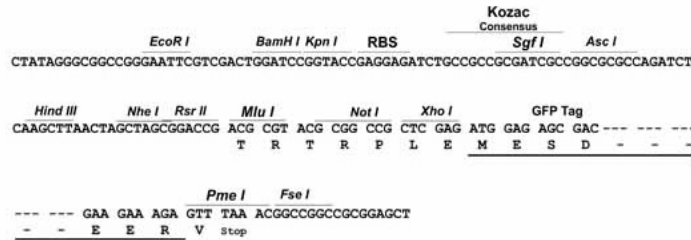
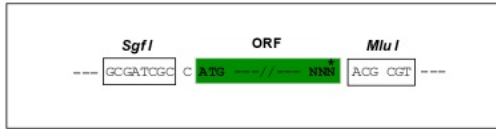
TRTRPLE - GFP Tag - V

Restriction Sites:

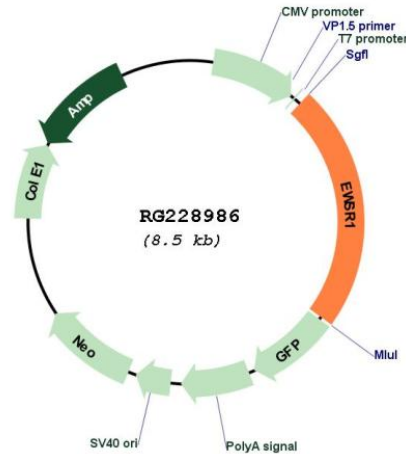
SgfI-MluI

Cloning Scheme:

Cloning sites used for ORF Shuttling:



Plasmid Map:



ACCN: NM_001163285

ORF Size: 1965 bp

OTI Disclaimer: The molecular sequence of this clone aligns with the gene accession number as a point of reference only. However, individual transcript sequences of the same gene can differ through naturally occurring variations (e.g. polymorphisms), each with its own valid existence. This clone is substantially in agreement with the reference, but a complete review of all prevailing variants is recommended prior to use. [More info](#)

OTI Annotation: This clone was engineered to express the complete ORF with an expression tag. Expression varies depending on the nature of the gene.

Components: The ORF clone is ion-exchange column purified and shipped in a 2D barcoded Matrix tube containing 10ug of transfection-ready, dried plasmid DNA (reconstitute with 100 ul of water).

Reconstitution Method:

1. Centrifuge at 5,000xg for 5min.
2. Carefully open the tube and add 100ul of sterile water to dissolve the DNA.
3. Close the tube and incubate for 10 minutes at room temperature.
4. Briefly vortex the tube and then do a quick spin (less than 5000xg) to concentrate the liquid at the bottom.
5. Store the suspended plasmid at -20°C. The DNA is stable for at least one year from date of shipping when stored at -20°C.

RefSeq: [NM_001163285.1](#), [NP_001156757.1](#)

RefSeq Size: 2676 bp

RefSeq ORF: 1968 bp

Locus ID: 2130

UniProt ID: [Q01844](#)

Cytogenetics: 22q12.2

Protein Families: Druggable Genome, Stem cell - Pluripotency, Transcription Factors

Gene Summary: This gene encodes a multifunctional protein that is involved in various cellular processes, including gene expression, cell signaling, and RNA processing and transport. The protein includes an N-terminal transcriptional activation domain and a C-terminal RNA-binding domain. Chromosomal translocations between this gene and various genes encoding transcription factors result in the production of chimeric proteins that are involved in tumorigenesis. These chimeric proteins usually consist of the N-terminal transcriptional activation domain of this protein fused to the C-terminal DNA-binding domain of the transcription factor protein. Mutations in this gene, specifically a t(11;22)(q24;q12) translocation, are known to cause Ewing sarcoma as well as neuroectodermal and various other tumors. Alternative splicing of this gene results in multiple transcript variants. Related pseudogenes have been identified on chromosomes 1 and 14. [provided by RefSeq, Jul 2009]