

Product datasheet for **RG228981**

ZNF611 (NM_001161501) Human Tagged ORF Clone

Product data:

Product Type:	Expression Plasmids
Product Name:	ZNF611 (NM_001161501) Human Tagged ORF Clone
Tag:	TurboGFP
Symbol:	ZNF611
Mammalian Cell Selection:	Neomycin
Vector:	pCMV6-AC-GFP (PS100010)
E. coli Selection:	Ampicillin (100 ug/mL)



[View online »](#)

ORF Nucleotide Sequence:

>RG228981 representing NM_001161501
 Red=Cloning site Blue=ORF Green=Tags(s)

TTTTGTAATACGACTCACTATAGGGCGGCCGGAATTCGTCGACTGGATCCGGTACCGAGGAGATCTGCC
 GCC**CGCATCGCC**

ATGATGAAGGAGTCTTGTCAACAGGGCAAGCAATACAGAAGTATCCACACAGGGACATTGCAAAGC
 ATGAAAGTCATCATTGGAGATTTTTCGTTCCAGGAAATTGAGAAAGAAATTCATGACATTGAGTTTCA
 GTGTCAAGAAGATGAAAGAAATGGCCTTGAAGCACCCATGACAAAAATAAAAAAGTTGACTGGTAGCACA
 GACCAACATGATCACAGGCATGCTGAAACAAGCCTATTAAGATCAGCTTGGATCAAGCTTTTATTAC
 ATCTGCCTGAACTCCACATATTTTCAGATCAAAGGTGAAATTTGGTAATCAACTTGAGAAGTCTACTAATGA
 TGCTCCCTCAGTTTCAACATTCAAAGAATTTCTGTAGGCCCAAAACCCAGATTTCTAATAACTATGGG
 AATAATCCCTGAATTTCTTACTCCACAAAAACAGGAAGTACACATGAGAGAAAAATCTTTCCAAT
 GTAATAAGAGTGGCAAAGCCTTTAATTGTAGTCACTCTTAAGGAAACACCAGATACCCCATTTAGGAGA
 CAAACAATATAAATGTGATGTATGTGGCAAGCTTTAATCAGGCAATACCTTGCATGCCATGATAGA
 TGTACACTGTTGAGAAACCTTACAAGTGTAAAGAGTGTGGCAAGACCTTCAGTCAGGAGTCATCCCTTA
 CCTGCCATCGTAGACTTCATACTGGAGTAAAACGTTACAATTGTAATGAGTGTGGCAAGATCTTTGGTCA
 AAATTCAGCCCTTCTAATTGATAAGGCAATTGATACTGGAGAAAAATCCTTACAAGTGAATGAATGTGAC
 AAGGCTTTTAAACAACATCACAATTTTACATCATAGAAATTCATACTGGAGAGAAACCTTACAATGTG
 AAGAATGTGACAAAGTTTTTCAGTCGAAATCAACCATTGAGACACATAAGAGAATTCATACTGGAGAGAA
 ACCATACAGATGTAAGGTTTGTGACACAGCTTTTACGTTGACATTCACAGCTGGCTCGACATAGAAGATT
 CACTACTGCAAAGAAAACCTTATAAATGTAATGAGTGTGGCAAGACCTTCAGTCACAAGTCACTCCCTTGTAT
 GCCATCATAGACTTCATGGTGGAGAGAAAATCTTACAATGTAAGTTTTGTGACAAGGCTTTTGTGGAG
 TTCACAACCTGGCAAACATACTAGAAATGACTGTGGAGAAAAACCTTACAAGTGAATGAATGTGGGAAG
 ACCTTTGGTCAAATTCAGATCTTTAATTGTAAGTCAATTCATACTGGGAGCAACCTTACAATGTG
 ATGAATGTGAAAAGTTTTTCAGTCGTAATCAAGCCTTGGAGACACATAAGATAGTTCATACTGGAGAGAA
 ACCATACAATGTAAGGTTTGTGACAAGGCTTTTGCCTGTATTCTATCTGGCAAACATACTAGAAAT
 CATAGTGGAGAGAAACCTTACAAGTGAATGAGTGCAGCAAGACCTTCAGTCACAGGTCATACCTTGTAT
 GCCATCATAGAGTTCATAGTGGTGAAGAACCTTACAAGTGAATGAGTGCAGCAAGACCTTCAGTCGCGAG
 GTCATCCCTTCATTGCCATCGTAGACTTCATAGTGGTGAAGAACCTTACAAGTGAATGAGTGTGGCAAT
 ACCTTCCGTCCTGCTCATCCCTTATATACCATCGTAGACTTCATACTGGAGAGAAATCTTACAATGTA
 CAATTTGTGACAAGGCTTTTCGTGCGTAATTCACCTCTGTCAAGACATACCAGAATTCACACTGCAGAGAA
 ACCTTACAAGTGAATGAATGTGGGAAGGCTTTAATCAACAATCACACCTTTCACGTCATCATAGAATT
 CATACTGGAGAGAAACCT

ACGCGTACGCGGCCGCTCGAG – GFP Tag – GTTTAA

Protein Sequence:

>RG228981 representing NM_001161501
 Red=Cloning site Green=Tags(s)

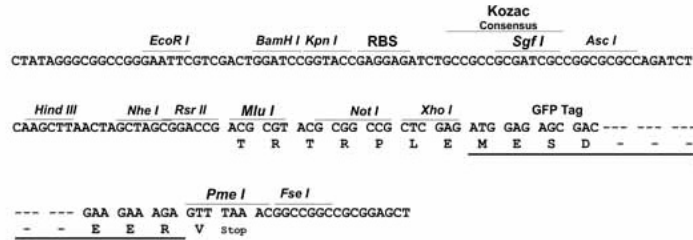
MMKEVLSTGQGNTEVIHTGTLQRHESHHIGDFCFQIEIEKIHDIEFQCQEDERNLEAPMTKIKKLTGST
 DQHDHRHAGNKPIKDQLGSSFYSHLPELHIFQIKGEIGNQLEKSTNDAPSVESTFQRISCRPQTQISNNY
 NNPLNSSLLPQKQEVHMREKSFQCNKSGKAFNCSSLLRKHQIPHLGDKQYKCDVCGKLFNHEQYLACHDR
 CHTVEKPYKCKEKGKTFSSQESSLTCHRRLHTGVKRYNCNECGKIFGQNSALLIDKAIDTGENPYKCNECD
 KAFNQSQLSHHRIHTGEKPYKCECDKVF SRKSTIETHKRIHTGEKPYRCKVCDTAFTWHSQARHRI
 HTAKKTYKNECGKTF SHKSSLVCHHRLHGGEKSYKCKVCDKAFVWSSQLAKHTRIDCGEKPYKNECGK
 TFGQNSDLLIHKSIHTGEQPYKDECEKVF SRKSSLETHKIGHTGEKPYKCKVCDKAFACHSYLAKHTRI
 HSGEKPYKNECSKTF SHRSYL VCHHRVHSGEKPYKNECSKTF SRRSSLHCHRRLHSGEKPYKNECGN
 TFRHCSLLIYHRLHTGEKSYKCTICDKAFVRNLLSRHTRIHTAEKPYKNECGKAFNQSQLSRHRI
 HTGEKP

TRTRPLE – GFP Tag – V

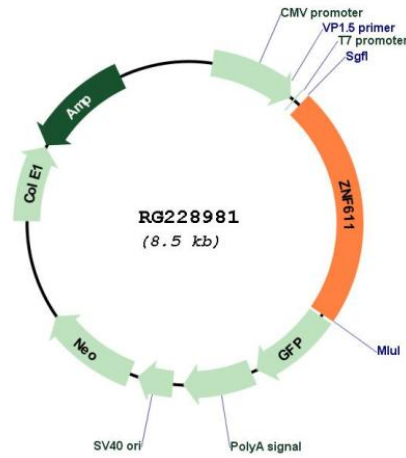
Restriction Sites: SgfI-MluI

Cloning Scheme:

Cloning sites used for ORF Shutting:



Plasmid Map:



ACCN: NM_001161501

ORF Size: 1908 bp

OTI Disclaimer:	The molecular sequence of this clone aligns with the gene accession number as a point of reference only. However, individual transcript sequences of the same gene can differ through naturally occurring variations (e.g. polymorphisms), each with its own valid existence. This clone is substantially in agreement with the reference, but a complete review of all prevailing variants is recommended prior to use. More info
OTI Annotation:	This clone was engineered to express the complete ORF with an expression tag. Expression varies depending on the nature of the gene.
Components:	The ORF clone is ion-exchange column purified and shipped in a 2D barcoded Matrix tube containing 10ug of transfection-ready, dried plasmid DNA (reconstitute with 100 ul of water).
Reconstitution Method:	<ol style="list-style-type: none">1. Centrifuge at 5,000xg for 5min.2. Carefully open the tube and add 100ul of sterile water to dissolve the DNA.3. Close the tube and incubate for 10 minutes at room temperature.4. Briefly vortex the tube and then do a quick spin (less than 5000xg) to concentrate the liquid at the bottom.5. Store the suspended plasmid at -20°C. The DNA is stable for at least one year from date of shipping when stored at -20°C.
RefSeq:	NM_001161501.1 , NP_001154973.1
RefSeq Size:	4380 bp
RefSeq ORF:	1911 bp
Locus ID:	81856
UniProt ID:	Q8N823
Cytogenetics:	19q13.41
Protein Families:	Transcription Factors
Gene Summary:	May be involved in transcriptional regulation.[UniProtKB/Swiss-Prot Function]