

Product datasheet for **RG228980**

RPAP3 (NM_001146075) Human Tagged ORF Clone

Product data:

Product Type:	Expression Plasmids
Product Name:	RPAP3 (NM_001146075) Human Tagged ORF Clone
Tag:	TurboGFP
Symbol:	RPAP3
Synonyms:	hSpagh; Tah1
Mammalian Cell Selection:	Neomycin
Vector:	pCMV6-AC-GFP (PS100010)
E. coli Selection:	Ampicillin (100 ug/mL)



[View online »](#)

ORF Nucleotide Sequence:

>RG228980 representing NM_001146075
 Red=Cloning site Blue=ORF Green=Tags(s)

TTTTGTAATACGACTCACTATAGGGCGGCCGGAATTCGTCGACTGGATCCGGTACCGAGGAGATCTGCC
 GCC**CGCATCGCC**

ATGACTTCAGCAAATAAGCAATCGAATTACAACACTACAAGTGAACAAAAATGCAGAAGAATTACAAGACT
 TTATGCGGGATTTAGAAAACCTGGGAAAAAGACATTAACAAAAGGATATGGAACAAAGAAGACAGAAATGG
 TGTTCTGAAGAGAATTTACCTCTATTCGAAATGGGAATTTTAGAAAAAGAAGAAAGGCAAAGCTAAA
 GAGTCTTCAAAAAAACAGAGAGGAAAACAAAAAACAGGATAAAATCTTATGATTATGAGGCATGGG
 CAAAACCTGATGTGGACCGTATCCTTGATGAGCTTGACAAAGACGATAGTACCCATGAGTCTCTGTCTCA
 AGAATCAGAGTCGGAAGAAGATGGGATTCATGTAGATTCACAAAAGGCTCTTGTTTTAAAAGAAAAGGGC
 AATAAACTTCAACAAGGAAAATATGATGAAGCAATTGACTGCTACACAAAAGGCATGGATGCCGATC
 CATATAATCCCGTGTGCCAACGAACAGAGCGTCAGCATATTTAGACTGAAAAATTTGCTGTTGCTGA
 GTCTGATTGTAATTTAGCAGTTGCCTTGAATAGAAGTTATACAAAGGCTTATTCCAGACGAGGTGCTGCT
 CGATTTGCTTTGCAAAAATTAGAAGAGGCCAAAAAGATTATGAAAGAGTATTAGAACTAGAACCAATA
 ACTTTGAAGCAACAAATGAACTCAGGAAAATCAGTCAGGCTTTAGCATCCAAAGAAAACCTCATATCCAAA
 GGAAGCTGACATAGTGATTAAGTCAACAGAAGGAGAGCGAAAAGCAAAATTGAAGCACAACAGAATAAGCAG
 CAGGCCATTTAGAGAAAAGATCGGGGGAATGGATTTTTCAAAGAGGGGAAATATGAAAGAGCAATTGAAT
 GCTATACTCGAGGGATAGCAGCAGATGGTGCTAATGCCCTTCTCCAGCTAACAGAGCTATGGCCTATCT
 GAAGATTCAGAAATATGAAGAAGCTGAAAAGACTGCACACAAGCCATTTTATTAGATGGCTCATATTCT
 AAAGCTTTTGCCAGAAGGGAACCTGCAAGAACATTTTGGGAAAGCTAAATGAGGCAAAAACAAGATTTTG
 AAAGCTTTTACTTCTGGAACCTGGAAAATAGCAAGCAGTAAGTGAAGTCTCCAAAATTTAAAAGAAAAC
 ACTCAAGAAGGTTATTATTGAAGAACTGGTAATTTGATACAGACTATTGATGTGCCAGATAGCACTACT
 GCTGCTGCTCCAGAGAATAATCCTATTAATCTAGCAAATGTAATAGCAGCCACAGGCACCAAGTAAAGA
 AGAATTCAGCAAGATGACCTTTTCCCAAGTGATACTCCAAGAGCAAAAAGTATTGAAAATAGAAGA
 AGTCAGTGATACTTATCCCTGCAACCTCAAGCCAGTTTGAAGCAGGATGTATGTCAGTCTTACAGCGAG
 AAAATGCCATAGAGATAGAACAAAACCTGCTCAGTTTGCCACAAGTCTTCTCCTCCAATTCTGCAA
 ACTCGTCCAGCTCGAATCTGATTTAGACAATTGAAAAGTTCTCCAGATATGTTGTATCAGTATTTAAA
 GCAAAATGAACCATCTTTGTATCCTAAGTTGTTTCAGAAAATCTGGATCCAGATGTATTCAACCAGATC
 GTTAAAATCTGCATGACTTTTACATTGAGAAAAGAAAAGCCATTACTCATCTTTGAAATCTTACAAAGAC
 TTTCTGAACTAAAAGGTTTATGATGGCAGTGATGTTTATGTCAGAAACAGAGAAAAGATTGCACGTGC
 ATTATTTAATCAGATAGACAAGTCAGGATTGAAGGATAGTTCTGTGCAAGAACTCAAGAAAAGATACGGT
 GGT

ACGCGTACGCGGCCGCTCGAG - GFP Tag - GTTTAA

Protein Sequence:

>RG228980 representing NM_001146075
 Red=Cloning site Green=Tags(s)

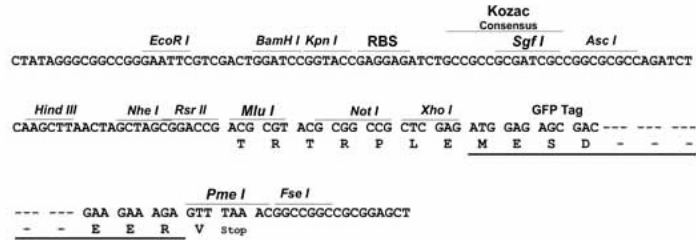
MTSANKAIELQLVQKQNAEELQDFMRDLNWEKDIKQKDMELRRQNGVPEENLPPIRNGNFRKKKKGKAK
 ESSKKTREENTKNRIKSYDYEAWAKLDVDRILDELDKDDSTHESLSQESESEEDGIHVDSQKALVLKEKG
 NKYFKQKGYDEAIDCYTKGMDADPNPVLPTNRASAYFRLKFFAVAESDCNLAVALNRSYTKAYSRRGAA
 RFALQKLEEAKKDYERVLELEPNFEATNELRKISQALASKENSYPKEADIVIKSTEGERKQIEAQNKQ
 QAISEKDRGNQGFKEGKYERIAIECYTRGIAADGANALLPANRAMAYLKIQKYEEAEKDCTQAILLDGSYS
 KAFARRGTARTFLGKLNKAEKQDFETVLLLEPGNKQAVTELSKIKKPLKVKVIEETGNLIQTIDVDPSTT
 AAAPENNPINLANVIAATGTTSKKNSSQDDLFPSTDPRAKVLKIEEVSSTSLQPQASLKQDVCQSYSE
 KMPIEIEQKPAQFATTVLPPIPANSFQLESDFRQLKSSPDMLYQYLKQIEPSLYPKLFQKLNLDPDVFNQI
 VKILHDFYIEKEKPLLIFFELQRLSELKRFDMVFMSETEKKIARALFNHIDKSGLKDSSVEELKKRYG
 G

TRTRPLE - GFP Tag - V

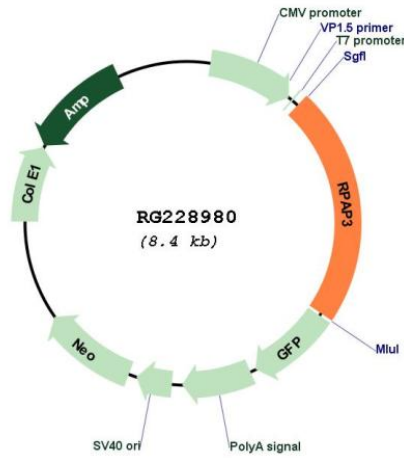
Restriction Sites: SgfI-MluI

Cloning Scheme:

Cloning sites used for ORF Shutting:



Plasmid Map:



ACCN: NM_001146075

ORF Size: 1893 bp

OTI Disclaimer:	The molecular sequence of this clone aligns with the gene accession number as a point of reference only. However, individual transcript sequences of the same gene can differ through naturally occurring variations (e.g. polymorphisms), each with its own valid existence. This clone is substantially in agreement with the reference, but a complete review of all prevailing variants is recommended prior to use. More info
OTI Annotation:	This clone was engineered to express the complete ORF with an expression tag. Expression varies depending on the nature of the gene.
Components:	The ORF clone is ion-exchange column purified and shipped in a 2D barcoded Matrix tube containing 10ug of transfection-ready, dried plasmid DNA (reconstitute with 100 ul of water).
Reconstitution Method:	<ol style="list-style-type: none">1. Centrifuge at 5,000xg for 5min.2. Carefully open the tube and add 100ul of sterile water to dissolve the DNA.3. Close the tube and incubate for 10 minutes at room temperature.4. Briefly vortex the tube and then do a quick spin (less than 5000xg) to concentrate the liquid at the bottom.5. Store the suspended plasmid at -20°C. The DNA is stable for at least one year from date of shipping when stored at -20°C.
RefSeq:	NM_001146075.1 , NP_001139547.1
RefSeq Size:	3585 bp
RefSeq ORF:	1896 bp
Locus ID:	79657
UniProt ID:	Q9H6T3
Cytogenetics:	12q13.11
Protein Families:	Protease
Gene Summary:	This gene encodes an RNA polymerase II-associated protein. The encoded protein may function in transcriptional regulation and may also regulate apoptosis. Alternatively spliced transcript variants have been described. [provided by RefSeq, Mar 2009]