

## Product datasheet for **RG228959**

### **TJAP1 (NM\_001146017) Human Tagged ORF Clone**

#### **Product data:**

Product Type:	Expression Plasmids
Product Name:	TJAP1 (NM_001146017) Human Tagged ORF Clone
Tag:	TurboGFP
Symbol:	TJAP1
Synonyms:	PILT; TJP4
Mammalian Cell Selection:	Neomycin
Vector:	pCMV6-AC-GFP (PS100010)
E. coli Selection:	Ampicillin (100 ug/mL)



[View online »](#)

**ORF Nucleotide Sequence:**

>RG228959 representing NM\_001146017  
 Red=Cloning site Blue=ORF Green=Tags(s)

TTTTGTAATACGACTCACTATAGGGCGGCCGGAATTCGTCGACTGGATCCGGTACCGAGGAGATCTGCC  
 GCC**CGCATCGCC**

ATGACTAGTGCCGCCCTGCTAAGAAACCTACCGTAAGGCACCACCAGAGCATCGGGAGCTGCGTTTGG  
 AAATTCCTGGATCCCGCTTGAGCAGGAGGAACCCCTGACTGATGCAGAAAGGATGAAGCTTTACAGGA  
 GGAGAATGAAGAGCTTCGCCGGCCTGGCCTCCGCCACCAGACGCACTGAGGCCCTGGAACGTGAGCTG  
 GAAATTGGGCAGGACTGCCTGGAGCTGGAGCTGGGCCAGAGCCGCGAGGAGCTGGACAAATTTAAGGATA  
 AGTTCGCGAGGCTGCAGAACAGCTACACGGCTTCCAGCGGACCAACCAGGAGTTGGAGGACAAGCTGCA  
 CACTGGCCTCTTAGCCACAGCTGGATTTTGAATCAAGAAGGCTGAGATGGATAGGAAGACGCTG  
 GACTGGGAGATTGTGGAGCTGACCAACAAGCTGCTGGATGCCAAGAACCACCAACAAGCTGGAAGAGC  
 TCAATGAGCGGTACCGGCTGGACTGCAACCTGGCTGTACAGCTCCTCAAGTGAACAAGTCCCACTCCG  
 AAACCACAAGTTGCCGATCTGCCCTGTGAGCTACAGGACATGGTTCGGAACATTTGCACAGTGGTCAA  
 GAGGCCGCCAGCCAGGTCTGCTCCAGCCTAGCCCCAGGGGCTGTGGTGCCTACCTCAGTCATTGCC  
 GAGTGTTAGAGAAGCCGAGTCTCTACTGCTCAACTCAGCCCAGTCAGGCAGCGCCGGGCCCCCTTGGC  
 TGAGGATGCTTTGTGCATGTGGACATGAGTGAGGGTGTCCCAGGTGATCCAGCCAGTCCCCGGCCCT  
 GGCAGCCCCACCCACAACCCAAATGGGGAGTGCCACTCTCTGGTACTGCCAGGGGCTCCCCGGAGGAAG  
 AGCTGCCCTGCCAGCCTTTGAGAAGCTGAACCCCTACCAACCCCGTCTCCACCACCCCACTGTATCC  
 TGGCCGCAAGGTAATAGATTCTCTGAGGATAAGGTTCCGATCCCCGCAACAGCCCCCTGCCAACTGC  
 ACTTACGCTACCCGCCAGGCCATTTCCCTGAGCCTGGTAGAGGAGGGAGTGAGCGGGCCCGCCAGCC  
 CAGTGCCCGACCCCTGCCTCAGCCAGGCCTCACCCACCAGCCAGCCAGCCCAACCCCTAACACT  
 CAGTGCCCGAGCTAGCTCTGCCAGCTCTGAAGAGGACCTGCTGGTCAGCTGGCAGCGGGCATTGTGGAC  
 CGTACTCCACCACCTGCTGCTGTGGCCAGCGCACAGCCTTTGGACGCGATGCCCTCCCTGAGCTGCAGC  
 GCCATTTTGCCATAGCCCCGCTGACAGAGATGAGGTGGTCCAGGCACCTTCTGCCCGACCCGAAGAGAG  
 TGAGCTTTTGTACCCACAGAACCTGACTCTGGCTTTCCAGGGAGGAAGAAGAGCTGAACCTGCCTATC  
 AGTCTGAGGAAGAGCGCCAGAGCCTGCTGCCATTAACAGGGGCACAGAGGAGGGGCCAGGCACTTCCC  
 ACACCGAGGGCAGGGCTGGCCACTCCCAGCTCCAGTCGCCCCAGCGCAGCCCAAGAGGATGGGGT  
 TCACCACCTGCACCGCAAGGACAGCCTGACCCAGGCCAGGAGCAGGGCAACCTGCTCAAC

**ACGCGTACGCGGCCGCTCGAG** - GFP Tag - GTTTAA

**Protein Sequence:**

>RG228959 representing NM\_001146017  
 Red=Cloning site Green=Tags(s)

MTSAAPAKKPYRKAPPEHRELRLLEIPGSRLEQEEPLTDAERMKLLQEENEELRRRLASATRRTEALEREL  
 EIQDCLLELELQGSREELDKFKDKFRRLQNSYASQRTNQELEDKHLHTLASLSHSWIFAIKKAEMDRKTL  
 DWEIVELTNKLLDAKNTINKLEELNERYRLDCNLAVQLLKCNKSHFRNHKFADLPCELQDMVRKHLHSGQ  
 EAASPGPAPSLAPGAVVPTSVIARVLEKPELLLLNSAQSGSAGRPLAEDVFVHVDMSEGVPGDPASPPAP  
 GSPTPQPNGECHSLGTARGSPPEELPLPAFEKLNYPYTPSPPHLYPGRRVIEFSEDKVRIPRNSPLPNC  
 TYATRQAISLSLVEEGSERARSPVPSTPASAQASPHHQSPAPLTL SAPASSASSEEDLLVSWQRAFVD  
 RTPPPAAVAQRTAFGRDALPELQRHFAHSPADRDEVVQAPSARPEESELLLPTEPDSGFPREEEELNLP  
 SPEERQSLLPINRGTEEGPGTSHTEGRAWPLPSSSRPQRSPKRMGVHHLHRKDSLTAQAEQGNLLN

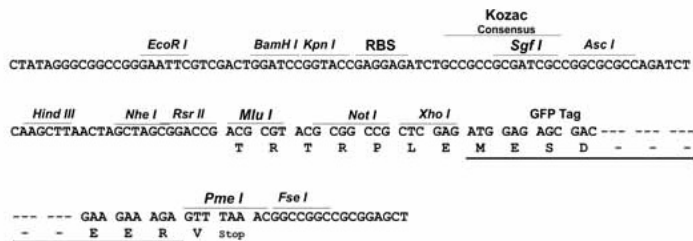
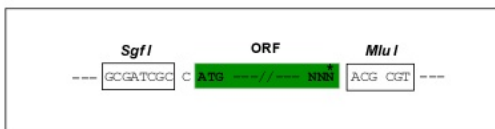
**TRTRPLE** - GFP Tag - V

**Restriction Sites:**

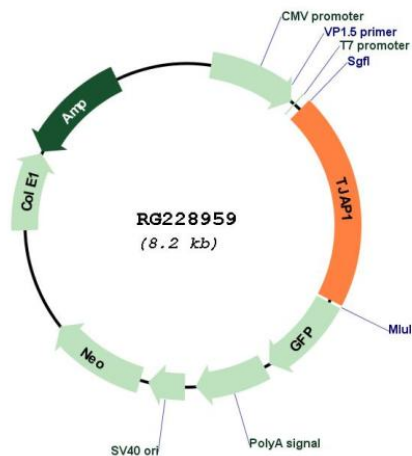
Sgfl-MluI

Cloning Scheme:

Cloning sites used for ORF Shuttling:



Plasmid Map:



<b>ACCN:</b>	NM_001146017
<b>ORF Size:</b>	1671 bp
<b>OTI Disclaimer:</b>	The molecular sequence of this clone aligns with the gene accession number as a point of reference only. However, individual transcript sequences of the same gene can differ through naturally occurring variations (e.g. polymorphisms), each with its own valid existence. This clone is substantially in agreement with the reference, but a complete review of all prevailing variants is recommended prior to use. <a href="#">More info</a>
<b>OTI Annotation:</b>	This clone was engineered to express the complete ORF with an expression tag. Expression varies depending on the nature of the gene.
<b>Components:</b>	The ORF clone is ion-exchange column purified and shipped in a 2D barcoded Matrix tube containing 10ug of transfection-ready, dried plasmid DNA (reconstitute with 100 ul of water).
<b>Reconstitution Method:</b>	<ol style="list-style-type: none"><li>1. Centrifuge at 5,000xg for 5min.</li><li>2. Carefully open the tube and add 100ul of sterile water to dissolve the DNA.</li><li>3. Close the tube and incubate for 10 minutes at room temperature.</li><li>4. Briefly vortex the tube and then do a quick spin (less than 5000xg) to concentrate the liquid at the bottom.</li><li>5. Store the suspended plasmid at -20°C. The DNA is stable for at least one year from date of shipping when stored at -20°C.</li></ol>
<b>RefSeq:</b>	<a href="#">NM_001146017.1</a> , <a href="#">NP_001139489.1</a>
<b>RefSeq Size:</b>	2726 bp
<b>RefSeq ORF:</b>	1674 bp
<b>Locus ID:</b>	93643
<b>UniProt ID:</b>	<a href="#">Q5JTD0</a>
<b>Cytogenetics:</b>	6p21.1
<b>Protein Pathways:</b>	Tight junction
<b>Gene Summary:</b>	This gene encodes a tight junction-associated protein. Incorporation of the encoded protein into tight junctions occurs at a late stage of formation of the junctions. The encoded protein localizes to the Golgi and may function in vesicle trafficking. Alternatively spliced transcript variants have been described. A related pseudogene exists on the X chromosome. [provided by RefSeq, Mar 2009]