

Product datasheet for **RG228920**

STAU2 (NM_001164385) Human Tagged ORF Clone

Product data:

Product Type:	Expression Plasmids
Product Name:	STAU2 (NM_001164385) Human Tagged ORF Clone
Tag:	TurboGFP
Symbol:	STAU2
Synonyms:	39K2; 39K3
Mammalian Cell Selection:	Neomycin
Vector:	pCMV6-AC-GFP (PS100010)
E. coli Selection:	Ampicillin (100 ug/mL)



[View online »](#)

ORF Nucleotide Sequence:

>RG228920 representing NM_001164385
 Red=Cloning site Blue=ORF Green=Tags(s)

TTTTGTAATACGACTCACTATAGGGCGGCCGGAATTCGTCGACTGGATCCGGTACCGAGGAGATCTGCC
 GCC**GCGATCGCC**

ATGCTTCAAATAAATCAGATGTTCTCAGTGCAGCTGAGTCTTGGTGAGCAGACATGGGAATCCGAAGGCA
 GCAGTATAAAGAAGGCTCAGCAGGCTGTTGCCAATAAAGCTTTGACTGAATCTACGTTCCCAAACCACT
 TCAGAAGCCACCCAAAAGTAATGTTAAACAATAACCCAGGCAGTATAACTCCAACCTGTGGAACCTGAATGGG
 CTTGCTATGAAAAGGGGAGAGCCTGCCATCTACAGGCCATTAGATCCAAAGCCATTCCCAAATTATAGAG
 CTAATTACAACCTTCGGGGCATGTACAATCAGAGGTATCATTGCCAGTGCCTAAGATCTTTTATGTTCA
 GCTCACTGTAGGAAATAATGAATTTTTGGGGAAGGAAAGACTCGACAAGCTGCTAGACACAATGCTGCA
 ATGAAAGCCCTCAAGCACTGCAGAATGAACCTATTCCAGAAAGATCTCCTCAGAATGGTGAATCAGGAA
 AGGATATGGATGATGACAAAGATGCAAAATAAGTCTGAGATCAGCTTAGTGTGTTGAAATTGCTCTGAAGCG
 AAATATGCCTGTCAGTTTTGAGGTTATTAAGAAAGTGGACCACCACATATGAAAAGCTTTGTTACTCGA
 GTGTCAGTAGGAGAGTTCTCTGCAGAAGGAGAAGGAAATAGCAAAAACTCTCCAAGAAGCGCGCTGCGA
 CCACCGTCTTACAGGAGCTTAAAAAATCCACCTCTTCTGTGGTGGAAGGCCAAAACTATTTTTTAA
 AAAACGCCCTAAAAAATAGTAAAGGCCGACCAGAATATGGCCAAGGGATGAACCTATTAGCCGCGCTG
 GCGCAAAATCAACAGGCCAAAAAGGAAAAGGAGCCGGATTATGTTTTGCTTTCAGAAAGAGGAATGCCTC
 GACGTCGAGAATTTGTGATGCAGGTGAAGGTAGGCAATGAAGTTGCTACAGGAACAGGACCTAATAAAAA
 GATAGCCAAAAAATGCTGCAGAAGCAATGCTGTTACAACCTGGTTATAAAGCATCCACTAATCTTCAG
 GATCAACTTGAGAAGACAGGGGAAAACAAGGATGGAGTGGTCCAAGCCTGGGTTTCTGAACCAACAA
 ATAATACTCCAAAAGGAATCTTCATTTGTCTCCTGATTTTATCAAGAGATGGAAGCCAGCCGCCACAA
 AGTAATCTCTGGCACTACTCTAGGCTATTTGTACCCCAAAGATATGAACCAACCTCAAGCTCTTTCTTC
 AGTATATCTCCACATCGAATAGTTCAGCTACAATTGCCAGGAACTCCTTATGAATGGAACATCTTCTA
 CAGCTGAAGCCATAGTTTTAAAAGGAAGTTCTCTACTCCCCTTGTCTCCAGTACAACCTTCAAAAACA
 ACTGGAATATTTAGCAAGGATTCAAGGCTTTCAGGTA

ACGCGTACGCGGCCGCTCGAG – GFP Tag – GTTTAA

Protein Sequence:

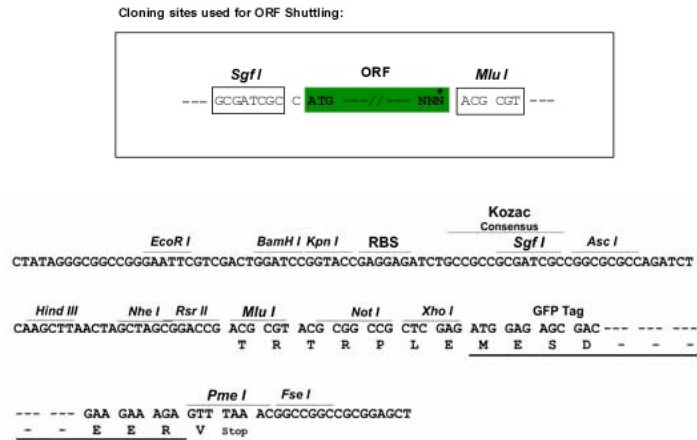
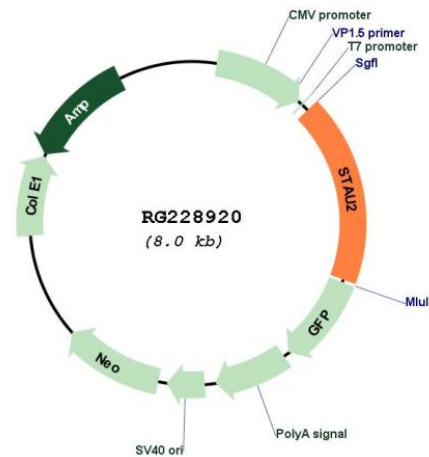
>RG228920 representing NM_001164385
 Red=Cloning site Green=Tags(s)

MLQINQMFSVQLSLGEQTWESESSIKKAQQAVANKALTESTLPKPVQKPPKSNVNNNPGSITPTVELNG
 LAMKRGEPAIYRPLDPKFPFNRYRANYNFRGMYNQRYHCPVPKIFYVQLTVGNNEFFGEGKTRQAARHNAA
 MKALQALQNEPIPERSPQNGESGKMDDDKDANKSEISLVFEIALKRNMPVSFEVIKESGPPHMKSFVTR
 VSVGEFSAEAGEGNSKLLSKKRAATTVLQELKLLPPLPVVEKPKLFFKKRPKTIIVKAGPEYQGMNPI SRL
 AQIQQAKKEKEDYVLLSERGMPPRRREFVMQVKVGNVATGTGPNKIIAKKNAAEAMLLQLGYKASTNLQ
 DQLEKTGENKGWSGPKPGFPEPTNNTPKGILHLSPDVYQEMEASRHKVISGTTLGYLSPKDMNQPSSSF
 SISPTSNSATIARELLMNGTSSTAEAIGLKGSSPTPPCSPVQPSKQLEYLARIQGFQV

TRTRPLE – GFP Tag – V

Restriction Sites:

Sgfl-Mlul

Cloning Scheme:

Plasmid Map:


ACCN: NM_001164385

ORF Size: 1419 bp

OTI Disclaimer: The molecular sequence of this clone aligns with the gene accession number as a point of reference only. However, individual transcript sequences of the same gene can differ through naturally occurring variations (e.g. polymorphisms), each with its own valid existence. This clone is substantially in agreement with the reference, but a complete review of all prevailing variants is recommended prior to use. [More info](#)

OTI Annotation: This clone was engineered to express the complete ORF with an expression tag. Expression varies depending on the nature of the gene.

Components: The ORF clone is ion-exchange column purified and shipped in a 2D barcoded Matrix tube containing 10ug of transfection-ready, dried plasmid DNA (reconstitute with 100 ul of water).

Reconstitution Method:

1. Centrifuge at 5,000xg for 5min.
2. Carefully open the tube and add 100ul of sterile water to dissolve the DNA.
3. Close the tube and incubate for 10 minutes at room temperature.
4. Briefly vortex the tube and then do a quick spin (less than 5000xg) to concentrate the liquid at the bottom.
5. Store the suspended plasmid at -20°C. The DNA is stable for at least one year from date of shipping when stored at -20°C.

RefSeq: [NM_001164385.1](#), [NP_001157857.1](#)

RefSeq Size: 3982 bp

RefSeq ORF: 1422 bp

Locus ID: 27067

UniProt ID: [Q9NUL3](#)

Cytogenetics: 8q21.11

Protein Families: Transcription Factors

Gene Summary: Staufen homolog 2 is a member of the family of double-stranded RNA (dsRNA)-binding proteins involved in the transport and/or localization of mRNAs to different subcellular compartments and/or organelles. These proteins are characterized by the presence of multiple dsRNA-binding domains which are required to bind RNAs having double-stranded secondary structures. Staufen homolog 2 shares 48.5% and 59.9% similarity with drosophila and human staufen, respectively. The exact function of Staufen homolog 2 is not known, but since it contains 3 copies of conserved dsRNA binding domain, it could be involved in double-stranded RNA binding events. Several transcript variants encoding different isoforms have been found for this gene. [provided by RefSeq, Aug 2009]