

## Product datasheet for **RG228916**

### Cannabinoid Receptor I (CNR1) (NM\_001160258) Human Tagged ORF Clone

#### Product data:

Product Type:	Expression Plasmids
Product Name:	Cannabinoid Receptor I (CNR1) (NM_001160258) Human Tagged ORF Clone
Tag:	TurboGFP
Symbol:	CNR1
Synonyms:	CANN6; CB-R; CB1; CB1A; CB1K5; CB1R; CNR
Mammalian Cell Selection:	Neomycin
Vector:	pCMV6-AC-GFP (PS100010)
E. coli Selection:	Ampicillin (100 ug/mL)



[View online »](#)

**ORF Nucleotide Sequence:**

>RG228916 representing NM\_001160258  
 Red=Cloning site Blue=ORF Green=Tags(s)

TTTTGTAATACGACTCACTATAGGGCGGCCGGAATTCGTCGACTGGATCCGGTACCGAGGAGATCTGCC  
 GCC**CGATCGCC**

ATGAAGTCGATCCTAGATGGCCTTGCAGATACCACCTTCCGCACCATCACCCTGACCTCCTGTACGTGG  
 GCTCAAATGACATTTCAGTACGAAGACATCAAAGGTGACATGGCATCCAAATTAGGGTACTTCCCACAGAA  
 ATTCCCTTTAACTTCTTTAGGGGAAGTCCCTTCCAAGAGAAGATGACTGCGGGAGACAACCCCCAGCTA  
 GTCCCAGCAGACCAGGTGAACATTACAGAAATTTACAACAAGTCTCTCTCGTCTTCAAGGAGAATGAGG  
 AGAACATCCAGTGTGGGGAAGTTCATGGACATAGAGTGTTCATGGTCTGAACCCAGCCAGCAGCT  
 GGCCATTGCAGTCTGTCCCTCACGCTGGGCACCTTACGGTCTGGAGAACCTCCTGGTGTGTGCGTC  
 ATCCTCCACTCCCGCAGCCTCCGCTGCAGGCCCTTCTACCACTTCATCGGCAGCCTGGCGGTGGCAGACC  
 TCCTGGGAGTGTCAATTTGTCTACAGCTTATTGACTTCCACGTGTTCCACCGCAAAGATAGCCGCAA  
 CGTGTCTCTGTTCAAACGGGTGGGTACGGCCTCTTCACTGCCTCCGTGGGAGCCTGTTTCTCACA  
 GCCATCGACAGGTACATATCCATTACAGGCCCTGGCCTATAAGAGGATTGTCACCAGGCCAAGGCCG  
 TGGTGGCGTTTTGCCTGATGTGGACCATAGCCATTGTGATCGCCGTGCTGCCTCTCTGGGCTGGAAGT  
 CGAGAACTGCAATCTGTTTGTCTCAGACATTTCCACACATTGATGAAACCTACCTGATGTTCTGGATC  
 GGGGTACCAGCGTACTGCTTCTGTTTATCGTGTATGCGTACATGTATATTCTCTGGAAGGCTCACAGCC  
 ACGCCGTCGCGATGATTCAGCGTGGCACCAGAAGAGCATCATATCCACACGTCTGAGGATGGGAAGGT  
 ACAGGTGACCCGGCCAGACCAAGCCCGCATGGACATTAGGTTAGCCAAGACCCTGGTCTGATCCTGGTG  
 GTGTTGATCATCTGCTGGGCCCCTGCTTGAATCATGGTGTATGATGTCTTTGGGAAGATGAACAAGC  
 TCATTAAGACGGTGTGTTGCAATTCGAGTATGCTGCCTGCTGAACCCAGCCATCATCTA  
 TGCTCTGAGGAGTAAGGACCTGCGACACGCTTTCGGAGCATGTTTCCCTCTTGTGAAGGCACTGCGCAG  
 CCTCTGGATAACAGCATGGGGACTCGGACTGCCTGCACAAACGCAAACAATGCAGCCAGTGTTCACA  
 GGGCCGAGAAAGCTGCATCAAGAGCACGGTCAAGATTGCCAAGTAACCATGTCTGTGTCCACAGACAC  
 GTCTGCCGAGGCTCTG

**ACGCGTACGCGGCCGCTCGAG** – GFP Tag – GTTTAA

**Protein Sequence:**

>RG228916 representing NM\_001160258  
 Red=Cloning site Green=Tags(s)

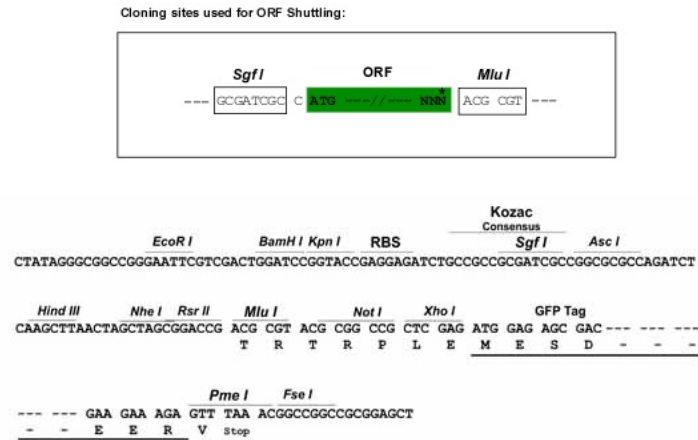
MKSILDGLADTTFRITITDLLVYGSNDIQYEDIKGMASKLGYFPQKFPPLTSFRGSPFQEKMTAGDNPQL  
 VPADQVNITEFYNKSLSSFKENEENIQCGENFMDIECFMVLNPSQQLAIAVLSLTLGTFVLENLLVLCV  
 ILHSRSLRCRPSYHFIGSLAVADLLGSVIFVYSFIDFHVFHRKDSRNVFLFKLGGVTASFASVGSFLF  
 AIDRYISIHRLAYKRIVTRPKAVVAFCLMWTIAIVIAVPLLLGWNCEKLSVCSDIFPHIDETYLFWI  
 GVTSVLLLFIVYAYMYILWKAHSHAVRMIQRGTQKSIIHTSEDGKVQVTRPDQARMDIRLAKTLVLILV  
 VLIICWGPLLAIMVYDVFVKMNLIKTVFAFCMLCLLNSTVNPPIYALRSKDLRHAFRSMFSPCEGTAQ  
 PLDNSMGDSDCLHKHANNAASVHRAAESCIKSTVKIAKVTMSVSTDTSAEAL

**TRTRPLE** – GFP Tag – V

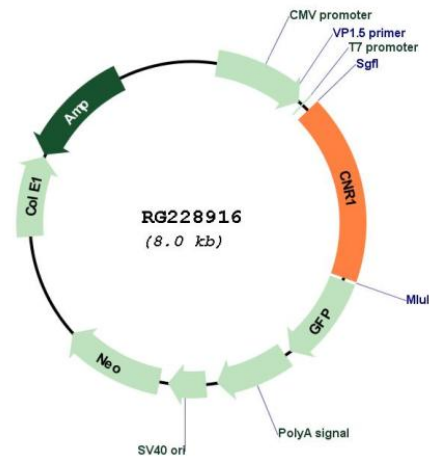
**Restriction Sites:**

Sgfl-MluI

## Cloning Scheme:



## Plasmid Map:



ACCN: NM\_001160258

ORF Size: 1416 bp

OTI Disclaimer: The molecular sequence of this clone aligns with the gene accession number as a point of reference only. However, individual transcript sequences of the same gene can differ through naturally occurring variations (e.g. polymorphisms), each with its own valid existence. This clone is substantially in agreement with the reference, but a complete review of all prevailing variants is recommended prior to use. [More info](#)

OTI Annotation: This clone was engineered to express the complete ORF with an expression tag. Expression varies depending on the nature of the gene.

Components: The ORF clone is ion-exchange column purified and shipped in a 2D barcoded Matrix tube containing 10ug of transfection-ready, dried plasmid DNA (reconstitute with 100 ul of water).

<b>Reconstitution Method:</b>	<ol style="list-style-type: none"><li>1. Centrifuge at 5,000xg for 5min.</li><li>2. Carefully open the tube and add 100ul of sterile water to dissolve the DNA.</li><li>3. Close the tube and incubate for 10 minutes at room temperature.</li><li>4. Briefly vortex the tube and then do a quick spin (less than 5000xg) to concentrate the liquid at the bottom.</li><li>5. Store the suspended plasmid at -20°C. The DNA is stable for at least one year from date of shipping when stored at -20°C.</li></ol>
<b>RefSeq:</b>	<a href="#">NM_001160258.3</a>
<b>RefSeq Size:</b>	5901 bp
<b>RefSeq ORF:</b>	1419 bp
<b>Locus ID:</b>	1268
<b>UniProt ID:</b>	<a href="#">P21554</a>
<b>Cytogenetics:</b>	6q15
<b>Protein Families:</b>	Druggable Genome, GPCR, Transmembrane
<b>Protein Pathways:</b>	Neuroactive ligand-receptor interaction
<b>Gene Summary:</b>	<p>This gene encodes one of two cannabinoid receptors. The cannabinoids, principally delta-9-tetrahydrocannabinol and synthetic analogs, are psychoactive ingredients of marijuana. The cannabinoid receptors are members of the guanine-nucleotide-binding protein (G-protein) coupled receptor family, which inhibit adenylate cyclase activity in a dose-dependent, stereoselective and pertussis toxin-sensitive manner. The two receptors have been found to be involved in the cannabinoid-induced CNS effects (including alterations in mood and cognition) experienced by users of marijuana. Multiple transcript variants encoding two different protein isoforms have been described for this gene. [provided by RefSeq, May 2009]</p>