

## Product datasheet for **RG228809**

### **NAT1 (NM\_001160171) Human Tagged ORF Clone**

#### Product data:

**Product Type:** Expression Plasmids  
**Product Name:** NAT1 (NM\_001160171) Human Tagged ORF Clone  
**Tag:** TurboGFP  
**Symbol:** NAT1  
**Synonyms:** AAC1; MNAT; NAT-1; NATI  
**Mammalian Cell Selection:** Neomycin  
**Vector:** pCMV6-AC-GFP (PS100010)  
**E. coli Selection:** Ampicillin (100 ug/mL)  
**ORF Nucleotide Sequence:** >RG228809 representing NM\_001160171  
Red=Cloning site Blue=ORF Green=Tags(s)

TTTTGTAATACGACTCACTATAGGGCGGCCGGAATTCGTCGACTGGATCCGGTACCGAGGAGATCTGCC  
 GCCCGGATCGCC

ATGGACATTGAAGCATATCTTGAAAGAATTGGCTATAAGAAGTCTAGGAACAAATTGGACTTGGAAACAT  
 TAACTGACATTCTCAACACCAGATCCGAGCTGTTCCCTTTGAGAACCTAACATCCATTGTGGGGATGC  
 CATGGACTTAGGCTTAGAGGCCATTTTTGATCAAGTTGTGAGAAGAAATCGGGTGGATGGTGTCTCCAG  
 GTCATCATCTTCTGACTGGCTCTGACCACTATTGGTTTTGAGACCACGATGTTGGGAGGGTATGTTT  
 ACAGCACTCCAGCCAAAAATACAGCACTGGCATGATTCACCTTCTCCTGCAGGTGACCATTGATGGCAG  
 GAACTACATTGTCGATGCTGGGTTTGGACGCTCATACCAGATGTGGCAGCCTCTGGAGTTAATTTCTGGG  
 AAGGATCAGCCTCAGGTGCCTTGTGCTTCCGTTTGACGGAAGAGAATGGATTCTGGTATCTAGACCAAA  
 TCAGAAGGGAACAGTACATTCCAATGAAGAATTTCTTATTCTGATCTCCTAGAAGACAGCAAATACCG  
 AAAATCTACTCTTTACTCTTAAGCCTCGAACAAATTGAAGATTTTGAGTCTATGAATACATACCTGCAG  
 ACATCTCCATCATCTGTGTTTACTAGTAAATCATTTTGTTCCTTGACAGCCCCAGATGGGGTTCACTGTT  
 TGGTGGGCTTACCCTCACCCATAGGAGATTCAATTATAAGGACAATACAGATCTAATAGAGTTCAAGAC  
 TCTGAGTGAGGAAGAAATAGAAAAAGTCTGAAAAATATATTTAATATTTCTTGCAGAGAAAGCTTGTG  
 CCCAAACATGGTGATAGATTTTTACTATT

ACGCGTACGCGGCCGCTCGAG - GFP Tag - GTTTAA



[View online »](#)

**Protein Sequence:** >RG228809 representing NM\_001160171  
Red=Cloning site Green=Tags(s)

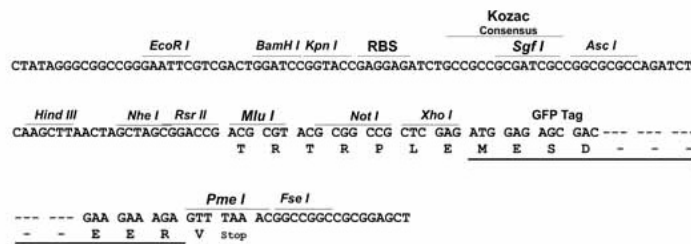
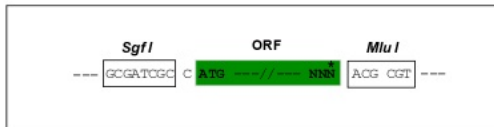
MDIEAYLERIGYKKS RNKLDLETLDILQHQIRAVPFENLNIHCGDAMD LGLEAIFDQVVRNRN RGGWCLQ  
 VNHLLYWALTTIGFETTMLGGYVYSTPAKKYSTGMIHLLQVTIDGRNYIVDAGFGRSYQMWOPLLEISG  
 KDQPQVPCVFRLEENGFWYLDQIRREQYIPNEEFLHSDLLED SKYRKIYSFTLKPRTIEDFESMNTYLQ  
 TSPSSVFTSKSFCSLQTPDGVHCLVGF TLTTHRRFNYKDNTDLIEFKTLSEEEIEKVLKNI FNISLQRKLV  
 PKHGDRFFTI

TRTRPLE - GFP Tag - V

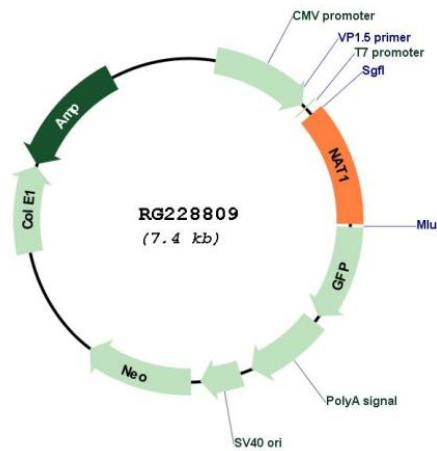
**Restriction Sites:** SgfI-MluI

**Cloning Scheme:**

Cloning sites used for ORF Shuttling:



**Plasmid Map:**



**ACCN:** NM\_001160171

**ORF Size:** 870 bp

<b>OTI Disclaimer:</b>	The molecular sequence of this clone aligns with the gene accession number as a point of reference only. However, individual transcript sequences of the same gene can differ through naturally occurring variations (e.g. polymorphisms), each with its own valid existence. This clone is substantially in agreement with the reference, but a complete review of all prevailing variants is recommended prior to use. <a href="#">More info</a>
<b>OTI Annotation:</b>	This clone was engineered to express the complete ORF with an expression tag. Expression varies depending on the nature of the gene.
<b>Components:</b>	The ORF clone is ion-exchange column purified and shipped in a 2D barcoded Matrix tube containing 10ug of transfection-ready, dried plasmid DNA (reconstitute with 100 ul of water).
<b>Reconstitution Method:</b>	<ol style="list-style-type: none"><li>1. Centrifuge at 5,000xg for 5min.</li><li>2. Carefully open the tube and add 100ul of sterile water to dissolve the DNA.</li><li>3. Close the tube and incubate for 10 minutes at room temperature.</li><li>4. Briefly vortex the tube and then do a quick spin (less than 5000xg) to concentrate the liquid at the bottom.</li><li>5. Store the suspended plasmid at -20°C. The DNA is stable for at least one year from date of shipping when stored at -20°C.</li></ol>
<b>RefSeq:</b>	<a href="#">NM_001160171.4</a>
<b>RefSeq Size:</b>	2199 bp
<b>RefSeq ORF:</b>	873 bp
<b>Locus ID:</b>	9
<b>UniProt ID:</b>	<a href="#">P18440</a>
<b>Cytogenetics:</b>	8p22
<b>Protein Pathways:</b>	Caffeine metabolism, Drug metabolism - other enzymes, Metabolic pathways
<b>Gene Summary:</b>	This gene is one of two arylamine N-acetyltransferase (NAT) genes in the human genome, and is orthologous to the mouse and rat Nat2 genes. The enzyme encoded by this gene catalyzes the transfer of an acetyl group from acetyl-CoA to various arylamine and hydrazine substrates. This enzyme helps metabolize drugs and other xenobiotics, and functions in folate catabolism. Multiple transcript variants encoding different isoforms have been found for this gene. [provided by RefSeq, Aug 2011]