

Product datasheet for **RG228801**

BIVM (NM_001159596) Human Tagged ORF Clone

Product data:

Product Type:	Expression Plasmids
Product Name:	BIVM (NM_001159596) Human Tagged ORF Clone
Tag:	TurboGFP
Symbol:	BIVM
Mammalian Cell Selection:	Neomycin
Vector:	pCMV6-AC-GFP (PS100010)
E. coli Selection:	Ampicillin (100 ug/mL)
ORF Nucleotide Sequence:	>RG228801 representing NM_001159596 Red=Cloning site Blue=ORF Green=Tags(s)

TTTTGTAATACGACTCACTATAGGGCGGCCGGAATTCGTCGACTGGATCCGGTACCGAGGAGATCTGCC
GCC**CGATCGCC**

ATGGGAGCTGAAACCTTCCACCTATTACCCAAGAAGAAGCTTTACATATTCTGGGCTTTCAACCTCCAT
TTGAAGATATTAGGTTTGGTCCTTTACGGGGAATACAACACTTATGAGGTGGTTTAGACAAATTAATGA
CCAATTCCATGTAAAAGGATGCTCTTATGTTCTATATAAGCCTCATGGGAAGAATAAAACAGCAGGAGAA
ACTGCTTCAGGGCCCTGTCAAAGTTAACCCTGGATTGAAAGATGAATCGCTGGCTTATATCTATCATT
GCCAAAATCATTATTTTTGTCCAATTGGCTTCGAAGCAACCCCTGTTAAAGCTAATAAAGCATTGAGCAG
GGGACCTCTCTACCACAGGAAGTTGAATATTGGATCTTAATTGGAGAATCAAGTAGAAAACATCCTGCC
ATTCACGTAAAAAATGGGCAGATATTGTTACTGATCTAAACACTCAAAATCCAGAATACCTGGATATCC
GGCACTTAGAGAGGGGACTGCAGTATAGAAAAACAAAGAAGCCAACATTTTTTTCTCTCAGGTTGGGGG
AAATTTGCATTGCATCATAGCATTCCAGAGACTTAACTGGCAAAGATTTGGCCTTTGGAACCTTCCATTT
GGAACCATTAGACAAGAATCACAACTCCAACACATGCCAGGGAATTGCCAAATCTGAGAGTGAAGACA
ATATTTCCAAGAAGCAGCATGGGCGTCTGGCCGGTCTTTCAGTGCTAGTTTCCATCAGGACTCGGCATG
GAAAAAGATGTCTAGTATCCATGAGAGAAGGAACAGTGGTTACCAGGGTTACAGTGATTACGATGGGAAT
GAT

ACGCGTACGCGGCCGCTCGAG - GFP Tag - GTTTAA



[View online »](#)

Protein Sequence: >RG228801 representing NM_001159596
Red=Cloning site Green=Tags(s)

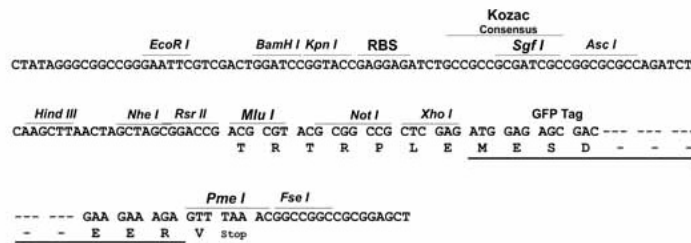
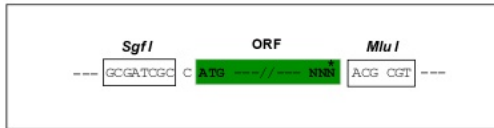
MGAGNLPITQEEALHILGFQPPFEDIRFGPFTGNTTLMRWRFRQINDHFHVKGCSYVLYKPHGKNKTAGE
 TASGALSKLTRGLKDESLAYIYHCQNHYFCPIGFEATPVKANKAFSRGPLSPQEVEYWILIGESSRKHPA
 IHCKKWADIVTDLNTQNPEYLDIRHLERGLQYRKTKKPTFFSSQVGGNLHCIIAFQRLNWQRFGLWNFPF
 GTIRQESQPPTHAQGIKSESDNISKQHGRLGRSFSASFHQDSAWKKMSSIHERRNSGYQGYSDYDGN
 D

TRTRPLE - GFP Tag - V

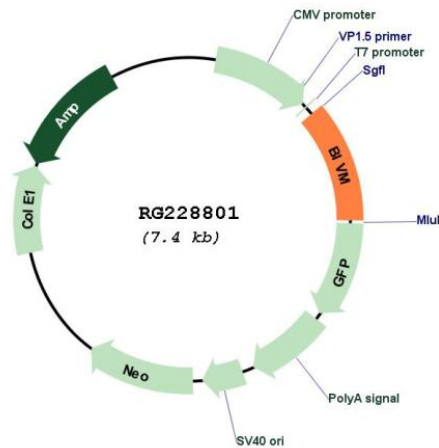
Restriction Sites: SgfI-MluI

Cloning Scheme:

Cloning sites used for ORF Shutting:



Plasmid Map:



ACCN: NM_001159596

ORF Size: 843 bp

OTI Disclaimer:	The molecular sequence of this clone aligns with the gene accession number as a point of reference only. However, individual transcript sequences of the same gene can differ through naturally occurring variations (e.g. polymorphisms), each with its own valid existence. This clone is substantially in agreement with the reference, but a complete review of all prevailing variants is recommended prior to use. More info
OTI Annotation:	This clone was engineered to express the complete ORF with an expression tag. Expression varies depending on the nature of the gene.
Components:	The ORF clone is ion-exchange column purified and shipped in a 2D barcoded Matrix tube containing 10ug of transfection-ready, dried plasmid DNA (reconstitute with 100 ul of water).
Reconstitution Method:	<ol style="list-style-type: none">1. Centrifuge at 5,000xg for 5min.2. Carefully open the tube and add 100ul of sterile water to dissolve the DNA.3. Close the tube and incubate for 10 minutes at room temperature.4. Briefly vortex the tube and then do a quick spin (less than 5000xg) to concentrate the liquid at the bottom.5. Store the suspended plasmid at -20°C. The DNA is stable for at least one year from date of shipping when stored at -20°C.
RefSeq:	NM_001159596.2
RefSeq Size:	3210 bp
RefSeq ORF:	846 bp
Locus ID:	54841
UniProt ID:	Q86UB2
Cytogenetics:	13q33.1