

Product datasheet for **RG228799**

FHL1 (NM_001159700) Human Tagged ORF Clone

Product data:

Product Type:	Expression Plasmids
Product Name:	FHL1 (NM_001159700) Human Tagged ORF Clone
Tag:	TurboGFP
Symbol:	FHL1
Synonyms:	FCMSU; FHL-1; FHL1A; FHL1B; FLH1A; KYOT; RBMX1A; RBMX1B; SLIM; SLIM-1; SLIM1; SLIMMER; XMPMA
Mammalian Cell Selection:	Neomycin
Vector:	pCMV6-AC-GFP (PS100010)
E. coli Selection:	Ampicillin (100 ug/mL)
ORF Nucleotide Sequence:	>RG228799 representing NM_001159700 Red=Cloning site Blue=ORF Green=Tags(s)

TTTTGTAATACGACTCACTATAGGGCGGCCGGAATTCGTCGACTGGATCCGGTACCGAGGAGATCTGCC
GCC**CGATCGCC**

ATGGCGGAGAAGTTTACTGCCACTACTGCAGGGATCCCTTGCAGGGGAAGAAGTATGTGCAAAAGGATG
GCCACCACTGCTGCCTGAAATGCTTTGACAAGTTCTGTGCCAACACCTGTGTGGAATGCCCAAGCCCAT
CGGTGCGGACTCCAAGGAGGTGCACTATAAGAACCCTTCTGGCATGACACCTGCTTCCGCTGTGCCAAG
TGCCTTACCCCTTGGCCAATGAGACCTTTGTGGCCAAGGACAACAAGATCCTGTGCAACAAGTGCACCA
CTCGGGAGGACTCCCCAAGTGAAGGGGTGCTTCAAGGCCATTGTGGCAGGAGATCAAAACGTGGAGTA
CAAGGGGACCGTCTGGCACAAGACTGCTTACCTGTAGTAAGTCAAGCAAGTCATCGGGACTGGAAGC
TTCTTCCCTAAAGGGGAGGACTTCTACTGCGTGACTTGCCATGAGACCAAGTTTGCCAAGCATTGCGTGA
AGTGCAACAAGGCCATCACATCTGGAGGAATCACTTACCAGGATCAGCCCTGGCATGCCGATTGCTTTGT
GTGTGTTACCTGCTCTAAGAAGCTGGCTGGCAGCGTTTACCGCTGTGGAGGACCAAGTATTACTGCGTG
GATTGCTACAAGAAGTTTGTGGCCAAGAAGTGTGCTGGATGCAAGAACCCCATCACTGGGTTTGGTAAAG
GCTCCAGTGTGGTGGCCTATGAAGGACAATCCTGGCAGGACTACTGCTTCCACTGCAAAAAATGCTCCGT
GAATCTGGCCAACAAGCGCTTTGTTTTCCACCAGGAGCAAGTGTATTGTCCCGACTGTGCCAAAAAGCTG

ACGCGTACGCGGCCGCTCGAG - GFP Tag - GTTTAA



[View online »](#)

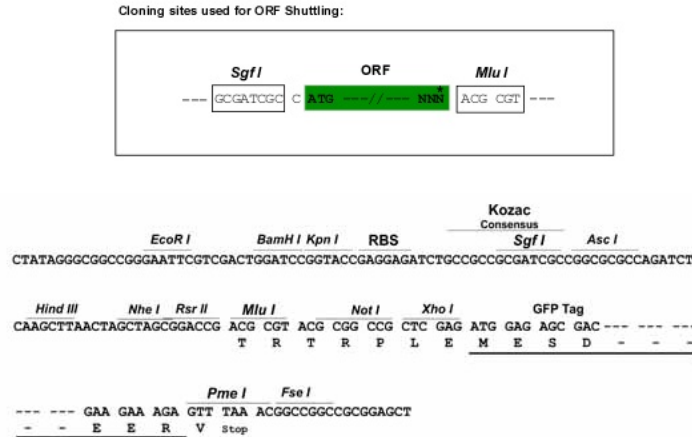
Protein Sequence: >RG228799 representing NM_001159700
 Red=Cloning site Green=Tags(s)

MAEKFDCHYCRDPLQGKKYVQKDGHHCLKCFDKFCANTCVECCKPIGADSKVEVHYKNRFWHDTCFRCAK
 CLHPLANETFVAKDNKILCNKCTTREDSPKCKGCFKAIVAGDQNVVEYKGTVWHKDCFTCSNCKQVIGTGS
 FFPKGEDFYCVTCHETKFAKHCVKCNKAITSGGITYQDQPHWADCFVCVTCSSKLAGQRFTAVEDQYYCV
 DCYKNFVAKKACGCKNPITGFGKGSVVAYEGQSWHDYCFHCKKCSVNLANKRFVHFHQEQVYPCDCAKKL

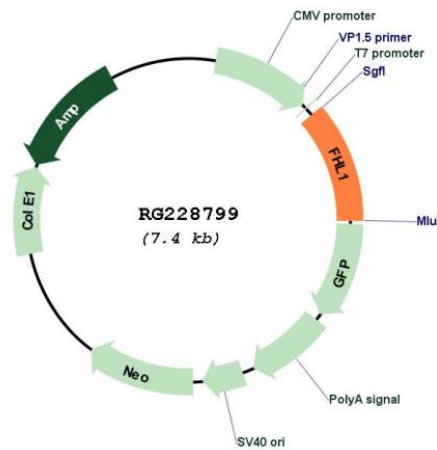
TRTRPLE - GFP Tag - V

Restriction Sites: SgfI-MluI

Cloning Scheme:



Plasmid Map:



ACCN: NM_001159700

ORF Size: 840 bp

OTI Disclaimer:	The molecular sequence of this clone aligns with the gene accession number as a point of reference only. However, individual transcript sequences of the same gene can differ through naturally occurring variations (e.g. polymorphisms), each with its own valid existence. This clone is substantially in agreement with the reference, but a complete review of all prevailing variants is recommended prior to use. More info
OTI Annotation:	This clone was engineered to express the complete ORF with an expression tag. Expression varies depending on the nature of the gene.
Components:	The ORF clone is ion-exchange column purified and shipped in a 2D barcoded Matrix tube containing 10ug of transfection-ready, dried plasmid DNA (reconstitute with 100 ul of water).
Reconstitution Method:	<ol style="list-style-type: none">1. Centrifuge at 5,000xg for 5min.2. Carefully open the tube and add 100ul of sterile water to dissolve the DNA.3. Close the tube and incubate for 10 minutes at room temperature.4. Briefly vortex the tube and then do a quick spin (less than 5000xg) to concentrate the liquid at the bottom.5. Store the suspended plasmid at -20°C. The DNA is stable for at least one year from date of shipping when stored at -20°C.
RefSeq:	NM_001159700.2
RefSeq Size:	2455 bp
RefSeq ORF:	843 bp
Locus ID:	2273
UniProt ID:	Q13642
Cytogenetics:	Xq26.3
Gene Summary:	This gene encodes a member of the four-and-a-half-LIM-only protein family. Family members contain two highly conserved, tandemly arranged, zinc finger domains with four highly conserved cysteines binding a zinc atom in each zinc finger. Expression of these family members occurs in a cell- and tissue-specific mode and these proteins are involved in many cellular processes. Mutations in this gene have been found in patients with Emery-Dreifuss muscular dystrophy. Multiple alternately spliced transcript variants which encode different protein isoforms have been described.[provided by RefSeq, Nov 2009]