

Product datasheet for **RG228794**

COPS7A (NM_001164094) Human Tagged ORF Clone

Product data:

Product Type:	Expression Plasmids
Product Name:	COPS7A (NM_001164094) Human Tagged ORF Clone
Tag:	TurboGFP
Symbol:	COPS7A
Synonyms:	CSN7; CSN7A; SGN7a
Mammalian Cell Selection:	Neomycin
Vector:	pCMV6-AC-GFP (PS100010)
E. coli Selection:	Ampicillin (100 ug/mL)
ORF Nucleotide Sequence:	>RG228794 representing NM_001164094 Red=Cloning site Blue=ORF Green=Tags(s)

TTTTGTAATACGACTCACTATAGGGCGGCCGGAATTCGTCGACTGGATCCGGTACCGAGGAGATCTGCC
GCC**CGATCGCC**

ATGAGTGC~~CGAAGTGAAGGTGACAGGGCAGAACCAGGAGCAATTTCTGCTCCTAGCCAAGTCGGCCAAGG~~
GGGCAGCGCTGGCCACACTCATCCATCAGGTGCTGGAGGCCCTGGTGTCTACGTGTTGGAGAAGTCT
GGACATGCCCAATGTTAGAGAGCTGGCTGAGAGTACTTGCCTCTACCTCCGGCTGCTCACAGTGT
GCTTATGGGACATACGCTGACTACTTAGCTGAAGCCCGGAATCTCCTCCACTAACAGAGGCTCAGAAGA
ATAAGCTTCGACACCTCTCAGTTGTCACCTGGCTGCTAAAGTAAAGTGTATCCCATATGCAGTGTGCT
GGAGGCTCTTGCCCTGCCTAATGTGCGGCAGCTGGAAAGCCTTGTGATTGAGGCTGTGTATGCTGACGTG
CTTCGTGGCTCCCTGGACCAGCGCAACCAGCGGCTCGAGGTTGACTACAGCATCGGGCGGGACATCCAGC
GCCAGGACCTCAGTGCCATTGCCGAACCCTGCAGGAATGGTGTGTGGGCTGTGAGGTCGTGCTGTCAGG
CATTGAGGAGCAGGTGAGCCGTGCCAACCAACAAGGAGCAGCAGCTGGGCCTGAAGCAGCAGATTGAG
AGTGAGGTTGCCAACCTTAAAAAACCTTAAAGTTACGACGGCAGCAGCAGCCGAGCCACATCTCAGG
ACCCTGAGCAACACCTGACTGAGCTGAGGGAACCAGCTCCTGGCACCAACCAGCGCCAGCCAGCAAGAA
AGCCTCAAAGGGCAAGGGGCTCCGAGGGAGCGCCAAGATTTGGTCCAAGTCAAT

ACGCGTACGCGGCCGCTCGAG - GFP Tag - GTTTAA



[View online »](#)

Protein Sequence: >RG228794 representing NM_001164094
 Red=Cloning site Green=Tags(s)

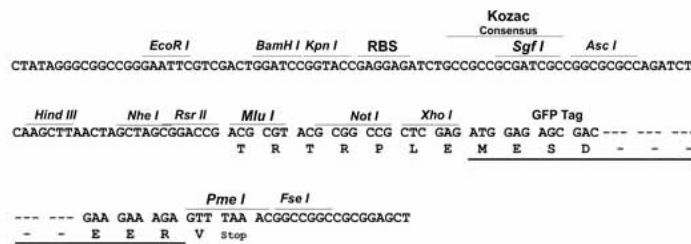
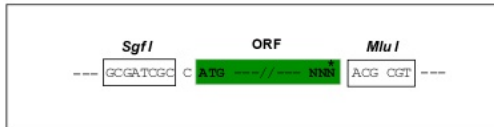
MSAEVKVTGQNQEQLLLAKSAKGAALATLIHQVLEAPGVYVFGELLDMPNVRELAESDFRLLTVF
 AYGTYADYLAARNLPLTEAQKNKLRHLSVVTLAAKVKCIPYAVLLEALALRNVRQLEDLVIEAVYADV
 LRGSLDQRNQRLEVDYSIGRDIQRQDL SAIARTLQEWCVGCEVVL SGIEEQVSRANQHKEQLGLKQQIE
 SEVANLKKTIKVT TAAAAAATSQDPEQHL TELREPAPGTNQRQPSKKASKGKGLRGS AKIWSKSN

TRTRPLE - GFP Tag - V

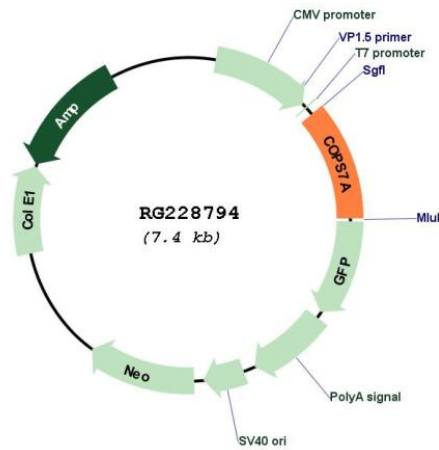
Restriction Sites: SgfI-MluI

Cloning Scheme:

Cloning sites used for ORF Shutting:



Plasmid Map:



ACCN: NM_001164094

ORF Size: 825 bp

OTI Disclaimer:	The molecular sequence of this clone aligns with the gene accession number as a point of reference only. However, individual transcript sequences of the same gene can differ through naturally occurring variations (e.g. polymorphisms), each with its own valid existence. This clone is substantially in agreement with the reference, but a complete review of all prevailing variants is recommended prior to use. More info
OTI Annotation:	This clone was engineered to express the complete ORF with an expression tag. Expression varies depending on the nature of the gene.
Components:	The ORF clone is ion-exchange column purified and shipped in a 2D barcoded Matrix tube containing 10ug of transfection-ready, dried plasmid DNA (reconstitute with 100 ul of water).
Reconstitution Method:	<ol style="list-style-type: none"> 1. Centrifuge at 5,000xg for 5min. 2. Carefully open the tube and add 100ul of sterile water to dissolve the DNA. 3. Close the tube and incubate for 10 minutes at room temperature. 4. Briefly vortex the tube and then do a quick spin (less than 5000xg) to concentrate the liquid at the bottom. 5. Store the suspended plasmid at -20°C. The DNA is stable for at least one year from date of shipping when stored at -20°C.
RefSeq:	NM_001164094.2
RefSeq Size:	1919 bp
RefSeq ORF:	828 bp
Locus ID:	50813
UniProt ID:	Q9UBW8
Cytogenetics:	12p13.31
Gene Summary:	This gene encodes a component of the COP9 signalosome, an evolutionarily conserved multi-subunit protease that regulates the activity of the ubiquitin conjugation pathway. Alternatively spliced transcript variants that encode the same protein have been described. [provided by RefSeq, Mar 2014]