

Product datasheet for **RG228783**

CDA11 (TATDN1) (NM_001146160) Human Tagged ORF Clone

Product data:

| | |
|---------------------------|--|
| Product Type: | Expression Plasmids |
| Product Name: | CDA11 (TATDN1) (NM_001146160) Human Tagged ORF Clone |
| Tag: | TurboGFP |
| Symbol: | TATDN1 |
| Synonyms: | CDA11 |
| Mammalian Cell Selection: | Neomycin |
| Vector: | pCMV6-AC-GFP (PS100010) |
| E. coli Selection: | Ampicillin (100 ug/mL) |
| ORF Nucleotide Sequence: | >RG228783 representing NM_001146160 Red=Cloning site Blue=ORF Green=Tags(s) |

TTTTGTAATACGACTCACTATAGGGCGGCCGGAATTCGTCGACTGGATCCGGTACCGAGGAGATCTGCC
GCC**CGATCGCC**

ATGAGTCGCTTCAAGTTTATCGATATTGGTATCAACTTGACTGACCCTATGTTTCAGAGGAATTTATAGGG
GGGTTCAAAGCATCAAGATGACTTACAGGATGTAATAGGGAGAGCTGTCGAGATTGGTGTAAAAAGTT
TATGATTACAGGTGAAATCTACAAGACAGTAAAGATGCACTGCATTTGGCACAACAAATGGTATGTTT
TTCAGTACAGTTGGATGTCATCCTACAAGATGTGGTGAATTTGAAAAGAATAACCCTGATCTTTACTTAA
AGGAGTTGCTAAATCTTGCTGAAAACAATAAAGGGAAAGTTGTGGCAATAGGAGAATGCGGACTTGATTT
TGACCGACTGCAGTTTTGTCCAAAGATACTCAACTCAAATATTTGAAAACAGTTGAACTGTCAGAA
CAAACAAATTACCAATGTTTCTCATTGTCGAAACTCACATGCTGAATTTTGGACATAACGAAAAGAA
ATAGAGATCGGTGTAGGGGGAGTGGTGCATTTGATGGTACCAAGGAAGCAGCAGCTGCTTTGAT
TGACTTGGATCTTTATATAGGATTTAATGGTTGCTCACTGAAAACCTGAAGCTAATTTGGAAGTTTGAAG
TCAATTCCTAGTAAAAATTAATGATTGAGACAGATGCACCTGGTGTGGAGTCAAAAGTACACATGCTG
GATCAAAATATAAGAAGTGCATTTCTACCAAAAAGAAGTGGGAAAGTGGGCACTGCTTAAAAGACAG
AAATGAACCTGCCATATAATTCAAATATTGGAGATAATGTCAGCAGTGAGAGATGAGGATCCACTGGAA
TTAGCCAATACTATATAACAATACTATTAAGTATTTTTTCTGGAATA

ACGCGTACGCGGCCGCTCGAG - GFP Tag - GTTTAA



[View online »](#)

Protein Sequence: >RG228783 representing NM_001146160
 Red=Cloning site Green=Tags(s)

MSRFKFKIDIGINLTDPMFRGIYRGVQKHQDDLQDVI GRAVEIGVKKFMITGGNLQDSKDALHLAQTNGMF
 FSTVVGCHPTRCGEFKNNPDLYLKELLNLAENNKGVVAIGECGLDFDRLQFCPKDQLKYFEKQFELSE
 QTKLPMFLHCRNSHAFLDITKRNDRVCVGGVVHSFDGTKEAAAALIDL DLYIGFNGCSLKTEANLEVLK
 SIPSEKLMIEDAPWCGVKSTHAGSKYIRTAFTP T KKKWESGHCLKDRNEPCHIIQILEIMSAVRDEDPLE
 LANTLYNNTIKVFFPGI

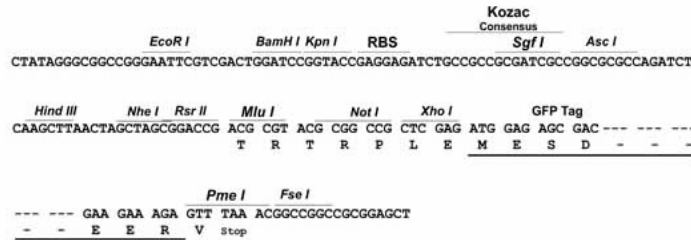
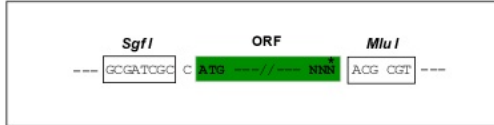
TRTRPLE - GFP Tag - V

Restriction Sites:

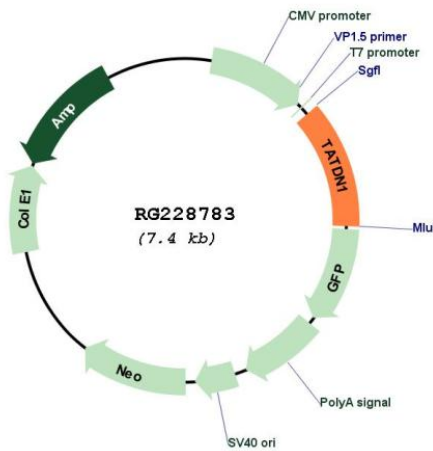
Sgfl-MluI

Cloning Scheme:

Cloning sites used for ORF Shuttling:



Plasmid Map:



ACCN: NM_001146160

ORF Size: 750 bp

| | |
|-------------------------------|---|
| OTI Disclaimer: | The molecular sequence of this clone aligns with the gene accession number as a point of reference only. However, individual transcript sequences of the same gene can differ through naturally occurring variations (e.g. polymorphisms), each with its own valid existence. This clone is substantially in agreement with the reference, but a complete review of all prevailing variants is recommended prior to use. More info |
| OTI Annotation: | This clone was engineered to express the complete ORF with an expression tag. Expression varies depending on the nature of the gene. |
| Components: | The ORF clone is ion-exchange column purified and shipped in a 2D barcoded Matrix tube containing 10ug of transfection-ready, dried plasmid DNA (reconstitute with 100 ul of water). |
| Reconstitution Method: | <ol style="list-style-type: none">1. Centrifuge at 5,000xg for 5min.2. Carefully open the tube and add 100ul of sterile water to dissolve the DNA.3. Close the tube and incubate for 10 minutes at room temperature.4. Briefly vortex the tube and then do a quick spin (less than 5000xg) to concentrate the liquid at the bottom.5. Store the suspended plasmid at -20°C. The DNA is stable for at least one year from date of shipping when stored at -20°C. |
| RefSeq: | NM_001146160.1 , NP_001139632.1 |
| RefSeq Size: | 930 bp |
| RefSeq ORF: | 753 bp |
| Locus ID: | 83940 |
| UniProt ID: | Q6P1N9 |
| Cytogenetics: | 8q24.13 |
| Gene Summary: | Putative deoxyribonuclease.[UniProtKB/Swiss-Prot Function] |