

Product datasheet for **RG228782**

SFTPA1 (NM_001164647) Human Tagged ORF Clone

Product data:

Product Type:	Expression Plasmids
Product Name:	SFTPA1 (NM_001164647) Human Tagged ORF Clone
Tag:	TurboGFP
Symbol:	SFTPA1
Synonyms:	COLEC4; PSAP; PSP-A; PSPA; SFTP1; SFTPA1B; SP-A; SP-A1; SP-A1 beta; SP-A1 delta; SP-A1 epsilon; SP-A1 gamma; SPA; SPA1
Mammalian Cell Selection:	Neomycin
Vector:	pCMV6-AC-GFP (PS100010)
E. coli Selection:	Ampicillin (100 ug/mL)
ORF Nucleotide Sequence:	>RG228782 representing NM_001164647 Red=Cloning site Blue=ORF Green=Tags(s)

TTTTGTAATACGACTCACTATAGGGCGGCCGGAATTCGTCGACTGGATCCGGTACCGAGGAGATCTGCC
GCC**CGATCGCC**

ATGTGGCTGTGCCCTCTGGCCCTCAACCTCATCTTGATGGCAGCCTCTGGTGCTGTGTGCCAAGTGAAGG
ACGTTTGTGTTGGAAGCCCTGGTATCCCCGGCACTCCTGGATCCCACGGCCTGCCAGGCAGGGACGGGAG
AGATGGTCTCAAAGGAGACCCTGGCCCTCCAGGCCCATGGGTCCACCTGGAGAAATGCCATGTCCTCCT
GGAAATGATGGGCTGCCTGGAGCCCTGGTATCCCTGGAGAGTGTGGAGAGAAGGGGGAGCCTGGCGAGA
GGGGCCCTCCAGGGCTTCCAGCTCATCTAGATGAGGAGCTCAAGCCACACTCCACGACTTAGACATCA
AATCCTGCAGACAAGGGGAGCCCTCAGTCTGCAGGGCTCCATAATGACAGTAGGAGAGAAGGTCTTCTCC
AGCAATGGGCAGTCCATCACTTTTATGCCATTCAGGAGGCATGTGCCAGAGCAGGCGGCCGATTGCTG
TCCAAGGAATCCAGAGGAAAATGAGGCCATTGCAAGCTTCGTGAAGAAGTACAACATATGCCTATGT
AGGCTGACTGAGGGTCCCAGCCCTGGAGACTCCGCTACTCAGACGGGACCCCTGTAACTACACCAAC
TGGTACCGAGGGGAGCCCGCAGGTGGGGAAAAGAGCAGTGTGTGGAGATGTACACAGATGGGCAGTGG
ATGACAGGAAGTGCCTGTACTCCGACTGACCATCTGTGAGTTC

ACGCGTACGCGGGCCGCTCGAG - GFP Tag - GTTTAA



[View online »](#)

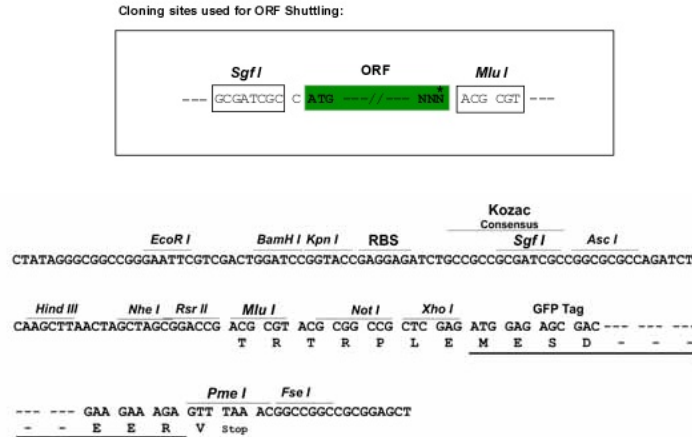
Protein Sequence: >RG228782 representing NM_001164647
 Red=Cloning site Green=Tags(s)

MWLCPALNLIILMAASGAVCEVKDVCVGSPIPGTSGHGLPGRDGRDGLKGDPPGPPMGPPEMPCPP
 GNDGLPGAPGIPGECGEKGEPPERGPPGLPAHLDEELQATLHDFRHQILQTRGALSLQGSIMTVGEKVFS
 SNGQSITFDAIQEACARAGGRIAVPRNPEENEAIASFVKKYNTYAYVGLTEGSPGDFRYS DGTVPVNYTN
 WYRGEPAGRGKEQC VEMYTDGQW NDRNCLYSRLTICEF

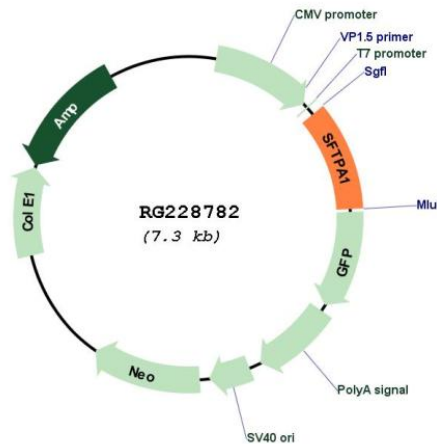
TRTRPLE - GFP Tag - V

Restriction Sites: SgfI-MluI

Cloning Scheme:



Plasmid Map:



ACCN: NM_001164647

ORF Size: 744 bp

OTI Disclaimer:	The molecular sequence of this clone aligns with the gene accession number as a point of reference only. However, individual transcript sequences of the same gene can differ through naturally occurring variations (e.g. polymorphisms), each with its own valid existence. This clone is substantially in agreement with the reference, but a complete review of all prevailing variants is recommended prior to use. More info
OTI Annotation:	This clone was engineered to express the complete ORF with an expression tag. Expression varies depending on the nature of the gene.
Components:	The ORF clone is ion-exchange column purified and shipped in a 2D barcoded Matrix tube containing 10ug of transfection-ready, dried plasmid DNA (reconstitute with 100 ul of water).
Reconstitution Method:	<ol style="list-style-type: none"> 1. Centrifuge at 5,000xg for 5min. 2. Carefully open the tube and add 100ul of sterile water to dissolve the DNA. 3. Close the tube and incubate for 10 minutes at room temperature. 4. Briefly vortex the tube and then do a quick spin (less than 5000xg) to concentrate the liquid at the bottom. 5. Store the suspended plasmid at -20°C. The DNA is stable for at least one year from date of shipping when stored at -20°C.
RefSeq:	NM_001164647.1 , NP_001158119.1
RefSeq Size:	2159 bp
RefSeq ORF:	747 bp
Locus ID:	653509
UniProt ID:	Q8IWL2
Cytogenetics:	10q22.3
Gene Summary:	This gene encodes a lung surfactant protein that is a member of a subfamily of C-type lectins called collectins. The encoded protein binds specific carbohydrate moieties found on lipids and on the surface of microorganisms. This protein plays an essential role in surfactant homeostasis and in the defense against respiratory pathogens. Mutations in this gene are associated with idiopathic pulmonary fibrosis. Alternate splicing results in multiple transcript variants. [provided by RefSeq, May 2010]