

Product datasheet for **RG228764**

SUMF2 (NM_001146333) Human Tagged ORF Clone

Product data:

Product Type:	Expression Plasmids
Product Name:	SUMF2 (NM_001146333) Human Tagged ORF Clone
Tag:	TurboGFP
Symbol:	SUMF2
Synonyms:	pFGE
Mammalian Cell Selection:	Neomycin
Vector:	pCMV6-AC-GFP (PS100010)
E. coli Selection:	Ampicillin (100 ug/mL)
ORF Nucleotide Sequence:	>RG228764 representing NM_001146333 Red=Cloning site Blue=ORF Green=Tags(s)

TTTTGTATACGACTCACTATAGGGCGGCCGGAATTCGTCGACTGGATCCGGTACCGAGGAGATCTGCC
 GCC**CGATCGC**C

ATGGCCCGGCATGGGTTACCGCTGCTGCCCTGCTGTGCTCCTGGTCGGCGCTGGCTCAAGCTAGGAA
 ATGGACAGGCTACTAGCATGGTCCAACGCAGGGTGGGAGATTCCTGATGGGAACAAATTCCTCAGACAG
 CAGAGATGGTGAAGGGCCTGTGCGGGAGGCGACAGTGAAACCCTTGCCATCGACATATTCCTGTCACC
 AACAAAGATTTTCAGGGATTTTGTGAGGGAGAAAAAGTATCGGACAGAAGCTGAGATGTTTGGATGGAGCT
 TTGTCTTTGAGGACTTTGTCTCTGATGAGCTGAGAAACAAAGCCACCCAGCCAATGAAGTCTGTACTCTG
 GTGGCTTCCAGTGAAAAAGGCATTTTGGAGGCAGCCTGCAGGTCCTGGCTCTGGCATCCGAGAGAGACTG
 GAGCACCCAGTGTTACACGTGAGCTGGAATGACGCCCGTGCCTACTGTGCTTGGCGGGGAAAAACGACTGC
 CCACGGAGGAAGAGTGGGAGTTTGCCGCCCGAGGGGGCTTGAAGGGTCAAGTTTACCCATGGGGGAACTG
 GTTCCAGCCAAACCGCACCAACCTGTGGCAGGGAAAGTCCCCAAGGGAGACAAAGCTGAGGATGGCTTC
 CATGGAGTCTCCCAAGTGAATGCTTTCCCGCCGAGAACAACTACGGGCTCTATGACCTCCTGGGGAACG
 TGTGGGAGTGGACAGCATACCGTACCAGGCTGCTGAGCAGGACATGCGCGTCTCCGGGGGGCATCCTG
 GATCGACACAGCTGATGGCTCTGCCAATCACGGGGCCGGGTACCACCAGGATGGGCAACACTCCAGAT
 TCAGCCTCAGACAACCTCGGTTTCCGCTGTGCTGCAGACGCAGGCCGGCCGCCAGGGGAGCTG

ACGCGTACGCGGCCGCTCGAG - GFP Tag - GTTTAA


[View online »](#)

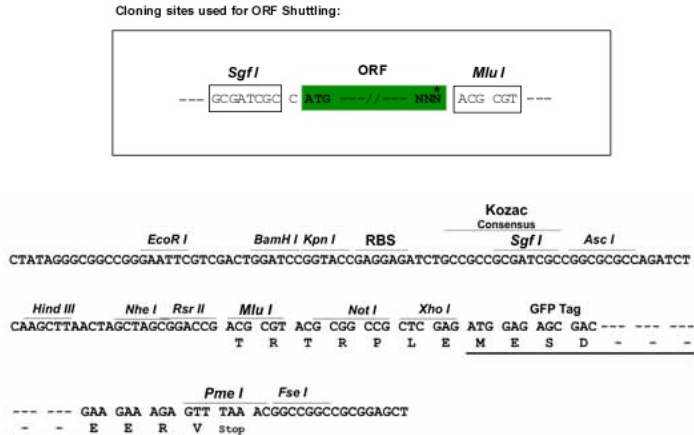
Protein Sequence: >RG228764 representing NM_001146333
 Red=Cloning site Green=Tags(s)

MARHGLPLLPLLSLLVGAWLKLNGQATSMVQLQGGRFLMGNTNSPDSRDGEGPVREATVKPFAIDIFPVT
 NKDFRDFVREKKYRTEAEMFGWSFVFEDFVSDLRNKATQPMKSVLWWLPVEKAFWRQPAGPGSGIRERL
 EHPVLHVSWNDARAYCAWRGKRLPTEEEWEFAARGGLKGQVYPWGNWFQPNRTNLWQGFPGDKAEDGF
 HGVSPVNAFPAQNNYGLYDLLGNVWEWTASPYQAAEQDMRVLRGASWIDTADGSANHRARVTRMGNTPD
 SASDNLGFRCAADAGRPPGEL

TRTRPLE – GFP Tag – V

Restriction Sites: SgfI-MluI

Cloning Scheme:



ACCN: NM_001146333

ORF Size: 906 bp

OTI Disclaimer: The molecular sequence of this clone aligns with the gene accession number as a point of reference only. However, individual transcript sequences of the same gene can differ through naturally occurring variations (e.g. polymorphisms), each with its own valid existence. This clone is substantially in agreement with the reference, but a complete review of all prevailing variants is recommended prior to use. [More info](#)

OTI Annotation: This clone was engineered to express the complete ORF with an expression tag. Expression varies depending on the nature of the gene.

Components: The ORF clone is ion-exchange column purified and shipped in a 2D barcoded Matrix tube containing 10ug of transfection-ready, dried plasmid DNA (reconstitute with 100 ul of water).

Reconstitution Method:

1. Centrifuge at 5,000xg for 5min.
2. Carefully open the tube and add 100ul of sterile water to dissolve the DNA.
3. Close the tube and incubate for 10 minutes at room temperature.
4. Briefly vortex the tube and then do a quick spin (less than 5000xg) to concentrate the liquid at the bottom.
5. Store the suspended plasmid at -20°C. The DNA is stable for at least one year from date of shipping when stored at -20°C.

RefSeq: [NM_001146333.1](#), [NP_001139805.1](#)

RefSeq Size: 1907 bp

RefSeq ORF: 642 bp

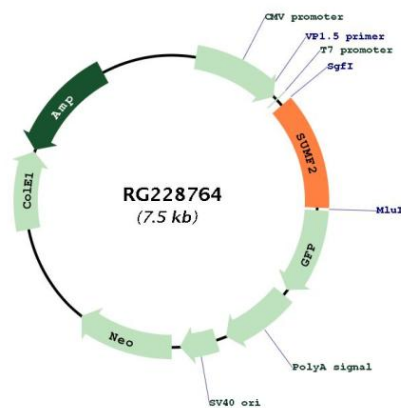
Locus ID: 25870

UniProt ID: [Q8NBJ7](#)

Cytogenetics: 7p11.2

Gene Summary: The catalytic sites of sulfatases are only active if they contain a unique amino acid, C-alpha-formylglycine (FGly). The FGly residue is posttranslationally generated from a cysteine by enzymes with FGly-generating activity. The gene described in this record is a member of the sulfatase-modifying factor family and encodes a protein with a DUF323 domain that localizes to the lumen of the endoplasmic reticulum. This protein has low levels of FGly-generating activity but can heterodimerize with another family member - a protein with high levels of FGly-generating activity. Alternate transcriptional splice variants, encoding different isoforms, have been characterized. [provided by RefSeq, Jul 2008]

Product images:



Circular map for RG228764