

Product datasheet for **RG228730**

SCOC (NM_001153446) Human Tagged ORF Clone

Product data:

Product Type: Expression Plasmids
Product Name: SCOC (NM_001153446) Human Tagged ORF Clone
Tag: TurboGFP
Symbol: SCOC
Synonyms: HRIHFB2072; SCOCO; UNC-69
Mammalian Cell Selection: Neomycin
Vector: pCMV6-AC-GFP (PS100010)
E. coli Selection: Ampicillin (100 ug/mL)
ORF Nucleotide Sequence: >RG228730 representing NM_001153446
Red=Cloning site Blue=ORF Green=Tags(s)

TTTTGTAATACGACTCACTATAGGGCGGCCGGAATTCGTCGACTGGATCCGGTACCGAGGAGATCTGCC
GCC**CGATCGCC**

ATGGACGGGTCCAGGAAAGAGGAGGAGGAAGACAGCACATTCACCAACATTTCTCTTGCAGATGACATAG
ACCATTCTCAAGAATTTGTATCCAAGGCCAAAAGTTGTTACCCAAGATGATGAATGCTGACATGGA
TGTTGATGCTGAAAATCAAGTGGAACTGGAGGAAAAACAAGACTTATTAATCAAGTGTGGAACCCAA
CACACACTGAAGATCTCTCTGCAAGAGTAGATGCAGTTAAGGAAGAAAATCTGAAGCTAAAATCAGAAA
ACCAAGTTCTTGGACAATATATAGAAAATCTCATGTCAGCTTCTAGTGTTTTTCAAACAACACTGACACAAA
AAGCAAAAGAAAG

ACGCGTACGCGGCCGCTCGAG - GFP Tag - GTTTAA

Protein Sequence: >RG228730 representing NM_001153446
Red=Cloning site Green=Tags(s)
MDGSRKEEEEDSTFTNISLADDIDHSSRILYPRPKSLLPKMMNADMVDVAENQVELEEKTRLINQVLELQ
HTLEDLSARVDAVKEENLKLKSENQVLGQYIENLMSASSVFQTTDTKSKRK

TRTRPLE - GFP Tag - V

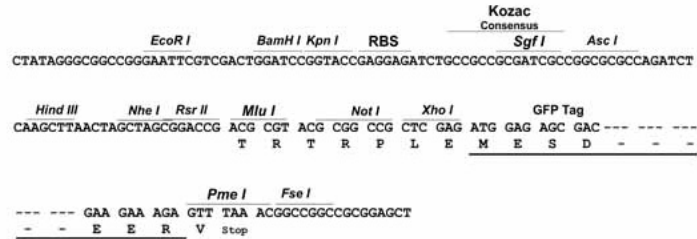
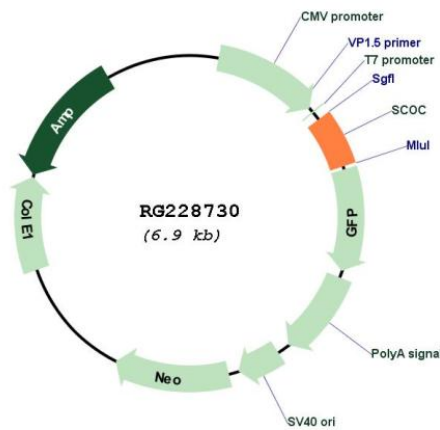
Restriction Sites: Sgfl-MluI



[View online »](#)

Cloning Scheme:

Cloning sites used for ORF Shutting:


Plasmid Map:

ACCN:

NM_001153446

ORF Size:

366 bp

OTI Disclaimer:

The molecular sequence of this clone aligns with the gene accession number as a point of reference only. However, individual transcript sequences of the same gene can differ through naturally occurring variations (e.g. polymorphisms), each with its own valid existence. This clone is substantially in agreement with the reference, but a complete review of all prevailing variants is recommended prior to use. [More info](#)

OTI Annotation:	This clone was engineered to express the complete ORF with an expression tag. Expression varies depending on the nature of the gene.
Components:	The ORF clone is ion-exchange column purified and shipped in a 2D barcoded Matrix tube containing 10ug of transfection-ready, dried plasmid DNA (reconstitute with 100 ul of water).
Reconstitution Method:	<ol style="list-style-type: none">1. Centrifuge at 5,000xg for 5min.2. Carefully open the tube and add 100ul of sterile water to dissolve the DNA.3. Close the tube and incubate for 10 minutes at room temperature.4. Briefly vortex the tube and then do a quick spin (less than 5000xg) to concentrate the liquid at the bottom.5. Store the suspended plasmid at -20°C. The DNA is stable for at least one year from date of shipping when stored at -20°C.
RefSeq:	<u>NM_001153446.1</u> , <u>NP_001146918.1</u>
RefSeq Size:	1876 bp
RefSeq ORF:	369 bp
Locus ID:	60592
UniProt ID:	<u>Q9UIL1</u>
Cytogenetics:	4q31.1
Gene Summary:	This gene encodes a short coiled-coiled domain-containing protein that localizes to the Golgi apparatus. The encoded protein interacts with ADP-ribosylation factor-like proteins. Pseudogenes of this gene are found on chromosomes 1 and 14. Alternative splicing results in multiple transcript variants. [provided by RefSeq, Apr 2009]