

Product datasheet for **RG228722**

FXYD6 (NM_001164831) Human Tagged ORF Clone

Product data:

Product Type: Expression Plasmids
Product Name: FXYD6 (NM_001164831) Human Tagged ORF Clone
Tag: TurboGFP
Symbol: FXYD6
Mammalian Cell Selection: Neomycin
Vector: pCMV6-AC-GFP (PS100010)
E. coli Selection: Ampicillin (100 ug/mL)
ORF Nucleotide Sequence: >RG228722 representing NM_001164831
Red=Cloning site Blue=ORF Green=Tags(s)

TTTTGTAATACGACTCACTATAGGGCGGCCGGAATTCGTCGACTGGATCCGGTACCGAGGAGATCTGCC
GCC**CGATCGCC**

ATGGAGTTGGTGCTGGTCTTCTCTGCAGCCTGCTGGCCCCATGGTCCTGGCCAGTGCAGCTGAAAAGG
AGAAGGAAATGGACCCTTTTCATTATGATTACCAGACCCTGAGGATTGGGGGACTGGTGTTCGCTGTGGT
CCTTCTCGGTTGGGATCCTCCTTATCCTAAGTCGCAGGTGCAAGTGCAGTTTCAATCAGAAGCCCCGG
GCCCCAGGAGATGAGGAAGCCCAGGTGGAGAACCCTCATCACCCCAATGCAACAGAGCCCCAGAAAGCAG
AGAAC

ACGCGTACGCGGCCGCTCGAG - GFP Tag - GTTTAA

Protein Sequence: >RG228722 representing NM_001164831
Red=Cloning site Green=Tags(s)

MELVLFVFLCSLLAPMVLASAAEKEKEMDPFHYDYQTLRIGGLVFAVVLFSVGILLILSRRCKCSFNQKPR
APGDEEAQVENLITANATEPQKAEN

TRTRPLE - GFP Tag - V

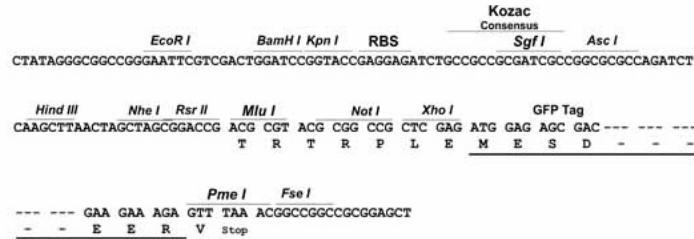
Restriction Sites: Sgfl-MluI



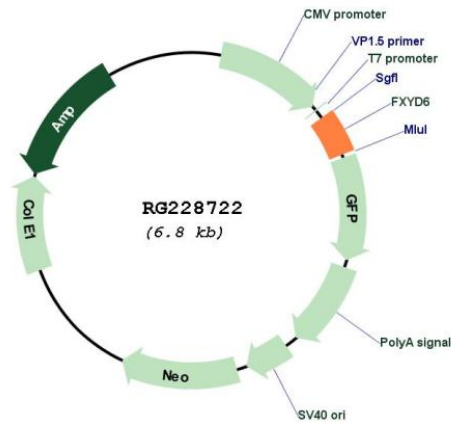
[View online »](#)

Cloning Scheme:

Cloning sites used for ORF Shutting:



Plasmid Map:



ACCN: NM_001164831

ORF Size: 285 bp

OTI Disclaimer:	The molecular sequence of this clone aligns with the gene accession number as a point of reference only. However, individual transcript sequences of the same gene can differ through naturally occurring variations (e.g. polymorphisms), each with its own valid existence. This clone is substantially in agreement with the reference, but a complete review of all prevailing variants is recommended prior to use. More info
OTI Annotation:	This clone was engineered to express the complete ORF with an expression tag. Expression varies depending on the nature of the gene.
Components:	The ORF clone is ion-exchange column purified and shipped in a 2D barcoded Matrix tube containing 10ug of transfection-ready, dried plasmid DNA (reconstitute with 100 ul of water).
Reconstitution Method:	<ol style="list-style-type: none">1. Centrifuge at 5,000xg for 5min.2. Carefully open the tube and add 100ul of sterile water to dissolve the DNA.3. Close the tube and incubate for 10 minutes at room temperature.4. Briefly vortex the tube and then do a quick spin (less than 5000xg) to concentrate the liquid at the bottom.5. Store the suspended plasmid at -20°C. The DNA is stable for at least one year from date of shipping when stored at -20°C.
RefSeq:	NM_001164831.3
RefSeq Size:	1749 bp
RefSeq ORF:	288 bp
Locus ID:	53826
UniProt ID:	Q9H0Q3
Cytogenetics:	11q23.3
Protein Families:	Ion Channels: Other, Transmembrane
Gene Summary:	This gene encodes a member of the FXYD family of transmembrane proteins. This particular protein encodes phosphohippolin, which likely affects the activity of Na,K-ATPase. Multiple alternatively spliced transcript variants encoding the same protein have been described. Related pseudogenes have been identified on chromosomes 10 and X. Read-through transcripts have been observed between this locus and the downstream sodium/potassium-transporting ATPase subunit gamma (FXVD2, GeneID 486) locus.[provided by RefSeq, Feb 2011]