

## Product datasheet for **RG228720**

### **FXYD6 (NM\_001164832) Human Tagged ORF Clone**

#### Product data:

Product Type: Expression Plasmids  
Product Name: FXYD6 (NM\_001164832) Human Tagged ORF Clone  
Tag: TurboGFP  
Symbol: FXYD6  
Mammalian Cell Selection: Neomycin  
Vector: pCMV6-AC-GFP (PS100010)  
E. coli Selection: Ampicillin (100 ug/mL)  
ORF Nucleotide Sequence: >RG228720 representing NM\_001164832  
Red=Cloning site Blue=ORF Green=Tags(s)

TTTTGTAATACGACTCACTATAGGGCGGCCGGAATTCGTCGACTGGATCCGGTACCGAGGAGATCTGCC  
GCC**CGATCGCC**

ATGGAGTTGGTGCTGGTCTTCTCTGCAGCCTGCTGGCCCCATGGTCCTGGCCAGTGCAGCTGAAAAGG  
AGAAGGAAATGGACCCTTTTCATTATGATTACCAGACCCTGAGGATTGGGGGACTGGTGTTCGCTGTGGT  
CCTTCTCGGTTGGGATCCTCCTTATCCTAAGTCGCAGGTGCAAGTGCAGTTTCAATCAGAAGCCCCGG  
GCCCCAGGAGATGAGGAAGCCCAGGTGGAGAACCCTCATCACCCCAATGCAACAGAGCCCCAGAAAGCAG  
AGAAC

**ACGCGT**ACGCGGCCGCTCGAG - GFP Tag - GTTTAA

Protein Sequence: >RG228720 representing NM\_001164832  
Red=Cloning site Green=Tags(s)  
MELVLFVFLCSLLAPMVLASAAEKEKEMDPFHVDYQTLRIGGLVFAVVLFSVGILLILSRRCKCSFNQKPR  
APGDEEAQVENLITANATEPQAEN

**TRTRPLE** - GFP Tag - V

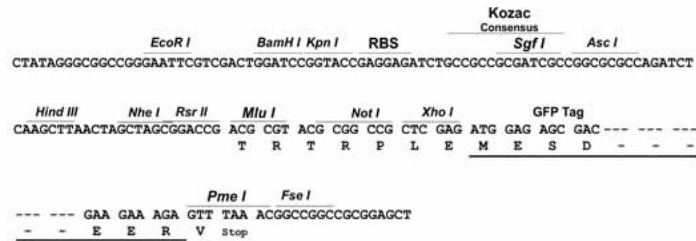
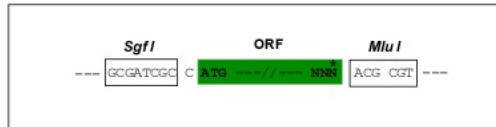
Restriction Sites: Sgfl-MluI



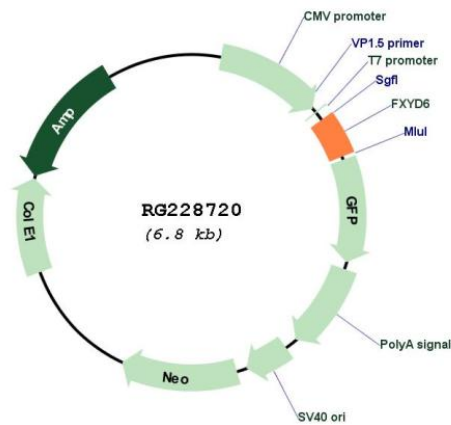
[View online »](#)

Cloning Scheme:

Cloning sites used for ORF Shutting:



Plasmid Map:



ACCN: NM\_001164832

ORF Size: 285 bp

<b>OTI Disclaimer:</b>	The molecular sequence of this clone aligns with the gene accession number as a point of reference only. However, individual transcript sequences of the same gene can differ through naturally occurring variations (e.g. polymorphisms), each with its own valid existence. This clone is substantially in agreement with the reference, but a complete review of all prevailing variants is recommended prior to use. <a href="#">More info</a>
<b>OTI Annotation:</b>	This clone was engineered to express the complete ORF with an expression tag. Expression varies depending on the nature of the gene.
<b>Components:</b>	The ORF clone is ion-exchange column purified and shipped in a 2D barcoded Matrix tube containing 10ug of transfection-ready, dried plasmid DNA (reconstitute with 100 ul of water).
<b>Reconstitution Method:</b>	<ol style="list-style-type: none"><li>1. Centrifuge at 5,000xg for 5min.</li><li>2. Carefully open the tube and add 100ul of sterile water to dissolve the DNA.</li><li>3. Close the tube and incubate for 10 minutes at room temperature.</li><li>4. Briefly vortex the tube and then do a quick spin (less than 5000xg) to concentrate the liquid at the bottom.</li><li>5. Store the suspended plasmid at -20°C. The DNA is stable for at least one year from date of shipping when stored at -20°C.</li></ol>
<b>RefSeq:</b>	<a href="#">NM_001164832.3</a>
<b>RefSeq Size:</b>	2154 bp
<b>RefSeq ORF:</b>	288 bp
<b>Locus ID:</b>	53826
<b>UniProt ID:</b>	<a href="#">Q9H0Q3</a>
<b>Cytogenetics:</b>	11q23.3
<b>Protein Families:</b>	Ion Channels: Other, Transmembrane
<b>Gene Summary:</b>	This gene encodes a member of the FXYD family of transmembrane proteins. This particular protein encodes phosphohippolin, which likely affects the activity of Na,K-ATPase. Multiple alternatively spliced transcript variants encoding the same protein have been described. Related pseudogenes have been identified on chromosomes 10 and X. Read-through transcripts have been observed between this locus and the downstream sodium/potassium-transporting ATPase subunit gamma (FXVD2, GeneID 486) locus.[provided by RefSeq, Feb 2011]