

Product datasheet for **RG228712**

MAST4 (NM_001164664) Human Tagged ORF Clone

Product data:

Product Type:	Expression Plasmids
Product Name:	MAST4 (NM_001164664) Human Tagged ORF Clone
Tag:	TurboGFP
Symbol:	MAST4
Mammalian Cell Selection:	Neomycin
Vector:	pCMV6-AC-GFP (PS100010)
E. coli Selection:	Ampicillin (100 ug/mL)
ORF Nucleotide Sequence:	>RG228712 representing NM_001164664 Red=Cloning site Blue=ORF Green=Tags(s)

TTTTGTAATACGACTCACTATAGGGCGGCCGGAATTCGTCGACTGGATCCGGTACCGAGGAGATCTGCC
GCC**CGATCGCC**

ATGGGGGAGAAAGTTTCGGAGGCCAGAGCCGGTGCCCCGGGCTGCAGTGGCCACGGCAGCCGGACTC
CAGCCTCTGCGCTGGTCGCCGCTCCTCTCCGGGTGCTTCTCGGCCGAGTCCTCCTCGGGCTCAGAAAC
TCTGTCCGAGGAAGGGGAGCCCGGGCTTCTCCAGAGAGCATCAGCCGCCGCCGCCGCCGCTGGGA
GGCACCCCTGGCGCCCGGGCGCCCGCCGCTGGGCTCCGGCAAGCGTGCTGCTGGAGCCGGAGTCTTG
CGTCCGCCGCCGCTTCCCGAGGAGCTGTGCCGCCGCCGCCGCCGCCGCCGCCGCCGCCGCCGCCGCC
GCAGGACGAGGAGCTTGACCACATATTATCCCCTCCACCCATGCCGTTTCGGAAATGCAGCAACCCAGAT
GTGGCTTCTGGCCCTGGAAATCACTGAAGTATAAAAGACAGCTGAGTGAGGATGGAAGACAGCTAAGGC
GAGGGAGCCTGGGAGGAGCCCTGACTGGGAGGTACCTTCTTCAAACCCGGTGGCGGGACAGGCCTGGCC
GGCCTCTGCAGAGACGTCCAACCTCGTGCCATGCGCAGCCAGGCCCTGGCCAGTCGGCGCCCTCGCTC
ACCGCCAGCCTGAAGGAGCTGAGTCTCCCCAGAAGAGGAAGTTTTTCCGAACAAGCAACCCGAAAAGCT
TAATAGGCAATGGGCAGTCACCAGCATTGCCTCGACCACACTCACCTCTCTGCTCATGCAGGAAATAG
CCCTCAAGATAGTCCAAGAAATTTCTCCCCAGTGCCTCAGCCATTTTTCATTTGCACGGAGGACTGAT
GGACGCCGCTGGTCGTTGGCTTCTCCTTCTCTGGCTATGGGACAAACACACCCAGCTCTACGGTCT
CTTCATCCTGTTCTCCAGGAGAAGTTGCATCAGTTACCATACCAACCAACACAGACGATTACACTT
CTTATCAAACATTTCTGTACCACCGAAAGCATCGCCACTGAGAACAGATGCAGGAACACGCCGATGCGC
CCCCGTTCCCGAAGTCTGAGCCCTGGACGTTTCTCCCGCCTGCTGTGACCATGAAATAATTATGATGAACC
ATGTCTACAAAGAAAGTTCCCAAAGGCTACAGCTCAGATGGAAGAACGTCTAAAGGAAATTATCACCAG
CTACTCTCCTGACAACGTTTACCTTAGCAGATGGAGTGCTTAGTTTCACTCACCACCAGATTATTGAA
CTGGCTCGAGATTGCTTGATAAATCCCACCAGGGCCTCATCACCTCACGATACTTCTTGAATTACAGC
ACAATTAGATAAGTTGCTACAGGAGGCTCATGATCGTTTCAGAAAGTGGAGAATTGGCATTATTAACA
ACTAGTTGAAAGATCCTAATTGTTATTGCCGCCCTGCTCGGTTATTAGAGTGCCTGGAATTTGATCCG
GAAGAATTTTACTACCTATTGGAAGCAGCAGAAGGCCATGCCAAAGAAGGACAGGATTAATAACCGACA
TTCCAGGTACATCATTAGCCAACCTGGGACTCAATAAGGATCCCTTGAAGAAATGGCTCATTGGGAAA



[View online »](#)

CTACGATAGTGGGACAGCAGAAAACACCAGAAAACAGATGAATCAGTGAGTAGCTCTAATGCCTCCCTGAAA
 CTTCAAGGAAACCTCGGGAAAGTGATTTTGAACGATTAATTTGATTAGCAATGGAGCCTATGGGGCAG
 TCTACTTTGTTCCGCATAAAGAAATCCCGGCAGAGGTTTGCATGAAGAAGATTAATAAACAGAACCTCAT
 CCTTCGAAACCAGATCCAGCAGGCCTTTGTGGAGCGGGATATCCTGACTTTTGCAGAAAACCCCTTTGTT
 GTCAGCATGTATTGCTCCTTTGAAACAAGGCGCCACTTGTGCATGGTATGGAATATGTGGAAGGGGGAG
 ACTGTGCTACTTTAATGAAAAACATGGTCTCTCCCTGTTGATATGGCCAGAATGACTTTGCTGAGAC
 GGTCTTGGCCTTGGAAATTTACATAATTATGGAATTGTACACAGGGATTGAAACCAGACAACCTGTTG
 GTTACCTCCATGGGGCACATAAAGCTGACAGATTTTGGATTATCTAAGGTGGGACTAATGAGCATGACTA
 CCAACCTTTACGAGGGTCATATTGAGAAGGATGCTAGAGAGTTTCTGGATAAACAGGTCTGTGGCACACC
 TGAATACATTGCACCAGAAGTATTCTGAGGCAGGGTTATGAAAAGCCGGTGGACTGGTGGGCCATGGGG
 ATTATCCTCTATGAATTTCTGGTTGGATGCGTGCCATTCTTTGGGGATACTCCAGAGGAGCTATTTGGAC
 AAGTCATCAGTGATGAGATCAACTGGCCTGAGAAGGATGAGGCACCCACCTGATGCCAGGATCTGAT
 TACCTTACTCCTCAGGCAGAATCCCTGGAGAGGCTGGGAACAGGTGGTGCATATGAAGTCAAACAGCAT
 CGATTCTTCCGTTCTTTAGACTGGAACAGTTTGTCTGAGACAGAAGGCAGAATTTATCCCAACTGGAAT
 CTGAGGATGACACAAGTTATTTTGATACTCGGTCTGAGAAGTATCATCATATGAAAACGGAGGAAGAAGA
 TGACACAAATGATGAAGACTTTAATGTGAAAATAGGCAGTTTTCTTCATGTTCCACAGGTTTTCAAAA
 GTTTTCAGCAGTATAGATCGAATCACTCAGAATTCAGCAGAAGAGAAGGAAGACTCTGTGGACAAAACCA
 AAAGCACCACTTGCATCCACAGAAAACACTGAGCTGGAGTTCAGAATATTCTGAAATGCAACAGCTATC
 AACATCCAACCTTTCAGATACTGAAAGCAACAGACATAAACTCAGTTCTGGCCTACTTCCCAAACTGGCT
 ATTTCAACAGAGGGAGAGCAAGATGAAGCTGCCTCCTGCCCTGGAGACCCCATGAGGAGCCAGGAAAGC
 CAGCCCTTCTCCTGAAGAGTGTGCCAGGAGGAGCCTGAGGTCACCACCCAGCCAGCACCATCAGCAG
 CTCCACCCTGTCAGTTGGCAGTTTTTTCAGAGCACTTGGATCAGATAAATGGACGAAGCGAGTGTGTGGAC
 AGTACAGATAAATCCTCAAAGCCATCCAGTGAACCCGCTTCTCACATGGCTCGGCAGCATTAGAAAGCA
 CAGAAAAAAGAAAAATCTCGGGGAAAGTCAAAAAGTCCCTCTCTGCCAGTGTCTTTCCCTCATGTTCC
 AGGAGATATGTTTGTGTTTCCCTCTGGGAAGTCCAATGTCTCCCATCCCTGTCTCGGACCCTTCT
 TCTTACGAGATTCTCTCCAGCCGAGATTCTCAGCAGCTTCTGCCAGTCCACATCAGCCGATTGTGA
 TCCACAGTTCCGGGAAGAAGTACGGCTTACCATCCGAGCCATCCGGGTGTATGTGGGAGACAGTGCAT
 CTATACAGTGCACCATATCGTCTGGAATGTAGAAGAAGGAAGTCCGGCATGCCAGGCAGGACTGAAGGCT
 GGAGATCTTACTCACATCAATGGAGAACCAGTGCATGGACTTGTCCACACAGAAGTTATAGAATCC
 TACTGAAGAGTGGGAATAAGGTGTCAATCACTACTACCCATTTGAAAACACATCAATCAAACTGGACC
 AGCCAGGAGAAACAGCTATAAGAGCCGGATGGTGAGGCGGAGCAAGAAATCCAAGAAGAAAGAAAGTCTC
 GAAAGGAGGAGATCTCTTTTCAAAAAGCTAGCCAAGCAGCCTTCTCTTTACTCCACACCAGCCGAAGT
 TCTCTGTGTTGAACAGATCCCTGTCTCGGGTGAAGCCTCCAGGTTCCCCCACTCATAGCTTGTCTCC
 CCGGTCTCCAACCAAGCTACCGCTCCACCCCTGACTTCCCATCTGGTACTAATTCCTCCAGAGCAGC
 TCCCTAGTTCTAGTGCCCCCAATTCACCAGCAGGGTCCGGGCACATCCGGCCAGCACTCTCCACGGTC
 TTGACCCAAACTCGGCGGGCAGCGGTACCGGTCCGGAAGGCGAAAGTCCGCGGCAACATCCCACTGTC
 CCCGCTGGCCCGGACGCCTCTCCAACCCCGCAACCCACTCCCGCAGCGGTACCATCCCTCTTCTG
 GGACACTCACTGGGCAATCCAAGATCGCGAAGCCTTTCCAGCAAGATGCACTCCCGCCACCATCG
 TCAGACACATCGTGAGGCCCAAGAGTGGGAGCCCCAGTCCCGCTGCTCAAGCGCTGCAGTCCGA
 GGAGAAGCTGTCGCCCTTACGGCAGTGACAAGAAGCACCTGTGCTCCGCAAGCACAGCTTGGAGGTG
 ACCCAAGAGGAGGTGCAGCGGGAGCAGTCCCAGCGGGAGCGCCGCTGCAGAGCCTGGATGAGAAGTGT
 GCGACGTGCCCGCTCAGCCGCGCCCGCCAGTGGAGCAAGGCTGCCTGAAACGCCAGTCTCCCGGAA
 GGTGGGCCGCCAGGAGTCTGTGGACGACCTGGACCGGACAAGCTGAAGGCCAAGGTGGTGGTGAAGAAA
 GCAGACGGCTTCCAGAGAAACAGGAATCCACCAGAAATCCCATGGACCCGGGAGTGATTTGGAAAAC
 TTGCTCTGTTAAGCTGGAAGAGAGAGAGAAGAAAGTCTATCCGAAGGCTGTGGAAGGTCAAGTACTTT
 TGAACAACAAAGCTCTATGCAGGAGGCGCACCCGCTGGGCAGCCTGCTGAAGGATGCTCTTACAAGCAG
 GCCAGCGTGCAGCCAGCAGGGTGCATGTCCGATGGCCGGTGCCTGCCGAGCACCGCCAGGGTGGCG
 GGGACTTCAGACGGGCCCCGCTCCTGGCACCCCTCCAGGATGGTCTCTGCCACTCCCTCGACAGGGGCAT
 CTCTGGGAAGGGGAAGGCACGGAGAAGTCTCCAGGCCAAGGAGCTTCTCCGATGTGAAAAGTTAGAC
 AGCAAGCTGGCCAACATCGATTACCTCCGAAAGAAAATGTCACTTGGAGCAAAGAGGACAACCTCTGCC
 CTGTGCTGAAGCCCAAGATGACAGCTGGCTCCACGAATGCCAGGGAAACCCAGTCCGACCCACGGG
 TGGGCAGCAGGAGCCCCCGCGCTTCTGAGAGCCGAGCTTTTGTGAGCAGCACCATGCAGCTCAGATG

```

AGTGCCGTCTCTTTTGTCCCTCAAGGCCTAACAGGCCGGTGGACAGTGAACGGAGAAGCCTGGCT
TGGTTGCTCCTGAGTCCCCTGTTAGGAAGAGCCCCTCCGAGTATAAGCTGGAAGGTAGGTCTGTCTCATG
CCTGAAGCCGATCGAGGGCACTCTGGACATTGCTCTCCTGTCCGGACCTCAGGCCCTCAAGACAGAACTG
CCTTCCCAGAGTCTGCACAGAGCCCCAGCCAAAGTGGTACGTGAGGGCCTCTGTGCCACCAGTTCTCC
CCAGCAGCAGTGGGAAAAAGAACGATACCACCAGTGAAGAGAGCTTTCTCCTCCAGCTTAAAGATGAA
TAAATCCTACCTGCTGGAGCCTTGGTTCTGCCCCAGCCGAGGTCTCCAGAATCACCAGCAGTTTCC
CTGCCTGACCCAGAGTTCAAGAGGGACAGGAAAGTCCCCTACTGCCAGGAGCCCTGGAACAGTCA
TGGAAAGCAATCCCAACAGAGAGAGGGCAGTCCCCTAAACACCAAGACCACCACTGACCCCAAGCT
TGTGACCTGCCTGGGGCAGAACCTCCACAGCCCTGACCTGGCCAGGCCACGCTGCCCGCTCCACCTGAA
GCTTCCCCTCAAGGGAGAAGCCAGGCCTGAGGGAATCGTCTGAAAGAGGCCCTCCACAGCCAGAAGCG
AGCGCTCTGCTGCGAGGGCTGACACATGCAGAGAGCCCTCCATGGAAGTGTGCTTCCAGAACTGCGAA
AACAGTGACAACCTCAAAAATCTCCTCTCTGTGGGAAGGACCCACCCAGATTTCTATACACAGACCCAG
GCCATGGAGAAAGCATGGGCGCCGGTGGGAAACGAACCACAAAGATGGCCAGGTGAGGCGAGGCCCC
CGCCAGAGACAACCTCTCTGCACTCAGCTGGAATTCCTGTGAGAAGGAGCTGGGAAGGTGAGGCG
TGGCGTGAACCAAGCCGAAGCGCTTGTGCCAGGCGGTCTCTGCAGCCACCTGGAATTGAGAGTGAG
AAGAGTAAAAGCTCTCCAGTTTCCCATCTTGCAGAAAGATGGTGCCAAGGAACCTGAAAGGAAGGAGC
AGCCTCTACAAAGGCATCCCAGCAGCATCCCTCCGCCCTCTGACGGCCAAAGACCTGTCCAGCCCGGC
TGCCAGGCAGCATTGCAAGTTCCTCAAGCCACGCTTCTGGCAGAGAGCCGGGGCCAAAGCCAGCACTGCA
GAGCCAGCTCGAGCCCCAGGACCCCTCCCAAGCCTGTTGCTGCGCACAGTGAAGCAGCAGCCACAAGC
CCCGCCTGGCCCTGACCCGGGCCCTCCAAAGACTAAGCACCCCGACCCGTCCTCTCCTCTCAGAAACC
AAGTGTGGGGCCACAAGGGCAAGAGCCTGCCACTCAGTCCCTCGGTGGCTCTAGCAGAGAGGGGAAG
GGCCACAGTAAGAGTGGGCGGATGTGTTCTGCTACCCAGGCTCCCAGAACAAGCCAGCGATGGGA
TTGGCCAGGGAGAAGGTGGCCCTCTGTCCCCTGCACACTGACAGGGCTCCTCTAGACGCCAAGCCACA
ACCCACCAGTGGTGGGCGGCCCTGGAGTGCTGGAGAAGCCTGTGCATTTGCCAAGGCCGGGACACCCA
GGGCTAGTGAGCCAGCGGACCAGAAAGTGTCCGCTGTTGGTAAAAGCAAACCTGTCTCCAAAGCACC
CCAAACCATCCACTGTGAAAGATTGCCCCACCCTGTGCAAACAGACAGACAACAGACAGACAGACAAAAG
CCCGAGTCAGCCGGCCGAACACCCGACAGAGGGCGGAAGGGAAGAAATGCACTGAAGCACTTTATGCT
CCAGCAGAGGGGACAAGCTCGAGGCGGCTTTCTTTGTGCATAGCGAGAACCAGTTGAAAGGCGCGG
AGCGGCCAGCCGCGGGGTGGGAAGGGCTTCCCTGAGGCCAGAGGAAAGGGCCCGTCCCAGAAAGCC
ACCGACGGAGGCAGACAAGCCCAATGGCATGAAACGGTCCCCTCAGCCACTGGGCAGAGTTCTTTCCGA
TCCACGGCCCTCCCGAAAAGTCTCTGAGCTGCTCCTCCAGCTTCCCTGAAACCAGGGCCGGAGTTAGAG
AGGCCTCTGCAGCCAGCAGCGACACTTCTGCCAAGGCCGCGGGGGCATGCTGGAGCTTCCAGCCCC
CAGCAACAGGGACCATAGGAAGGCTCAGCTGCCGGGAGGGCCGAACCCACATGACAAAGAGTGACTCC
CTGCCCTCCTTCCGGTCTCCACCCTGCCTCTGGAGTACACCACCCGACCCAAACACCATGGGCGGGG
CCAGCCACCGGGACAGGGCTCTCTCGGTGACTGCCACCGTAGGGGAAACCAAGGGAAGGACCCTGCCCC
AGCCCAGCCTCCCCAGCTAGGAAACAGAACGTGGGCAGAGACGTGACCAAGCCATCCCCAGCCCCAAAC
ACTGACCGCCCATCTCTTTTCTAATGAGAAGGACTTTGTGGTACGGCAGAGGGGGGAAAGAGAGTT
TGCGTAGCAGCCCTCACAAAAGGCCTTG

```

ACGCGTACGCGGCCGCTCGAG - GFP Tag - GTTTAA

Protein Sequence: >RG228712 representing NM_001164664
 Red=Cloning site Green=Tags(s)

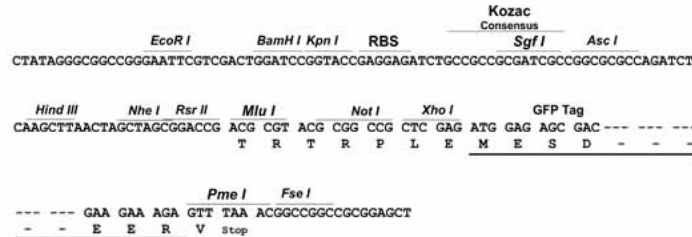
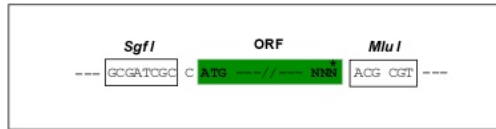
MGEKVSEAPEVPRGCSGHGSRTPASALVAASSPGASSAESSSGSETLSEEGEPGGFSREHQPPPPPLG
 GTLGARAPAAWAPASVLLERGVLALPPPLPGGAVPPAPRGSSASQEEQEELDHILSPPMPFRKCSNP
 VASGPGKSLKYKRQLSEDGRQLRRGSLGGAL TGRYLLPNPVAGQAWPASAETSNLVRMRSQALGQSAPSL
 TASLKELSLPRRGSFCRTSNRKSILIGNGQSPALPRPHSPLSAHAGNSPQDSPRNFSPSASAHSFARRTD
 GRRWSLASLPSSGYGTNTPSSTVSSSCSSQEKLHQLPYQPTDELHFLSKHFCTTESIATENRCRNTPMR
 PRRSRLSPGRSPACCDHEIIMMNHVYKERFPKATAQMEERLKEIITSYSPDNVLPLADGVLSTHHQIE
 LARDCLDKSHQGLITSRYFLELQHKLDKLLQEAHDRSESGELAFIKQLVRKILIVIARPARLLECLEFDP
 EEFYYLLEAAEGHAKGQGIKTIPRYIISQLGLNKDPLEEMAHLGNYDSGTAETPETDESVSSSNASLK
 LRRKPRESDFETIKLISNGAYGAVYVVRHKE SRQRFAMKKINKQNLILRNQIQQAFVERDILTF AENPFV
 VSMYCSFETRRHLCMVMEYVEGGDCATLMKNMGPLPVDMARMYFAETVLALEYLHNYGIVHRDLKPDNLL
 VTMGHIKL TDFGLSKVGLMSMTNL YEGHIEKDAREFLDKQVCGTPEYIAPEVILRQGYGKPVDDWAMG
 IILYEFLVGCVPFFGDTPEELFGQVISDEINWPEKDEAPPPDAQDLITLLLRQNPLERLGTGGAYEVKQH
 RFRFSLDWNLSLRQKAEIFPQLESEDDTSYFDTRSEKYHHMETEEEDDTNDEDFNVEIRQFSSCSHRFSK
 YFSSIDRITQNSAEEKEDSVDKTKSTTLPSTETLSWSSEYSEMQLSTSNSSDTESNRHKLS SGLLPKLA
 ISTEGEQDEAASCPGDPHEEPGKPALPPEECAQEEPEVTPASTISSSTLSVGSFSEHL DQINGRSECVD
 STDNSSKPSSEPASHMARQRL ESTEKKISGKVTKSLSASALSLMIPGDMFAVSP LSGPMSPHLSSDPS
 SSRDSSPSRDSSAASAPHQPIVIHSSGKNYGFTIRAIRVYVGDSDIYTVHHIWNVEEGSPACAGLKA
 GDLIT HINGEPVHGLVHTEVIELLLKSGNKVSIITTPFENTSIKTGPARRNSYKSRMVRRSKSKKESL
 ERRRSLFKKLAKQPSPLLHTSRFSCLNRSLSSGESLPGSPHSLSPRSPTPSYRSTPDPFSGTNSQS
 SPSSSAPNSPAGSGHIRPSTLHGLAPKLGQRYRSGRRKSAGNIPLSPLARTPSPTPQPTSPQRSPL
 GHSLGNSKIAQAFPSKMHSPPTIVRHIVRPKSAEPPRSPLLKRVQSEKLSPSYSGDKKHLCSRKHSLE
 TQEEVQREQSQREAPLQSLDENVCVPPLSRARPVEQGCLKRPVSRKVGREQESVDDLDRDKLKAKVVVK
 ADGFPEKQESHQKSHGPGSDLENFALFKLEEREKVVYPKAVERSTFENKASMQEAPPLGSLLDALHKQ
 ASVRASEGAMSDGRVPAEHRQGGDFRRAPAPGTLQDGLCHSLDRGISGKGEGTEKSSQAKELLRCEKLD
 SKLANIDYLRKKMSLEDKEDNLCVLPKPKMTAGSHECLPGNPVRPTGGQQEPPASESRAFSSTHAAQM
 SAVSFVPLKAL TGRVDSGTEKPLVAPESPVKSPSEYKLEGRSVSCLKPIEGTLDIALLSGPQASKTEL
 PSPESAQSPSPSGDVRASVPPVLPSSSGKNDTTSARELSPSSLKMNKSYLLEPWFLPSPRGLQNSPAVS
 LPDPEFKRDRKGPHTARSPGTVMESNPQQREGSSPKHQDHTTDPKLLTCLGQNLHSPDLARPCPLPE
 ASPSREKPLRESSERGPPTARSERSAARADTCREPSMELCFPETAKTSDNSKNLLSVGRTHPDFYTQTQ
 AMEKAWAPGGKTNHKDGPEARPPRDNSLSHAGIPCEKELGKVRRGVEPKPEALLARRSLQPPGIESE
 KSEKLS SFPQLKDGAKEPERKEQPLQRHPSSIPPPPLTAKDLSSPAARQHCSPPSHASGREPGAKPSTA
 EPSSSPQDPPKPVAHSESSSHKPRGPDGPPKTKHPDRSLSSQKPSVGATKKGEPATQSLGGSSREGK
 GHKSGPDVFPATPGSQNKASDGIQGEGGSPVPLHTDRAPLDAKPQPTSGGRPLEVLEKPVHLPRPGHP
 GPSEPADQKLSAVGEKQTLSPKHPKPSTVKDCPTLCKQTDNRQTDKSPSQPAANTDRRAEGKKCTEALYA
 PAEGDKLEAGLSFVHSENRLKGAERPAAGVGKGFPEARAGKGPQKPPTEADKPNGMKRSPSATGQSSFR
 STALPEKSLSCSSFPETRAGVREASAAASDTS SAKAAGGMLELPAPSNRDRHKAQPAGEGRTHMTKS
 LPSFRVSTLPLESHHPDPNTMGGASHRDRALSVTAVGETKGKDPAPAQPPARKQNVGRDVTKPSAPN
 TDRPISLSNEKDFVVRQRGKESLRSSPHKKAL

TRTRPLE - GFP Tag - V

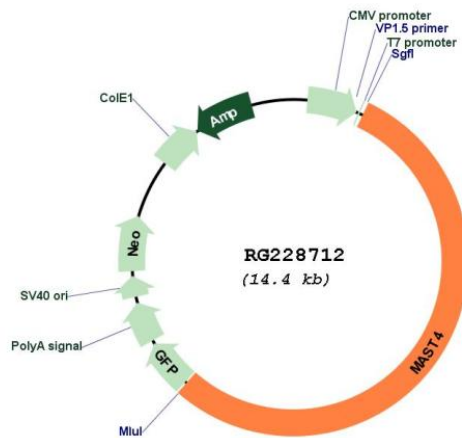
Restriction Sites: SgfI-MluI

Cloning Scheme:

Cloning sites used for ORF Shuttling:



Plasmid Map:



ACCN: NM_001164664

ORF Size: 7869 bp

OTI Disclaimer: The molecular sequence of this clone aligns with the gene accession number as a point of reference only. However, individual transcript sequences of the same gene can differ through naturally occurring variations (e.g. polymorphisms), each with its own valid existence. This clone is substantially in agreement with the reference, but a complete review of all prevailing variants is recommended prior to use. [More info](#)

OTI Annotation: This clone was engineered to express the complete ORF with an expression tag. Expression varies depending on the nature of the gene.

Components:	The ORF clone is ion-exchange column purified and shipped in a 2D barcoded Matrix tube containing 10ug of transfection-ready, dried plasmid DNA (reconstitute with 100 ul of water).
Reconstitution Method:	<ol style="list-style-type: none">1. Centrifuge at 5,000xg for 5min.2. Carefully open the tube and add 100ul of sterile water to dissolve the DNA.3. Close the tube and incubate for 10 minutes at room temperature.4. Briefly vortex the tube and then do a quick spin (less than 5000xg) to concentrate the liquid at the bottom.5. Store the suspended plasmid at -20°C. The DNA is stable for at least one year from date of shipping when stored at -20°C.
RefSeq:	NM_001164664.2
RefSeq Size:	10724 bp
RefSeq ORF:	7872 bp
Locus ID:	375449
UniProt ID:	O15021
Cytogenetics:	5q12.3
Protein Families:	Druggable Genome, Protein Kinase
Gene Summary:	This gene encodes a member of the microtubule-associated serine/threonine protein kinases. The proteins in this family contain a domain that gives the kinase the ability to determine its own scaffold to control the effects of their kinase activities. Alternative splicing results in multiple transcript variants encoding different isoforms. [provided by RefSeq, Mar 2014]