

Product datasheet for **RG228711**

Filamin B (FLNB) (NM_001164318) Human Tagged ORF Clone

Product data:

Product Type: Expression Plasmids
Product Name: Filamin B (FLNB) (NM_001164318) Human Tagged ORF Clone
Tag: TurboGFP
Symbol: FLNB
Synonyms: ABP-278; ABP-280; AOI; FH1; FLN-B; FLN1L; LRS1; SCT; TAPP; TAP
Mammalian Cell Selection: Neomycin
Vector: pCMV6-AC-GFP (PS100010)
E. coli Selection: Ampicillin (100 ug/mL)
ORF Nucleotide Sequence: >RG228711 representing NM_001164318
Red=Cloning site Blue=ORF Green=Tags(s)

TTTTGTAATACGACTCACTATAGGGCGCCGGGAATTCGTCGACTGGATCCGGTACCGAGGAGATCTGCC
GCC**CGATCGCC**

ATGCCGTTAACCGAGAAGGATCTAGCTGAGGACGCGCCTTGAAGAAGATCCAGCAGAACACGTTACAC
GCTGGTCAACGAGCACCTCAAGTGCCTGAACAAACGCATCGGCAACCTGCAGACCGACCTGAGCGACGG
GCTGCGGCTCATCGCGTCTCGAGGTGCTCAGCCAGAAGCGCATGTACCGCAAGTACCATCAGCGGCC
ACCTTTCCGAGATGCAGCTCGAGAATGTGTCCGTGGCGCTCGAGTTCTGGACCGTGCAGCATCAAGC
TCGTGTCCATCGATAGCAAAGCCATTGTGGATGGGAACCTGAAGTCTCATTTGGGTCTGGTGTGGACGCT
GATCCTCCACTACTCCATCTCCATGCCCCGTGTGGGAGGATGAAGGGGATGATGATGCCAAGAAGCAGACG
CCAAAGCAGAGGCTGCTGGGGTGGATTAGAACAAGATCCCCTACTTGCCCATCACCAACTTTAACCAGA
ACTGGCAAGACGGCAAAGCCCTGGGAGCCCTGGTAGACAGCTGTGCTCCAGGTCTGTGCCAGACTGGGA
ATCCTGGGACCCGAGAAGCCTGTGGATAATGCACGAGAAGCCATGCAGCAGGCAGATGACTGGCTGGGT
GTCCCACAGGTCACTCCTGAAGAAATCATTACCCGGATGTGGACGAGCACTCAGTTATGACTTACC
TGTCACAGTCCCAAAGCCAAGCTCAAGCCGGGGCTCCTCTCAAACCCAAACTCAACCCGAAGAAAGC
CAGGGCCTATGGCAGAGGAATCGAGCCCACTGGAACATGGTGAAGCAGCCAGCAAGTTCACTGTGGAC
ACCATCAGCGCCGGCAAGGAGACGTGATGGTGTGGTGGTGGTGGTGGTGGTGGTGGTGGTGGTGGTGGT
AAGTGACCCCTGACAGTGACAAGAACAAGACATACTCTGTGGAGTATCTGCCAAGGTCAACGGGCTACA
CAAAGTACAGTCTCTTTGAGGACAGCACATCTCCAAGAGCCATTTGAAGTGAAGTGTGGTGGTGGTGGTGGT
CAGGGAGATGCCAGTAAAGTCACTGCAAAAGTCCAGGGTTGGAAGCTGTAGGGAACATCGCCAATAAGC
CCACCTACTTTGACATCTATACGGCAGGAGCTGGTGTGGGTGACATTGGTGTGGAGGTGGAAGATCCCCA
GGGAAGAACACCGTGGAGTTGCTCGTGGAAAGACAAAGGAAACCAGGTGTATCGATGTGTGTACAAACCC
ATGCAGCTGGCCCTCACGTGGTCAAGATCTTCTTTGCTGGGACACTATTCCTAAGAGTCCCTTCGTTG
TGCAGGTTGGGAAGCCTGCAATCCAAATGCCTGCCGGGCCAGTGGCCGAGGCCACAACCCAAAGCGT
CCGTATCCGGGAGACCACAGATTTCAAGTTGACACCAAAGCTGCAGGAAGTGGGGAGCTCGGTGTAACC



[View online >](#)

ATGAAGGGTCTAAGGGTCTGGAGGAGCTGGTGAAGCAGAAAGACTTTCTGGATGGGGTCTACGCATTCCG
AGTATTACCCAGCACCCCGGGGAGATACAGCATTGCCATCACATGGGGGGACACCACATTCCAAGAG
CCCCTTTGAAGTTCAAGTTGGCCCTGAAGCGGGTATGCAGAAAGTCCGTGCTTGGGGCCCTGGGCTCCAT
GGTGGGATTGTCGGGCGGTACAGCGGACTTCGTGGTAGAATCCATTGGCTCTGAAGTGGGGTCTCTGGGGT
TTGCCATTGAAGGCCCTCTCAGGCAAAGATTGAGTACAACGACCAGAATGATGGATCGTGTGATGTCAA
ATACTGGCCCAAGGAGCCTGGCGAATATGCTGTTACATCATGTGTGACGACGAAGACATCAAGGACAGC
CGGTACATGGCCCTCATCCACCCAGCCAGCGGAGGCTACAACCCCTGATCTGGTTCGAGCATACGGGCCAG
GTTTGGAGAAATCTGGATGCATTGTCAACAACCTGGCCGAGTTCCTACTGTGGATCCCTAAGGATGCTGGAAA
AGCTCCCTTAAAGATATTTGCTCAGGATGGGGAAGGCCAACGCATTGACATCCAGATGAAGAACCGGATG
GACGGCACATATGCATGCTCATAACCCCGGTGAAGGCCATCAAGCACACCATTGCTGTGGTCTGGGGAG
GCGTGAACATCCCGCACAGCCCTACAGGGTCAACATCGGGCAAGGTAGCCATCCTCAGAAGGTCAAAGT
GTTTGGGCCAGGTGTGGAGAGAAGTGGTCTGAAGGCAAATGAACCTACACACTTCACGGTGGACTGTACT
GAGGCTGGGGAAGGTGATGTCAGTGTGGCATTAAAGTGTGATGCCCGGTGTTAAGTGAAGATGAGGAAG
ACGTGGATTTTGACATTATTCACAATGCCAATGATACGTTACAGTCAAATATGTGCCTCCTGCTGCTGG
GCGATACACTATCAAAGTTCTTTGCATCTCAGGAAATCCCGCCAGCCCTTTCAGAGTCAAAGTTGAC
CCTTCCACAGATGCCAGCAAAGTGAAGGAGAAGGCCAGGGCTCAGCAAAGCAGGTGTGAAAAATGGGA
AACCGACCCACTTCACTGTCTACACCAAGGGGGCTGGGAAAGCCCGCTCAACGTGCAGTTCAACAGCCC
TCTTCTGGCGATGCAGTGAAGGATTTGGATATCATCGATAATTATGACTACTCTCACACGGTAAATAT
ACACCCACCAACAGGGCAACATGCAGGTTCTGGTGACTTACGGTGGCGATCCCATCCCTAAAAGCCCTT
TCACTGTGGGTGTTGCTGCACCGCTGGATCTGAGCAAGATAAACTCAATGGGCTGGAAAACAGGGTGA
AGTTGGGAAGGATCAGGAGTTACCCTGTGATACCAGGGGGCAGGAGGCCAGGGGAAGCTGGACGTGACA
ATCCTCAGCCCTCTCGAAGGTCTGCCATGCCTAGTACACCTGTGACAGGCCGGGAGAACAGCAGCG
CCAAGTTCATCCCTCGGAGGAGGGGCTGTATGCTGTAGACGTGACCTACGATGGACACCCCTGTCCCGG
GAGCCCTACACAGTGGAGGCTCGCTGCCACAGATCCAGCAAGGTGAAGGCCACGGTCCCGCCGCTC
GAAGGTGGTCTCGTGGGCAAGCCTGCCGAGTTCACCATCGATACCAAAGGAGCTGGTACTGGAGGTCTGG
GCTTAACGGTGAAGGTCGTGCGAGGCCAAAATCGAGTCTCCGACAATGGTGTGGGACCTGCTCCGT
CTCTTACCTTCCACAAAACCCGGGAGTACTTCGTCAACATCCTCTTTGAAGAAGTCCACATACCTGGG
TCTCCCTTCAAAGCTGACATTGAAATGCCCTTTGACCCCTCAAAGTCTGGCATCGGGCCAGGTCTCG
AGCACGGGAAGGTGGGTGAAGCTGGCCTCCTTAGCGTGCAGTCTCGAAGCGGGACCGGGGCCCTGGG
CCTGGAAGCTGTCTCGGACTCGGGAACAAAAGCCGAAGTCAAGTATTCAGAACAAAGATGGCACCTAC
GCGGTGACCTACGTGCCCTGACGGCCGGCATGTACACGTTGACCATGAAGTATGGTGGCGAACTCGTGC
CACACTTCCCGCCCGGGTCAAGGTGGAGCCCGCGTGGACACCAGCAGGATCAAAGTCTTTGGACCAGG
AATAGAAGGGAAGATGTGTTCCGGGAAGCTACCACCGACTTTACAGTTGACTCTCGGCCGTGACCCAG
GTTGGGGTGACACATCAAGGCCACATTGCCAACCCCTCAGGGGCTCCACCGAGTGTCTTGTACACAG
ACAATGCGGATGGGACCTACCAGGTGGAATACACACCCCTTGGAGAAAGTCTCCATGTAGTGGAGGTGAC
ATATGATGACGTGCCTATCCCAAACAGTCCCTTCAAGGTGGTGTCACTGAAGGCTGCCAGCCATCTAGG
GTGCAAGCCAAAGGACCTGGATTGAAAGAGGCCCTTACCAACAAGCCCAATGTCTTACCCTGGTTACCA
GAGGCGCAGGAATTGGTGGCTTGGCATAACTGTTGAGGGACCATCAGAGTGAAGATAAATTCAGAGA
CAACAAGGATGGCAGCTGCAGTGTGATACATTCCTTTCCGACCGGGGATTACGATGTTAATATCACA
TATGGAGGAGCCACATCCCGGACGCCCTTACGGGTTCTGTGAAGGATGTTGTGGACCCAGCAAGG
TCAAGATTGCCGCCCCGGGCTGGGCTCAGGCGTCCGAGCCCGTGTCTGCAAGTCTTACGGTGGACAG
CAGCAAGGCTGGCTGGCTCCGCTGGAAGTGAAGGTTCTGGGCCACGAGGCTTGGTGGAGCCAGTGAAC
GTGGTGGACAATGGAGATGGCACACACAGTAACCTACACCCCATCTCAGGAGGACCTTACATGGTCT
CAGTTAAATATGCTGATGAAGAGATTCTCGCAGTCCCTTCAAGGTCAAGGCTCTCCACATATGATGC
CAGCAAAGTACTGCCAGTGGCCCCGGCCTTAGTTCTATGGTGTGCTGCCAGTCTACCTGTGGACTTT
GCAATTGATGCCGAGATGCCGGGAAGGCTGCTTGTGTTCAAATAACGGACCAAGAAGGAAAACCCA
AAAGAGCCATTGTCCATGACAATAAAGATGGCACGTATGCTGTCACTACATCCCGACAAGACTGGGCG
CTATATGATTGGAGTCACTACGGGGTACGACATCCCACTTTCTCCTTATCGCATCCGAGCCACACAG
ACGGGTGATGCCAGCAAGTCCCTGGCCACGGGTCTGGAATCGCCTCCACTGTGAAAACCTGGCGAAGAG
TAGGCTTTGTGGTTGATGCCAAGACTGCCGGGAAGGTTAAAGTGACCTGCACGGTCTGACCCAGATGG
CACTGAGGCCGAGGCCGATGTCATTGAGAATGAAGATGGAACCTATGACATCTTCTACACAGCTGCCAAG
CCGGGCACATATGTGATCTATGTGCGCTTCGGTGGTGTGATATTCCTAACAGCCCTTCACTGTGATGG

CCACAGATGGGGAAGTCACAGCCGTGGAGGAGGCACCGGTGACCGAAGAGGCCTATGTCCCAGTGAGTGA
CATGAACGGCCTGGGATTTAAGCCTTTTGACCTGGTCATTCCGTTTGCTGTGAGGAAAGGAGAAATCACT
GGAGAGGTCCACATGCCTTCTGGGAAGACAGCCACACCTGAGATTGTGGACAACAAGGACGGCACGGTCA
CTGTTAGATATGCCCCACTGAGGTCGGGCTCCATGAGATGCACATCAAATACATGGGCAGCCACATCCC
TGAGAGCCCACTCCAGTTCTACGTGAACTACCCCAACAGTGAAGTGTCTGCATACGGTCCAGGCCTC
GTGTATGGAGTGGCCAACAAAACCTGCCACCTTCACCATCGTACAGAGGATGCAGGAGAAGGTGGTCTGG
ACTTGGCTATTGAGGGCCCTCAAAGCAGAAAACAGCTGCATTGACAATAAAGATGGGACATGCACAGT
GACCTACCTGCCGACTCTGCCAGGCGACTACAGCATTCTGGTCAAGTACAATGACAAGCACATCCCTGGC
AGCCCCCTCACAGCCAAGATCACAGATGACAGCAGGCGGTGCTCCCAGGTGAAGTTGGGCTCAGCCGCTG
ACTTCTGCTCGACATCAGTGAGACTGACCTCAGCAGCCTGACGGCCAGCATTAAAGGCCCATCTGGCCG
AGACGAGCCCTGTCTCCTGAAGAGGCTGCCAACAACCACATTGGCATCTCCTTCATCCCCGGGAAGTG
GGCAACATCTGGTCAGCATCAAGAAAATGGCAACCATGTGGCCAACAGCCCCGTGTCTATCATGGTGG
TCCAGTCGGAGATTGGTGACGCCCGCCGAGCCAAAGTCTATGGCCGCGGCTGTGAGAAGCCGGACTTT
CGAGATGTCTGACTTCATCGTGGACACAAGGGATGCAGGTTATGGTGGCATATCCTTGGCGGTGGAAGGC
CCCAGCAAAGTGGACATCCAGACGGAGGACCTGGAAGATGGCACCTGCAAAGTCTCTACTTCCCTACCG
TGCTGGGGTTTATATCGTCTCCACAAATTCCGCTGACGAGCACGTGCCTGGGAGCCATTTACCGTGAA
GATCAGTGGGGAGGAAGAGTCAAAGAGAGCATACCCCGACCAGTCGGGCCCGTCCGTGGCCACTGTG
GGGAGCATTTGTGACCTGAACCTGAAAATCCCAGAAAATCAACAGCAGTGATATGTCGGCCACGTACCA
GCCCTCTGGCGTGTGACTGAGGCAGAGATTGTGCCATGGGGAAGAACTCACACTGCGTCCGGTTTGT
GCCCCAGGAGATGGGCGTGCACACGGTCAGCGTCAAGTACCGTGGGCAGCACGTACCCGGCAGCCCTTC
CAGTTCACCGTGGGGCCACTTGGTGAAGGAGGCGCCACAAGGTGCGGGCAGGAGGCCCTGGCCTGGAGA
GAGGAAAGCGGGAGTCCAGCTGAGTTCAGCATTGGACCCGGAAGCAGGCGCTGGAGGCCCTCCAT
CGCTGTTGAGGGCCCCAGTAAGGCCGAGATTACATTGATGACCATAAAAATGGGTGCTGCGGTGTATCT
TATATTGCCCAAGAGCCTGGTAACTACGAGGTGTCCATCAAGTTCAATGATGAGCACATCCCGAAAGCC
CCTACCTGGTGCCGTCATCGCACCCCTCCGACGACGCCCCGCCCTCACTGTTATGAGCCTTCAGGAATC
GGGATTAAGGTTAACCAGCCAGCATCCTTTGCTATAAGGTTGAATGGCGCAAAGGCAAGATTGATGCA
AAGGTGCACAGCCCTCTGGAGCCGTGGAGGAGTGCCACGTGTCTGAGCTGGAGCCAGATAAGTATGCTG
TTCGTTTATCCCTCATGAGAATGGTGTCCACACCATCGATGTCAAGTTCAATGGGAGCCACGTGGTTGG
AAGCCCCTTCAAAGTGCAGCTGGGGAGCCTGGACAAGCGGGGAACCCTGCCCTGGTGTCCGCTATGGC
ACGGGACTCGAAGGGGGCACCACAGGTATCCAGTCGGAATCTTTATTAACACCACCCGAGCAGGTCCAG
GGACATTATCCGTACCATCGAAGGCCATCCAAGGTTAAAATGGATTGCCAGGAAACACCTGAAGGGTA
CAAAGTCAATGACACCCCATGGCTCCTGGTAACTACCTGATCAGCGTCAAATACGGTGGGCCCAACCAC
ATCGTGGGAGTCCCTTCAAAGGCCAAGGTGACAGGCCAGCGTCTAGTTAGCCCTGGCTCAGCCAACGAGA
CCTCATCCATCCTGGTGGAGTCACTGACAGGTCGTCTACAGAGACCTGTATAGCGCCATTCCCAAGGC
ATCCTCGGACGCCAGCAAGGTGACCTCTAAGGGGGCAGGGCTCTCAAAGGCCCTTGTGGGCCAGAAGAGT
TCCTTCTGGTGGACTGCAGCAAAGTGGCTCCAAATGCTGCTGATCGGGTCCATGGGCCACCAACC
CCTGCGAGGAGTCTCCATGAAGCATGTAGGCAACCAGCAATACAACGTACATACGTGTAAGGAGAG
GGGCGATTATGTGCTGGCTGTGAAGTGGGGGAGGAACACATCCCTGGCAGCCCTTTTATGTACAGTG
CCT

ACGCGTACGCGGCCGCTCGAG - GFP Tag - GTTTAA

Protein Sequence: >RG228711 representing NM_001164318
 Red=Cloning site Green=Tags(s)

```

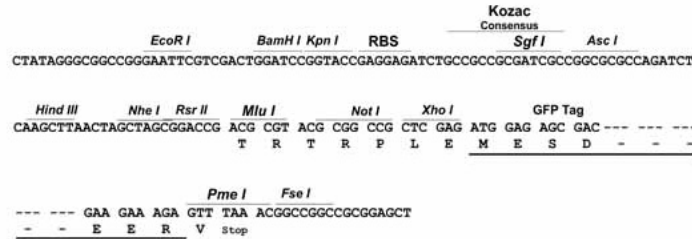
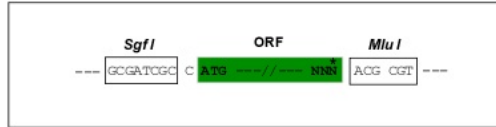
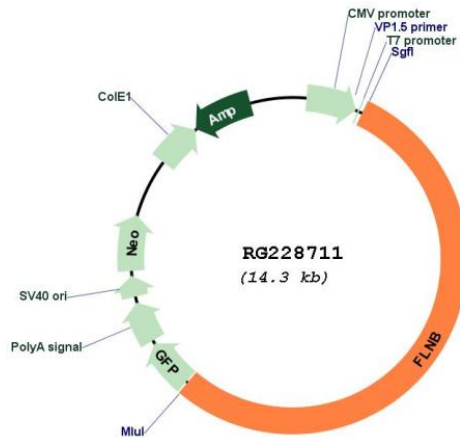
MPVTEKDLAEDAPWKKIQNTFTRWCNEHLKCVNKRIGNLQTDLSGLRLIALLEVLSQLRMYRKYHQRP
TFRQMLENVSVALEFLDRESIKLVSIDSKAIVDGNLKLILGLVWTLILHYSISMPVWEDEGDDDAKKQT
PKQRLLGWIQNKIPYLPITNFNQNWQDGKALGALVDSAPGLCPDWESWDPQKPVNAREAMQQADDWLG
VPQVITPEEIIHPDVDEHSMVTYLSQFPKAKLKPGLPKPLNPKKARAYGRGIEPTGNMVKQPAKFTVD
TISAGQGDVMVFVEDPEGNKEEAQVTPDSDKNKTYSEYLPKVTGLHKVTVLFAGQHIKSPFEVSVDKA
QGDASKVTAKGPGLEAVGNIANKPTYFDIYTAGAGVGDIGVEVEDPQGGKNTVELLVEDKGNQVYRCVYKP
MQPGPHVVKIFFAGDTIPKSPFVQVGEACNPACRASGRGLQPKGVRIRETTDFKVDTKAAGSGELGVT
MKGPKGLEELVKQKDFLDGVYAFEYYPSTPGRYSIAITWGGHHIPKSPFEVQVGEAGMVKVRAWGPGLH
GGIVGRSADFVVEISIGSEVGSGLGFAIEGPSQAKIEYNDQNDGSCDVKYWPKEPGEYAVHIMCDEDEDKDS
PYMAFIHPATGGYNPDLVRAYGPLEKSGCIVNNLAFTVDPKDAGKAPLKIFAQDGEQQRIDIQMKNRM
DGTYACSYTPVKAIKHTIAVWGGVNIHPSPYRVNIGQGSHPQKVKVFGPGVERSGLKANEPHTFTVDCT
EAGEGDVSVGIKCDARVLSDEEDVDFDIHNANDTFTVKYVPPAAGRYTIKVLFASQEIPASPFVRKVD
PSHDASKVKAEGPGLSKAGVENKPTHTFYTKGAGKAPLNVQFNSPLPGDAVKDLIDIINDYDYSHTVKY
TPTQQGNMQVLVTYGGDPIPKSPFTVGVAAPLDLSKIKLNGLENRVEVKGDKQEFVTDTRGAGGQGLDVT
ILSPSRKVVVCLVTPVTGRENSTAKFIPREEGLYAVDVTYDGHVPVPGSPYTVESLPPDPSKVKAHGPG
EGGLVGKPAEFTIDTKGAGTGGLGLTVEGPCEAKIECSNDGDTCSVSYLPTKPGEYFVNILFEEVHIPG
SPFKADIEMPFDPKVVASGPGLEHGKVGEGAGLSVDCSEAGPGALGLEAVSDSGTAEVSIQNNKDGTY
AVTYVPLTAGMYLTMKYGGELVPHFPARVKVEPAVDTSRIKVFPGPIEGKDFREATDFVDSRPLTQ
VGGDHIAKAIANPSGASTECEFTDNADGTYQVEYTPFEKGLHVVEVTVDDVPIPNSPFKVAVTEGCQPSR
VQAQPGLEKEAFNKNPVFTVTRGAGIGGLGITVEGPSESKINCRDNKDGSCSAEYIPFAPGDYDVNIT
YGAHIPPSPFRVPKDVVDPSKVKIAGPGLGSGVRRARVLSFTVDSKAGLAPLEVRVLGPRGLVEPVN
VVDNGDGTHVTYTPSQEGPYMVSVKYADEEIPRSPFKVKVLPPTYDASKVTASGPGLSYVGPASLPVDF
AIDARDAGEGLLAVQITDQEGPKRAIVHDNKDGTAVTYIPDKTGRYMIQVTVYGGDDIPLSPYRIRATQ
TGDASKCLATGPGIASTVKTGEEVGFVVDAKTAGKGVCTVLTDPGTEAEADVIENEDGTYDIFYTAAK
PGTYVIYVRFGGVDIPNSPFTVMATDGEVTAVEEAPVTEEAAYVPVSDMNGLGFKPFDLVIPFAVRKGEIT
GEVHMPSGKTATPEIVDNKDGTVTVRYAPTEVGLHEMHIKYMGSHPESPLQFYVNYPNSGSVSAYGPG
VYGVANKTATFTIVTEDAGEGGLDLAIEGPSKAEISCIDNKDGTCTVYLPPLPGDYSILVKYNDKHIPG
SPFTAKITDSSRRCQVKGSAADFLLDISETDLSSLTASIKAPSGRDEPCLLKRPNNHIGISIFPREV
GEHLVSIKKNGNHVANSVPSIMVVQSEIGDARRAKVYGRGLSEGRTFEMSDFIVDTRDAGYGGISLAVEG
PSKVDIQTEDLEDGTCKVSYFPTVPGVYIVSTKFADEHVPGSPFTVKISGEGRVKESITRTRSPASVATV
GSICDLNLKIPENSSDMSAHVTSVSGRVTEAEIVPMGKNSHCVRFPVQEMGVHTVSVKYRQGHVTSPPF
QFTVGPGLGEGGAHKVRAGGPGLEGERGAGVPAEFSIWTREAGAGGLSIAVEGPSKAEITFDDHKNGSCGVS
YIAQEPGNYEVSIKFNDEHIPESPYLVPVIAPSDARRLTVMSLQESGLKVNQPASFAIRLNGAKGKIDA
KVHSPSGAVEECHVSELEPKYAVRFIPHENGVHTIDVKFNGSHVVGSPFKVVRVGEPPQAGNPALVSAYG
TGLEGGTTGIQSEFFINTTRAGPGTLSVTIEGPSKVKMDCQETPEGYKVMYTPMAPGNLISVKYGGPNH
IVGSPFKAKVTGQRLVSPGSANETSSILVESVTRSSSTETCYSAIPKASSDASKVTSKGAGLSKAFVGQKS
SFLVDCSKAGSNMLLIGVHGPTTPCEEVSMKHVGNQYQYVNVYVVKERGDYVLAVKWGEHHPGSPFHVTY
P
  
```

TRTRPLE - GFP Tag - V

Restriction Sites: SgfI-MluI

Cloning Scheme:

Cloning sites used for ORF Shutting:


Plasmid Map:

ACCN: NM_001164318

ORF Size: 7773 bp

OTI Disclaimer: The molecular sequence of this clone aligns with the gene accession number as a point of reference only. However, individual transcript sequences of the same gene can differ through naturally occurring variations (e.g. polymorphisms), each with its own valid existence. This clone is substantially in agreement with the reference, but a complete review of all prevailing variants is recommended prior to use. [More info](#)
OTI Annotation: This clone was engineered to express the complete ORF with an expression tag. Expression varies depending on the nature of the gene.

Components:	The ORF clone is ion-exchange column purified and shipped in a 2D barcoded Matrix tube containing 10ug of transfection-ready, dried plasmid DNA (reconstitute with 100 ul of water).
Reconstitution Method:	<ol style="list-style-type: none">1. Centrifuge at 5,000xg for 5min.2. Carefully open the tube and add 100ul of sterile water to dissolve the DNA.3. Close the tube and incubate for 10 minutes at room temperature.4. Briefly vortex the tube and then do a quick spin (less than 5000xg) to concentrate the liquid at the bottom.5. Store the suspended plasmid at -20°C. The DNA is stable for at least one year from date of shipping when stored at -20°C.
RefSeq:	NM_001164318.2
RefSeq Size:	9434 bp
RefSeq ORF:	7776 bp
Locus ID:	2317
UniProt ID:	O75369
Cytogenetics:	3p14.3
Protein Pathways:	Focal adhesion, MAPK signaling pathway
Gene Summary:	This gene encodes a member of the filamin family. The encoded protein interacts with glycoprotein Ib alpha as part of the process to repair vascular injuries. The platelet glycoprotein Ib complex includes glycoprotein Ib alpha, and it binds the actin cytoskeleton. Mutations in this gene have been found in several conditions: atelosteogenesis type 1 and type 3; boomerang dysplasia; autosomal dominant Larsen syndrome; and spondylocarpotarsal synostosis syndrome. Multiple alternatively spliced transcript variants that encode different protein isoforms have been described for this gene. [provided by RefSeq, Nov 2009]