

Product datasheet for **RG228710**

Filamin B (FLNB) (NM_001164319) Human Tagged ORF Clone

Product data:

Product Type:	Expression Plasmids
Product Name:	Filamin B (FLNB) (NM_001164319) Human Tagged ORF Clone
Tag:	TurboGFP
Symbol:	FLNB
Synonyms:	ABP-278; ABP-280; AOI; FH1; FLN-B; FLN1L; LRS1; SCT; TABP; TAP
Mammalian Cell Selection:	Neomycin
Vector:	pCMV6-AC-GFP (PS100010)
E. coli Selection:	Ampicillin (100 ug/mL)
ORF Nucleotide Sequence:	>RG228710 representing NM_001164319 Red=Cloning site Blue=ORF Green=Tags(s)

TTTTGTAATACGACTCACTATAGGGCGGCCGGAATTCGTCGACTGGATCCGGTACCGAGGAGATCTGCC
GCC**CGATCGCC**

ATGCCGTAACCGAGAAGGATCTAGCTGAGGACGCGCCTTGAAGAAGATCCAGCAGAACACGTTACAC
GCTGGTCAACGAGCACCTCAAGTGCCTGAACAAACGCATCGGCAACCTGCAGACCGACCTGAGCGACGG
GCTGCGGCTCATCGCGTCTCGAGGTGCTCAGCCAGAAGCGCATGTACCGCAAGTACCATCAGCGGCC
ACCTTTCGCCAGATGCAGCTCGAGAATGTGTCCGTGGCGCTCGAGTTCCTGGACCGTGCAGCATCAAG
TCGTGTCCATCGATAGCAAAGCCATTGTGGATGGGAACCTGAAGTCTCATTTGGGTCTGGTGTGGACGCT
GATCCTCCACTACTCCATCTCCATGCCCCGTGTGGGAGGATGAAGGGGATGATGATGCCAAGAAGCAGACG
CCAAAGCAGAGGCTGCTGGGGTGGATTAGAACAAGATCCCCTACTTGCCCATCACCAACTTTAACCAGA
ACTGGCAAGACGGCAAAGCCCTGGGAGCCCTGGTAGACAGCTGTGCTCCAGGTCTGTGCCAGACTGGGA
ATCCTGGGACCCGAGAAGCCTGTGGATAATGCACGAGAAGCCATGCAGCAGGCAGATGACTGGCTGGGT
GTCCCACAGGTCACTCCTGAAGAAATCATTACCCGGATGTGGACGAGCACTCAGTTATGACTTACC
TGTCACAGTTCCTCAAGCAAGCTCAAGCCGGGGCTCCTCTCAAACCCAAACTCAACCCGAAGAAAGC
CAGGGCCTATGGCAGAGGAATCGAGCCACTGGAACATGGTGAAGCAGCCAGCAAGTTCAGTGTGGAC
ACCATCAGCGCCGGCAAGGAGACGTGATGGTGTGGTGGTGGTGGTGGTGGTGGTGGTGGTGGTGGTGGT
AAGTGACCCCTGACAGTGACAAGAACAAGACATACTCTGTGGAGTATCTGCCAAGGTCAACGGGCTACA
CAAAGTACAGTCTCTTTGAGGACAGCACATCTCCAAGAGCCATTTGAAGTGAAGTGTGGTGGTGGTGGT
CAGGGAGATGCCAGTAAAGTCACTGCAAAAGTCCAGGGTTGGAAGCTGTAGGGAACATCGCCAATAAGC
CCACCTACTTTGACATCTATACGGCAGGAGCTGGTGTGGGTGACATTGGTGTGGAGGTGGAAGATCCCCA
GGGAAGAACACCGTGGAGTTGCTCGTGGAAAGACAAAGGAAACCAGGTGTATCGATGTGTGTACAAACCC
ATGCAGCTGGCCCTCACGTGGTCAAGATCTTCTTTGCTGGGGACACTATTCCTAAGAGTCCCTTCGTTG
TGCAGGTTGGGAAGCCTGCAATCCAAATGCCTGCCGGGCCAGTGGCCGAGGCCACAACCCAAAGCGT
CCGTATCCGGGAGACCACAGATTTCAAGTTGACACCAAAGCTGCAGGAAGTGGGGAGCTCGGTGTAACC



[View online »](#)

ATGAAGGGTCTAAGGGTCTGGAGGAGCTGGTGAAGCAGAAAGACTTTCTGGATGGGGTCTACGCATTCCG
 AGTATTACCCAGCACCCCGGGGAGATACAGCATTGCCATCACATGGGGGGACACCACATTCCAAGAG
 CCCCTTGAAGTTCAAGTTGGCCCTGAAGCGGGTATGCAGAAAGTCCGTGCTTGGGGCCCTGGGCTCCAT
 GGTGGGATTGTGGGGCGTACGCGGACTTCGTGGTAGAATCCATTGGCTCTGAAGTGGGGTCTCTGGGGT
 TTGCCATTGAAGGCCCTCTCAGGCAAAGATTGAGTACAACGACCAGAATGATGGATCGTGTGATGTCAA
 ATACTGGCCAAAGGAGCCTGGCGAATATGCTGTTACATCATGTGTGACGACGAAGACATCAAGGACAGC
 CCGTACATGGCCCTCATCCACCCAGCCAGCGGAGGCTACAACCCCTGATCTGGTTCGAGCATACGGGCCAG
 GTTTGGAGAAATCTGGATGCATTGTCAACAACCTGGCCGAGTTCCTACTGTGGATCCCTAAGGATGCTGGAAA
 AGCTCCCTTAAAGATATTTGCTCAGGATGGGGAAGGCCAACGCATTGACATCCAGATGAAGAACCGGATG
 GACGGCACATATGCATGCTCATAACCCCGGTGAAGGCCATCAAGCACACCATTGCTGTGGTCTGGGGAG
 GCGTGAACATCCCGCACAGCCCTACAGGGTCAACATCGGGCAAGGTAGCCATCCTCAGAAGGTCAAAGT
 GTTTGGGCCAGGTGTGGAGAGAAGTGGTCTGAAGGCAAATGAACCTACACACTTCACGGTGGACTGTACT
 GAGGCTGGGGAAGGTGATGTCAGTGTGGCATTAAAGTGTGATGCCCGGTGTTAAGTGAAGATGAGGAAG
 ACGTGGATTTTGACATTATCACAATGCCAATGATACGTTACAGTCAAATATGTGCCTCCTGCTGCTGG
 GCGATACACTATCAAAGTTCTTTGCATCTCAGGAAATCCCGCCAGCCCTTTCAGAGTCAAAGTTGAC
 CCTTCCACAGATGCCAGCAAAGTGAAGGAGAAGGCCAGGGCTCAGCAAAGCAGGTGTGAAAAATGGGA
 AACCGACCCACTTCACTGTCTACACCAAGGGGGCTGGGAAAGCCCGCTCAACGTGCAGTTCAACAGCCC
 TCTTCTGGCGATGCAGTGAAGGATTTGGATATCATCGATAATTATGACTACTCTCACACGGTAAATAT
 ACACCCACCAACAGGGCAACATGCAGGTTCTGGTGACTTACGGTGGCGATCCCATCCCTAAAAGCCCTT
 TCACTGTGGGTGTTGCTGCACCGCTGGATCTGAGCAAGATAAACTCAATGGGCTGGAAAACAGGGTGGGA
 AGTTGGGAAGGATCAGGAGTTACCCTGTGATACCAGGGGGCAGGAGGCCAGGGGAAGCTGGACGTGACA
 ATCCTCAGCCCTCTCGAAGGTCTGCCATGCCTAGTACACCTGTGACAGGCCGGGAGAACAGCAGCG
 CCAAGTTCATCCCTCGGAGGAGGGGCTGTATGCTGTAGACGTGACCTACGATGGACACCCCTGTCCCGG
 GAGCCCTACACAGTGGAGGCTCGCTGCCACAGATCCAGCAAGGTGAAGGCCACGGTCCCGCCGCTC
 GAAGGTGGTCTCGTGGGCAAGCCTGCCGAGTTCACCATCGATACCAAAGGAGCTGGTACTGGAGGTCTGG
 GCTAACGGTGAAGGTCGTGCGAGGCCAAAATCGAGTCTCCGACAATGGTGTGGGACTGCTCCGT
 CTCTTACCTTCCACAAAACCCGGGAGTACTTCGTCAACATCCTCTTTGAAGAAGTCCACATACCTGGG
 TCTCCCTTCAAAGCTGACATTGAAATGCCCTTTGACCCCTCTAAAGTCTGGCATCGGGCCAGGTCTCG
 AGCACGGGAAGGTGGGTGAAGCTGGCCTCCTTAGCGTGCAGTCTCGGAAGCGGGACCGGGGCCCTGGG
 CCTGGAAGCTGTCTCGGACTCGGGAACAAAAGCCGAAGTCAAGTATCAGAACAAAGATGGCACCTAC
 GCGGTGACCTACGTGCCCTGACGGCCGGCATGTACACGTTGACCATGAAGTATGGTGGCGAACTCGTGC
 CACACTTCCCGCCCGGGTCAAGGTGGAGCCCGCGTGGACACCAGCAGGATCAAAGTCTTTGGACCAGG
 AATAGAAGGGAAGATGTGTTCCGGGAAGCTACCACCGACTTTACAGTTGACTCTCGGCCGTGACCCAG
 GTTGGGGTGACACATCAAGGCCACATTGCCAACCCCTCAGGGGCTCCACCGAGTGTCTTGTACACAG
 ACAATGCGGATGGGACCTACCAGGTGGAATACACACCCCTTGGAGAAAGTCTCCATGTAGTGGAGGTGAC
 ATATGATGACGTGCCTATCCCAAACAGTCCCTTCAAGGTGGTGTCACTGAAGGCTGCCAGCCATCTAGG
 GTGCAAGCCAAAGGACCTGGATTGAAAGAGGCCCTTACCAACAAGCCCAATGTCTTACCCTGGTTACCA
 GAGGCGCAGGAATTGGTGGCTTGGCATAACTGTTGAGGGACCATCAGAGTGAAGATAAATTCAGAGA
 CAACAAGGATGGCAGCTGCAGTGTGAGTACATTCCTTTCCGACCGGGGATTACGATGTTAATATCACA
 TATGGAGGAGCCACATCCCGGAGCCCTTACGGGTTCTGTGAAGGATGTTGTGGACCCAGCAAGG
 TCAAGATTGCCGCCCCGGGCTGGGCTCAGGCGTCCGAGCCCGTGTCTGCAAGTCTTACGGTGGACAG
 CAGCAAGGCTGGCTGGCTCCGCTGGAAGTGAAGGTTCTGGGCCACGAGGCTTGGTGGAGCCAGTGAAC
 GTGGTGGACAATGGAGATGGCACACACAGTAACCTACACCCCATCTCAGGAGGACCTTACATGGTCT
 CAGTTAAATATGCTGATGAAGAGATTCTCGCAGTCCCTTCAAGGTCAAGGCTCTCCACATATGATGC
 CAGCAAAGTACTGCCAGTGGCCCGGCTTAGTTCTATGGTGTGCTGCCAGTCTACCTGTGGACTTT
 GCAATTGATGCCGAGATGCCGGGAAGGCTGCTTGTGTTCAAATAACGGACCAAGAAGGAAAACCCA
 AAAGAGCCATTGTCCATGACAATAAAGATGGCACGTATGCTGTCACTACATCCCGACAAGACTGGGCG
 CTATATGATTGGAGTCACTACGGGGTGGACACATCCCACTTTCTCCTTATCGCATCCGAGCCACACAG
 ACGGGTGTGCCAGCAAGTGCCTGGCCACGGGTCTGGAATCGCCTCCACTGTGAAAACCTGGCGAAGAG
 TAGGCTTTGTGGTTGATGCCAAGACTGCCGGGAAGGTTAAAGTGACCTGCACGGTCTGACCCAGATGG
 CACTGAGGCCGAGGCCGATGTCATTGAGAATGAAGATGGAACCTATGACATCTTCTACACAGCTGCCAAG
 CCGGGCACATATGTGATCTATGTGCGCTTCGGTGGTGTGATATTCCTAACAGCCCTTCACTGTGATGG

TGACCGAAGAGGCCTATGTCCCAGTGAGTGACATGAACGGCCTGGGATTTAAGCCTTTTGACCTGGTCAT
TCCGTTTTGCTGTGAGAAAGGAGAAATCACTGGAGAGGTCCACATGCCTTCTGGGAAGACAGCCACACCT
GAGATTGTGGACAACAAGGACGGCACGGTCACTGTTAGATATGCCCCACTGAGGTCGGGCTCCATGAGA
TGCACATCAAATACATGGGCAGCCACATCCCTGAGAGCCCACTCCAGTTCTACGTGAACTACCCCAACAG
TGGAAAGTGTTCGCATACGGTCCAGGCCTCGTGTATGGAGTGGCCAACAAAACCTGCCACCTTACCATC
GTCACAGAGGATGCAGGAGAAGGTGGTCTGGACTTGGCTATTGAGGGCCCTCAAAGCGAAATCAGCT
GCATTGACAATAAAGATGGGACATGCACAGTGACCTACCTGCGGACTCTGCCAGGGCACTACAGCATTCT
GGTCAAGTACAATGACAAGCACATCCCTGGCAGCCCTTCACAGCCAAGATCACAGATGACAGCAGGCGG
TGCTCCCAGTGAAGTTGGGCTCAGCCGCTGACTTCTGCTCGACATCAGTGAGACTGACCTCAGCAGCC
TGACGGCCAGCATTAAAGGCCCATCTGGCCGAGACGAGCCCTGTCTCCTGAAGAGGCTGCCCAACAACCA
CATTGGCATCTCCTTATCCCCGGGAAGTGGCGAACATCTGGTCAGCATCAAGAAAAATGGCAACCAT
GTGGCCAAACAGCCCCGTGTCTATCATGGTGGTCCAGTCGGAGATTGGTGACGCCCGGAGCCAAAGTCT
ATGGCCCGCGCCTGTGAGAAGGCCGACTTTCGAGATGTCTGACTTCATCGTGGACACAAGGGATGCAGG
TTATGGTGGCATATCCTTGGCGGTGGAAGGCCAGCAAAGTGGACATCCAGACGGAGGACTGGAAGAT
GGCACCTGCAAAGTCTCCTACTTCCCTACCGTGCCTGGGGTTTATATCGTCTCCACAAATTCGCTGACG
AGCACGTGCCTGGGAGCCATTTACCGTGAAGATCAGTGGGGAGGGAAGAGTCAAAGAGAGCATCACCCG
CACCAGTCGGGCCCGTCCGTGGCCACTGTCCGGAGCATTGTGACCTGAACCTGAAAATCCCAGAAATC
AACAGCAGTGATATGTCCGCCACGTCAACAGCCCTCTGGCCGTGTGACTGAGGCAGAGATTGTGCCCA
TGGGGAAGAACTCACACTGCGTCCGGTTTGTGCCCCAGGAGATGGGCGTGACACGGTCAAGTCAAGTA
CCGTGGGCAGCACGTCAACGGCAGCCCTTCCAGTTCACCGTGGGGCCACTTGGTGAAGGAGGCGCCAC
AAGGTGCGGGCAGGAGCCCTGGCCTGGAGAGAGGAGAAGCGGGAGTCCCAGTGAAGTTCAGCATTGGA
CCCGGGAAGCAGGCGCTGGAGGCCTCTCCATCGCTGTTGAGGGCCCAAGTAAAGCCGAGATTACATTGGA
TGACCATAAAAAATGGGTCTGCGGTGTATCTTATATTGCCAAGAGCCTGGTAACACAGGATGTCACAT
AAGTTCAATGATGAGCACATCCCGAAAGCCCTACCTGGTCCGGTCAATCGCACCCCTCCGACGACGCCC
GCCGCTCACTGTTATGAGCCTCAGGAATCGGGATTAAGGTTAACCAGCCAGCATCCTTTGCTATAAG
GTTGAATGGCGAAAAGGCAAGATTGATGCAAAGGTGCACAGCCCTCTGGAGCCGTGGAGGAGTCCAC
GTGTCTGAGCTGGAGCCAGATAAGTATGCTGTTGCTTCCCTCATGAGAATGGTGTCCACACCATCG
ATGTCAAGTTCAATGGGAGCCACGTGGTTGGAAGCCCTTCAAAGTGCAGCTGGGGAGCCTGGACAAGC
GGGGAACCCTGCCCTGGTGTCCGCTATGGCACGGGACTCGAAGGGGGCACCACAGGTATCCAGTCGGAA
TTCTTTATTAACACCACCCGAGCAGGTCCAGGGACATTATCCGTACCATCGAAGGCCATCCAAGGTTA
AAATGGATTGCCAGGAAACACTGAAGGGTACAAAGTCAATGTACACCCCATGGCTCCTGGTAACTACCT
GATCAGCGTCAAATACGGTGGGCCAACACATCGTGGGCACTCCCTTCAAAGCCAAGGTGACAGGCCAG
CGTCTAGTTAGCCCTGGCTCAGCCAACGAGACCTCATCCATCCTGGTGGAGTCACTGACCAGGTCGTCTA
CAGAGACCTGCTATAGCGCCATTCCTCAAGGCATCCTCGGACGCCAGCAAGGTGACCTCTAAGGGGGCAGG
GCTCTCAAAGGCCTTTGTGGCCAGAAGAGTTCCTTCTGGTGGACTGCAGCAAAGCTGGCTCCAACATG
CTGCTGATCGGGTCCATGGGCCACCACCCCTGCGAGGAGGTCTCCATGAAGCATGTAGGCAACCAGC
AATACAACGTACATACGTGCTCAAGGAGAGGGCGATTATGTGCTGGCTGTGAAGTGGGGGGAGGAACA
CATCCCTGGCAGCCCTTTCATGTCACAGTGCCCT

ACGCGTACGCGGCCGCTCGAG - GFP Tag - GTTTAA

Protein Sequence:

>RG228710 representing NM_001164319
 Red=Cloning site Green=Tags(s)

```

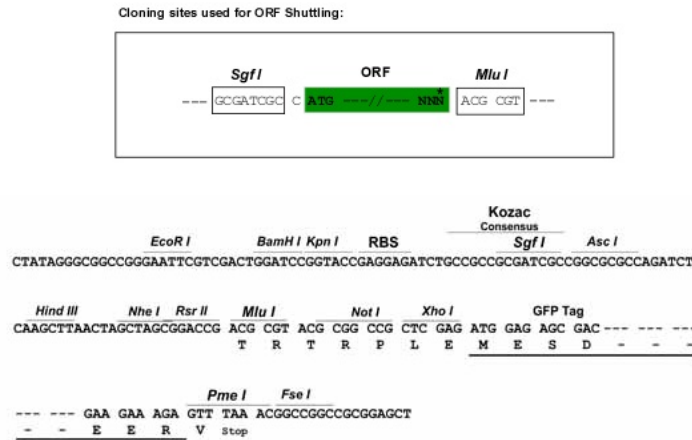
MPVTEKDLAEDAPWKKIQNTFTRWCNEHLKCVNKRIGNLQTDLS DGLRLIALLEVL SQRMYRKYHQRP
TFRQMLENVSVALEFLDRESIKLVSIDSKAIVDGNLKLILGLVWTLILHYSISMPVWEDEGDDDAKKQT
PKQRLLGWIQNKIPYLPITNFNQNWQDGKALGALV DSCAPGLCPDWESWDPQKPVDNAREAMQQADDWLG
VPQVITPEEIIHPDVDEHSMVTYLSQFPKAKLKP GAPLKPKNPKKARAYGRGIEPTGNMVKQPAKFTVD
TISAGQGDVMVFVEDPEGNKEEAQVTPDSDKNK TYSVEYLPKVTGLHKVTVLFAGQHISKSPFEVSVDKA
QGDASKVTA KGPGL EAVGNIANKPTYFDIYTAGAGVGDIGVEVEDPQGGKNTVELLVEDKGNQVYRCVYK P
MQPGPHVVKIFFAGDTIPKSPFVVQVGEACNPNA CRASGRGLQPKGVRIRETTDFKVDTKAAGSGELGVT
MKGPKGLEELVKQKDFLDGVYAFEYYPSTPGRYS IAITWGGHHIPKSPFEVQVGP EAGMQKVRWGPGLH
GGIVGRSADFVVESIGSEVGS LGFAIEGPSQAKIEYNDQNDGSCDVKYWPKEPGEYAVHIMCDEDEDIKDS
PYMAFIHPATGGYNPDLVRAYGPGL EKSGCIVNNLAEFTVDPKDAGKAPLKIFAQDGEGQRIDIQMKNRM
DGTYACSYTPVKAIKHTIAVWGGVNI PHSPYRVNIGQGSHPQKVKVFGPGVERSGLKANEPHTFTVDCT
EAGEGDVSVGIKCDARVLS EDEEDVDFDIH NANTFTVKYVPPAAGRYTIKVL FASQEIPASPFVRVKVD
PSHDASKVKAEGPGLSKAGVENGKPTHTFVYTKGAGKAPLNVQFNSPLPGDAVKDLDIIDNYDYSHTVKY
TPTQQGNMQVLVTYGGDPIPKSPFTVGVAAPLDL SKIKLNGLENRVEVGDQDEFV DTRGAGGQGLDVT
ILSPSRKVVV PCLVTPVTGRENSTAKFIPRE EGLYAVDVTYDGHVPVGPSPYTV EASLPPDPSKVKAHG PGL
EGGLVGKPAEFTIDTKGAGTGGLGLTVEGPCEAKIECSDNGDGTCSVSYLPTKPG EYFVNILFEEVHIPG
SPFKADIEMPFDPSKVVASGPGLEHGKVG EAGL SVDCSEAGPGALGLEAVSDSGTAEVSIQNNKDGTY
AVTYVPLTAGMYLTMKYGGELVPHF PARVKVEPAVDTSRIKVF GPGIEGKDFREATTDFTVDSRPLTQ
VGGDHIAHIANPSGASTE CFVTDNADGT YQVEYTPFEKGLHVVEV TYDDVPIPN SPFKVAVTEGCQPSR
VQAQGPGLKEAF TNKPNVFTV VTRGAGIGGLGITVEGPSESKINCRDNKDGSCSAEYIPFAPGDV DNIT
YGAH I PGSPFRVPVKDVDP SKVKIAGPGLGSGVRARVLQSFTVDSSKAGLAPLEVRVLGPRGLVEPVN
VVDNGDGTHVTYTPSQEGPYMVSVKYADEEIPRSPFKVKVLP TYDASKVTASG PGLSSYGPASLPVDF
AIDARDAGEGLLAVQITDQEGKPKRAIVHDNKDGT YAVTYIPDKTGRYMI GVTYGGDDIPLSPYRIRATQ
TGDASKCLATGPGI ASTVKTGEEVGFVVD AKTAGKGVCTV LTPDGTEAEADVIENEDGT YDIFYTAAK
PGTYVIYVRFGGVDIPNSPFTVMVTEEAYVPVSDM NGLGFKPFDLVIPFAVRKGEITGEVHMPSGKTATP
EIVDNKDGTVTVRYAPTEVGLHEMHIKYMGS H IPE SPLQFYVNYPN S GSVSAYG PGLVYG VANKTATFTI
VTEDAGEGGLDLAIEGPSKAEISCIDNKDGTCTV TYLPTLPGDYSILVKYNDKHIPGSPFTAKITD DSRR
CSQVKLGSAADFLLDISETDLSSLTASIKAPSGRDEPCLL KRLPNNHIGISFIPREVGEHLVSIKKNGNH
VANSPV SIMVVQSEIGDARRAKVYGRGLSEGRTFEMSDFIVDTRDAGYGGISLAVEGPSKVDIQTEDLED
GTCKVSYFPTVPGVYIVSTKFADEHVP GSPFTVKISGEGRVKESITRTRSAPS VATVGSICDLNLKIPEI
NSSDMSAHVTSPSGRVTEAEIVPMGKNSHCVRFPQEMGVHTVSVKYRGQHVTGSPFQFTVGPLGEGGAH
KVRAGGPGLERGEAGVPAEFSIWTREAGAGGLS IAVEGPSKAEITFDDHKN GSCGVSYIAQEPGN YEVSI
KFNDEH IPE SPYLVPVIAPSDDARRLTVMSLQESGLKVNQPASF AIRLNGAKGKIDAKVHSPSGAVEECH
VSELEPDKYAVRFIPHENGVHTIDVKFNGSHVVGSPFKVRVGE PGQAGNPALVSAYGTGLEGGTTGIQSE
FFINTTRAGPGLSVTIEGPSKVKMDCQETPEGYKVMYTPMAPGN YLISVKYGGPNHIVGSPFKAKVTGQ
RLVSPGSANETSSILVESVTRSSTETCYS AIPKASSDASKVT SKGAGLSKAFVGQKSSFLVDCSKAGSNM
LLIGVHGPTTPCEEVSMKHVGNQQYNVTVVVKERGDYVLAVKWGEEHIPGSPFHVTVP
  
```

TRTRPLE - GFP Tag - V

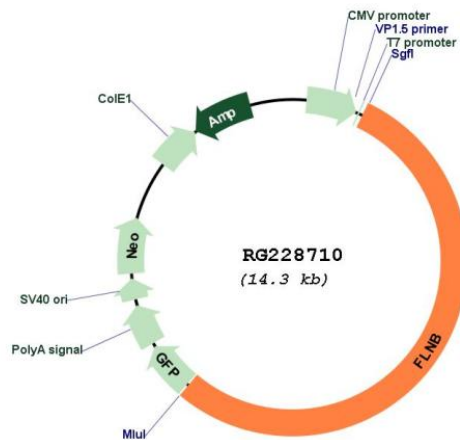
Restriction Sites:

Sgfl-Mlul

Cloning Scheme:



Plasmid Map:



ACCN: NM_001164319

ORF Size: 7734 bp

OTI Disclaimer: The molecular sequence of this clone aligns with the gene accession number as a point of reference only. However, individual transcript sequences of the same gene can differ through naturally occurring variations (e.g. polymorphisms), each with its own valid existence. This clone is substantially in agreement with the reference, but a complete review of all prevailing variants is recommended prior to use. [More info](#)

OTI Annotation:	This clone was engineered to express the complete ORF with an expression tag. Expression varies depending on the nature of the gene.
Components:	The ORF clone is ion-exchange column purified and shipped in a 2D barcoded Matrix tube containing 10ug of transfection-ready, dried plasmid DNA (reconstitute with 100 ul of water).
Reconstitution Method:	<ol style="list-style-type: none">1. Centrifuge at 5,000xg for 5min.2. Carefully open the tube and add 100ul of sterile water to dissolve the DNA.3. Close the tube and incubate for 10 minutes at room temperature.4. Briefly vortex the tube and then do a quick spin (less than 5000xg) to concentrate the liquid at the bottom.5. Store the suspended plasmid at -20°C. The DNA is stable for at least one year from date of shipping when stored at -20°C.
RefSeq:	<u>NM_001164319.2</u>
RefSeq Size:	9395 bp
RefSeq ORF:	7737 bp
Locus ID:	2317
UniProt ID:	<u>O75369</u>
Cytogenetics:	3p14.3
Protein Pathways:	Focal adhesion, MAPK signaling pathway
Gene Summary:	This gene encodes a member of the filamin family. The encoded protein interacts with glycoprotein Ib alpha as part of the process to repair vascular injuries. The platelet glycoprotein Ib complex includes glycoprotein Ib alpha, and it binds the actin cytoskeleton. Mutations in this gene have been found in several conditions: atelosteogenesis type 1 and type 3; boomerang dysplasia; autosomal dominant Larsen syndrome; and spondylocarpotarsal synostosis syndrome. Multiple alternatively spliced transcript variants that encode different protein isoforms have been described for this gene. [provided by RefSeq, Nov 2009]