

## Product datasheet for **RG228709**

### Versican (VCAN) (NM\_001164097) Human Tagged ORF Clone

#### Product data:

Product Type:	Expression Plasmids
Product Name:	Versican (VCAN) (NM_001164097) Human Tagged ORF Clone
Tag:	TurboGFP
Symbol:	VCAN
Synonyms:	CSPG2; ERVR; GHAP; PG-M; WGN; WGN1
Mammalian Cell Selection:	Neomycin
Vector:	pCMV6-AC-GFP (PS100010)
E. coli Selection:	Ampicillin (100 ug/mL)
ORF Nucleotide Sequence:	>RG228709 representing NM_001164097 Red=Cloning site Blue=ORF Green=Tags(s)

TTTTGTAATACGACTCACTATAGGGCGGCCGGAATTCGTCGACTGGATCCGGTACCGAGGAGATCTGCC  
GCC**CGATCGCC**

ATGTTCAATAATAAAGAGCATCTTATGGATGTGTTCAACCTTAATAGTAACCCATGCGCTACATAAAG  
TCAAAGTGGGAAAAGGCCACCGGTGAGGGCTCCCTCTCGAAAAGTCAGCCTACCTTGTCATTTTTT  
AACGATGCCTACTTTGCCACCCAGTTACAACACCAGTGAATTTCTCCGCATCAAATGGTCTAAGATTGAA  
GTGGACAAAAATGAAAAGATTTGAAAGAGACTACTGTCCTTGTGGCCAAAATGAAAATATCAAGATTG  
GTCAGGACTACAAAGGGAGAGTGTCTGTGCCACACATCCGAGGCTGTGGGCGATGCCTCCCTCACTGT  
GGTCAAGCTGCTGCAAGTGATGCGGGTCTTACCCTGTGACGTGATGACGGATTGAAGACACACAA  
GACACGGTGTCACTGACTGTGGATGGGGTTGTGTTTCACTACAGGGCGGCAACCAGCAGGTACACTGA  
ATTTTGAGGCTGCTCAGAAGGCTTGTGGACGTTGGGGCAGTCATAGCAACTCCAGAGCAGCTCTTTGC  
TGCCTATGAAGATGGATTTGAGCAGTGTGACGCAGGCTGGCTGGCTGATCAGACTGTCAGATATCCCATC  
CGGGCTCCAGAGTAGGCTGTTATGGAGATAAGATGGAAAGGCAGGAGTCAGGACTTATGGATCCGTT  
CTCCCCAGGAACTTACGATGTGATTGTTATGTGGATCATCTGGATGGTGTGTTCCACCTCACTGT  
CCCCAGTAAATCACCTTCGAGGAGGCTGCAAAAGAGTGTGAAAACCAGGATGCCAGGCTGGCAACAGTG  
GGGAACTCCAGGCGGCATGGAGGAACGGCTTTGACCAGTGCGATTACGGGTGGCTGTCGGATGCCAGCG  
TGCGCCACCTGTGACTGTGGCCAGGGCCAGTGTGGAGTGGTCTACTTGGGGTGAGAACCCTGTATCG  
TTTTGAGAACCAGACAGGCTTCCCTCCCTGATAGCAGATTTGATGCCTACTGCTTTAAACGTCGAATG  
AGTGATTTGAGTGAATTTGGTCAATAGATTCAGAATCTAAAGAAGATGAACCTTGTAGTGAAGAAA  
CAGATCCAGTGCATGATCTAATGGCTGAAATTTTACCTGAATCCCTGACATAATTGAAATAGACCTATA  
CCACAGTGAAGAAAATGAAGAAGAAGAAGAGTGTGCAATGCTACTGATGTGACAACCACCCATCT  
GTGCAGTACATAAATGGGAAGCATCTCGTTACCACTGTGCCAAGGACCCAGAAGCTGCAGAAGCTAGGC  
GTGGCCAGTTTGAAGTGTGACCTTCTCAGAATTTCTCGACAGCTCTGAAAGTGATACTCATCCATT  
TGTAATAGCCAAAACGGAATTGCTACTGCTGTGCAACCTAATGAATCTACAGAAAACACTGAGTCTCT



[View online >](#)

GAAGTTACATGGAAGCCTGAGACTTACCCTGAAACATCAGAACATTTTTTCAGGTGGTGAGCCTGATGTTT  
TCCCCACAGTCCCATTCCATGAGGAATTTGAAAGTGGAACAGCCAAAAAGGGGCAGAATCAGTCACAGA  
GAGAGATACTGAAGTTGGTCATCAGGCACATGAACATACTGAACCTGTATCTCTGTTTCTGAAGAGTCT  
TCAGGAGAGATTGCCATTGACCAAGAATCTCAGAAAAAGCCTTTGCAAGGGCTACAGAAGTAACATTTG  
GTGAAGAGGTAGAAAAAGTACTTCTGTACATACTCCACTATAGTTCCAAGTTCTGCATCAGCATA  
TGTTTTCAGAGGAAGAAGCAGTTACCCTAATAGGAAATCCTTGGCCAGATGACCTGTTGTCTACCAAAGAA  
AGCTGGGTAGAAGCAACTCCTAGACAAGTTGTAGAGCTCTCAGGGAGTTCTTCGATTCCAATTACAGAAG  
GCTCTGGAGAAGCAGAAGAAGATGAAGATAACAATGTTCCACATGGTAACCTGATTTATCACAGAGAAATAC  
TACTGATACACTATTACTTTAGACACTAGCAGGATAATCACAGAAAGCTTTTTTGGAGTTCTGCAACC  
ACCATTTATCCAGTTTCTGAACAACCTTCTGCAAAAAGTGGTGCCTACCAAGTTTGTAAAGTAAACAGACA  
CTTCTGAGTGGATTTCCAGTACCCTGTTGAGGAAAAGAAAAGGAAGGAGGAGGAGGAACTACAGGTAC  
GGCTTCTACATTTGAGGTATATTCATCTACACAGAGATCGGATCAATTAATTTTACCCTTTGAATTAGAA  
AGTCCAATGTAGCTACATCTAGTGATTCAGGTACCAGGAAAAGTTTTATGTCCTTGACAACACCAACAC  
AGTCTGAAAGGGAATGACAGATTCTACTCTGTCTTTACAGAAACAAATACATTAGAAAATTTGGGGC  
ACAGACCACTGAGCACAGCAGTATCCATCAACCTGGGGTTCAGGAAGGGCTGACCACTCTCCACGTAGT  
CCTGCCTCTGTCTTTATGGAGCAGGGCTCTGGAGAAGCTGCTGCCAGCCAGAAAACCACTGTTTCTT  
CATTTTTCATTAACGTAGAGTATGCAATTAAGCCGAAAAGGAAGTAGCTGGCACTTTGTCTCCGCATGT  
GAAAACACATTTCCACTGAGCCAACAGGACTGGTTTTGAGTACAGTAATGGACAGAGTAGTTGCTGAA  
AATATAACCCAAACATCCAGGAAATAGTGATTTAGAGCGATTAGGAGAACCAATTAAGGGCAGAAA  
TAAGGGGCTTTTCCACAGTTTTCTTTGGAGGAAGATTCAGTGGTGACTTTAGAGAATACTCAACAGT  
GTCTCATCCCATAGCAAAAAGAAACGGTAATGATGGAAGGCTCTGGAGATGCAGCATTAGGGACACC  
CAGACTTCACCATCTACAGTACCTACTTCACTTACATCAGTACATATCTGACTCAGAAGGACCCAGCA  
GCACCATTGGTCAGCACTTCAGCCTTCCCCTGGGAAGATTTACATCCTCAGCTGAGGGCTCAGGTGAGCA  
ACTGGTACAGTACAGCAGTCTGTTGTTCCAGTCTTCCAGTGTGTGCAAAAAGTTTTCTGGTACAGCT  
TCTCCATTATCGACGAAGGATTGGGAGAAGTGGTACTGTCAATGAAATTTGATAGAAGTCCACCATTT  
TACCAACAGCAGAAGTGAAGGTACGAAAGCTCCAGTAGAGAAGGAGGAAGTAAAGGTGAGTGGCACAGT  
TTCAACAAACTTTCCCAAACTATAGAGCCAGCCAAATTAAGTCTAGGCAAGAAGTCAACCCTGTAAAG  
CAAGAAATGAAAGTGAACAACATCAGAGGAACAAATTAAGAAGAAAAGTCAATTTGAATCCCCTCAA  
ACTCTCCTGCAACAGAACAAACAATCTTTGATTACAGACATTTACTGAAACTGAACTCAAACACAGAA  
TTATTCTGTACTAACAAAGAAAAGTACAGTATGATAAAGAAATGAAGGAGGAAGACACTTCTTTA  
GTTAACATGTCTACTCCAGATCCAGATGCAAAATGGCTTGAATCTTACACAACCTCCCTGAAGCTACTG  
AAAAGTCATTTTTTCTTAGCTACTGCATTAGTAACTGAATCTATACCAGCTGAACATGTAGTCACAGA  
TTCACCAATCAAAAAGGAAGAAAGTACAAAACATTTTCCGAAAGGCATGAGACCAACAATTAAGAGTCA  
GATACTGAGCTCTTATTCTCTGGACTGGGATCAGGAGAAGAAGTTTTACCTACTCTACCAACAGAGTCAG  
TGAATTTTACTGAAGTGGAAACAATCAATAACACATTATATCCCACACTTCTCAAGTGGAAAGTACCTC  
AAGTGACAAAATGAAGACTTTAACAGAATGGAATAATGTGGCAAAAAGATTTGGACCACTCGTATCTCAA  
ACAGACATCTTTGAAGGTAGTGGTCCAGTAAACAGCACAACATTAATAGAAAATTTAAGTACACTGGAG  
CAGAAGGACCCACGGTGGCACCTCTCCCTTCTCCACGGACATCGGACATCCTCAAAATCAGACTGTCAG  
GTGGGCAGAAGAAATCCAGACTAGTAGACCACAACCATAACTGAACAAGACTTAACAAGAAATTTCTCA  
ACAGCAGAAATTAACGAAACAACCACTCATCTACTGATTTTCTGGCTAGAGCTTATGGTTTTGAAATGG  
CCAAAGAATTTGTACATCAGCACCAAAACCATCTGACTTGATTTATGAACCTTCTGGAGAAGGATCTGG  
AGAAGTGGATATTGTTGATTCAATTTCACTTCTGCAACTACTCAGGCAACCAGACAAGAAAGCAGCACC  
ACATTTGTTTCTGATGGTCCCTGGAAAAACATCCTGAGGTGCCAAGCGCTAAAGCTGTTACTGCTGATG  
GATTTCCCAACAGTTTTCAGTGTGCTGCCTTCTCATTTCAGAGCAGAACAAAAGCTCCCCTGATCCAAC  
CACACTGTCAAAACAGTGTCAATGAGAGGTCCACAGACGGTAGTTTCCAAGACCGTTTCAGGGAATTC  
GAGGATTCACCTTAAAACCTAACAGAAAAAACCCACTGAAAAATATTATCATAGACCTGGACAAGAGG  
ACAAGGATTTAATATTGACAATTACAGAGAGTACCATCCTTGAATTTCTACTGAGCTGACATCGGATAA  
AAATACTATCATAGATATTGATCATACTAAACCTGTGTATGAAGACATTCTTGAATGCAACAGATATA  
GATACAGAGGTACCATCAGAACCACATGACAGTAAATGATGAAAAGTAAATGATGACAGCACTCAAGTTCAAG  
AGATCTATGAGGCAGCTGTCAACCTTTCTTAACTGAGGAAACATTTGAGGGCTCTGCTGATGTTCTGGC  
TAGCTACACTCAGGCAACACATGATGAATCAATGACTTATGAAGATAGAAGCCAACCTAGATCACATGGGC  
TTTCACTTCACAACCTGGGATCCCTGCTCCTAGCACAGAAACAGAATTAGACGTTTTACTTCCCACGGCAA

CATCCCTGCCAATTCCTCGTAAGTCTGCCACAGTTATTCCAGAGATTGAAGGAATAAAAGCTGAAGCAAA  
AGCCCTGGATGACATGTTTGAATCAAGCACTTTGTCTGATGGTCAAGCTATTGCAGACCAAAGTAAATA  
ATACCAACATTGGGCCAATTTGAAAGGACTCAGGAGGAGTATGAAGACAAAAACATGCTGGTCCTTCTT  
TTCAGCCAGAATTCTCTCAGGAGCTGAGGAGGCATTAGTAGACCATACTCCCTATCTAAGTATTGCTAC  
TACCCACCTTATGGATCAGAGTGAACAGAGGTGCCTGATGTGATGGAAGGATCCAATCCCCATATTAC  
ACTGATAACAACATTAGCAGTTTCAACATTTGCGAAGTTGTCTTCTCAGACACCATCATCTCCCCTACTA  
TCTACTCAGGCAGTGAAGCCTCTGGACACACAGAGATCCCCAGCCAGTGCCTCTGCCAGGAATAGACGT  
CGGCTCATCTGTAATGTCCCACAGGATTCTTTTAAAGGAAATTCATGTAATATTGAAGCGACTTTCAAA  
CCATCAAGTGAGGAATACCTTCACATAACTGAGCCTCCCTCTTTATCTCCTGACACAAAATTAGAACCTT  
CAGAAGATGATGGTAAACCTGAGTTATTAGAAGAAATGGAAGCTTCTCCACAGAACTTATTGCTGTGGA  
AGGAACTGAGATTCTCCAAGATTTCAAAAACAAACCGATGGTCAAGTTTCTGGAGAAGCAATCAAGATG  
TTTCCCACCATTAACACCTGAGGCTGGAAGTATTACAACCTGCCGATGAAATTGAATTAGAAGGTG  
CTACACAGTGGCCACACTCTACTTCTGCTTCTGCCACCTATGGGGTCGAGGCAGGTGTGGTGCCTGGCT  
AAGTCCACAGACTTCTGAGAGGCCACGCTTTCTTCTTCTCCAGAAATAAACCTGAAACTCAAGCAGCT  
TTAATCAGAGGCAGGATTCCACGATAGCAGCATCAGAACAGCAAGTGGCAGCGAGAATTCTTGATTCCA  
ATGATCAGGCAACAGTAAACCCTGTGGAATTTAATACTGAGGTTGCAACACCACCATTTTCCCTTCTGGA  
GACTTCTAATGAAACAGATTTCTGATTGGCATTAAATGAAGAGTCAAGTGAAGGCACGGCAATCTATTTA  
CCAGGACCTGATCGCTGCAAAATGAACCCGTGCCTTAACGGAGGCACCTGTTATCCTACTGAAACTTCT  
ACGTATGCACCTGTGTGCCAGGATACAGCGGAGACCAGTGTGAACCTGATTTTGTGATGATGCACTCTAA  
TCCCTGTCTGTAATGGAGCCACTTGTGTTGATGGTTTTAACACATTCAGGTGCCTCTGCCTCCAAGTTAT  
GTTGGTGCACCTTGTGAGCAAGATACCGAGACATGTGACTATGGCTGGCACAATTTCAAGGCAGTGC  
ACAAACTTTGCCCATCGACGCACATGGGATGCAGCTGAACGGGAATGCCGTCTGCAGGTTGCCATCT  
CACAAGCATCCTGTCTCACGAAGAACAATGTTTGTAAATCGTGTGGCCATGATTATCAGTGGATAGGC  
CTCAATGACAAGATGTTTGAGCATGACTTCCGTTGGACTGATGGCAGCACACTGCAATACGAGAATTGGA  
GACCCAACCAGCCAGACAGCTTCTTTTCTGCTGGAGAAGACTGTGTTGTAATCATTGGCATGAGAATGG  
CCAGTGAATGATGTTCCCTGCAATTACCATCTCACCTATACGTGCAAGAAAGGAACAGTCGCTTGCAGC  
CAGCCCCCTGTTGTAGAAAATGCCAAGACCTTTGGAAAGATGAAACCTCGTTATGAAATCAACTCCCTGA  
TTAGATACCAGTCAAAGATGGTTTCATTCAACGTCACCTTCCAACATCCGGTGCTTAGGAAATGGAAG  
ATGGGCTATACCTAAAATTACCTGCATGAACCCATCTGCATACCAAAGGACTTATTCTATGAAATACTTT  
AAAAATTCCTCATCAGCAAAGGACAATTAATAAATACATCCAACATGATCATCGTTGGAGCCGGAGGT  
GGCAGGAGTCGAGGCGC

ACGCGTACGCGGCCGCTCGAG – GFP Tag – GTTTAA

**Protein Sequence:** >RG228709 representing NM\_001164097  
 Red=Cloning site Green=Tags(s)

```

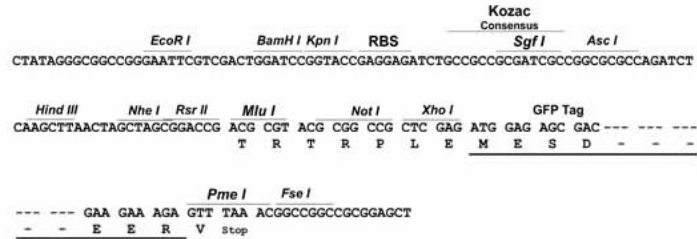
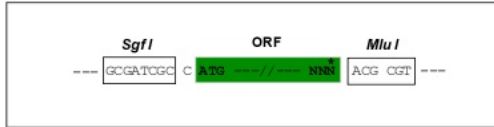
MFINKSILWMCSTLIVTHALHKVKVKGKSPVVRGSLSGKVSLPCHFSTMPPLPPSYNTSEFLRIKWSKIE
VDKNGKDLKETTTLVAQNGNIKIGQDYKGRVSVPTHEAVGDASLTVVKLLASDAGLYRCDVMYGIEDTQ
DTVSLTVDGVVFHYRAATSRYYTLNFEAAQKACLVDGAVIATPEQLFAAYEDGFEQCDAGWLADQTVRYPI
RAPRVGCGYDGMKGAGVRTYGFRRSPQETVDVYCVVDHLDGDVDFHLTVPSKFTFEEAAKECENQDARLATV
GELQAARWNGFDQCDYGLSDASVRHPVTVARAQCGGGLLGVRTLYRFENQTFGPPPSRFDAYCFKRRM
SDLVIGHPIIDSEKEDPCSEETDPVHDLMAEILPEFPDIEIDLHSENEEEEEECANATDVTTTSP
VQYINGKHLVTTVPKDPEAAEARRGQFESVAPSQNFSDSSESDTHPFVIAKTELSTAVQPNESTETTESL
EVTWKPETYPETSEHFGGEPDVFPTVPFHEEFESGTAKKGAESVTERDTEVGHQAHEHTEPVSLFPEES
SGEIAIDQESQKIAFARATEVTFGEEVEKSTSVTYTPTIVPSSASAYVEEEAVTLIGNPWPDDLSTKE
SWVEATPRQVVELSGSSSIPITEGSGEAEDEDTMFTMVDLSQRNTDTLITLDSRIITSEFFVPAT
TIYPVSEQPSAKVVPTKVFVSETDSEWISSTTVEEKKRKEEGTGTASTFEVYSSTQRSQDLILPFELE
SPNVATSSDSGRKSFMSLTTPQSEREMTDSTPVFTE TNTLENLGAQTEHSSIHQPGVQEGLTTLPRS
PASVFMQSGSGEAAADPETTTVSSFSLNVEYAIQAEKEVAGTLPSPHVFETTFSTEPTGLVLTVMDRVVAE
NITQTSREIIVISERLGEPNYGAERGFSTGFPLEEDFSGDFREYSTVSHPIAKEETVMMEGSGDAAFRDT
QTSPSTVPTSVHISHISDSEGPSSTMVSTSAFPWEEFTSSAEGSGEQLTVSSSVVPLVPSAVQKFSGTA
SSIIDDEGLGEVGTVNEIDRRSTILPTAEVEGKAPVEKEEVKVSQTVSTNFPQTIIEPAKLWSRQEVNPNR
QEIESETTSEEQIQEEKSFESPQNSPATEQTIQDSQTFTELEKTTDYSVLTTKKTYSDDKEMKEEDTSL
VNMSTPDPDANGLESYTTLPEATEKSHFFLATALVTESIPAHHVVDSPIKKEESTKHFKGMRPTIQES
DTELLFSGLGSGEVLPPTLPTESVNFTEVEQINNTLYPHTSQVESTSSDKIEDFNRMENVAKEVGPLVSQ
TDIFEGSGSVTSTLIEILSDTGAEGPTVAPLPFSTDIGHQPQNQTVRWAEEIQTSRPTITEQDSNKNS
TAEINETTSSSTDFLARAYGFEMAKFVTSAPKPSDLYEPESGEGSGEVDIVDSFHTSATTQATRQESST
TFVSDGSLKHPVPSAKAVTADGFPTVSVMLPLHSEQNKSSPDPTSTLNTVSYERSTDGFSQDRFREF
EDSTLKPNRKPTENIIDLKEDKDLILITESTILEILPELTSKNTIIDIDHTKPVYEDILGMQTDI
DTEVPSEPHDSNDESNDSTQVQEIYEAANVLSLTEETFEGSADVLASYTQATHDESMTYEDRSQLDHMG
FHFTTGIPAPSTETELDVLLPTATSLPIPRKSATVIPIEGIKAEAKALDDMFESSTLSDGQAIADQSEI
IPTLGQFERTQEEYEDKKHAGPSFQPEFSSGAEALVDHTPYLSIATTHLMDQSVTEVPDVMESNPPYY
TDTTLAVSTFAKLSSTPSSPLTIYSGSEASGHEIPQPSALPGIDVGSSVMSPQDSFKEIHNIEATFK
PSSEYHLHITEPPSLSPDTKLEPSEDDGKPELLEEMEASPTELIAVEGTEILQDFQNKTDGQVSGEAIKM
FPTIKTPEAGTVITTADEIELEGATQWPHSTSASATYGVAGVVPWLSPTSERPTLSSSPEINPETQAA
LIRGQDSTIAASEQQVAARILDSNDQATVNPVEFNTEVATPPFSLLETNETDFLIGINEESVEGTAIYL
PGPDRCKMNPCLNGGTCYPTETSIVYCTCVPGYSGDQCELDQFDECHSNPCRNGATCVDFGNTFRCLCLPSY
VGALCEQDTECDYGWHKFQGCYKYFAHRRTWDAARECRLQGAHLTSLSHEEQMFVNRVGHYDQWIG
LNDKMFHDFRWDGSLQYENWRPNQPSFFSAGEDCVVIIWHENGQWQNDVPCNYHLTYTCKKGTVACG
QPPVVENAKTFGKMKPRYEINSLIRYHCKDGFIRHLPTIRCLGNRWAIPKITCMNPSAYQRTYSMKYF
KNSSSAKDNSINTSKHHRWSRRWQESRR
  
```

TRTRPLE - GFP Tag - V

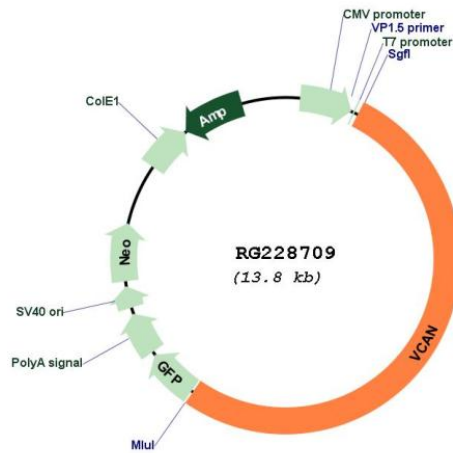
**Restriction Sites:** Sgfl-MluI

Cloning Scheme:

Cloning sites used for ORF Shutting:



Plasmid Map:



ACCN:

NM\_001164097

<b>ORF Size:</b>	7227 bp
<b>OTI Disclaimer:</b>	The molecular sequence of this clone aligns with the gene accession number as a point of reference only. However, individual transcript sequences of the same gene can differ through naturally occurring variations (e.g. polymorphisms), each with its own valid existence. This clone is substantially in agreement with the reference, but a complete review of all prevailing variants is recommended prior to use. <a href="#">More info</a>
<b>OTI Annotation:</b>	This clone was engineered to express the complete ORF with an expression tag. Expression varies depending on the nature of the gene.
<b>Components:</b>	The ORF clone is ion-exchange column purified and shipped in a 2D barcoded Matrix tube containing 10ug of transfection-ready, dried plasmid DNA (reconstitute with 100 ul of water).
<b>Reconstitution Method:</b>	<ol style="list-style-type: none"><li>1. Centrifuge at 5,000xg for 5min.</li><li>2. Carefully open the tube and add 100ul of sterile water to dissolve the DNA.</li><li>3. Close the tube and incubate for 10 minutes at room temperature.</li><li>4. Briefly vortex the tube and then do a quick spin (less than 5000xg) to concentrate the liquid at the bottom.</li><li>5. Store the suspended plasmid at -20°C. The DNA is stable for at least one year from date of shipping when stored at -20°C.</li></ol>
<b>RefSeq:</b>	<a href="#">NM_001164097.1</a> , <a href="#">NP_001157569.1</a>
<b>RefSeq Size:</b>	9455 bp
<b>RefSeq ORF:</b>	7230 bp
<b>Locus ID:</b>	1462
<b>UniProt ID:</b>	<a href="#">P13611</a>
<b>Cytogenetics:</b>	5q14.2-q14.3
<b>Protein Pathways:</b>	Cell adhesion molecules (CAMs)
<b>Gene Summary:</b>	This gene is a member of the aggrecan/versican proteoglycan family. The protein encoded is a large chondroitin sulfate proteoglycan and is a major component of the extracellular matrix. This protein is involved in cell adhesion, proliferation, migration and angiogenesis and plays a central role in tissue morphogenesis and maintenance. Mutations in this gene are the cause of Wagner syndrome type 1. Multiple transcript variants encoding different isoforms have been found for this gene. [provided by RefSeq, Aug 2009]