

## Product datasheet for **RG228706**

### SCN1A (NM\_001165964) Human Tagged ORF Clone

#### Product data:

Product Type:	Expression Plasmids
Product Name:	SCN1A (NM_001165964) Human Tagged ORF Clone
Tag:	TurboGFP
Symbol:	SCN1A
Synonyms:	DEE6; DEE6A; DEE6B; DRVT; EIEE6; FEB3; FEB3A; FHM3; GEFSP2; HBSCI; NAC1; Nav1.1; SCN1; SMEI
Mammalian Cell Selection:	Neomycin
Vector:	pCMV6-AC-GFP (PS100010)
E. coli Selection:	Ampicillin (100 ug/mL)
ORF Nucleotide Sequence:	>RG228706 representing NM_001165964 Red=Cloning site Blue=ORF Green=Tags(s)

TTTTGTAATACGACTCACTATAGGGCGGCCGGAATTCGTCGACTGGATCCGGTACCGAGGAGATCTGCC  
GCC**CGATCGCC**

ATGGAGCAAACAGTGCTTGTACCACCAGGACCTGACAGCTTCAACTTCTTACCAGAGAATCTCTTGCGG  
CTATTGAAAGACGCATTGCAGAAGAAAAGGCAAAGAATCCCAAACCAGACAAAAAGATGACGACGAAAA  
TGGCCCAAAGCCAAATAGTGACTTGAAGCTGGAAGAACCTTCCATTTATTTATGGAGACATTCCTCCA  
GAGATGGTGTGAGAGCCCTGGAGGACCTGACCCCTACTATATCAATAAGAAAACCTTTATAGTATTGA  
ATAAAGGGAAGGCCATCTCCGGTTCAGTGCCACCTCTGCCCTGTACATTTAACTCCCTCAATCCTCT  
TAGGAAAATAGCTATTAAGATTTTGGTACATTCATTATTCAGCATGCTAATTATGTGCACTATTTTGACA  
AACTGTGTGTTTATGACAATGAGTAACCCTCCTGATTGGACAAAGAATGTAGAATACACCTTCACAGGAA  
TATATACTTTTGAATCACTTATAAAAAATTATTGCAAGGGGATTCTGTTTGAAGATTTTACTTTCCTTCG  
GGATCCATGGAACCTGGCTCGATTTCACTGTCAATTACATTTGCGTACGTCACAGATTTGTGGACCTGGGC  
AATGTCTCGGCATTGAGAACATTCAGAGTTCTCCGAGCATTGAAGACGATTTTCAGTCATTCCAGGCCTGA  
AAACCATTTGTTGGAGCCCTGATCCAGTCTGTGAAGAAGCTCTCAGATGTAATGATCCTGACTGTGTTCTG  
TCTGAGCGTATTTGCTCTAATTTGGGCTGACAGCTGTTTATGGGCAACCTGAGGAATAAATGTATACAATGG  
CCTCCCACCAATGCTTCCCTGGAGGAACATAGTATAGAAAAGAATATAACTGTGAATTATAATGGTACAC  
TTATAAATGAAACTGTCTTTGAGTTTGACTGGAAGTCAATATTTCAAGATTCAAGATATCATTATTTCT  
GGAGGGTTTTTTAGATGCACTACTATGTGAAAATAGCTCTGATGCAGGCCAATGTCCAGAGGGATATAG  
TGTGTGAAAGCTGGTAGAAATCCCAATTATGGCTACACAAGCTTTGATACCTTCAGTTGGGCTTTTTTGT  
CCTTGTTTCGACTAATGACTCAGGACTTCTGGGAAAATCTTTATCAACTGACATTACGTGCTGCTGGGAA  
AACGTACATGATTTTTTTGATTGGTCATTTTCTGGGCTATTCTACCTAATAAATTTGATCCTGGCT  
GTGGTGGCCATGGCCTACGAGGAACAGAATCAGGCCACCTTGAAGAAGCAGAACAGAAAGAGGCCGAAT  
TTCAGCAGATGATTGAACAGCTTAAAAAGCAACAGGAGGCAGCTCAGCAGGCAGCAACGGCAACTGCCTC



[View online »](#)

AGAACATTCCAGAGAGCCAGTGCAGCAGGCAGGCTCTCAGACAGCTCATCTGAAGCCTCTAAGTTGAGT  
 TCCAAGAGTGCTAAGGAAAGAAGAAATCGGAGGAAGAAAAGAAAACAGAAAGAGCAGTCTGGTGGGGAAG  
 AGAAAGATGAGGATGAATTCAAAAATCTGAATCTGAGGACAGCATCAGGAGGAAAGGTTTTCGTTCTC  
 CATTGAAGGGAACCGATTGACATATGAAAAGAGGTACTCTCCCCACACCAGTCTTTGTTGAGCATCCGT  
 GGCTCCCTATTTTCACCAAGGCGAAATAGCAGAACAAGCCTTTTCAGCTTTAGAGGGCGAGCAAAGGATG  
 TGGGATCTGAGAACGACTTCGCAGATGATGAGCACAGCACCTTTGAGGATAACGAGAGCCGTAGAGATTG  
 CTTGTTTTGCCCCGACGACCGAGAGAGACGCAACAGCAACCTGAGTCAGACCAGTAGGTCATCCCGG  
 ATGCTGGCAGTGTTCAGCGAATGGGAAGATGCACAGCACTGTGGATTGCAATGGTGTGGTTCCCTTGG  
 GAACAACCACTGAAACTGAAATGAGAAAAGAGAAGTCAAGTTCTTTCCACGTTTTCCATGGACTTTCTAGA  
 AGATCCTTCCCAAAGGCAACGAGCAATGAGTATAGCCAGCATTCTAACAAATACAGTAGAAGAAGTTGAA  
 GAATCCAGGCAGAAATGCCACCCTGTTGGTATAAATTTTCCAACATATTCTTAATCTGGGACTGTTCTC  
 CATATTGGTTAAAAGTGAACATGTTGTCAACCTGTTGTGATGGACCCATTTGTTGACCTGGCCATCAC  
 CATCTGTATTGTCTTAAATACTTTTTCATGGCCATGGAGCACTATCCAATGACGGACCATTTCAATAAT  
 GTGCTTACAGTAGGAACTTGGTTTTCACTGGGATCTTTACAGCAGAAAATGTTTCTGAAAATTTATGCCA  
 TGGATCCTTACTATTATTTCCAAGAAGGCTGGAATATCTTTGACGTTTTATTGTGACGCTTAGCCTGGT  
 AGAACTTGGACTCGCAATGTGGAAGGATTATCTGTTCTCCGTTCAATTCGATTGCTGCGAGTTTTCAAG  
 TTGGCAAAATCTTGGCCAACGTTAAATATGCTAATAAAGATCATCGGCAATTCCTGTTGGGGCTCTGGGAA  
 ATTTAACCTCGTCTTGGCCATCATCGTCTTATTTTTGCCGTGGTGGCATGCAGCTCTTTGGTAAAAG  
 CTACAAAGATTGTGTCTGCAAGATCGCCAGTATTGTCAACTCCCACGCTGGCACATGAATGACTTCTTC  
 CACTCCTTCTGATTGTGTTCCGCGTGTGTGGGGAGTGGATAGAGACCATGTGGGACTGTATGGAGG  
 TTGCTGGTCAAGCCATGTGCCTTACTGTCTTATGATGGTCAATGGTATTGGAACCTAGTGGTCTGAA  
 TCTCTTTCTGGCCTTGTCTGAGCTCATTAGTGCAGACAACCTTGCAGCCACTGATGATGATAATGAA  
 ATGAATAATCTCCAAATGTCTGGATAGGATGCACAAAGGAGTAGCTTATGTGAAAAGAAAAATATAG  
 AATTTATTCAACAGTCCCTTCAATAGGAAAACAAAAGATTTTAGATGAAATTAACCACTTGATGATCTAAA  
 CAACAAGAAAGACAGTTGTATGTCCAATCATACAGCAGAAATTGGGAAAGATCTTACTATCTTAAAGAT  
 GTAATGGAACACTACAAGTGGTATAGGAACTGGCAGCAGTGTGAAAAATACATTATTGATGAAAAGTATT  
 ACATGTCAATCATAAACAACCCAGTCTTACTGTGACTGTACCAATTGCTGTAGGAGAATCTGACTTTGA  
 AAATTTAAACACGGAAGACTTTAGTAGTGAATCGGATCTGGAAGAAAGCAAGAGAAACTGAATGAAAGC  
 AGTAGCTCATCAGAAGGTAGCACTGTGGACATCGGCGCACCTGTAGAAGAACAGCCCGTAGTGGAACTG  
 AAGAACTCTTGAACCAGAAGCTTGTTCCTGAAAGGCTGTGTACAAAGATTCAAGTGTGTCAAATCAA  
 TGTGGAAGAAGGCAGAGGAAAACAAATGGTGAACCTGAGAAGGACGTGTTCCGAATAGTGAACATAAC  
 TGGTTTTGAGACCTTCAATGTTTTCATGATTCTCCTTAGTAGTGGTGTCTGGCATTGGAAGATATATATA  
 TTGATCAGCGAAAGACGATTAAGACGATGTTGGAATATGCTGACAAGGTTTTCACTTACATTTTCTTCT  
 GGAAATGCTTCTAAAATGGGTGGCATAAGGCTATCAAACATATTTACCAATGCCTGGTGTGGCTGGAC  
 TTCTTAATTGTTGATGTTTCAATGGTCACTTAAACAGCAAATGCCTGGGTTACTCAGAAGTTGGAGCCA  
 TCAAACTCTCAGGACACTAAGAGCTCTGAGACCTTAAGAGCCTTATCTCGATTGAAGGGATGAGGGT  
 GGTGTGAATGCCCTTTTAGGAGCAATCCATCCATCATGAATGTGCTTCTGGTTGTCTTATATCTGG  
 CTAATTTTCAGCATCATGGGCGTAAATTTGTTTGTGGCAAATTTACCCTGTATTAACACCACAACCTG  
 GTGACAGGTTTGACATCGAAGACGTGAATAATCATACTGATTGCCTAAAACCTAATAGAAAAGAAATGAGAC  
 TGCTCGATGGA AAAATGTGAAAGTAAACTTTGATAATGTAGGATTTGGGTATCTCTCTTTGCTTCAAGTT  
 GCCACATTCAAAGGATGGATGGATATAATGTATGCAGCAGTTGATTCCAGAAAATGTGAACTCCAGCCTA  
 AGTATGAAGAAAGTCTGTACATGTATCTTACTTTGTTATTTTTCATCATCTTTGGGTCTTCTTACCTT  
 GAACCTGTTTATTGGTGTATCATAGATAATTTCAACCAGCAGAAAAAGAAAGTTGGAGGTCAAGACATC  
 TTTATGACAGAAGAACAGAAGAAATACTATAATGCAATGAAAAATTAGGATCGAAAAAACCGCAAAAGC  
 CTATACCTCGACCAGGAAACAAATTTCAAGGAATGGTCTTTGACTTCGTAACCAGACAAGTTTTTGACAT  
 AAGCATCATGATTCTCATCTGTCTTAAACATGGTCAACATGATGGTGGAAACAGATGACCAGAGTGAATAT  
 GTGACTACCATTTTGTACGCATCAATCTGGTGTTCATTGTGCTATTTACTGGAGAGTGTGACTGAAAC  
 TCATCTCTACGCCATTATTATTTTACCATTGGATGGAATATTTTGTATTTGGTGTGCTATTCTCTC  
 CATTGTAGGTATGTTTCTTCCGAGCTGATAGAAAAGTATTTCTGTCCCTACCCTGTTCCGAGTGATC  
 CGTCTTGCTAGGATTGGCCGAATCCTACGTCTGATCAAAGGAGCAAAGGGGATCCGCACGCTGCTTTTG  
 CTTTGATGATGTCCCTTCTGCTGTTGTTAACATCGGCCCTCTACTCTTCTAGTCATGTTTCACTACGC  
 CATCTTTGGGATGTCAACTTTGGCTATGTTAAGAGGGAAGTTGGGATCGATGACATGTTCAACTTTGAG

ACCTTTGGCAACAGCATGATCTGCCTATTCCAATTACAACCTCTGCTGGCTGGGATGGATTGCTAGCAC  
 CCATTCTCAACAGTAAGCCACCCGACTGTGACCCTAATAAAGTTAACCTGGAAGCTCAGTTAAGGGAGA  
 CTGTGGGAACCCATCTGTTGGAATTTCTTTTTGTGAGTTACATCATCATATCCTTCTGGTTGTGGT  
 AACATGTACATCGCGGCATCCTGGAGAAGTTCAGTGTGCTACTGAAGAAAGTGCAGAGCCTCTGAGTG  
 AGGATGACTTTGAGATGTTCTATGAGGTTTGGGAGAAGTTGATCCCGATGCAACTCAGTTCATGGAATT  
 TGAATAATATCTCAGTTGAGCTGCGCTTGAACCGCCTCTCAATCTGCCACAACCAACAACTCCAG  
 CTCATTGCCATGGATTTGCCATGGTGGTGGTACCAGGATCCACTGTCTTGATATCTTATTTGCTTTTA  
 CAAAGCGGTTCTAGGAGAGAGTGGAGAGATGGATGCTCTACGAATACAGATGGAAGAGCGATTTCATGGC  
 TTCCAATCCTTCCAAGGTCTCTATCAGCCAATCACTACTACTTTAAAACGAAAAACAAGAGGAAGTATCT  
 GCTGTCATTATTACAGCGTCTTACAGACGCCACCTTTAAAGCGAACTGTAACAAGCTTCTTTACGT  
 ACAATAAAAAACAAATCAAAGGTGGGGCTAATCTTCTTATAAAAGAAGACATGATAATTGACAGAATAAA  
 TGAAACTCTATTACAGAAAAACTGATCTGACCATGTCCACTGCAGCTTGCCACCTTCTATGACCGG  
 GTGACAAAGCCAATTGTGAAAAACATGAGCAAGAAGGCAAGATGAAAAAGCCAAGGGAAA

ACGCGTACGCGGCCGCTCGAG - GFP Tag - GTTTAA

**Protein Sequence:**

>RG228706 representing NM\_001165964  
 Red=Cloning site Green=Tags(s)

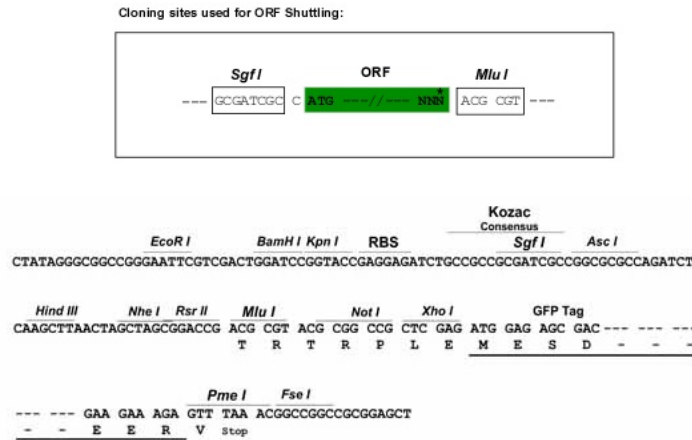
MEQTVLVPPGPDFNFRTRESLAAIERIAEAKAKNPKPKDKDDDENGPKPNSDLEAGKNLPIFYGDIPP  
 EMVSEPLEDLDPYYINKKTFIVLNKGKAIKFRFSATSALYILTPFNPLRKAIAIKILVHSLFSLMIMCTILT  
 NCVFMTMSNPPDWTKNVEYFTGIYTFESLIKIARGFCLEDFTLRDPWNWLDFTVITFAVYVTEFVDLG  
 NVSALRTRFVLRALKTISVIPGLKTIVGALIQSVKKSVMILTVFCLSVFALIGLQLFMGNLRNKKCIQW  
 PPTNASLEEHSIEKNITVNYNGTLINETVFEFDWKSIIQDSRYHYFLEGLDALLCGNSSDAGQCPGEGY  
 CVKAGRNPNGYTSFDTFSWAFSLFRLMTQDFWENLYQLTLRAAGKTYMIFVVLVIFLGSFYLINLILA  
 VVAMAYEEQNQATLEAEAEQKAEFQQMIEQLKKQEEAAQAATATASEHSREPSAAGRLSDSSSEASKLS  
 SKSAKERRNRKRKQKEQSGGEEKDEDEFQKSESEDSIRKGRFRFSIEGNRLTYEKRYSSPHQSLLSIR  
 GSLFSPRRNSRSLFSFRGRAKDVGSENFADDEHSTFEDNESRRDSLFPVRRHGERRNSNLQTSRSSL  
 MLAVFPANGKMHSTVDCNGVVS LGTTTEMRKRSSSFHVSMDFLEDPSQRQRAMSIASILTNTVEELE  
 ESRQKCPWCYKFSNIFLIWDCSPYWLKVKHVNLVMDPFDLAIITICIVLNTLFMAMEHYPMTHDFNN  
 VLTVGNLVFTGIFTAEMFLKIIAMDPIYFQEGWNI FDGFIVTL SLVELGLANVEGLSVLRSFRLLRVFK  
 LAKSWPTLNMLIKIIGNSV GALGNLTLVLAIVFIFAVVGMQLFGKSYKDCVCKIASDCQLPRWHMNDFF  
 HSFLIVFRVLCGEWIETMDCMEVAGQAMCLTVFMMVMVIGNLVVLNLFALLLLSSFSADNLAATDDNE  
 MNLQIAVDRMHKGVAYVKRIYEFIQQS FIRKQKILDEIKPLDDLNNKSDSCMSNHTAEIGKDL DYLDK  
 VNGTTSIGTGSSEVEKYI IDESDYMSFINNPSLTVTVPIAVGESDFENLNTEDFSSESDLEESKEKLNES  
 SSSSEGSTVDIGAPVEEQPVVEPEETLEPEACFTEGCVQRKCCQINVEEGRGKQWNLRRTCFRIVEHN  
 WFETTFIVFMILLSSGALAFEDIYDQRKTIKTMLEYADKVFTYIFILEMLLKWVAYGYQTYFTNAWCWLD  
 FLIVDVSLSLTANALGYSELGAIKSLRTRLRALRPLRALSRFEGMRVVVNALLGAI PSIMNVLLVCLIFW  
 LIFSIMGVNLFAGKFYHCINTTTGDRFDIEDVNNHTDCLKLIERNETARWKNVKNVFNDFNVGFGYLSLLQV  
 ATFKGWM DIMYAAVDSRNVELQPKYEESLYMYLYFVIF IIFGSFFTLNLFIGVIIDNFNQKKKFGGQDI  
 FMTEEQKYYNAMKLGSKPKQPIPRPGNKFGQMVDFVTRQVFDISIMILICLNMVTMMVETDDQSEY  
 VTTILSRINLVFIVLFTGECVLKLSLRHYYFTIGWNIFDFVVVILSIVGMFLAELIEKYFVSPTLFRVI  
 RLARIGRILRLIKGAKGIRTLFALMMSLPALFNIGLLLFLVMFIYAIFGMSNFAYVKREVGIDDMFNFE  
 TFGNSMICLFQITTSAGWDGLLAPILNSKPPDCPNKVNPGSSVKGDCGNPSVGIFFVSYIIISFLVVV  
 NMYIAVILENFSVATEESAEPLEDDFEMFYEVWEKFDPDATQFMEFEKLSQFAAALEPPLNLPQPNKQ  
 LIAMDLPMSVSGDRIHCLDILFAFTKRVLGESGEMDALRIQMEERFMASNP SKVSYQPIITTLKRKQEEVS  
 AVIIQRAYRRHLLKRTVKQASF TYNKNIKGGANLLIKEDMIIDRINENSITEKTDLTMSTAACPPSYDR  
 VTKPIVEKHEQEGKDEKAKGK

TRTRPLE - GFP Tag - V

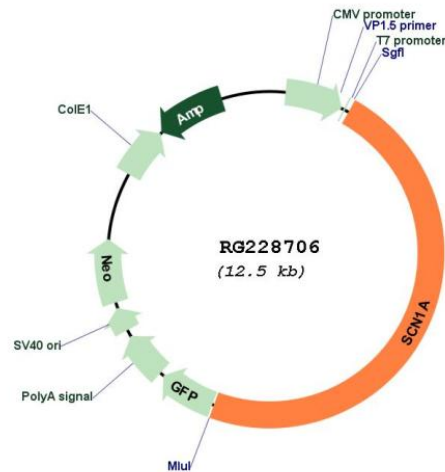
**Restriction Sites:**

Sgfl-MluI

Cloning Scheme:



Plasmid Map:



ACCN: NM\_001165964

ORF Size: 5943 bp

OTI Disclaimer: The molecular sequence of this clone aligns with the gene accession number as a point of reference only. However, individual transcript sequences of the same gene can differ through naturally occurring variations (e.g. polymorphisms), each with its own valid existence. This clone is substantially in agreement with the reference, but a complete review of all prevailing variants is recommended prior to use. [More info](#)

OTI Annotation: This clone was engineered to express the complete ORF with an expression tag. Expression varies depending on the nature of the gene.

<b>Components:</b>	The ORF clone is ion-exchange column purified and shipped in a 2D barcoded Matrix tube containing 10ug of transfection-ready, dried plasmid DNA (reconstitute with 100 ul of water).
<b>Reconstitution Method:</b>	<ol style="list-style-type: none"><li>1. Centrifuge at 5,000xg for 5min.</li><li>2. Carefully open the tube and add 100ul of sterile water to dissolve the DNA.</li><li>3. Close the tube and incubate for 10 minutes at room temperature.</li><li>4. Briefly vortex the tube and then do a quick spin (less than 5000xg) to concentrate the liquid at the bottom.</li><li>5. Store the suspended plasmid at -20°C. The DNA is stable for at least one year from date of shipping when stored at -20°C.</li></ol>
<b>RefSeq:</b>	<a href="#">NM_001165964.3</a>
<b>RefSeq Size:</b>	8049 bp
<b>RefSeq ORF:</b>	5946 bp
<b>Locus ID:</b>	6323
<b>UniProt ID:</b>	<a href="#">P35498</a>
<b>Cytogenetics:</b>	2q24.3
<b>Protein Families:</b>	Druggable Genome, Transmembrane
<b>Gene Summary:</b>	<p>Voltage-dependent sodium channels are heteromeric complexes that regulate sodium exchange between intracellular and extracellular spaces and are essential for the generation and propagation of action potentials in muscle cells and neurons. Each sodium channel is composed of a large pore-forming, glycosylated alpha subunit and two smaller beta subunits. This gene encodes a sodium channel alpha subunit, which has four homologous domains, each of which contains six transmembrane regions. Allelic variants of this gene are associated with generalized epilepsy with febrile seizures and epileptic encephalopathy. Alternative splicing results in multiple transcript variants. The RefSeq Project has decided to create four representative RefSeq records. Three of the transcript variants are supported by experimental evidence and the fourth contains alternate 5' untranslated exons, the exact combination of which have not been experimentally confirmed for the full-length transcript. [provided by RefSeq, Oct 2015]</p>