

Product datasheet for **RG228700**

PLXNB3 (NM_001163257) Human Tagged ORF Clone

Product data:

Product Type: Expression Plasmids
Product Name: PLXNB3 (NM_001163257) Human Tagged ORF Clone
Tag: TurboGFP
Symbol: PLXNB3
Synonyms: PLEXB3; PLEXR; PLXN6
Mammalian Cell Selection: Neomycin
Vector: pCMV6-AC-GFP (PS100010)
E. coli Selection: Ampicillin (100 ug/mL)
ORF Nucleotide Sequence: >RG228700 representing NM_001163257
 Red=Cloning site Blue=ORF Green=Tags(s)

TTTTGTAATACGACTCACTATAGGGCGGCCGGAATTCGTCGACTGGATCCGGTACCGAGGAGATCTGCC
 GCC**CGATCGCC**

ATGGAGCTCACCCCTGCCTCTTCGCTGACTTGCTCCTTGCTCAGCCCGGGCTGCCTGGCTCTTCCCCC
 AGCTGCGGAGGGTTCTCCTTGCAGCCGGCCCTGGCTGCCAAGGCCCGGTGATGGCTCGCTGGCTCC
 CTTGGCCTCTGCCTCCTCCTGTGCTGTGTCCACCACCCTGCCCCTTGACAGGGGCCATCGCTTC
 TCCGCACCTAATACCACTCTCAACCACTGGCACTGGCACCTGGCCGAGGCACACTCTATGTCGGCGCAG
 TGAACCGCCTCTCCAGCTCAGCCCGAGCTGCAGCTCGAGGCCGTGGCTGTCAGTGGCCCTGTAATCGA
 CAGCCCTGACTGCGTGCCCTTCCGTGACCCAGCCGAGTGCCACAGGCCAGCTCACTGACAATGCCAAC
 CAGCTGCTGCTGGTGAGCAGCCGCGCCAGGAGCTGGTGGCTGCGGGCAGGTGCGGCAGGGCGTGTGTG
 AGACACGGCGCCTTGGGGATGTGGCCGAGGTGCTGTACCAGGCTGAGGACCTGGTGACGGGCAGTTTGT
 GGCTGCCAATACCCCGGAGTGGCAACGGTGGGGCTGGTGGTGCCTTGGCCGGCCGGGACCTCTGCTT
 GTGGCCAGAGGCTGGCGGGCAAGCTGTGCGCAGGGGTGCCACCCTGGCCATCCGCCAGCTGGCCGGGT
 CTCAGCCCTTCTCCAGCAGGGCCTGGGCCGCTGGTGGTGGGCGACTTCTCCGACTACAACAACAGCTA
 CGTCGGGGCCTTGGCGACGCCGCTCCGCCTACTTCGTGTTCCGCCCGCGGGGCCCGGGCCAGGCT
 GAGTACCGCTCTACGTGGCCCGCTGCTGCTGGGGACACCAACCTGTACTCCTACGTGGAGGTCCCCC
 TCGCCTGCCAGGGCCAGGGCCTCATCCAGGCCGCTTCTTGGCCGGGCACCTTGCTAGGGGTGTTTGC
 CGCGGGCCCAAGGGCACCCAGGCGCGCTCTGTGCCTTCCCATGGTGGAGCTGGGTGCCAGCATGGAG
 CAGGCCCGGAGACTCTGTACACGGCGGGCGGGGCCAGCGGCGCAGAGGAAGCCACCGTGGAGT
 ACGGCGTCACGTCGCTGCGTACCCTGCCCTTATTCCCGGAGTCGTACCCTGTGGCGACGAGCA
 CACCCCGAGCCCATTTGCTGGCCGCCAGCCCTGGAGTCCAGCCTCTGCTGAAGCTCGGGCAGCCGGTC
 AGCGCCGTGGCAGCTCTCCAGGCAGATGGGCACATGATAGCCTTCTGGGGACACCCAGGGCCAGCTGT
 ACAAGGTCTTCTCCACGGCTCCAGGGCCAGGTTTACCCTCCAGCAAGTGGGGCCTCCAGGCTCAGC
 CATCAGCCAGACCTGCTGCTGGACAGCAGTGGCAGTCACCTCTATGTCCTGACTGCCACCAGGTGGAC



[View online »](#)

CGGATACCTGTGGCAGCCTGCCCCAGTTCCTGACTGTGCCAGCTGCCTCCAGGCCAGGACCCGCTGT
 GTGGCTGGTGTGTCTCCAGGGCAGGTGTACCCGGAAGGGCCAGTGCGGGCGGGCAGGCCAGCTGAACCA
 GTGGCTGTGGAGTTATGAGGAGGACAGCCACTGCCTGCACATCCAGAGCCTGCTGCCGGGCCACACCCC
 CGCCAGGAGCAGGGCCAGGTCACTTTGTCTGTCCCCGGCTGCCCATCCTGGATGCAGATGAATACTTCC
 ATTGTGCGTTCGGGGACTATGACAGCTTGGCTCATGTGGAAGGGCCCCACGTGGCCTGTGTACCCCTCC
 CCAAGACCAGGTGCCACTTAACCCTCCAGGCACAGACCACGTACTGTCCCCCTGGCCCTGATGTTCCGAG
 GACGTACTGTGGCTGCCACCAACTTCTCTTTATGACTGCAGTGCCTCCAGGCCCTGGAGGGCGCTG
 CCCCGTGTGCGCTTGGCTGGGCAGCATCTGGCGGTGTCACTGGTGCCCGCAGAGTAGCCACTGCGTGTA
 CGGAGAGCACTGCCAGAGGGCGAGAGGACCATCTACAGCGCCAGGAGGTGGACATCCAGTGCCTGGC
 CCAGGGGCTTGGCCACAGGTGGAAGGCCTGGCAGGTCCCCACCTGGTGCCTGTGGCTGGGAGAGCCATT
 TGGCCCTACGCGTGCAGAACCTTCAACATTTCCGAGGCCTGCCTGCCTCCTTCCACTGCTGGCTGGAGCT
 GCCTGGAGAACTCGGGGACTGCCGGCCACCCTGGAGGAGACAGCAGGGGATTAGGCCTCATCCACTGC
 CAGGCCACCAGTTTTATCCCTCATGTCCAGCGGGAGCTCCAGTGCCCATCTACGTACCCAGGGTG
 AAGCCCAGAGGCTGGACAACACCCATGCTTTTATGTGATCCTGTACGACTGCGCATGGGCCACCCGGA
 CTGCAGCCACTGCCAAGCGGCCAACAGGAGCCTGGGCTGCCTGTGGTGTGCTGACGGCCAGCCTGCCTGT
 CGCTATGGGCCCTTGTGCCCGCCGGGGGCTGTGGAGCTGCTGTGCTGCGCCACGATTGATGCAGTCG
 AGCCCCGACCGGTCCCCCTGAGGGAGGCTTGGCCCTCACCATCCTGGGCTCCAACCTGGGCCGGGCCCTT
 CGCCGATGTGCAGTACGCCGTGAGCGTGGCCAGCCGGCCCTGCAACCCTGAGCCCTCTCTACCCGACG
 TCGGCCGGATTGTGTGTGACATCTCTGCCCCCAATGGCACCCTGGGCCCGTCCGGGTGGCCATTA
 AGAGCCAGCCACCAGGCATCTCAAGCCAGCACTTCACTACCAGGACCCTGTCTGCTGAGCCTGAGTCC
 TCGCTGGGGCCCCAGGCAGGGGGCACCAGCTCACCATCCGAGGTCAGCACCTCCAGACAGGTGGCAAC
 ACCAGTGCCTTCGTGGGTGGCCAAACCTGTCCCATCCTGGAGCCAGTGTGTCCGGAGGCCATCGTGTGCC
 GTACCAGGCCAGGCTGCCCCAGGAGAAGCAGCGGCTCTTGTGGTCTTTGGCCATGCCACGCCACACT
 GCTCGCCAGCCCCCTCCGCTACACCGCCAAACCCAGCTTGTAGCGGCGGAGCCAGTGCCAGTTCGCG
 GGGGTGGGCGACTGATCCGTGTGAGGGCACCAGGCTAGACGTGGTGCAGCGGCCCTACTGTCTGTGT
 GGCTGGAGGCTGACGCAGAGGTGACGGCTTCCAGGGCCAGCCCCAGGACCCACAGCCAAGGAGGAGCTG
 TGGAGCCCTGCTGCGGACCCCCAGGCTTGTATCCAGCTCGGTGGGGGGCTGCTGCAGTGTCCACCGTC
 TGCTCCGTCAACTCGTCCAGCCTCCTCCTGTGCCGGAGCCCTGCTGTACCAGACAGAGCCACCCGACG
 GGGTCTTCTTACCCTAGACAACGTGCAAGTGGACTTCGCCAGTGCCAGTGGGGGCCAGGGCTTCTGTGA
 CCAGCCAAACCCCGCTGGCACCCCTCAGCCGCGAGGGGCTGCCCGCCCTACCGCTCAAGCCAGGC
 CATGTCTGGATGTGGAGGGCGAGGGCTCAACCTGGGCATCAGCAAGGAGGAGGTGCGCGTGCACATCG
 GCCGCGCGAGTGCCTGGTGAAGACGCTCACGCGACCCACCTGTACTGCGAGCCGCTGCGCACGCCCC
 GCAGCCTGCCAATGGCTCCGGCCTGCCACAGTTCGTGGTGCAGATGGGCAATGTGCAGCTGGCCCTGGGC
 CCTGTGCAGTACGAGGCTGAACCCCGCTGTCTGCCTTTCCCGTGGAGGCCAGGCAGGCGTGGGCATGG
 GTGCTGCAGTGTGATTGCCCGCTGCTCCTCCTCACCCTCATGTACAGGCACAAGAGCAAGCAGGCCCT
 GCGGGACTACCAGAAGGTGCTAGTGCAGCTGGAGAGCCTGGAGACCGGCGTGGGAGACCAGTGCCGAAG
 GAGTTCACAGACCTCATGACGGAGATGACCGACCTCAGCAGCGACCTGGAGGGCAGCGGGATCCCCCTCC
 TGGACTACCGACCTACGCCGAGCGCCTTCTTCCCTGGCCATGGCGGTTGCCCGCTGCAGCCCCAAGCC
 TGAGGGCCAGGGGAGGACGGCCACTGTGCCACTGTGCCAGGGCCTCACGCAGCTCTCAACCTGCTC
 AACAGCAAGCTTCTCCTCACGCTATCCACACCCTGGAGGAGCAGCCAGCTTTCCAGAGGGATC
 GCTGCCATGTGGCTTCGCTGCTGTGCTAGCGCTACACGGCAAGCTGGAGTACCTGACGGACATCATGAG
 GACCCTGCTGGGTGACCTGGCGGCCATTACGTGCACAGGAACCCCAAGCTCATGCTACGACAGGACAGAG
 ACCATGGTGGAGAACTGCTACCAACTGGCTGTCCATCTGCCTGTACGCCTTCTGAGGGAGGTGGCTG
 GTGAACCACTGTACATGCTTCCGGGCCATCCAGTACCAGGTGGACAAAGGCCCGTGGACGCCGTGAC
 AGGCAAGGCCAAACGGACCTGAATGATAGCCGCTTGTGCGGGAGGACGTGGAGTTCAGCCCCCTGACG
 CTGATGGTGTGGTGGGGCCGGGGCTGGCGGGCCGAGGCAGCAGCGAGATGCAGCGCTGCCAGCCC
 GGGTGTGCTCGACACGGACACCATACCCAGGTCAAGGAGAAGGTGTTGGACCAAGTCTACAAGGGCACCCC
 TTCTCCCAGAGGCCCTCAGTGATGCCCTAGACCTTGTGAGTGGCGCTCAGGCCTGGCTGGTACCTGACC
 CTATCGGACGAAGACTTGACCTCCGTGACCCAAAACCACTGGAAGAGACTCAACACCTTGAACACTACA
 AGGTCCCAGATGGAGCAACAGTGGGGCTCGTCCCTCAGCTGCACCGTGGCAGCACCATCTCCCAGAGCCT
 GGCCAGAGGTGCCCTTGGGAGAGAACAACCCACGCTGGAGGATGGCGAGGAGGGGGGGTGTGCCTC
 TGGCACCTGGTGAAGCCACCGAGGAGCCAGAAGGGCCAAGGTGCGGTGCAGCAGCCTGCGGGAGCGCG

AGCCAGCAAGGGCCAAGGCCATTCCGGAAATCTACCTCACCCGTCTGCTGTCCATGAAGGGCACGCTGCA
 GAAGTTTGTGGACGACACCTTCCAGGCCATTCTCAGCGTGAACCGGCCATCCCCATCGCCGTCAAGTAC
 CTGTTTGACCTTCTGGATGAGCTAGCAGAGAAGCACGGCATCGAGGACCCAGGGACCTGCACATCTGGA
 AGACCAACAGTCTGCTGCTGCGGTTCTGGGTGAATGCCTGAAGAAGCCACAGCTCATCTTTGATGTACG
 GGTGTCGGACAATGTGGACGCCATCCTTGTGTATCGCCAGACCTTATTGACTCCTGTACCACCTCG
 GAGCATAAAGTGGGCCGGGATCCCCAGTGAACAACTGCTCTACGCCGGGAGATCCCACGCTACAAGC
 AGATGGTGGAGAGTACTATGCGGACATTCGCCAGAGCTCTCCGGCGAGCTACCAGGAGATGAACCTCTGC
 TTTGGTGAAGTCTCCGGGAACACTTCTGCTCCCCACTGTCTGGAGGCTCTGCAAGAAGCTTACAAC
 CACATCCACAGGTAATGATCAGATTATCAGTGCCTGGAGGAGACCTGTGGCCAGAACTGCAGC
 TGGCTGCCGCTGCAGCAGGTCCGCCCTGTTGAAAAAAAGTACTGACTGACCTG

AGCGGACCGACGCGTACGCGGCCGCTCGAG - GFP Tag - GTTTAA

Protein Sequence:

>RG228700 representing NM_001163257
 Red=Cloning site Green=Tags(s)

MELTPASSLTCSELLSPRLPGSFPQLRRVPPCSRPLPKAPVMARWPPFGLCLLLLLSPPPLPLTGAHRF
 SAPNTTLNHLALAPGRGTLVYGAVNRLFQLSPELQLEAVAVTGPVIDSPDCVPRDPAECPQAQLTDNAN
 QLLLVSRAQELVACQVVRQVCESTRRLGDVAEVLQAEDPGDQGFVAANTPGVATVGLVPLPGRDLLL
 VARGLAGKLSAGVPLAIRQLAGSQPFSSSEGLGRLVVGDFSDYNNYSYVGFADARSAYFVFRRRGARAQA
 EYRSYVARVCLGDTNLYSYVEVPLACQGGQLIQAFLAPGTLGVFAAGPRGTQAALCAFPVVELGASME
 QARRLCYTAGGRPSGAEAEATVEYGVTSRCVTLPDPSYPCGDEHTPSPIAGRQPLEVQPLKLGQPV
 SAVAALQADGHMIAFLGDTQGGQLYKVFVHGSQGVYHSQQVQPPGSAISPDLLLDSGSHLYVLTAAHQVD
 RIPVAACPQFPDCAASCLQAQDPLCGWCVLQGRCTRKGQCGRAGQLNQWLWSYEEDSHCLHIQSLLPGHHP
 RQEQGQVTLSPRLPILDADYFHFCAFVGDYDLSLAHVEGPHVACVTPPDQVPLNPPGTDHVTPLALMFE
 DVTVAATNFSFYDCSAVQALEAAAPCRACVGSIIWRCHWCPQSSHCYVGEHCPEGERTIYSAQEVDIQVRG
 PGACPQVEGLAGPHLVPVWESHLLALRVRNLQHFRGLPASFHWCLELPGELRGLPATLEETAGDSGLIHC
 QAHQFYPSMSQRELVPVIYVTQGEAQRLDNTHALYVILYDCAMGHPDCSHCQAANRSLGCLWCADGQPAC
 RYGPLCPPGAVELLCPAPSIDAVEPLTGPPEGLLALITLGSNLGRAADVQYAVSVASRPCNPEPSLYRT
 SARIVCVTSPAPNGTTPVPRVAIKSQPPGISSQHFTYQDPVLLSLSPRWGPQAGGTQLTIRGQHLQTGGN
 TSAFVGGQPCPILEPVCEAIVCRTRPQAAPGEAAVLVVFVGHQAQRTLLASPFRYTANPQLVAAEPSASFR
 GGGRLIRVRGTGLDVVQRPLL SVWLEADADEVQASRAQPDPQPRRSCGAPAADPQACIQLGGLLQCSTV
 CSVNSSLLLLCRSPAVPDRAHPQRVFFTLDNVQVDFASASGGQGFYQPNPRLAPLSREGPARPYRLKPG
 HVL DVEGEGLNLGISKEEVRVHIGRGECLVKTLTRTHLYCEPPAHAPQPANGSGLPQFVVMGNVQLALG
 PVQYEAEPPLSAFPVEAQAGVGMGAAVLIAAVLLL TLMYRHKSKQALRDYQKVLVQLESLETGVGDQCRK
 EFTDLMTEMTDLSSDLEGSIPFLDYRTYAERAFPPGHGGCPLQPKPEGPGEDGHCATVRQGLTQLSNLL
 NSKLFLLTLIHTLEEQPSFSQRDRCHVASLLSLALHGKLEYLTDIMRTLLGDAAHYVHRNPKMLRRETE
 TMVEKLLTNWLSICLYAFLREVAGEPLYMLFRAIQYQVDKGPVDAVTGKAKRTLNDSSRLREDVEFQPLT
 LMVLVGPAGGAAGSSEMQRVPARVLDTDITIQVKEKVLQVYKGTQPSQRPSVHALDLEWRSLAGHLT
 L SDEDLTSVTQNHWRKLNLTQHYKVPDGTAVGLVPQLHRGSTISQSLAQRCPGENIPTLEDGEEGVCL
 WHLVKATEEPEGAKVRCSSLREREPARAKAIPETIYLTRLLSMKGTQKQFVDDTFQAILSVNRPIPIAVKY
 LFDLLDELAEKHGIEDPGLHIWKTNSLLLRFVWVNAKPNQLIFDVRVSDNVDAILAVIAQTFIDSCSTS
 EHKVGRDSPVNKLLYAREIPRYKQMVRYADIRQSSPASYQEMNSALAEISGNYTSAPHCLALQELYN
 HIHRYDQIISALEEDPVGKQLQLACRLQQVAALVENKVTDL

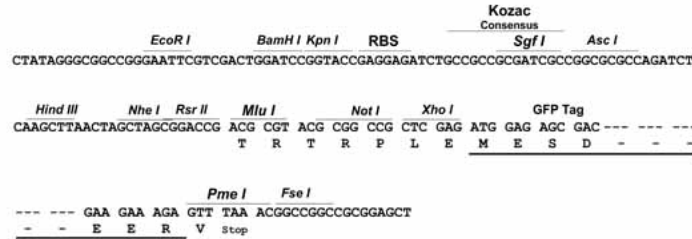
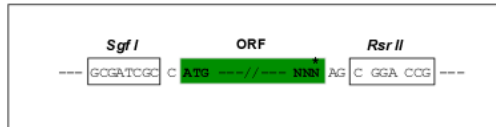
SGPTRRRLE - GFP Tag - V

Restriction Sites:

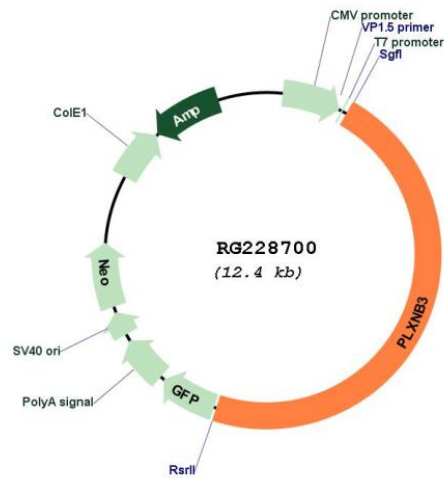
Sgfl-RsrII

Cloning Scheme:

Cloning sites used for ORF Shuttling:



Plasmid Map:



ACCN: NM_001163257

ORF Size: 5796 bp

OTI Disclaimer:	The molecular sequence of this clone aligns with the gene accession number as a point of reference only. However, individual transcript sequences of the same gene can differ through naturally occurring variations (e.g. polymorphisms), each with its own valid existence. This clone is substantially in agreement with the reference, but a complete review of all prevailing variants is recommended prior to use. More info
OTI Annotation:	This clone was engineered to express the complete ORF with an expression tag. Expression varies depending on the nature of the gene.
Components:	The ORF clone is ion-exchange column purified and shipped in a 2D barcoded Matrix tube containing 10ug of transfection-ready, dried plasmid DNA (reconstitute with 100 ul of water).
Reconstitution Method:	<ol style="list-style-type: none">1. Centrifuge at 5,000xg for 5min.2. Carefully open the tube and add 100ul of sterile water to dissolve the DNA.3. Close the tube and incubate for 10 minutes at room temperature.4. Briefly vortex the tube and then do a quick spin (less than 5000xg) to concentrate the liquid at the bottom.5. Store the suspended plasmid at -20°C. The DNA is stable for at least one year from date of shipping when stored at -20°C.
RefSeq:	NM_001163257.1 , NP_001156729.1
RefSeq Size:	6377 bp
RefSeq ORF:	5799 bp
Locus ID:	5365
UniProt ID:	Q9ULL4
Cytogenetics:	Xq28
Protein Families:	Druggable Genome
Protein Pathways:	Axon guidance
Gene Summary:	The protein encoded by this gene is a member of the plexin family. It functions as a receptor for semaphorin 5A, and plays a role in axon guidance, invasive growth and cell migration. Alternatively spliced transcript variants encoding different isoforms have been found for this gene. [provided by RefSeq, Sep 2009]