

## Product datasheet for **RG228669**

### LTBP1 (NM\_001166266) Human Tagged ORF Clone

#### Product data:

Product Type:	Expression Plasmids
Product Name:	LTBP1 (NM_001166266) Human Tagged ORF Clone
Tag:	TurboGFP
Symbol:	LTBP1
Mammalian Cell Selection:	Neomycin
Vector:	pCMV6-AC-GFP (PS100010)
E. coli Selection:	Ampicillin (100 ug/mL)
ORF Nucleotide Sequence:	>RG228669 representing NM_001166266 Red=Cloning site Blue=ORF Green=Tags(s)

TTTTGTAATACGACTCACTATAGGGCGGCCGGAATTCGTCGACTGGATCCGGTACCGAGGAGATCTGCC  
GCC**CGATCGCC**

ATGGATACTAAGCTGATGTGTTTGTGTTCTTTTTCTCCCTGCCTCCGCTCCTAGTGAGTAACCACACTG  
GCCGCATCAAGGTGGTCTTTACTCCGAGCATCTGTAAAGTGACCTGCACCAAGGGCAGCTGTGAGAACAG  
CTGTGAGAAGGGGAACACCACACTCTCATTAGTGAGAATGGTCATGCTGCCGACCCCTGACGGCCACG  
AACTCCGAGTGGTAATTTGCCATCTCCATGTATGAATGGTGCCAGTGCAGTTCAAGGGACAAATGTC  
AGTGCCCTCAAATTTACAGGAAAACCTTTGTGATCCAGTCCATGGTGCCAGCGTGCCTAAACTTTA  
TCAGCATTCCCAGCAGCCAGGCAAGGCGTTGGGGACGCATGTCATCCATTCAACACATACCTTGCCTCTG  
ACCGTGACTAGCCAGCAAGGAGTCAAAGTAAAATTTCTCCTAACATAGTCAATATCCATGTGAAACATC  
CTCCTGAAGCTTCCGTCCAGATACATCAGGTTTCAAGAATTGATGGCCCAACAGGCCAGAACAGAAAAGA  
AGCTCAACCAGGCCAATCCCAAGTCTCGTACCAAGGGCTTCTGTCCAGAAGACCCAGACCATACATTCC  
ACATACTCCCACCAGCAGGTCAATCCTCACGTCTACCCCGTGGCTGCTAAGACACAGCTTGGCCGGTGCT  
TCCAGGAAACCATTGGGTACAGTGTGGCAAAGCGCTCCCTGGCCTTTCAAAGCAAGAGGACTGCTGTGG  
AACTGTGGGTACCTCCTGGGCTTTAACAATGCCAGAAATGCCCAAGAAACCATCTTATCATGGATAC  
AACCAATGATGGAATGCCTACCGGTTATAAGCGGGTTAACAACACCTTTTGCCAAGATATTAATGAAT  
GTCAGCTACAAGGTGATGCCCTAATGGTGAGTGTGTAATACCATGGGCAGCTATCGATGTACCTGCAA  
AATAGGATTTGGGCCGGATCCTACCTTTCAAGTTGTGTTCTCTGATCCCCCTGTGATCTCGGAAGAGAAA  
GGGCCCTGTTACCGACTTGTGAGTCTGGAAGACAGTGTATGCACCCTCTGTCTGTTACCTCACCAAGC  
AGCTCTGCTGTTGATGTGGCAAGGCTGGGGCCACACTGTGAGAAATGTCCCTTCCAGGCACAGC  
CAAGGAAGAGCCAGTGGAGGCCCTGACCTTCTCCCGGGAACACGGGCCAGGAGTGGCGGAGCCAGAAGTG  
GCAACTGCACCCCTGAAAAGGAAATACCTTATTGGATCAAGAGAAAACCAACTTGAGCCTGGTCAAC  
CCCAGCTGTCTCCAGGCATTTCCACTATTATCTGCATCCACAGTTTCCAGTAGTGATTGAAAAACATC  
ACCTCCTGTGCCCTGTTGAAGTAGCTCCTGAAGCTTCTACGTCTAGTGCCAGCAAGTGTGCTCCTACT  
CAAGTGACAGAAAATCAATGAATGTAAGTGAACCTGATATCTGTGGAGCAGGACACTGCATTAACCTAC  
CAGTGAGATATACCTGTATATGCTACGAGGGCTACAGGTTCAAGTGAACAACAGAGGAAATGTGTGGATAT



[View online »](#)

TGATGAGTGTACTCAGGTCCAACACCTCTGCTCCCAGGGCCGCTGTGAAAACACCGAGGGAAGTTTCTTG  
TGCAATTTGCCAGCAGGATTTATGGCCAGTGAGGAGGTTACTAACTGCATAGATGTTGACGAATGCCTGA  
GGCCGGACGTCTGTGGGGAGGGGCACTGTGTCAACTGTGGGGCCCTCCGGTGTGAATACTGTGACAG  
CGGGTACCGCATGACTCAGAGAGGCCGTTGTGAGGATATTGATGAATGTTGAATCCAAGCACTTGTTCCA  
GATGAGCAGTGTGTGAATTCCTCGATCTTACCAGTGCCTCCGCAACAGCTGCGCAATGGTGATTGTTCCAACCT  
TGAAGGCTCCTACATGTGTTTATGCCACAAAGGCTATACCCGGACTCCGGACCACAAGCACTGTAGAGAT  
ATTGATGAATGTCAGCAAGGGAATCTATGTGTAACGGGCAAGTCAAAAAATACCGAGGGCTCCTTCAGT  
GCACCTGTGGACAGGGTACCAGCTGTCGGCAGCTAAAGACCAGTGTGAAGACATTGATGAATGCCAGCA  
CCGTCACTCTGTGCTCATGGGCAGTGCAGGAACACTGAGGGCTCTTTTCAATGTGTGTGTGACCAGGGT  
TACAGAGCATCTGGGCTTGAGACCAGTGTGAAGATATCAATGAATGCTTGGAGGACAAGAGTGTGGCC  
AGAGAGGAGACTGCATTAATACTGCAGGGTCTATGATTGACTTGTCCGGATGGATTTACAGTGTAGTA  
CAATAAAACATGTCAAGATTAATGAATGTGAACATCCAGGGCTCTGTGGTCCGAAGGGGAGTGCCTA  
AACACAGAGGGTCTTTCCATTGTGTCTGCCAGCAGGGTTTCTCAATCTCTGCAGATGGCCGTACGTGTG  
AAGATGTGAATGAATGTGAAGTGTGAGTGGGGTGTGTGGTGAAGCCTTCTGTGAAAACGTGGAAGGGTC  
CTTCTGTGCGTGTGTGCTGATGAAAACCAAGAGTACAGCCCATGACTGGGCAGTGCCTGCTCCCGACC  
TCCACAGATTTAGATGTAGATGTAGATCAACCCAAAGAAGAAAAGAAAGATGCTACTATAATCTCAATG  
ACGCCAGTCTCTGTGATAATGTGTTGGCCCCAATGTCACGAAACAAGAAATGCTGCTGTACATCAGGCGC  
GGGATGGGGAGATAACTGCGAAATCTTCCCCTGCCCGTCTTGGGAAGTGTGAGTTCAGTAAATGTGT  
CCCAAAGGAAAGGTTTTGTGCTGTGGAGAATCATCTTCTGAAGCTGGTGGTGAAGTATAAAGATG  
CAGATGAATGCCTACTTTTTGGACAAGAAATCTGCAAAAATGGTTTCTGTTTGAACACTCGGCCTGGGTA  
TGAATGCTACTGTAAGCAAGGGACGTACTATGATCCTGTGAAACTGCAGTGTGATGATGATGATGATG  
CAAGACCCAGTAGTTGATTTGATGGCCAGTGTGTTAATACAGAGGGCTTTACAACCTGCTTCTGTACTC  
ACCCATGGTCTGGATGCGTCAGAAAAAAGATGTATACGACCGGCTGAGTCAAACGAACAAATAGAAGA  
AACTGATGTCTACCAAGATTTGTGCTGGGAACATCTGAGTGTGAATACGTGTGTAGCCGCCTCTGTG  
GGCAAGCAGACAACGTACTGAGTGTGCTGTGTATGGAGAGGCCTGGGCATGCAGTGTGCCCTCT  
GCCCCCTGAAGGATTCAGATGACTATGCTCAGCTGTGTAACATCCCCGTGACGGGACGCCGCAGCCATA  
TGGACGGGACGCCTTGGTTGACTTCAGTGAACAGTATACTCCAGAAGCCGATCCCTACTTCATCCAAGAC  
CGTTTTCTAAATAGCTTTGAGGAGTTACAGGCTGAGGAATGCGGCATCCTCAATGGATGTGAAAATGGTC  
GCTGTGTGAGGGTCCAGGAAGGTTACACCTGCGATTGCTTTGATGGGTATCACTGGATACGGCCAAGAT  
GACCTGTGTCGATGTAATGAATGCGATGAGTTGAACAACCGGATGTCTCTGCAAGAATGCCAAGTGC  
ATTAACACCGATGGTTCCTACAAGTGTGTTGTGCTGCCAGGCTACGTGCCTTCTGACAAGCCAACTACT  
GCACTCCGTTGAATACCGCCTTGAATTTAGAGAAAGACAGTGACCTGGAG

ACGCGTACGCGGCCGCTCGAG - GFP Tag - GTTTAA

**Protein Sequence:** >RG228669 representing NM\_001166266  
 Red=Cloning site Green=Tags(s)

```

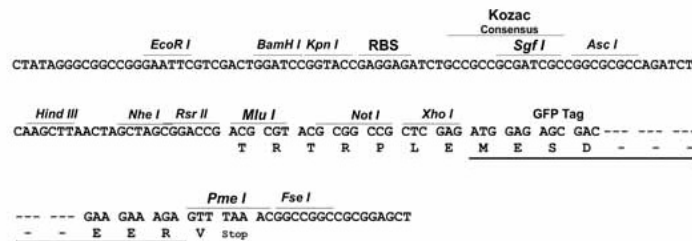
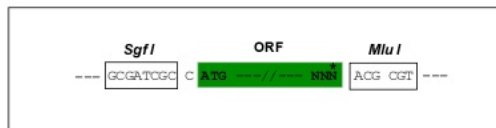
MDTKLMCLLFFFSLPPLLVSNHTGRIKVVFTPSICKVVTCTKGSCQNSCEKGNTTTLISENGHAADTLTAT
NFRVVIHLPCMNGGQCSSRDKCQCPPNFTGKLCQIPVHGASVPKLYQHSQQPGKALGTHVIHSTHTLPL
TVTSQQGVKVKFPPNIVNIHVKHPPPEASVQIHQVSRIDGPTGQKTKEAQPGQSQVSYQGLPVQKTQTIHS
TYSHQQVIPHVYPVAAKTQLGRCFQETIGSQCGKALPGLSKQEDCCGTGTGTSWGFNKCQKCPKPSYHGY
NQMMECLPGYKRVNNTFCQDINECQLQGVCPNGECLNTMGSYRCTCKIGFGPDPTFSSCVDPDPPVISEEK
GPCYRLVSSGRQCMHPLSVHLTKQLCCCSVGKAWGPHCEKCPPLPTAKEEPVEALTFREHGPVGAPEEV
ATAPPEKEIPSLDQEKTKLEPGQPQLSPGISTIHLHPQFPVIEKTSPPVPVEVAPEASTSSASQVIAPT
QVTEINECTVNPDICGAGHCINLPVRYTCICYEGYRFSEQQRKCVDIDECTQVQHLCSQGRCENTEGSFL
CICPAGFMASEEGTNCIDVDECLRPDVCGEHCVNTVGAFRCEYCDSGYRMTQRGRCEDIDECLNPSTCP
DEQCVNSPGSYQVPCTEGFRGWNGQCLDDECLPNVCANGDCSNLEGSYMC SCHKGYTRTPDHKHC RD
IDECQQGNL CVNGQCKNTEGSFRCTCGQYQL SAAKDQCEDIDECQHRHLCAHGQCRNTEGSFQCVCDQG
YRASGLGDHCEDINECLEDKSVCQRGDCINTAGSYDCTCPDGFQLDDNKTQDINECEHPGLCGPQGECL
NTEGSFHCVCQQGFSISADGRTCEDVNECELLSGVCGEAFCEVNEGSFLCVCADENQEYSPMTGQCRSRT
STDLDVDVDQPKKEEKCEYNYLNDASLCDNVLAPNVTKQECCTSGAGWGDNCEIFPCPVLGTAEFTEMC
PKGKGFPVAGESSSEAGGENYKDADECLLFGQEI CKNGFCLNTRPGYECYCKQGTYYDPVKLQCFDMDEC
QDPSSCIDGQCVNTEGSYNCFCTHPMVLDASEKRCIRPAESNEQIEETD VYQDL CWEHL SDEYVCSRPLV
GKQTTYTECCCLYGEAWGMQCALCPLKDSDDYAQLCNIPVTGRRQPYGRDALVDFSEQYTP EADPYFIQD
RFLNSFEELQAECEGILNGCENGRVVRVQEGYTCDFDGYHLDTAKMTCVDVNECDELNNRMSLCKNAKC
INTDGSYKCLCLPGYVPSDKPNYCTPLNTALNLEKDS DLE
  
```

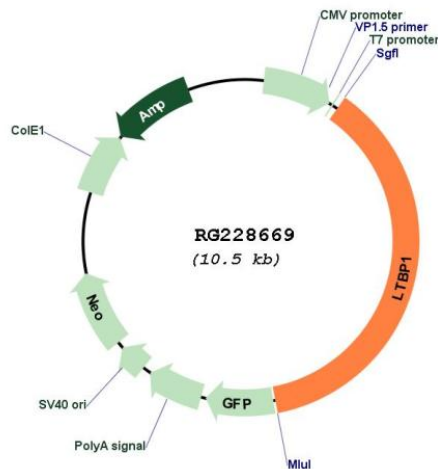
TRTRPLE - GFP Tag - V

**Restriction Sites:** SgfI-MluI

**Cloning Scheme:**

Cloning sites used for ORF Shuttling:



**Plasmid Map:**


**ACCN:** NM\_001166266

**ORF Size:** 3900 bp

**OTI Disclaimer:** The molecular sequence of this clone aligns with the gene accession number as a point of reference only. However, individual transcript sequences of the same gene can differ through naturally occurring variations (e.g. polymorphisms), each with its own valid existence. This clone is substantially in agreement with the reference, but a complete review of all prevailing variants is recommended prior to use. [More info](#)

**OTI Annotation:** This clone was engineered to express the complete ORF with an expression tag. Expression varies depending on the nature of the gene.

**Components:** The ORF clone is ion-exchange column purified and shipped in a 2D barcoded Matrix tube containing 10ug of transfection-ready, dried plasmid DNA (reconstitute with 100 ul of water).

**Reconstitution Method:**

1. Centrifuge at 5,000xg for 5min.
2. Carefully open the tube and add 100ul of sterile water to dissolve the DNA.
3. Close the tube and incubate for 10 minutes at room temperature.
4. Briefly vortex the tube and then do a quick spin (less than 5000xg) to concentrate the liquid at the bottom.
5. Store the suspended plasmid at -20°C. The DNA is stable for at least one year from date of shipping when stored at -20°C.

**RefSeq:** [NM\\_001166266.1](#), [NP\\_001159738.1](#)

**RefSeq Size:** 5023 bp

**RefSeq ORF:** 3903 bp

**Locus ID:** 4052

**UniProt ID:** [Q14766](#)

**Cytogenetics:** 2p22.3

**Protein Families:** Druggable Genome, Secreted Protein

**Protein Pathways:** TGF-beta signaling pathway

**Gene Summary:** The protein encoded by this gene belongs to the family of latent TGF-beta binding proteins (LTBPs). The secretion and activation of TGF-betas is regulated by their association with latency-associated proteins and with latent TGF-beta binding proteins. The product of this gene targets latent complexes of transforming growth factor beta to the extracellular matrix, where the latent cytokine is subsequently activated by several different mechanisms. Alternatively spliced transcript variants encoding different isoforms have been identified. [provided by RefSeq, Jul 2008]