

Product datasheet for **RG228653**

KCNMA1 (NM_001161353) Human Tagged ORF Clone

Product data:

Product Type:	Expression Plasmids
Product Name:	KCNMA1 (NM_001161353) Human Tagged ORF Clone
Tag:	TurboGFP
Symbol:	KCNMA1
Synonyms:	bA205K10.1; BKTM; CADEDS; hSlo; IEG16; KCa1.1; LIWAS; MaxiK; mSLO1; PNKD3; SAKCA; SLO; SLO-ALPHA; SLO1
Mammalian Cell Selection:	Neomycin
Vector:	pCMV6-AC-GFP (PS100010)
E. coli Selection:	Ampicillin (100 ug/mL)
ORF Nucleotide Sequence:	>RG228653 representing NM_001161353 Red=Cloning site Blue=ORF Green=Tags(s)

TTTTGTAATACGACTCACTATAGGGCGGCCGGGAATTCGTCGACTGGATCCGGTACCGAGGAGATCTGCC
GCC**CGATCGCC**

ATGGCAAATGGTGGCGGGCGGGCGGCAGCAGCGGGCGGGCGGGCGGGCGGGAGGCAGCAGTCTTA
GAATGAGTAGCAATATCCACGCGAACCATCTCAGCCTAGACGCGTCTCTCTCTCTCTCTCTCTCT
CTCTTCTTCTTCT
ATCCCGGTGACCATGGAGGTGCCGTGCGACAGCCGGGGCCAAACGCATGTGGTGGGCTTCTCTGGCCTCT
CCATGGTGACTTCTCTGGGGGCTCTTATCATCTTGTCTCTGGCGACGCTCAAGTACCTGTGGACCGT
GTGCTGCCACTGCGGGGCAAGACGAAGGAGGCCAGAAGATTAACAATGGCTCAAGCCAGGCGGATGGC
ACTCTCAAACCAGTGGATGAAAAAGAGGAGGCAGTGGCCGCCGAGGTCGGCTGGATGACCTCCGTGAAGG
ACTGGGCGGGGGTATGATATCCGCCAGACACTGACTGGCAGAGTCTGGTTGTCTTAGTCTTTGCTCT
CAGCATCGGTGCACTTGAATATACTTCATAGATTCATCAAACCAATAGAATCTCTGCCAGAATTTCTAC
AAAGATTTACATTACAGATCGACATGGCTTTCACAGTGTCTTCTCTCTCTCTCTCTCTCTCTCTCTCT
TTGCAGCCAACGATAAATGTGGTTCTGGCTGGAAGTGAAGTCTGTAGTGGATTTCTTACCGGTGCCCTT
CGTGTTTGTGTCTGTACTTAAACAGAAGTGGCTTGGTTTGGATTTTAAAGAGCTCTGAGACTGATA
CAGTTTTCAGAAATTTTCAGTTTCTGAATATTCTTAAACAAGTAATCCATCAAGCTGGTGAATCTGC
TCTCCATATTTATCAGCACGTGGCTGACTGCAGCCGGTTCATCCATTTGGTGGAGAATTCAGGGGACCC
ATGGGAAAATTTCAAACAACAGGCTCTCACCTACTGGAAATGTGTCTATTTACTCATGGTCAACAATG
TCCACCGTTGGTTATGGGATGTTTATGCAAAAACACACTTGGGCGCCTCTCATGGTCTTCTTCTCATCC
TCGGGGGACTGGCCATGTTTGCAGCTACGTCCCTGAAATCATAGAGTTAATAGGAAACCGCAAGAATA
CGGGGGCTCTATAGTGCGGTTAGTGAAGAAAGCACATTGTGGTCTGCGGACACATCACTCTGGAGAGT
GTTTCCAACCTTCTGAAGGACTTCTGCACAAGGACCGGATGACGTCAATGTGGAGATCGTTTTTCTTCT
ACAACATCTCCCCAACCTGGAGCTTGAAGCTCTGTTCAAACGACATTTACTCAGTGGAATTTTATCA



GGGTTCCGTCCTCAATCCACATGATCTTGCAAGAGTCAAGATAGAGTCAGCAGATGCATGCCTGATCCTT
GCCAACAAAGTACTGCGCTGACCCGGATGCGGAGGATGCCTCGAATATCATGAGAGTAATCTCCATAAAGA
ACTACCATCCGAAGATAAGAATCATCACTCAAATGCTGCAGTATCACAACAAGGCCCATCTGCTAAACAT
CCCAGCTGGAATTGGAAAGAAGGTGATGACGCAATCTGCCTCGCAGAGTTGAAGTTGGGCTTCATAGCC
CAGAGCTGCCTGGCTCAAGGCCCTCCACCATGCTTGCCAACCTTTCTCCATGAGGTATTTCATAAAGA
TTGAGGAAGACACATGGCAGAAATACTACTTGGAAAGGAGTCTCAAATGAAATGTACACAGAATATCTCTC
CAGTGCCTTCGTGGGTCTGTCTCCCTACTGTTTGTGAGCTGTGTTTTGTGAAGCTCAAGCTCCTAATG
ATAGCCATTGAGTACAAGTCTGCCAACCGAGAGAGCCGTATATTAATTAATCCTGGAAACCATCTTAAGA
TCCAAGAAGTACTTTAGGATTTTTTCATCGCAAGTGTGCAAAAGAAGTAAAAGGGCATTTTTTTACTG
CAAGGCCGTGCATGATGACATCACAGATCCCAAAAAGAATAAAAAAATGTGGCTGCAAACGGCTTGAAGAT
GAGCAGCCGTCAACACTATCACCAAAAAAAGCAACGGAATGGAGGCATGCGGAACTCACCAACACCT
CGCCTAAGCTGATGAGGCATGACCCCTTGTTAATTCCTGGCAATGATCAGATTGACAACATGGACTCCAA
TGTGAAGAAGTACGACTCTACTGGGATGTTTCTACTGGTGTGCACCAAGGAGATAGAGAAAGTCATCCTG
GTCACAGGCTGGATGCCGTATCTGGGACCTAGGGTTTTAATGACTTGCCTGGATATTGGTGTAGTATGCA
TGCCAACCTGATATTCAATCAACATCTCCTGCCAGCATAAAAAAGTTTAAAGGAGACTCGAAGTGAAGCTGC
CATGACCGTCTGAGTGGCCATGTCGTGGTCTGCATCTTTGGCGACGTCAGCTCAGCCCTGATCGGCCTC
CGGAACCTGGTGTGACCGCTCCGTGCCAGCAACTTTCATTACCATGAGCTCAAGCACATTGTGTTTGTGG
GCTCTATTGAGTACCTCAAGCGGAATGGGAGACGCTTCATAACTCCCCAAAGTGTCCATATTGCTGG
TACGCCATTAAGTCGGGCTGATTTAAGGGCTGTCAACATCAACCTCTGTGACATGTGCGTTATCCTGTCA
GCCAATCAGAATAATATTGATGATACTTCGCTGCAGGACAAGGAATGCATCTTGGCGTCACTCAACATCA
AATCTATGCAGTTTGTGATGACAGCATCGGAGTCTGCAGGCTAATCCCAAGGGTTACACCTCCAGGAAT
GGATAGATCCTCTCCAGATAACAGCCCAGTGCACGGGATGTTACGTCAACCATCCATCACAACCTGGGGTC
AACATCCCCATCATCACTGAAGTGTGAACTGATACTAATGTTTCAAGTTTTGGACCAAGACGATGATGATG
ACCCTGATACAGAACTGTACCTCACGCAGCCCTTTGCCTGTGGGACAGCATTGCGGTGAGTGTCCCTGGA
CTCACTCATGAGCGGACGTAATCAATGACAATATCCTCACCCCTGATACGGACCCTGGTACCGGAGGA
GCCACGCCGAGCTGGAGGCTCTGATTGCTGAGGAAAACGCCCTTAGAGGTGGCTACAGCACCCCGCAGA
CACTGGCCAATAGGGACCGCTGCCGCGTGGCCAGTTAGCTCTGCTCGATGGGCCATTTGCGGACTTAGG
GGATGGTGGTTGTTATGGTGTCTGTTCTGCAAAGCTCTGAAAACATATAATATGCTTTGTTTTGGAATT
TACCGGCTGAGAGATGCTCACCTCAGCACCCCGTGCAGTGCACAAGAGGTATGTCATACCAACCCGC
CCTATGAGTTTGTGCTCGTGCAGGACCTGATCTTCTGCTTAATGCAGTTTGACCACAATGCCGCGCA
GTCCCGGGCCAGCTGTCCATTCTCCACTCGTCGAGTCTCCAGCAAGAAGAGCTCCTCTGTTTAC
TCCATCCCATCCACAGCAAACCGACAGAACCGGCCCAAGTCCAGGGAGTCCCGGGACAAACAGAAGTACG
TGCAGGAAGAGCGGCTT

AGCGGACCGACGCGTACGCGGCCGCTCGAG - GFP Tag - GTTTAA

Protein Sequence: >RG228653 representing NM_001161353
 Red=Cloning site Green=Tags(s)

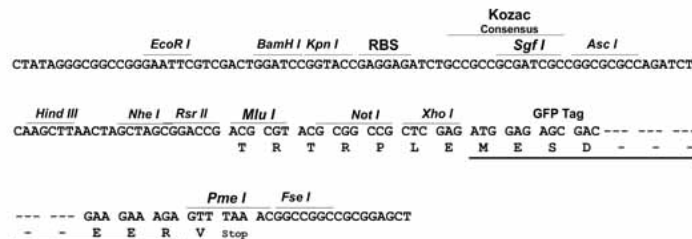
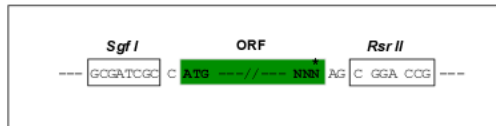
MANGGGGGGGSSGGGGGGSSLRMSSNIHANHLSLDASSSSSSSSSSSSSSSSSSSSSSSVHEPKMDALI
 IPVTMEVPCDSRQRMWWAFLASSMVTFFGGFLIILLWRTLKYLWTVCCCHGGKTKAEQKINNGSSQADG
 TLKPVDEKEEAVAAEVGWMTSVKDWAGVMISAQTLTGRVLVVLFALSIGALVIYFIDSSNPIESCQNFY
 KDFTLQIDMAFNVFLLYFGLRFIAANDKLWFLEVNVSVDFFTVPPVFSVYLNRSWLGRLRFLRALRLI
 QFSEILQFLNILKTSNSIKLVNLLSIFISTWLTAAGFHILVENSGDPWENFQNNQALTYWECVYLLMVTM
 STVGYGDVYAKTTLGRLFMVFFILGGLAMFASYVPEIIEILIGNRKKYGGSYSAVSGRKHIVVCGHITLES
 VSNFLKDFLHKDRDDVNVIEIVFLHNI SPNLELEALFKRHFTQVEFYQGSVLNPHDLARVKIESADAACLIL
 ANKYCADPDAEDASNIMRVISIKNYHPKIRIITQMLQYHNKAHLLNIPSWNKEGDDAICLAELKLGFAIA
 QSCLAQGLSTMLANLFSMRSFIKIEEDTWQKYYLEGVSNEMYTEYLSSAFVGLSFPTVCELFCVVKLKLMM
 IAIEYKSANRESRILINPGNHLKIQEGTLGFFIASDAKEVKRAFFYCKACHDDITDPKRIKCKGCKRLED
 EQPSTLSPKKKQRNGMRNSPNTSPKLMRHDPLLIPGNDQIDNMDSNVKKYDSTGMFHWCAPKEIEKVIL
 VTGWMPYLGPRVLMTCLDIGVVCMPDTIQSTSPASIKKFKETRSEAAMTVLSGHVVVCFIGDVSSALIGL
 RNLVMPLRASNFHYELKHIVFVGSIEYLKREWETLHNFPKVSILPGTPLSRADLRVNLINLDCMVCVILS
 ANQNNIDDTSLQDKECILASLNKSMQFDDSIGVLQANSQGFPPGMDRSPDNPVHGMRLRQPSITTG
 NIPITELVNDTNVQFLDQDDDDDPDELYLTQPFCGTAFVSVLDSLMSATYFNDNILTIRTLVTGG
 ATPELEALIAEENALRGGYSTPQTLANRDRCRVAQLALLDGPFADLDGGGCGDLFCALKTYNMLCFGI
 YRLRDAHLSTPSQCTKRYVITNPPYEFELVPTDLIFCLMQFDHNAQSRASLSHSSHSSQSSSKSSSVH
 SIPSTANRQNRPKSRESRDKQKYVQEERL

SGPTRRRLE - GFP Tag - V

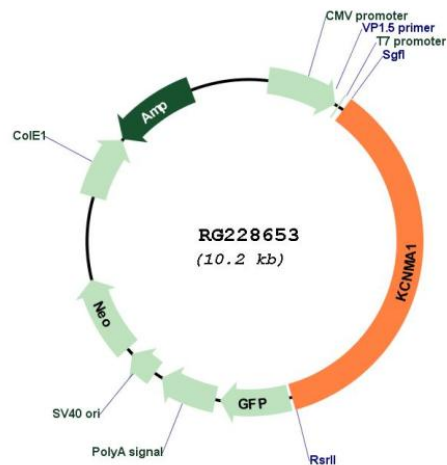
Restriction Sites: SgfI-RsrII

Cloning Scheme:

Cloning sites used for ORF Shuttling:



Plasmid Map:



ACCN: NM_001161353

ORF Size: 3657 bp

OTI Disclaimer: The molecular sequence of this clone aligns with the gene accession number as a point of reference only. However, individual transcript sequences of the same gene can differ through naturally occurring variations (e.g. polymorphisms), each with its own valid existence. This clone is substantially in agreement with the reference, but a complete review of all prevailing variants is recommended prior to use. [More info](#)

OTI Annotation: This clone was engineered to express the complete ORF with an expression tag. Expression varies depending on the nature of the gene.

Components: The ORF clone is ion-exchange column purified and shipped in a 2D barcoded Matrix tube containing 10ug of transfection-ready, dried plasmid DNA (reconstitute with 100 ul of water).

Reconstitution Method:

1. Centrifuge at 5,000xg for 5min.
2. Carefully open the tube and add 100ul of sterile water to dissolve the DNA.
3. Close the tube and incubate for 10 minutes at room temperature.
4. Briefly vortex the tube and then do a quick spin (less than 5000xg) to concentrate the liquid at the bottom.
5. Store the suspended plasmid at -20°C. The DNA is stable for at least one year from date of shipping when stored at -20°C.

RefSeq: [NM_001161353.2](#)

RefSeq Size: 6243 bp

RefSeq ORF: 3660 bp

Locus ID: 3778

UniProt ID: [Q12791](#)

Cytogenetics: 10q22.3

Protein Families:	Druggable Genome, Ion Channels: Potassium, Transmembrane
Protein Pathways:	Vascular smooth muscle contraction
Gene Summary:	MaxiK channels are large conductance, voltage and calcium-sensitive potassium channels which are fundamental to the control of smooth muscle tone and neuronal excitability. MaxiK channels can be formed by 2 subunits: the pore-forming alpha subunit, which is the product of this gene, and the modulatory beta subunit. Intracellular calcium regulates the physical association between the alpha and beta subunits. Alternatively spliced transcript variants encoding different isoforms have been identified. [provided by RefSeq, Jul 2008]