

Product datasheet for **RG228619**

NPAS3 (NM_001164749) Human Tagged ORF Clone

Product data:

Product Type:	Expression Plasmids
Product Name:	NPAS3 (NM_001164749) Human Tagged ORF Clone
Tag:	TurboGFP
Symbol:	NPAS3
Synonyms:	bHLHe12; MOP6; PASD6
Mammalian Cell Selection:	Neomycin
Vector:	pCMV6-AC-GFP (PS100010)
E. coli Selection:	Ampicillin (100 ug/mL)



[View online »](#)

ORF Nucleotide Sequence:

>RG228619 representing NM_001164749
 Red=Cloning site Blue=ORF Green=Tags(s)

TTTTGTAATACGACTCACTATAGGGCGGCCGGGAATTCGTCGACTGGATCCGGTACCGAGGAGATCTGCC
 GCC**CGGATCGCC**

ATGGCGCCACCAAGCCAGCTTTCAGCAGGATCCTTCCAGGCGAGAACGAATAACTGCCAGCATCCTC
 TGCCCAACCAATCAGAATGTAGGAAAATCTACAGATATGACGGAATCTACTGTGAATCTACCTACCGAA
 TTTACAAGCATTGAGAAAAGGAGAAATCCCGAGATGCTGCTCGCTCCCGCCGGGAAAAAGAAAACCTTGAG
 TTCTATGAATTGGCCAAGTTGTTGCCTCTTCTGCAGCCATTACCAGCCAGCTCGACAAGGCATCCATCA
 TTCGACTTACAATTAGCTATCTGAAAAAGAGGGACTTTGCTAACCAGGGGACCCCTCCGTGGAACTTGGC
 AATGGAAGGCCCTCCACCTAACACATCAGTAAAAGTTATAGGTGCACAGCGAAGGAGAAGCCCCAGTGCA
 CTAGCCATTGAAGTATTTGAAGCACATTTGGGAAGCCACATTTTGCAGTCCCTGGATGGCTTTGATTTG
 CACTAAATCAGGAAGGAAAATTTTGTACATTTCCGAAACAGTCTCCATCTACCTAGGCCTCTACAAGT
 GGAGCTGACAGGCAGCAGTGTCTTTGACTATGTCCACCCCGGAGATCACGTGGAGATGGCTGAGCAGCTG
 GGCATGAAGCTCCCCCTGGGCGGGTCTCCTGTACAGGGCACTGCTGAGGACGGAGCCAGCTCAGCAT
 TTCTCTCTCTCAGTCGGAGACCCCGAGCCAGTGGAGTCAACCAGCCCCAGTCTGCTAACCAGTACAA
 CACTCTTGAGCGTTCTTTTTCATCCGAATGAAATCTACTCTGACCAAACGCGGTGTGCACATCAAATCA
 TCAGGATATAAGGTGATTCACATAACAGGCCGGCTACGCTGAGAGTGTGCTGTCCCACGGGAGGACCG
 TCCCCAGCCAAATCATGGGTCTCGTGGTGTGGCGCATGCCTGCCTCCCCCTACGATCAATGAAGTCAG
 AATTGACTGCCATATGTTGCTCACTCGAGTAAATATGGACCTCAATATCATTACTGTGAAAATAGGATT
 AGTGATTATATGGATCTGACCCCTGTAGATATCGTAGGGAAGAGATGCTACCATTCAATCATGCTGAAG
 ACGTGGAGGGCATCAGGCACAGTCACTTGGACTGTGTAATAAGGGTCAGTGTGTGACAAAGTACTATCG
 CTGGATGCAGAAGAACGGAGGATATATTTGGATACAGTCCAGTGCACCATAGCTATTAATGCCAAGAAT
 GCAAATGAAAAGAATATCATCTGGTGAATTACCTTCTTGAATCCTGAGTACAAGGACACACCCATGG
 ACATCGCACAGCTCCCCATCTGCCGAGAAAACCTCCGAATCCTCGGAGACATCCGACTCTGAGTCAGA
 CTCTAAAGACACCTCAGGTATTACAGAGGACAACGAGAACTCCAAGTCCGACGAGAAGGGGAACAGTCC
 GAGAACAGCGAAGACCCGGAGCCGACCCGGAAGAAGTCCGGCAACGCGTGTGACAACGACATGAACTGCA
 ACGACGACGGCCACAGCTCCAGTAACCCGGACAGCCGCGACGCGACGACAGCTTCGAGCACTCGGACTT
 TGAGAACCCCAAGGCGGGCGAGGACGGCTTCGGTGTCTGGGCGCGATGCAGATCAAGGTGGAGCGCTAC
 GTGGAGAGCGAGTCGGACCTGCGGCTGCAGAACTGCGAGTCACTACGTCGACAGCGCCAGGACTCGG
 ACAGCGCAGGCGAGGCGGGCGCGCAGGCCCTCCAGCAAGCACGAAAGCGCAAGAAAAGGGCGAAACGGCA
 AAAGGGCGGCGAGCGCCAGCCGCGGGCGCCTGTCCAGCGCTCGAGCCAGGCGGCCCTGGACGCGGGCCTG
 GTGGAGCCCCCGGGCTGCTGTCTCCCCAACAGTGCCTCGGTGCTCAAGATCAAGACGGAGATCTCAG
 AACCCATCAATTCGACAATGACAGCAGCATCTGGAATACCCGCCAACCGGGAGATCTCCAGGAACGA
 GTCCCCCTACAGCATGACCAAGCCCCCAGCTCTGAGCACTTCCCGTCCCGCAGGGCGGGCGGGTGGG
 GGTGGCGGTGGCGGGGGGCTGCACGTGGCCATTCGGACTCGGTCTCACCCGCGGGCGGGCGGGTGGG
 CGGCCGCCGCAAGACTCAGTTCGGCGCCTCGGCCACCGCGGCCCTGGCCCCGTGCTCCGACCCGCT
 GTCACCCCGCTCTCGGCGTCCCGCGGGACAAGCACCCCGGAACGGCGGGGGCGGGGGCGGGGGC
 GCGGGCGGGGGGGCGGGCGGCCAGCGGTCCAACCTTGTGTACTGTTGGGACCTGGAGGCGCTGC
 AGAGGTTGCAGGCGGGCAACGTCGTGCTCCCGTGGTGCACAGGTGACCGGGACCTGGCCGCCACCAG
 CACGGCCGCGCAGAGGTCTACACCAGGGCACCATCCGCTACGCGCCCGCGAGGTGACCTGGCCATG
 CAGAGCAACCTGCTGCCAACGCGCAGCTGTTAACTTGTGGACGTTAACAGCCCCGGCTTTGGCCTCG
 ACCCAAGACGCCATGGAGATGCTCTACCACCAGTGCACCGGCTCAACATGTCAGGACCGTTCGGCGG
 CGCAGTGAGCGCAGTACCTGACGAGATGCCCGCGGCAACGTGTTACCACGGCCGAGGACTCTTC
 TCCAGCTGCCCTCCCCGTCTACAGCAACGGCATCCACGCGGCACAGACTCTGGAGCGCAAGGAGAC

AGCGGACCGACGCGTACGCGGCCGCTCGAG - GFP Tag - GTTTAA

Protein Sequence: >RG228619 representing NM_001164749
 Red=Cloning site Green=Tags(s)

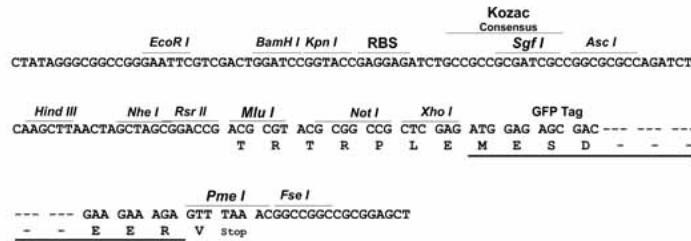
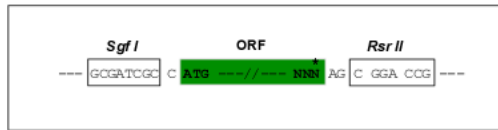
MAPTKPSFQQDPSRRRERITAQHPLPNQSECRKIYRYDGIYCESTYQNLQALRKEKSRDAARSRRGKENFE
 FYELAKLLPLPAAITSQLDKASIIRLTISYLKMRDFANQGDPPWNLRMGPPPTSVKVIQAQRRRSPSA
 LAIEVFEAHLGSHILQSLDGFVVALNQEKGFLYISETVSIYGLGLSQVELTGSSVFDYVHPGDHVEMAEQL
 GMKLPGRGLLSQGTAE DGASSASSSSQSETPPEVESTSPSLLTTDNTLERSFFIRMKSTLTKRGVHIKS
 SGYKVIHITGRLLRVLVSLSHGRTVPSQIMGLVVVAHALPPPTINEVRIDCHMFVTRVNMMDLNIYCNRI
 SDYMDLTPVDIVGKRCYHFIIHAEDVEGIRHSHLDLLNKGQCVTKYYRWMQKNGGYIWIQSSATIAINAKN
 ANEKNIWVNYLLSNPEYKDTMPMDIAQLPHLPEKTSSESTSDSESDSKDTSGITEDNENSKSDEKGNQS
 ENSEDPEPDRKKS GNACDNMNCNDDGHSSNPDSRSDSDFEHSDFENPKAGEDGFALGAMQIKVERY
 VESEDLRLQNCESLTS DSAKSDSAGEAGAQAASSKHQKRKRKRQKGGASRRRLSSASSPGLDAGL
 VEPRLSSPNSASVLKIKTEISEPINFNDSSIWNYPNREISRNE SPYSMTKPPSSEHFPSPQGGGGG
 GGGGGGLHVAIPDSVLTPPGADGAAARKTQFGASATAALAPVASDPLSPPLSASPRDKHPNGGGGGGGG
 GGAGGGPSASNSLLYTDLEALQRLQAGNVVLPVHRVTGTLAATSTAAQRVYTTGTIRYAPAEVTLAM
 QSNLLPNAHAVNFVDVNSPGFGLDPKTPMEMPLYHHVHRLNMSGPFGGAVSASLTPMPAGNVFTTAEGLF
 STLPFPVYSNGIHAQAQLTKERKED

SGPTRRRLE - GFP Tag - V

Restriction Sites: SgfI-RsrII

Cloning Scheme:

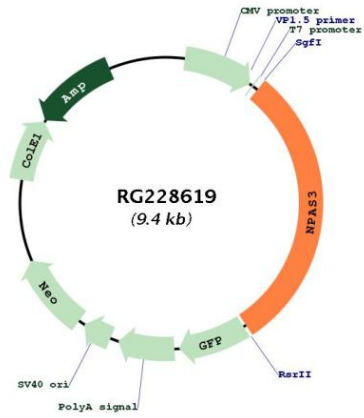
Cloning sites used for ORF Shuttling:



ACCN: NM_001164749

ORF Size:	2799 bp
OTI Disclaimer:	The molecular sequence of this clone aligns with the gene accession number as a point of reference only. However, individual transcript sequences of the same gene can differ through naturally occurring variations (e.g. polymorphisms), each with its own valid existence. This clone is substantially in agreement with the reference, but a complete review of all prevailing variants is recommended prior to use. More info
OTI Annotation:	This clone was engineered to express the complete ORF with an expression tag. Expression varies depending on the nature of the gene.
Components:	The ORF clone is ion-exchange column purified and shipped in a 2D barcoded Matrix tube containing 10ug of transfection-ready, dried plasmid DNA (reconstitute with 100 ul of water).
Reconstitution Method:	<ol style="list-style-type: none">1. Centrifuge at 5,000xg for 5min.2. Carefully open the tube and add 100ul of sterile water to dissolve the DNA.3. Close the tube and incubate for 10 minutes at room temperature.4. Briefly vortex the tube and then do a quick spin (less than 5000xg) to concentrate the liquid at the bottom.5. Store the suspended plasmid at -20°C. The DNA is stable for at least one year from date of shipping when stored at -20°C.
RefSeq:	NM_001164749.2
RefSeq Size:	5939 bp
RefSeq ORF:	2802 bp
Locus ID:	64067
UniProt ID:	Q8IXF0
Cytogenetics:	14q13.1
Protein Families:	Druggable Genome
Gene Summary:	This gene encodes a member of the basic helix-loop-helix and PAS domain-containing family of transcription factors. The encoded protein is localized to the nucleus and may regulate genes involved in neurogenesis. Chromosomal abnormalities that affect the coding potential of this gene are associated with schizophrenia and cognitive disability. Alternate splicing results in multiple transcript variants. [provided by RefSeq, Sep 2009]

Product images:



Circular map for RG228619