

Product datasheet for **RG228613**

NPAS3 (NM_001165893) Human Tagged ORF Clone

Product data:

| | |
|---------------------------|---|
| Product Type: | Expression Plasmids |
| Product Name: | NPAS3 (NM_001165893) Human Tagged ORF Clone |
| Tag: | TurboGFP |
| Symbol: | NPAS3 |
| Synonyms: | bHLHe12; MOP6; PASD6 |
| Mammalian Cell Selection: | Neomycin |
| Vector: | pCMV6-AC-GFP (PS100010) |
| E. coli Selection: | Ampicillin (100 ug/mL) |



[View online »](#)

ORF Nucleotide
Sequence:

>RG228613 representing NM_001165893
 Red=Cloning site Blue=ORF Green=Tags(s)

TTTTGTAATACGACTCACTATAGGGCGGCCGGGAATTCGTCGACTGGATCCGGTACCGAGGAGATCTGCC
 GCCCGCATCGCC

ATGGCGCCACCAAGCCAGCTTTCAGCAGGATCCTTCCAGGCGAGAACGTTTACAAGCATTGAGAAAGG
 AGAAATCCCGAGATGCTGCTCGCTCCCGCGGGGAAAAGAAAACCTTTGAGTTCTATGAATTGGCCAAGTT
 GTTGCCCTCTTCTGCAGCCATTACCAGCCAGCTCGACAAGGCATCCATCATTGACTTACAATTAGCTAT
 CTGAAAATGAGGGACTTTGCTAACCAGGGGGACCTCCGTGGAATTGCGAATGGAAGGCCCTCCACCTA
 ACACATCAGTAAAAGTTATAGGTGCACAGCGAAGGAGAAGCCCCAGTGCCTAGCCATTGAAGTATTTGA
 AGCACATTTGGGAAGCCACATTTTGCAGTCCCTGGATGGCTTTGTATTTGCACTAAATCAGGAAGGAAAA
 TTTTTGTACATTTCCGAAACAGTCTCCATCTACCTAGGCCCTCACAAGTGGAGCTGACAGGCAGCAGTG
 TCTTTGACTATGTCCACCCCGGAGATCACGTGGAGATGGCTGAGCAGCTGGGCATGAAGTCCCCCTGG
 GCGGGTCTCCTGTCACAGGGCACTGCTGAGGACGGAGCCAGCTCAGCATCTTCTCCTCTCAGTCGGAG
 ACCCCCGAGCCAGTGGAGTCAACCAGCCCCAGTCTGCTAACCCTGACAACACTTTGAGCGTTCCTTTT
 TCATCCGAATGAAATCTACTCTGACCAAACCGGTTGTCACATCAATATCAGGATATAAGGTGATTCA
 CATAACAGGCCGGCTACGCCTGAGAGTGTGCTGTCCCACGGGAGGACCGTCCCCAGCCAAATCATGGGT
 CTCGTGGTTGTTGCGCATGCCTTGCCCTCCCCCTACGATCAATGAAGTCAGAATTGACTGCCATATGTTG
 TCACTCGAGTAAATATGGACCTCAATATCATTTACTGTGAAAAAGGATTAGTGATTATATGGATCTGAC
 CCCTGTAGATATCGTAGGGAAGAGATGCTACCCTTCAATGCTGAAGACGTGGAGGGCATCAGGCAC
 AGTCACCTGGACTTGTGAATAAGGGTCAGTGTGTGACAAAGTACTATCGCTGGATGCAGAAGAACGGAG
 GATATATTTGGATACAGTCCAGTCCACCATAGCTATTAATGCCAAGAATGCAAAATGAAAAGAATATCAT
 CTGGGTGAATTACCTTCTTAGCAATCCTGAGTACAAGGACACACCCATGGACATCGCACAGCTCCCCAT
 CTGCCGGAGAAAACCTCCGAATCCTCGGAGACATCCGACTCTGAGTCAGACTCTAAAGACACCTCAGGTA
 TTACAGAGGACAACGAGAATCCAAAGTCCGACGAGAAGGGGAACCAAGTCCGAGAACAGCGAAGACCCGGA
 GCCCGACCGGAAGAAGTCCGGCAACCGGTGTGACAACGACATGAACTGCAACGACGACGGCCACAGCTCC
 AGTAACCCGACAGCCGACAGCGACGACAGCTTCGAGCACTCGGACTTTGAGAACCCCAAGCGGGCG
 AGGACGGCTTCGGTGTCTGGGCGCGATGCAGATCAAGGTGGAGCGCTACGTGGAGAGCGAGTCGGACCT
 GCGGCTGCAGAACTGCGAGTCACTCACGTCCGACAGCGCAAGGACTCGGACAGCGCAGGCGAGGGGGC
 GCGCAGGCTCCAGCAAGCACCAGAAGCGCAAGAAAAGCGGAAACGGCAAAAGGGCGGCGAGCGCCAGCC
 GCCGGCGCTGTCCAGCGCGTCCAGCCAGGCGGCTGGACGCGGGCCTGGTGGAGCCCCCGCGGCTGT
 GTCTCCCCAACAGTGCCTCGGTGCTCAAGATCAAGACGGAGATCTCAGAACCCATCAATTTGCAAT
 GACAGCAGCATCTGGAATACCCGCCAACCGGGAGATCTCCAGGAACGAGTCCCCCTACAGCATGACCA
 AGCCCCCAGCTCTGAGCACTTCCCGTCCCGCAGGGCGGCGGGTGGGGTGGCGGTGGCGGGGGGCT
 GCACGTGGCCATTCGACTCGGTCTCACCCCGCCGGCGCGGACGGCGCGGCGCCCGCAAGACTCAG
 TTCGGCGCTCGGCCACCGGGCCCTGGCCCCGTGCTCCGACCCGCTGTACCCCGCTCTCGGCGT
 CCCCAGCGGACAAGCACCCCGGAAACGGCGGGGGCGGGGGCGGGGGCGGGGGCGGGGGCGGGCGG
 CCCCAGCGGTCCAACCTCTTGTGTACTGGGACCTGGAGGCGCTGCAGAGTTGCAGCGGGCAAC
 GTCGTGCTCCCGTGGTGCACAGGGTGACCGGACCCTGGCCGCCACCAGCACGGCCGCGCAGAGGGTCT
 ACACCAGGGCACCATCCGCTACGCGCCCGCGAGGTGACCCTGGCCATGCAGAGCAACCTGCTGCCAA
 CGCGCACGCTGTTAACTTCGTGGACGTTAACAGCCCCGGCTTTGGCTCGACCCCAAGACGCCCATGGAG
 ATGCTCTACCACCAGTGCACCGGCTCAACATGTGAGGACCGTTCCGGCGGCGAGTGCAGCGAGTACCC
 TGACGAGATGCCCGCCGCAACGTGTTACCAGCGCGGAGGACTTTCTCCACGCTGCCCTCCCCGT
 CTACAGCAACGGCATCCACGCGCACAGACTCTGGAGCGCAAGGAGGAC

AGCGGACCGACGCTACGCGGCCGCTCGAG - GFP Tag - GTTTAA

Protein Sequence: >RG228613 representing NM_001165893
 Red=Cloning site Green=Tags(s)

MAPTKPSFQQDPSRRERLQALRKEKSRDAARSRRGKENFEFYELAKLLPLPAAITSQLDKASIIRLTISY
 LKMRDFANQGDPPWNLRMEGPPNNTSVKVIQAQRRRSPSALAIIEVFEAHLGSHILQSLDGFVFALNQEGK
 FLYISETVSIYLGLSQVELTGSSVFDYVHPGDHVEMAEQLGMKLP PGRGLLSQGT AEDGASSSSSQSE
 TPEPVESTSPSLLTTDNTLERSFFIRMKSTLTKRGVHIKSSGYKVIHITGRLRLRVSLSHGRTVPSQIMG
 LVVVAHALPPPTINEVRIDCHMFVTRVNM DLNIIYCENRISDYMDLTPVDIVGKRCYHF IHAEDVEGIRH
 SHLDLLNKGQCVTKYRWMQKNGGYIWIQSSATIAINAKNANEKNIWVNYLLSNPEYKDTMPMDIAQLPH
 LPEKTSESSETSDESSESKDTSGITEDNENSKSDEKGNQSENSEDPEDRKKSGNACDNDMNCNDDGHSS
 SNPDSRSDSDSFEHSDFENPKAGEDGFALGAMQIKVERYVESEDLRLQNCESL TSDSAKSDSAGEAG
 AQASSKHQKRKRKRQKGGASRRRLSSASSPGGLDAGLVEPPRL SSPNSASVLKIKTEISEPINFDN
 DSSIWNYPNREISRNE SPYSMTKPPSSEHFSPQGGGGGGGGGLHVAIPDSVLTPPGADGAAARKTQ
 FGASATAALAPVADPLSPPLSASPRDKHPNGGGGGGGGGAGGGGPSASNSLLYTGDLEALQRLQAGN
 VVLPLVHRVTGLAATSTAAQRVYTTGTIRYAPAEVTLAMQSNLLPNAHAVNFVDVNSPGFGLDPKTPME
 MLYHHVHRLNMSGPFGGAVSAASLTQMPAGNVFTTAEGLFSTLPPVYSNGIHAAQTLEKED

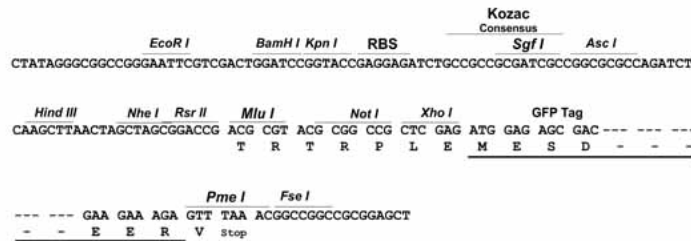
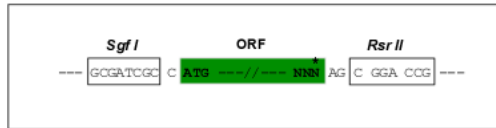
SGPTRRRLE - GFP Tag - V

Restriction Sites:

SgfI-RsrII

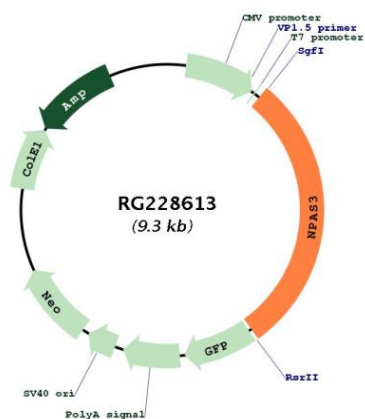
Cloning Scheme:

Cloning sites used for ORF Shuttling:



| | |
|-------------------------------|---|
| ACCN: | NM_001165893 |
| ORF Size: | 2709 bp |
| OTI Disclaimer: | The molecular sequence of this clone aligns with the gene accession number as a point of reference only. However, individual transcript sequences of the same gene can differ through naturally occurring variations (e.g. polymorphisms), each with its own valid existence. This clone is substantially in agreement with the reference, but a complete review of all prevailing variants is recommended prior to use. More info |
| OTI Annotation: | This clone was engineered to express the complete ORF with an expression tag. Expression varies depending on the nature of the gene. |
| Components: | The ORF clone is ion-exchange column purified and shipped in a 2D barcoded Matrix tube containing 10ug of transfection-ready, dried plasmid DNA (reconstitute with 100 ul of water). |
| Reconstitution Method: | <ol style="list-style-type: none">1. Centrifuge at 5,000xg for 5min.2. Carefully open the tube and add 100ul of sterile water to dissolve the DNA.3. Close the tube and incubate for 10 minutes at room temperature.4. Briefly vortex the tube and then do a quick spin (less than 5000xg) to concentrate the liquid at the bottom.5. Store the suspended plasmid at -20°C. The DNA is stable for at least one year from date of shipping when stored at -20°C. |
| RefSeq: | NM_001165893.2 |
| RefSeq Size: | 5849 bp |
| RefSeq ORF: | 2712 bp |
| Locus ID: | 64067 |
| UniProt ID: | Q8IXF0 |
| Cytogenetics: | 14q13.1 |
| Protein Families: | Druggable Genome |
| Gene Summary: | This gene encodes a member of the basic helix-loop-helix and PAS domain-containing family of transcription factors. The encoded protein is localized to the nucleus and may regulate genes involved in neurogenesis. Chromosomal abnormalities that affect the coding potential of this gene are associated with schizophrenia and cognitive disability. Alternate splicing results in multiple transcript variants. [provided by RefSeq, Sep 2009] |

Product images:



Circular map for RG228613