

Product datasheet for **RG228601**

BRD8 (NM_001164326) Human Tagged ORF Clone

Product data:

Product Type:	Expression Plasmids
Product Name:	BRD8 (NM_001164326) Human Tagged ORF Clone
Tag:	TurboGFP
Symbol:	BRD8
Synonyms:	p120; SMAP; SMAP2
Mammalian Cell Selection:	Neomycin
Vector:	pCMV6-AC-GFP (PS100010)
E. coli Selection:	Ampicillin (100 ug/mL)



[View online »](#)

ORF Nucleotide Sequence:

>RG228601 representing NM_001164326
 Red=Cloning site Blue=ORF Green=Tags(s)

TTTTGTAATACGACTCACTATAGGGCGGCCGGAATTCGTCGACTGGATCCGGTACCGAGGAGATCTGCC
 GCC**CGGATCGCC**

ATGGCGACGGGAACGGGCAACACAAGCTGCTAAGCACTGGCCCCACAGAGCCATGGTCCATCCGAGAGA
 AGCTATGTTTAGCATCTTCTGTCATGAGAAGTGGCGATCAAAAATTGGGTATCAGTTAGCAGAGCAATCAA
 GCCCTTTCGAGAACCTGGCCGCCCTCCAGACTGGTTCTCTCAAAAACATTGTGCTTCCAGTACTCGGAG
 CTTTTAGAGACCACTGAGACACCAAAACGAAACGAGGTGAAAAGGGAGAAGTGGTGAAACTGTTGAAG
 ATGTTATTGTTTCGAAATTGACTGCTGAGCGAGTTGAAGAACTAAAGAAAGTGATAAAGGAAACCCAGGA
 GAGATATAGACGGCTAAAGAGAGATGCAGAATAATTCAAGCTGGACACATGGACAGCAGACTGGATGAG
 CTTTGCAATGACATTGCAACGAAAAGAAATTGGAAGAAGAGGAGGCTGAAGTAAAGAGGAAGGCTACAG
 ATGCTGCATACCAGGCTCGTCAAGCAGTAAAAACACCCCCGGAGGTTACCCACTGTGATGGTTTCGCTC
 TCCTATAGATTCTGCCTCCCAGGAGGTGATTATCCACTTGGGGACTTGACTCCAACCACATGGAAGAG
 GCTACCTCTGGGGTAACCCCCGGGACTTTGCCGAGTACCCAGTACCTCGTTTCTGGGATTCCTGACA
 CCCTTCTCCAGGCTCTGCACCCTTAGAAGCCCCATGACCCAGTAAACAGATGATTACCCAGAAAAA
 GATGCTTGGACAGAAAGCAACTCCACCCCTCCCTCTGCTGTGAGAGCTTTGAAAGAGGGCAGCCCTC
 CTGCCTACTAGCCCAGACTGGTCAATGAGAGTGAAATGGCTGTGGCTTCTGGCCACCTGAACAGTACAG
 GTGTCTCTGGAGGTAGGCGGGGCTCTCCCATGATACATGGTGGGAGATACAGCAAACCCCAATAC
 TGTTGCAGCCTCCCCTGCTGCATCAGTGAGTCAACCCGACAACGTGTTCCCATGGAGGCTGTGGGGAT
 CCACATACTGTGACTGTTTCCATGGACAGCAGTAAATATCCATGATCATCAATTCTATCAAAGAAGAGT
 GTTTTCGATCAGGGGTAGCAGAGGCTCCTGTTGGATCAAAGGCTCCAGCATAGATGGGAAGGAAGT
 AGATCTGGCTGAGAAGATGGATATTGCTGTCTTACACAGGTGAAGAGCTGGATTTTGAGACTGTTGGA
 GACATCATTGCCATCATTGAGGACAAGGTAGATGATCCTGAAAGTGGTGGATGTGGCAGCAGTGAAG
 CAGCACTGCATTTTGTGAAGAAATGATGATCCTCAGTCCCTGCCTGGCCCTGGGAGCATCCTATCCA
 GCAGGAGCGGACAAGCCAGTACCTCTCCCTGCACCAGAAATGACGGTCAAGCAAGAGAGACTGGACTTT
 GAGGAAACGAAAACAAGGAATACATGAACTGGTGGACATCAGGGAGCCAGTGCAGAGATCAAGGTGG
 AACCTGCAGAACCAGAGCCAGTCAATTCAGGAGCCGAAATAGTAGCTGGAGTTGTTCCAGCCACAAGTAT
 GGAGCCACCAGAACTCAGGAGTCAAGACTTAGATGAGGAACTGGGAACTACTGCAGCTGGAGAGATTGTT
 GAAGCAGATGTTGCCATTGGGAAAGGCGATGAGACTCCACTTACAAATGTGAAGCAGAGGCATCCCCTG
 AAAGCATGTTGTCTCCATCACATGGCTCAAATCCATTGAAGATCCTTTAGAGGCAGAGACTCAGCACAA
 GTTTGAAATGTCAGACTCATTGAAAGAAGAAATCAGGGACTATTTTTGGAAGCCAGATAAAGGATGCCCA
 GGTGAGGATGAGGAGGAAGATGGTGTGAGTGAAGCGGCCAGCCTAGAGGAGCCTAAGGAAGAGGATCAAG
 GAGAAGGCTACTTGTGAGAAATGGATAATGAACCTCCTGTGAGCGAGAGTGTGATGGCTTCAGCATACA
 CAATGCTACACTGCAGTACACACACTGGCAGACTCCATCCCCAGCAGCCCTGCTTCTTACAGTTCTCT
 GTCTGTAGTGAGGATCAGGAAGCTATTCAGGCACAGAAAATTTGGAAGAAAGCCATCATGCTTGTATGGA
 GAGCTGCAGCTAATCATAGGTATGCCAATGTCTTCTGCAGCCTGTTACAGATGACATAGCACCTGGCTA
 CCACAGCATTGTGCAGAGGCCTATGGATTTGTCAACTATTAAGAAAAACATAGAAAAATGGACTGATCCGA
 AGCACAGCTGAATTTTCAGCGTGACATTATGCTGATGTTTCAGAATGCTGTAAATGTACAATAGCTCAGACC
 ATGATGTCTATCACATGGCAGTGGAGATGCAGCGAGATGTCTTGAACAGATCCAGCAATTTCTGGCCAC
 GCAGTTGATTATGCAAACATCCGAGTCTGGGATCAGTGCTAAAAGTCTTCGAGGGAGAGATTCTACCCGC
 AAACAGGATGCTTCAGAGAAGGATGGAGGAACAGGGGACCGCTGTGCCATTGAAGCAGATATGAAGA
 TGAAAAAG

ACGGTACGCGGCCGCTCGAG - GFP Tag - GTTTAA

Protein Sequence: >RG228601 representing NM_001164326
 Red=Cloning site Green=Tags(s)

MATGTGKHKLLSTGPTEPWSIREKLCLASSVMRSGDQNWVSVSRAIKPFAEPGRPPDWFSSQKHCASQYSE
 LLETTETPKRKRGEKGEVVETVEDVIVRKLTAERVEELKKVIKETQERYRRLKRDAELIQAGHMDSRLDE
 LCNDIATKKKLEEEAEVKRKATDAAYQARQAVKTPRRLPTVMVRSPIDSASPGGDYPLGDLTPTTMEE
 ATSGVTPGTLPSTPVSFPGIPDTLPPGSAPLEAPMTPVTDDSPQKMLGQKATPPPSPLLSELLKKGSL
 LPTSPRLVNESEMAVASGHLNSTGVLLLEVGGVLPMIHGGEIQQTNTVAASPAASVSQPDNCVPM EAVGD
 PHTVTVSMDSSSEISMIINSIKEECFRSGVAEAPVGSKAPSIDGKEELD LAEKMDIAVSYTGEELDFETVG
 DIIAIIEDKVDDHPEVLDVAAVEAALSFCEENDDPQSLPGWEHPIQQRDKPVPLPAPEMTVKQERLDF
 EETENKGIHELVDIREPSAEIKVEPAEPEPVISGAEIVAGVVPATSMPELRSQDLDEELGSTAAGEIV
 EADVAIGKDETPLTNVTEASPESMLSPSHGNSPIEDPLEAETQHKFEMSDSLKEESGTFGSIKIDAP
 GEDEEEDGVSEAAASLEEKEDQGEGLSEMDNEPPVSEDDGFSIHNATLQSHTLADSISSPASSQFS
 VCSEDQEA IQAQKIWKKAIMLVWRAAANHRYANVFLQPVTDDIAPGYHSIVQRPMDLSTIKKNIENGLIR
 STAEFQRDIMLFQNAVMYNSSDHDVYHMAVEMQRDVLEQIQFLATQLIMQTSSESGISAKSLRGRDSTR
 KQDASEKDGGTRRRCAIEADMKMKK

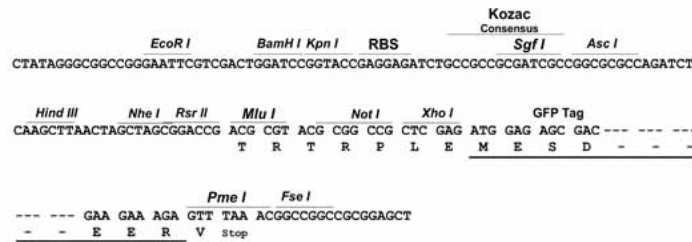
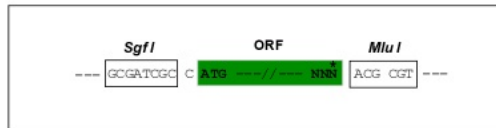
TRTRPLE - GFP Tag - V

Restriction Sites:

Sgfl-MluI

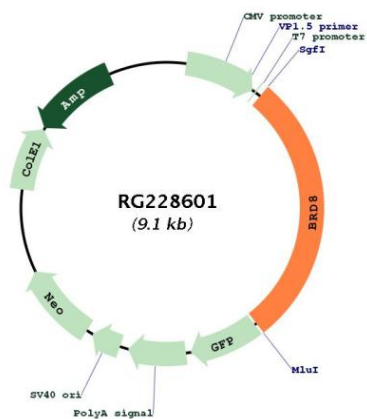
Cloning Scheme:

Cloning sites used for ORF Shuttling:



ACCN:	NM_001164326
ORF Size:	2598 bp
OTI Disclaimer:	The molecular sequence of this clone aligns with the gene accession number as a point of reference only. However, individual transcript sequences of the same gene can differ through naturally occurring variations (e.g. polymorphisms), each with its own valid existence. This clone is substantially in agreement with the reference, but a complete review of all prevailing variants is recommended prior to use. More info
OTI Annotation:	This clone was engineered to express the complete ORF with an expression tag. Expression varies depending on the nature of the gene.
Components:	The ORF clone is ion-exchange column purified and shipped in a 2D barcoded Matrix tube containing 10ug of transfection-ready, dried plasmid DNA (reconstitute with 100 ul of water).
Reconstitution Method:	<ol style="list-style-type: none">1. Centrifuge at 5,000xg for 5min.2. Carefully open the tube and add 100ul of sterile water to dissolve the DNA.3. Close the tube and incubate for 10 minutes at room temperature.4. Briefly vortex the tube and then do a quick spin (less than 5000xg) to concentrate the liquid at the bottom.5. Store the suspended plasmid at -20°C. The DNA is stable for at least one year from date of shipping when stored at -20°C.
RefSeq:	NM_001164326.1 , NP_001157798.1
RefSeq Size:	2998 bp
RefSeq ORF:	2601 bp
Locus ID:	10902
UniProt ID:	Q9H0E9
Cytogenetics:	5q31.2
Protein Families:	Druggable Genome, Transcription Factors
Gene Summary:	The protein encoded by this gene interacts with thyroid hormone receptor in a ligand-dependent manner and enhances thyroid hormone-dependent activation from thyroid response elements. This protein contains a bromodomain and is thought to be a nuclear receptor coactivator. Multiple alternatively spliced transcript variants that encode distinct isoforms have been identified. [provided by RefSeq, Jul 2014]

Product images:



Circular map for RG228601