

Product datasheet for **RG228600**

EPB41 (NM_001166005) Human Tagged ORF Clone

Product data:

Product Type:	Expression Plasmids
Product Name:	EPB41 (NM_001166005) Human Tagged ORF Clone
Tag:	TurboGFP
Symbol:	EPB41
Synonyms:	4.1R; EL1; HE
Mammalian Cell Selection:	Neomycin
Vector:	pCMV6-AC-GFP (PS100010)
E. coli Selection:	Ampicillin (100 ug/mL)



[View online »](#)

**ORF Nucleotide
Sequence:**

>RG228600 representing NM_001166005
 Red=Cloning site Blue=ORF Green=Tags(s)

TTTTGTAATACGACTCACTATAGGGCGGCCGGAATTCGTCGACTGGATCCGGTACCGAGGAGATCTGCC
 GCC**CGGATCGCC**

ATGACAACAGAGAAGAGTTTAGTGACTGAGGCCGAAAATTCACAGCACCAACAGAAGGAAGAGGGTGAGG
 AAGCCATAAACTCAGGCCAAAGAACCTCAGCAGGAGGAATCTTGTCAAACAGCAGCTGAAGGAGATAA
 TTGGTGTGAACAGAAGCTGAAAGCTTCTAATGGAGACTCTACACATGAAGACTTGACCAAGAACAAG
 GAGCGGACATCAGAAAGCAGAGGACTTTACGACTATTCTCCTCGTTTCTCAAAGGCCAAATCTCAGG
 TGTCCGAGGAAGAAGGCCAAAGAAGTAGAGTCAGATAAAGAAAAAGGTGAAGGAGGTCAGAAAAGAGATAGA
 ATTTGGAACAGTCTTGATGAAGAGATCATTTAAAGGCCCAATTGCAGCTCCTGAACCGAACTCAA
 ACAGACCCATCTTTGGATCTTCATTCATTAAGCAGTGCAGAAACACAGCCTGCTCAGGAAGAACTCAGAG
 AAGATCCAGATTTTGAATTAAGGAAGGAGAAGGACTTGAAGAGTCTCCAAAATAGAAGTAAAAGAAGA
 AAGCCCTCAATCAAAGCAGAAACAGAATTAAGAGCTTCCAAAAACCAATCAGAAAACACAGGAACATG
 CACTGCAAGGTTTCTTTGTTGGATGACACAGTTTATGAATGTGTTGTGGAGAAAACATGCTAAGGGACAAG
 ATTTGCTTAAACGAGTATGTGAGCATCTCAATCTTTTGAAGAAGACTATTTTGGTCTAGCCATTTGGGA
 TAACGCAACCTCTAAGACATGGCTGGATTCCGCCAAAGAAATAAAAAAGCAGGTTCTGTGGTGCCTTTGG
 AATTTTACATTTAATGTAAGTTTTATCCACCTGACCCAGCACAGTTAACAGAAGACATAACAAGATATT
 ATTTATGTCTTCAGCTTCGGCAGGACATAGTTGCAGGACGCTGCCCTGTTCTTTGCAACCTTAGCATT
 ATTAGGTTCTTACACCATCCAGTCTGAAGTGGGAGACTACGACCCAGAAGTCCATGGCGTGGATTATGTT
 AGTGATTTTAACTGGCCCCGAATCAGACCAAGGAAGTGAAGAGAAGGTCATGGAAGTGCATGATGATGG
 ACAGGTCATGACTCCAGCTCAGGCTGACTTGGAGTTTCTTGAGAATGCCAAAAGTTGCTATGTATGG
 AGTTGATCTTCAAAAGCAAAGGACTTGAAGGAGTAGATATCCTAGGTGCTGCTCTAGTGGCCTT
 CTGGTTTACAAAGATAAGCTGAGAATTAACCGCTTCCCTTGGCCCAAAGTCTGAAGATTTCTTATAAAC
 GTAGTAGCTTTTTATCAAGATTCGGCCTGGAGAGCAAGAGCAGTATGAAAGTACCATCGGATTCAAACT
 TCCAGTTACCGAGCAGCTAAGAAATTATGAAAGTCTGTGTAGAATCAGACGTTTTTTCAGATTGACA
 TCTACAGACACCATCCCAAAGCAAATTTCTGCGCTAGGATCCAAATTTTCGATACAGTGGCCGGACTC
 AAGCTCAGACCAGGCAAGCTAGTCTAATTGACAGGCTGCCACACTTCGAGCGTACAGCAAGTAA
 ACGGGCGTCCCGAGCCTCGATGGAGCAGCAGTGTGATTCCGGCAGACCGAAGTCTCGGCCACTTCT
 GCACCTGCCATTACTCAGGGTCAAGTGCAGAGGTGGCGTCTAGATGCCTCTGCTAAAAAACAGTGG
 TCCCTAAAGCACAGAAGGAAACAGTGAAGGCTGAAGTGAAGGAAAGACGAGCCACCTGAGCAAGCTGA
 GCCAGAGCCACAGAAGCATGGAAGGTGGAAGAAACCCACATCGAGGTGACAGTACCCACCTCAAATGGT
 GACCAACACAGAAGCTTGCAAGAAAAACTGAAGATCTGATAAGAATGAGGAAGAAAAAGAGAGAAAGAC
 TAGATGGTGAAAACATTTATATCAGACATAGCAATTTAATGTTGGAGGATTTAGACAAGAGTCAAGAGGA
 GATCAAAAAACATCATGCCAGCATCAGTGAAGTGAAGGAACTCATGGAGTCTGTACCAGAACCACGG
 CCTAGTGAATGGGATAAACGCTTATCCACTCACTACCCCTCCGAAGTCTTAACATCAATGGGCAATCC
 CCACAGGAGAAGGACCTCCCTGGTGAAGACACAACTGTCAACATCTCAGATAATGCCAATGCTGTGAA
 AAGTGAATCCCAACAAAGACGTCCTATTGTCCACACTGAGACCAAGACCACACTTATGAGGCTGCC
 CAGACTGACGACAAACAGTGGAGACTTGGACCCAGGAGTCTTGTGACAGCTCAAACATACATCTGAGA
 CCCAAGCAGCACCACCAACTCAAATACCAAGACTGTAAAAGGTGGGATTTAGAGACACGATTGGA
 AAAGAGAATTGTGATCACAGGAGATGCTGATATTGACCATGATCAGGTCCTTGTACAAGCCATCAAGGAG
 GCAAAGGAGCAGCACCACAGCATGTCAGTGACCAAGGTGGTCCACCAGGAGACCGAGATTGCTGATG
 AG

ACGCGTACGCGGCCGCTCGAG – GFP Tag – GTTTAA

Protein Sequence: >RG228600 representing NM_001166005
 Red=Cloning site Green=Tags(s)

MTTEKSLVTEAENSQHQQKEEGEEAINSGQQEPQQEESCQTAAEGDNWCEQKLKASNGDTPHEDLTKNK
 ERTSESRLSRLFSSFLKRPKSQVSEEEGKEVESDKKEGEGGQKEIEFGTSLDEEII LKAPIAAPEPELK
 TDPSLDLHSLSSAETQPAQEELREDPDFEIKEGEGLEECSKIEVKEESPQSKAETELKASQKPIRKHRNM
 HCKVSLLDLDTVYECVVEKHAKGQDLLKRVCEHLNLL EEDYFGLAIWDNATSKTWLDSAKEIKKQVRGVPW
 NFTFNVKFYPPDPAQLTEDITRYYLCLQLRQDIVAGRLPCSFATLALLGSYTIQSELGDYDPELHGVDYV
 SDFKLAPNQTKELEEKVMELHKSYSRMTPAQADLEFLENAKKLSMYGVDLHKAKDLEGVDIILGVCSSGL
 LVYKDKLRINRFPWPKVLKISYKRSSFFIKIRPGEQEYESTIGFKLPSYRAAKKLWKCVEHHTFFRLT
 STDTIPKSKFLALGSKFRYSGRQAQTRQASALIDRPAPHFERTASKRASRLDGA AAVDSADRSPRPTS
 APAITQGQVAEGVLDASAKKTVVPAQKETVKA EVKKEDEPPEQAEPEPTAEAWKVEKTHIEVTVPTSNG
 DQTQKLAEKTEDLIRMRKKRERLDGENIYIRHSNLMLEDL DKSQEEIKKHHASISELKNFMESVPEPR
 PSEWDKRLSTHSPFRTLNINGQIPTGEGPPLVKTQTVTISDNANAVKSEIPTKDVPVHTETKTIITYEAA
 QTDDNSGDLDPGVLLTAQTITSETPSSTTTTQITKTVKGGISETRIEKRIVITGDADIDHDQVLVQAIKE
 AKEQHPDMSVTKVVVHQETEIADE

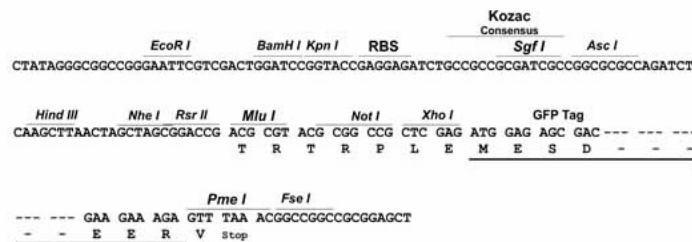
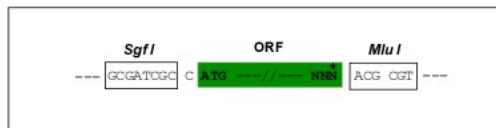
TRTRPLE - GFP Tag - V

Restriction Sites:

SgfI-MluI

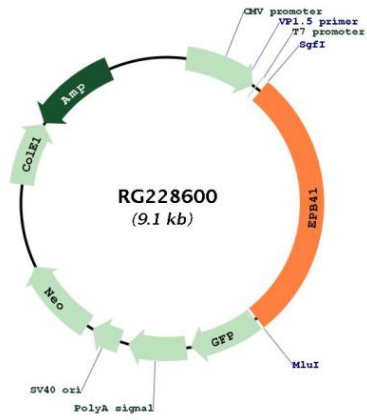
Cloning Scheme:

Cloning sites used for ORF Shuttling:



ACCN:	NM_001166005
ORF Size:	2592 bp
OTI Disclaimer:	The molecular sequence of this clone aligns with the gene accession number as a point of reference only. However, individual transcript sequences of the same gene can differ through naturally occurring variations (e.g. polymorphisms), each with its own valid existence. This clone is substantially in agreement with the reference, but a complete review of all prevailing variants is recommended prior to use. More info
OTI Annotation:	This clone was engineered to express the complete ORF with an expression tag. Expression varies depending on the nature of the gene.
Components:	The ORF clone is ion-exchange column purified and shipped in a 2D barcoded Matrix tube containing 10ug of transfection-ready, dried plasmid DNA (reconstitute with 100 ul of water).
Reconstitution Method:	<ol style="list-style-type: none">1. Centrifuge at 5,000xg for 5min.2. Carefully open the tube and add 100ul of sterile water to dissolve the DNA.3. Close the tube and incubate for 10 minutes at room temperature.4. Briefly vortex the tube and then do a quick spin (less than 5000xg) to concentrate the liquid at the bottom.5. Store the suspended plasmid at -20°C. The DNA is stable for at least one year from date of shipping when stored at -20°C.
RefSeq:	NM_001166005.2
RefSeq Size:	5961 bp
RefSeq ORF:	2595 bp
Locus ID:	2035
UniProt ID:	P11171
Cytogenetics:	1p35.3
Protein Families:	Druggable Genome
Protein Pathways:	Tight junction
Gene Summary:	The protein encoded by this gene, together with spectrin and actin, constitute the red cell membrane cytoskeletal network. This complex plays a critical role in erythrocyte shape and deformability. Mutations in this gene are associated with type 1 elliptocytosis (EL1). Alternatively spliced transcript variants encoding different isoforms have been described for this gene.[provided by RefSeq, Oct 2009]

Product images:



Circular map for RG228600