

## Product datasheet for **RG228589**

### ABR (NM\_001159746) Human Tagged ORF Clone

#### Product data:

Product Type:	Expression Plasmids
Product Name:	ABR (NM_001159746) Human Tagged ORF Clone
Tag:	TurboGFP
Symbol:	ABR
Synonyms:	MDB
Mammalian Cell Selection:	Neomycin
Vector:	pCMV6-AC-GFP (PS100010)
E. coli Selection:	Ampicillin (100 ug/mL)



[View online »](#)

**ORF Nucleotide Sequence:**

>RG228589 representing NM\_001159746  
 Red=Cloning site Blue=ORF Green=Tags(s)

TTTTGTAATACGACTCACTATAGGGCGGCCGGAATTCGTCGACTGGATCCGGTACCGAGGAGATCTGCC  
 GCC**CGGATCGCC**

ATGCCGTACATCGATGAGTCGCCACCATGTCCCGCAGCTCAGCGCCCGCAGCCAGGGCGGGGGGATG  
 GGGTCTCCCGACTCCACCTGAGGGACTGGCTCCTGGGGTGAAGCAGGAAAGGCCTGGAGATGAGGAA  
 GCTGGTTCTCTCGGGTTCTTGGCCAGCGAAGAGATCTACATTAACCAAGCTGGAAGCCCTGTTGCTGCC  
 ATGAAACCCCTGAAGGCCACCGCCACCCTCCAGCCCGTGCTCACCATCCAGCAGATCGAGACCATCT  
 TCTACAAGATCCAGGACATCTATGAGATCCACAAGGAGTTCTATGACAACCTGTGCCCAAGGTGCAACA  
 GTGGGACAGCCAGGTACCATGGCCACCTCTCCAGAAGCTGGCCAGCCAGCTCGGTGTGTACAAAGCG  
 TTTGTCGATAAATAAAGTCGCTCTGGAGACAGCTGAGAAGTGCAGCCAGTCCAACAACCAGTTCCAGA  
 AGATCTCAGAGGAACCAAAGTAAAGGTCCCAAGGACTCAAGGACAGCCACACGTCTGTACCATGGA  
 AGCTCTGTCTACAAGCCATTGACCGGTCACTCGGAGCACCTAGTCTACACGACCTGCTGAAGCAC  
 ACACCTGTGGACCACCCGACTACCCGCTGCTGCAAGGATGCCCTCCGCATCTCCAGAACTTCTGTCCA  
 GCATCAACGAGGACATCGACCCCGCCGACTGCAGTGACAACGCCCAAGGGGGAGACGCCGACAGCTGGT  
 GAAGGACGGCTTCTGGTGAAGTGTGAGAGAGCTCCCGAAGCTGCGGCACGTCTTCTTTACAGAT  
 GTCCTACTGTGTGCCAAGCTGAAGAAGACCTCTGCAGGGAAGCACCAGCAGTATGACTGTAAGTGGTACA  
 TCCCCCTGGCCGACCTGGTGTTCATCCCCGAGGAGTCTGAGGCCAGCCCCAGGTGCACCCCTTCCC  
 AGACCATGAGCTGGAGGACATGAAGATGAAGATCTTCCCTCAAGAGTGAATCCAGAAGGAGAAAAGCC  
 AACAAAGGCCAGAGCCGGGCCATCGAGCGCTGAAGAAGAAGATGTTGAGAATGAGTTCCTGCTGCTC  
 TCAACTCCCCACAATCCCGTTCAGGATCCACAATCGAATGAAAGAGTTACCTGTTCTACTGCTCTC  
 GGACTACGAGAGGTCAGAGTGGAGAGAAGCAATTCAGAACTACAGAAGAAGGATCTCCAGGCCTTGTG  
 CTGAGCTCAGTGGAGCTCCAGGTGCTCACAGGATCCTGTTTCAAGCTTAGGACTGTACACAACATTCCTG  
 TCACCAGCAATAAAGACGACGATGAGTCTCCAGGACTCTATGGCTTCTTTCATGTCATCGTCCACTCTGC  
 CAAGGGATTTAAGCAATCAGCCAACCTGTACTGTACCCTGGAGGTGGATTCTTCGGCTATTTTGCAGC  
 AAAGCCAAAACCAGGGTGTTCGGGACACAGCGGAGCCCAAGTGGGATGAGGAGTTTGGATCGAGCTGG  
 AGGGCTCCAGTCCCTGAGGATCCTGTGCTATGAGAAGTGTATGACAAGACCAAGGTCAACAAGGACAA  
 CAATGAGATCGTGGACAAGATCATGGGCAAGGACAGATCCAGCTGGACCCACAAACCGTGGAGACCAAG  
 AACTGGCACACGGACGTGATTGAGATGAACGGGATCAAAGTGAATTTTCCATGAAATTCACCAGCCGAG  
 ATATGAGCCTGAAGAGGACCCCGTCCAAAAGCAGACCGCGTCTTCGGTGTGAAGATCAGCGTGGTGAC  
 GAAGCGGGAGCGCTCAAGGTGCCCTACATCGTCCGGCAGTGTGTGGAGGAGGTGGAGAAGAGGGGTATC  
 GAGGAGTTGGCATCTACAGGATATCGGGCGTGGCCACGGACATCCAGGCGCTCAAGGCCGCTTTCGATG  
 CCAATAACAAGGACATCCTGCTGATGCTGAGTGACATGGACATCAACGCCATCGCCGGGACGCTCAAGCT  
 GTACTTCCGGAACTGCCCGAGCCGCTCCTCACGGACCGACTCTACCCAGCCTTCATGGAGGGCATCGCC  
 CTGTCAGACCTGCTGCCAAGGAAAAGTGCATGATGCACCTGCTCCGCTCCCTGCCCGACCCCAACCTCA  
 TCACCTTCTCTCTGCTGGAACACTTGAAAAGGGTTGCCGAGAAGGAGCCCATCAACAAAATGTCACT  
 TCACAACCTGGCTACCGTGTGGACCCACGTTACTGAGACCTCAGAAGTGGAGAGCAAAGCACACCTC  
 ACCTCGGCTGCGGACATCTGGTCCATGACGTATGGCGCAGGTCCAGGTCTCCTCTACTACTGTCAGC  
 ACCCCCCATTTCTTCGCAAGTCAAGCGGAACACACTGTAATTCTCCACCGACGTG

**ACGCGT**ACGCGGCCGCTCGAG - GFP Tag - GTTTAA

Protein Sequence: >RG228589 representing NM\_001159746  
Red=Cloning site Green=Tags(s)

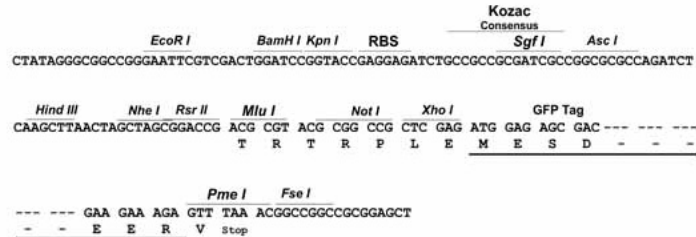
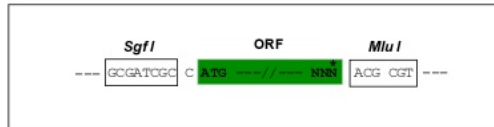
```
MPYIDESPTMSPQLSARSQGGDGVSPPTPEGLAPGVEAGKGLEMRKLVLSGFLASEEIIYINQLEALLLP
MKPLKATATTSQPVLTIQQIETIFYKIQDIYIEIHKEFYDNLCPKVQQWDSQVTMGHLFQKLASQLGVYKA
FVDNYKVALETAEKCSQSNNQFQKISEELKVKGPKDSKDSHTSVTMEALLYKPIDRVTRSTLVLDLLKH
TPVDHPDYPLLQDALRISQNFLLSSINEDIDPRRTAVTTPKGETRQLVKDGFLEVESESSRKL RHVFLFTD
VLLCAKLKKTSAKGHQYDCKWYIPLADLVFPSPPEEASESPQVHPFPDHELEDMMKISALKSEIQKEKA
NKGQSRAIERLKKMFENEFLLLNSPTIPFRIHNRNGKSYLFLSSDYERSEWREAIQKLQKKDLQAFV
LSSVELQVLTGSCFKLRTVHNIPVTSNKDDDESPGLYGFLHVIHSAKGFQSANLYCTLEVDSFGYFVS
KAKTRVFRDTAEPKWDEEFEIELEGSQSLRILCYEKYDKTKVKNKDNEIVDKIMGGQIQLDPQTVETK
NWHTDVIEMNGIKVEFSMKFTSRDMSLKRTPSKKQTVGFVGVKISVVTKRERSKVPYIVRQCVEEVEKRG
EEVGIYRISGVATDIQALKAVFDANNKDILLMLSDMDINAIAGTLKLYFRELPDLLTDRLYPAFMEGIA
LSDPAAKENCMMHLLRSLPDPNLITFLFLEHLKRVAEKEPINKMSLHNLATVFGPTLLRPSEVESKAHL
TSAADIWSDVMAQVQVLLYYLQHPPISFAELKRNTLYFSTDV
```

TRTRPLE - GFP Tag - V

Restriction Sites: Sgfl-MluI

**Cloning Scheme:**

Cloning sites used for ORF Shutting:



- ACCN:** NM\_001159746
- ORF Size:** 2439 bp
- OTI Disclaimer:** The molecular sequence of this clone aligns with the gene accession number as a point of reference only. However, individual transcript sequences of the same gene can differ through naturally occurring variations (e.g. polymorphisms), each with its own valid existence. This clone is substantially in agreement with the reference, but a complete review of all prevailing variants is recommended prior to use. [More info](#)
- OTI Annotation:** This clone was engineered to express the complete ORF with an expression tag. Expression varies depending on the nature of the gene.
- Components:** The ORF clone is ion-exchange column purified and shipped in a 2D barcoded Matrix tube containing 10ug of transfection-ready, dried plasmid DNA (reconstitute with 100 ul of water).

**Reconstitution Method:**

1. Centrifuge at 5,000xg for 5min.
2. Carefully open the tube and add 100ul of sterile water to dissolve the DNA.
3. Close the tube and incubate for 10 minutes at room temperature.
4. Briefly vortex the tube and then do a quick spin (less than 5000xg) to concentrate the liquid at the bottom.
5. Store the suspended plasmid at -20°C. The DNA is stable for at least one year from date of shipping when stored at -20°C.

**RefSeq:** [NM\\_001159746.3](#)

**RefSeq Size:** 5610 bp

**RefSeq ORF:** 2442 bp

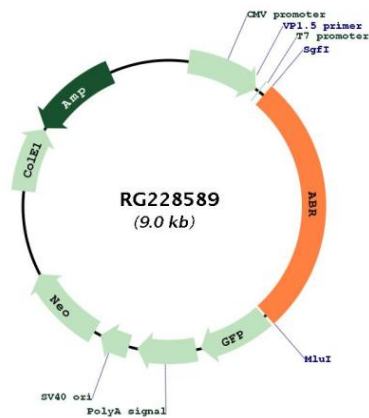
**Locus ID:** 29

**UniProt ID:** [Q12979](#)

**Cytogenetics:** 17p13.3

**Gene Summary:** This gene encodes a protein that is similar to the protein encoded by the breakpoint cluster region gene located on chromosome 22. The protein encoded by this gene contains a GTPase-activating protein domain, a domain found in members of the Rho family of GTP-binding proteins. Functional studies in mice determined that this protein plays a role in vestibular morphogenesis. Alternatively spliced transcript variants have been reported for this gene. [provided by RefSeq, Feb 2012]

### Product images:



Circular map for RG228589