

## Product datasheet for **RG228586**

### **FGFR3 (NM\_001163213) Human Tagged ORF Clone**

#### **Product data:**

Product Type:	Expression Plasmids
Product Name:	FGFR3 (NM_001163213) Human Tagged ORF Clone
Tag:	TurboGFP
Symbol:	FGFR3
Synonyms:	ACH; CD333; CEK2; HSGFR3EX; JTK4
Mammalian Cell Selection:	Neomycin
Vector:	pCMV6-AC-GFP (PS100010)
E. coli Selection:	Ampicillin (100 ug/mL)



[View online »](#)

**ORF Nucleotide Sequence:**

>RG228586 representing NM\_001163213  
 Red=Cloning site Blue=ORF Green=Tags(s)

TTTTGTAATACGACTCACTATAGGGCGGCCGGGAATTCGTCGACTGGATCCGGTACCGAGGAGATCTGCC  
 GCC**CGGATCGCC**

ATGGGCGCCCTGCCTGCGCCCTCGCGCTCTCGTGGCCGTGGCCATCGTGGCCGGCGCCTCCTCGGAGT  
 CCTTGGGACGGAGCAGCGCGTCTGGGGCAGCGGCAGAAAGTCCCGGGCCAGAGCCCGCCAGCAGGA  
 GCAGTTGGTCTTCGGCAGCGGGGATGCTGTGGAGCTGAGCTGTCCCGCCCGGGGGTGGTCCCATGGGG  
 CCCACTGTCTGGGTCAAGGATGGCACAGGGCTGGTGCCTCGGAGCGTGTCTGGTGGGGCCCCAGCGGC  
 TGCAGGTGCTGAATGCCTCCACGAGGACTCCGGGCCTACAGCTGCCGGCAGCGGCTCACGACGCGCT  
 ACTGTGCCACTTCAGTGTGCGGGTGACAGACGCTCCATCCTCGGGAGATGACGAAGACGGGGAGGACGAG  
 GCTGAGGACACAGGTGTGGACACAGGGGCCCTTACTGGACACGGCCGAGCGGATGGACAAGAAGCTGC  
 TGGCCGTGCCGGCCCAACACCGTCCGCTTCCGCTGCCAGCCGCTGGCAACCCCACTCCCTCCATCTC  
 CTGGCTGAAGAACGGCAGGGAGTCCGCGGCGAGCACCGCATTGGAGGCATCAAGCTGCGGCATCAGCAG  
 TGGAGCCTGGTCAATGAAAGCGTGGTGCCTCGGACCGCGCAACTACACCTGCGTGGTGGAGAACAAGT  
 TTGGCAGCATCCGGCAGACGTACACGCTGGACGTGCTGGAGCGCTCCCGCACCGGCCATCCTGCAGGC  
 GGGGCTGCCGGCAACCAGACGGCGGTGCTGGGCAGCGACGTGGAGTTCCACTGCAAGGTGTACAGTGAC  
 GCACAGCCCACATCCAGTGGTCAAGCACGTGGAGGTGAATGGCAGCAAGTGGGCCGGACGGCACAC  
 CCTACGTTACCGTGTCAAGTCTGGATCAGTGAAGTGTGGAGGCCGACGTGCGCTCCGCTGGCCAA  
 TGTGTGGAGCGGGACGGGGCGGAGTACCTCTGTGAGCCACCAATTTTCATAGGCGTGGCCGAGAAGGCC  
 TTTTGGCTGAGCGTTACGGGCCCGGAGCAGCCGAGGAGGAGCTGGTGGAGGCTGACGAGCGGGCAGTG  
 TGTATGCAGGCATCCTCAGTACGGGGTGGCTTCTTCTGTTATCCTGGTGGTGGCGGCTGTGAGGCT  
 CTGCCGCTGCGCAGCCCCCAAGAAAGGCCTGGGCTCCCCACCGTGCACAAGATCTCCGCTTCCCG  
 CTCAAGCGACAGGTGTCCTGGAGTCCAACGCGTCCATGAGCTCCAACACACCACTGGTGCATCGCAA  
 GGCTGTCTCAGGGGAGGGCCCCACGCTGGCCAATGTCTCCGAGCTCGAGCTGCCTGCCACCCCAATG  
 GGAGCTGTCTCGGGCCCGGTGACCCTGGGCAAGCCCCTTGGGGAGGGCTGCTTCGGCCAGGTGGTCATG  
 GCGGAGGCCATCGGCATTGACAAGGACCGGGCCCAAGCCTGTACCGTAGCCGTGAAGATGCTGAAAG  
 ACGATGCCACTGACAAGGACCTGTCGGACCTGGTGTCTGAGATGGAGATGATGAAGATGATCGGAAACA  
 CAAAAACATCATCAACCTGCTGGGCGCTGCACGACGGGCGGGCCCTGTACGTGCTGGTGGAGTACGG  
 GCCAAGGGTAACCTGCGGGAGTTTCTGCGGGCGGGCGGCCCCCGGGCCTGGACTACTCCTTCGACACCT  
 GCAAGCCGCCGAGGAGCAGCTACCTTCAAGGACCTGGTGTCTGTGCCTACCAGGTGGCCCGGGCAT  
 GGAGTACTTGGCCTCCAGAAAGTGCATCCACAGGGACCTGGCTGCCCGCAATGTGCTGGTACCGAGGAC  
 AACGTGATGAAGATCGCAGACTTCGGGTGGCCCGGGACGTGCACAACCTCGACTACTACAAGAAGACAA  
 CCAACGGCCGGCTGCCCGTGAAGTGGATGGCGCCTGAGGCCTGTGTTGACCGAGTCTACACTCACCAGAG  
 TGACGTCTGGTCTTTGGGGTCTGCTCTGGGAGATCTTACGCTGGGGGGCTCCCGTACCCCGGCATC  
 CCTGTGGAGGAGCTCTTCAAGCTGCTGAAGGAGGGCCACCGCATGGACAAGCCCGCAACTGCACACAG  
 ACCTGTACATGATCATGCGGGAGTGTGGCATGCCGCGCCCTCCAGAGGCCACCTTCAAGCAGCTGGT  
 GGAGGACCTGGACCGTGTCTTACCGTACGCTCCACCGACGAGTACCTGGACCTGTCGGCGCCTTCGAG  
 CAGTACTCCCCGGGTGGCCAGGACACCCAGCTCCAGCTCCTCAGGGGACGACTCCGTGTTGCCACAG  
 ACCTGCTGCCCCGGCCCAACCAGCAGTGGGGCTCGCGGACG

AC**CGGCCGCT**CGAG – GFP Tag – GTTTAA

**Protein Sequence:** >RG228586 representing NM\_001163213  
 Red=Cloning site Green=Tags(s)

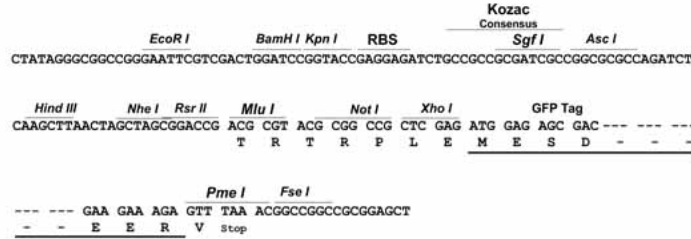
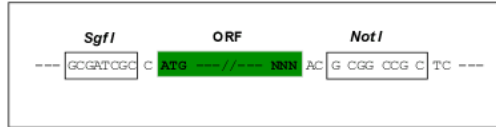
MGAPACALALCVAVAIVAGASSESLGTEQRVVGRAAEVPGPEPGQEQLVFGSGDAVELSCPPPGGGPMG  
 PTVWVKDGTGLVPSERVLVGPQRLQVLNASHEDSGAYSCRQRLTQRVLCVHFSVRVTDAPSSGDDDEGEDE  
 AEDTGVDTGAPYWTRPERMDKLLAVPAANTVRFRCPAAGNPTPSISWLKNGREFRGEHRIGGIKLRHQQ  
 WSLVMESVVPSSDRGNVTCVVENKFGSIRQTYTLDVLESPHRPILQAGLPANQTAVLGSDVEFHCKVYSD  
 AQPHIQWLKHVEVNGSKVGPDPYVTVLKSWISESVEADVRLRLANVSRDGGEYLCRATNFIGVAEKA  
 FWLSVHGPRAAEELVEADEAGSVYAGILSYGVGFLLFLLVVAAVTLCRLRSPPKKGLGSPTVHKISRFP  
 LKRQVSLASNASSNTPLVRIARLSSGEGPTLANVSELELPADPKWELSRARLTGKPLGEGCFGQVVM  
 AEAIGIDKDRAAKPVTVAVKMLKDDATDKDLSLVSEMEMMKMIGKHKNIINLLGACTQGGPLYVLYEYA  
 AKGNLREFLRARRPPGLDYSFDTCKPPEEQLTFKDLVSCAYQVARGMEYLASQKCIHRDLAARNVLVTE  
 NVMKIADFGFLARDVHNLDYKKTNGRLPVKWMPEALFDRVYTHQSDVWSFGVLLWEIFTLGGSPYPI  
 PVEELFKLLKEGHRMDKPANCTHDLYMIMRECWAAPSQRPTFKQLVEDLDRVLTVTSTDEYLDLSAPFE  
 QYSPGGQDTPSSSSSGDDSVFAHDLLPPAPPSSGGSRT

TRPLE - GFP Tag - V

**Restriction Sites:** SgfI-NotI

Cloning Scheme:

Cloning sites used for ORF Shuttling:



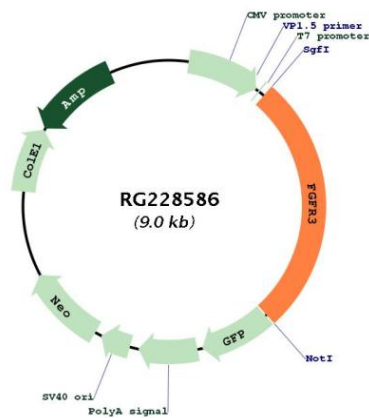
ACCN: NM\_001163213

ORF Size: 2424 bp

<b>OTI Disclaimer:</b>	<p>Due to the inherent nature of this plasmid, standard methods to replicate additional amounts of DNA in E. coli are highly likely to result in mutations and/or rearrangements. Therefore, OriGene does not guarantee the capability to replicate this plasmid DNA. Additional amounts of DNA can be purchased from OriGene with batch-specific, full-sequence verification at a reduced cost. Please contact our customer care team at <a href="mailto:custsupport@origene.com">custsupport@origene.com</a> or by calling 301.340.3188 option 3 for pricing and delivery.</p> <p>The molecular sequence of this clone aligns with the gene accession number as a point of reference only. However, individual transcript sequences of the same gene can differ through naturally occurring variations (e.g. polymorphisms), each with its own valid existence. This clone is substantially in agreement with the reference, but a complete review of all prevailing variants is recommended prior to use. <a href="#">More info</a></p>
<b>OTI Annotation:</b>	This clone was engineered to express the complete ORF with an expression tag. Expression varies depending on the nature of the gene.
<b>Components:</b>	The ORF clone is ion-exchange column purified and shipped in a 2D barcoded Matrix tube containing 10ug of transfection-ready, dried plasmid DNA (reconstitute with 100 ul of water).
<b>Reconstitution Method:</b>	<ol style="list-style-type: none"> <li>1. Centrifuge at 5,000xg for 5min.</li> <li>2. Carefully open the tube and add 100ul of sterile water to dissolve the DNA.</li> <li>3. Close the tube and incubate for 10 minutes at room temperature.</li> <li>4. Briefly vortex the tube and then do a quick spin (less than 5000xg) to concentrate the liquid at the bottom.</li> <li>5. Store the suspended plasmid at -20°C. The DNA is stable for at least one year from date of shipping when stored at -20°C.</li> </ol>
<b>RefSeq:</b>	<u><a href="#">NM_001163213.1</a></u> , <u><a href="#">NP_001156685.1</a></u>
<b>RefSeq Size:</b>	4310 bp
<b>RefSeq ORF:</b>	2427 bp
<b>Locus ID:</b>	2261
<b>UniProt ID:</b>	<u><a href="#">P22607</a></u>
<b>Cytogenetics:</b>	4p16.3
<b>Protein Families:</b>	Druggable Genome, Protein Kinase, Transmembrane
<b>Protein Pathways:</b>	Bladder cancer, Endocytosis, MAPK signaling pathway, Pathways in cancer, Regulation of actin cytoskeleton

**Gene Summary:**

This gene encodes a member of the fibroblast growth factor receptor (FGFR) family, with its amino acid sequence being highly conserved between members and among divergent species. FGFR family members differ from one another in their ligand affinities and tissue distribution. A full-length representative protein would consist of an extracellular region, composed of three immunoglobulin-like domains, a single hydrophobic membrane-spanning segment and a cytoplasmic tyrosine kinase domain. The extracellular portion of the protein interacts with fibroblast growth factors, setting in motion a cascade of downstream signals, ultimately influencing mitogenesis and differentiation. This particular family member binds acidic and basic fibroblast growth hormone and plays a role in bone development and maintenance. Mutations in this gene lead to craniosynostosis and multiple types of skeletal dysplasia. [provided by RefSeq, Aug 2017]

**Product images:**


Circular map for RG228586