

Product datasheet for **RG228580**

CASS4 (NM_001164116) Human Tagged ORF Clone

Product data:

Product Type:	Expression Plasmids
Product Name:	CASS4 (NM_001164116) Human Tagged ORF Clone
Tag:	TurboGFP
Symbol:	CASS4
Synonyms:	C20orf32; CAS4; HEFL; HEPL
Mammalian Cell Selection:	Neomycin
Vector:	pCMV6-AC-GFP (PS100010)
E. coli Selection:	Ampicillin (100 ug/mL)



[View online »](#)

ORF Nucleotide Sequence:

>RG228580 representing NM_001164116
 Red=Cloning site Blue=ORF Green=Tags(s)

TTTTGTAATACGACTCACTATAGGGCGGCCGGAATTCGTGACTGGATCCGGTACCGAGGAGATCTGCC
 GCC**CGCATCGCC**

ATGAAGGGAACAGGCATCATGGACTGTGCGCCCAAGGCACCTCTGGCCAGGGCACTTTATGACAACCTGCC
 CTGACTGCTCTGACGAGCTGGCTTTTCAGCAGAGGGGACATCCTGACCATTTCTGGAGCAACACGTGCCAGA
 AAGCGAGGGTTGGTGAAGTGTTTGTCTCCATGGGAGGCAAGGCCTGGCCCTGCCAACCGCTCCAAATC
 CTCACGGAGGTCGCTGCAGACAGGCCGTGCCCCCATTCCTGAGAGGCCTGGAAGAAGCTCTGCCAGCT
 CAGAGGAGACCTATCAGGTGCCACTCTACCCCGCTCCACTCCAGGCCCGTTTATGAGCAGATGAG
 GAGTTGGGCGGAGGGGCCAGCCCTACTGCCAAGTCTATGAATCCCGACCTCCACCAGTGCC
 AGAATCATCTGTAAAAGACTCTCAGCTTTCCAAAACAGGCCATCCTCACGTTCCAGACCTGTCCGGG
 CCTCACTGCCACTCTGCCTCCAGGTGTATGACGTGCCTACCCAGCACCGGGGCCCGTGGTCTGAA
 GGAGCCAGAGAAGCAGCAGTTATATGACATACCAGCCAGCCCAAGAAGGCAGGACTCCATCCCCAGAC
 AGCCAAGCAAGTGGGCGGGTGTCCCCTGATATCAGTACTACCTTAAGAAGAGGCGGTTACAGCACAT
 TACCAAATCCTCAGAAATCGAATGGATTATGACACTCCAGTGTCTCCAGGAAAGGCCAGCGTCAGAAA
 CACGCCTCTACCAGCTTTGCGGAAGAATCAAGGCCCCACGCTCTCCCCAGTTCCAGCTCCACTTTCTAC
 AATCCTCAAGTGGCAGATCCAGGTCCCTCACTCCACAACCTGAATAACAATGTGCCCATGCGAAAAAAC
 TCAGCCTCCAGAAATCCTTCTTATGGCTTCTTGTACCCAGAGGCACATTTCTTTGGATGAAGATGT
 CAGCTACAAGTTCTTCAAGCTTTCTGATTCCCGAGTGGAACAGCAGAACACCAAGCCCAATATTTAT
 GACATCCCTAAAGCAACGTGAGTGTCTCAGGCTGGGAAGGAGCTGGAGAAAGCAAGGAGGTGTGAG
 AGAATCCGCGGGCCATAAATCCTCATGGTTCTCCAGACGGACAACCTCCCATCTCCTGAACCGGACAG
 ATTATCAGGTTCCAGTTCTGACAGCAGAGCTAGCATCGTTTCCTCGTGCTCCACCACATCCACCGACGAC
 TCCTCCAGCTTCTCCTCGGAGGAGTCAAGAAAGGAGCTCTCCTTGACCTGGATGTGGCCAGGAGACAG
 TGATGGCTCTGCAGCACAAAGGTGGTCACTCTGTGCTGGCTGATGCTCTTTGTCAGCAGGAAGTGGAG
 ATTCCGAGACTATCTGGAGGCCAACATTGATGCAATCCACAGGTCCACTGATCACATAGAAGAATCTGTA
 AGAGAATTTCTGGATTTTGGCCGAGGAGTCCATGGGACTGCCTGTAACTCACTGACAGTAACCTTCAGA
 ACAGAATTCGGGACCAGATGCAGACCATCTCCAACCTCCTACCGCATCCTGCTTGAACAAAGGAAAGCTT
 GGATAATCGCAATTGGCCTCTGGAAGTTCTTGTGACTGACAGTGTCCAGAACAGCCAGATGACCTTGAG
 AGGTTTGTGATGGTGGCAGGATGCTTCCAGAAGACATCAAGAGGTTTGCCTCCATTGTGATTGCCAATG
 GAAGGCTCCTTTTTAAGCGGAACGTGAAAAGGAGAGACTGTGCAAGTTGACCCCAATGCAGAATTTAA
 GTGTGAAAAATACATCCAGCCTCCCCAAAGAGAAACTGAATCACACCAAAAGAGTACCCCTTCCACTAAG
 CAAAGGGAAGATGAACACTCTTCTGAACTATTAAGAAAAATAGGGCAAAATATCTGTGGACAGAATCCTG
 GCCCTCTTATACCTCAGCCTTCGAGTCAACAGACTCCTGAGAGGAAACCCCGCTTATCTGAACACTGCCG
 GCTCTACTTTGGGGCGCTCTTCAAAGCCATCAGCGCATTTACGGCAGCCTCAGCAGCAGCCAGCCCGCG
 GAGATCATCACTCAGAGCAAGCTGGTATCATGGTGGGACAGAAGCTGGTGGACACGCTGTGCATGGAGA
 CCCAGGAGAGGGACGTGCGCAACGAGATCCTCCGTGGCAGCAGTACCTCTGCAGCCTGCTCAAGGACGT
 AGCGCTGGCCACTAAGAATGCCGTGCTCAGTACCCAGCCCTGCCGCGCTGGGGCACCTCCAGGCGGAG
 GCTGAGAAGCTGGAGCAACACACGCGGCAGTTCAGAGGGACACTGGGA

ACGCGTACGCGGCCGCTCGAG – GFP Tag – GTTTAA

Protein Sequence: >RG228580 representing NM_001164116
 Red=Cloning site Green=Tags(s)

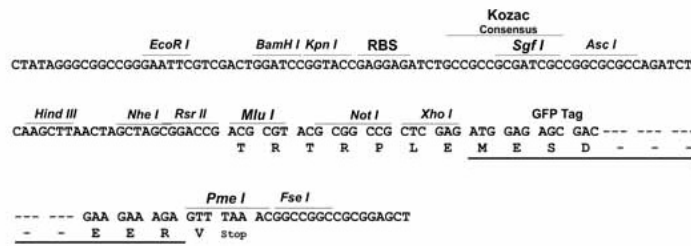
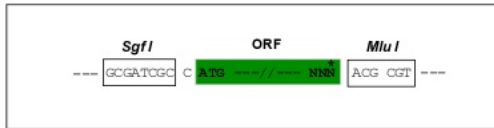
MKGTGIMDCAPKALLARALYDNCPCDSELAFRSGDILTILEQHVPESEGWWKCLLHGRQGLAPANRLQI
 L TEVAADRPCPPFLRGL EEAPASSEETYQVPTLPRPPTPGPVYEQMRSWAEGPQPPTAQVYEFDPPTSA
 RIICEKTL SFPKQAILTLPRPVRASLPTLPSQVYDVPTQHRGPVVLKEPEKQQLYDIPASPKKAGLHPPD
 SQASGQGVPLISVTTLRGGYSTLPNPQKSEWIYDTPVSPGKASVRNTPLTSFAEESRPHALPSSSSTFY
 NPPSGRSRSLTPQLNNNVPMQKLSLPEIPSYGFLVPRGTFPLDEDVSYKVPSSFLIPRVEQQNTKPNIIY
 DIPKATSSVSQAGKELEKAKEVSENSAGHNSSWF SRRTTSPSPEPDRLSGSSSDSRASIVSSCSTTSTDD
 SSSSSSEESAKELSLDLVAKETVMALQHVVSSVAGLMLFVSRKWRFRDYLEANIDAIHRSTDHIEESV
 REF LDFARGVHGTACNL TDSNLQNRIRDQMTISNSYRILLETKE SLDNRNWPLEVLVTDVSVQNSPDDLE
 RFVMVARM LPEDIKRFASIVIANGRLLFKRNC EKETVQLTPNAEFKCEKIYIQQPQRETESHQKSTPSTK
 QREDEHSELLKKNRANICGQNPGLIPQPSQQT PERKPRLSEHCRLYF GALFKAISAFHGSLSSSQPA
 EIITQSKLVIMVGQKLVDTLCMETQERDVRNEILRGSSHLCSLLKDVALATKNAVL TYPSPAALGHLQAE
 AEKLEQHTRQFRGLG

TRTRPLE - GFP Tag - V

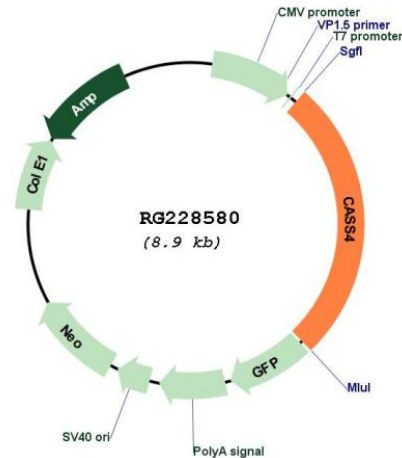
Restriction Sites: SgfI-MluI

Cloning Scheme:

Cloning sites used for ORF Shuttling:



Plasmid Map:



ACCN: NM_001164116

ORF Size: 2358 bp

OTI Disclaimer: The molecular sequence of this clone aligns with the gene accession number as a point of reference only. However, individual transcript sequences of the same gene can differ through naturally occurring variations (e.g. polymorphisms), each with its own valid existence. This clone is substantially in agreement with the reference, but a complete review of all prevailing variants is recommended prior to use. [More info](#)

OTI Annotation: This clone was engineered to express the complete ORF with an expression tag. Expression varies depending on the nature of the gene.

Components: The ORF clone is ion-exchange column purified and shipped in a 2D barcoded Matrix tube containing 10ug of transfection-ready, dried plasmid DNA (reconstitute with 100 ul of water).

Reconstitution Method:

1. Centrifuge at 5,000xg for 5min.
2. Carefully open the tube and add 100ul of sterile water to dissolve the DNA.
3. Close the tube and incubate for 10 minutes at room temperature.
4. Briefly vortex the tube and then do a quick spin (less than 5000xg) to concentrate the liquid at the bottom.
5. Store the suspended plasmid at -20°C. The DNA is stable for at least one year from date of shipping when stored at -20°C.

RefSeq: [NM_001164116.2](#)

RefSeq Size: 3179 bp

RefSeq ORF: 2361 bp

Locus ID: 57091

UniProt ID: [Q9NQ75](#)

Cytogenetics: 20q13.31

Gene Summary:

Docking protein that plays a role in tyrosine kinase-based signaling related to cell adhesion and cell spreading. Regulates PTK2/FAK1 activity, focal adhesion integrity, and cell spreading. [UniProtKB/Swiss-Prot Function]