

## Product datasheet for **RG228572**

### **PYGM (NM\_001164716) Human Tagged ORF Clone**

#### **Product data:**

Product Type:	Expression Plasmids
Product Name:	PYGM (NM_001164716) Human Tagged ORF Clone
Tag:	TurboGFP
Symbol:	PYGM
Synonyms:	GSD5
Mammalian Cell Selection:	Neomycin
Vector:	pCMV6-AC-GFP (PS100010)
E. coli Selection:	Ampicillin (100 ug/mL)



[View online »](#)

**ORF Nucleotide Sequence:**

>RG228572 representing NM\_001164716  
 Red=Cloning site Blue=ORF Green=Tags(s)

TTTTGTAATACGACTCACTATAGGGCGGCCGGAATTCGTCGACTGGATCCGGTACCGAGGAGATCTGCC  
 GCC**GCGATCGCC**

ATGTCCCGGCCCTGTCAGACCAAGAGAAAAGAAAGCAAATCAGTGTGCGTGGCCTGGCCGGCGTGGAGA  
 ACGTGACTGAGCTGAAAAAGAACTTCAACCGGCACCTGCATTTACACTCGTAAAGGACCGCAATGTGGC  
 CACCCACGAGACTACTTTTGTCTTGCCCATACCGTGCACGACACCTCGTGGGGCGTGGATCCGC  
 ACGCAGCAGCACTACTATGAGAAGGACCCCAAGAAGATCTCCGGGGCTGGCAGATGGAGGAGGCCGATG  
 ACTGGCTTCGCTACGGCAACCCCTGGGAGAAGGCCCGCCGAGTTCACGCTACCTGTGCACTTCTACGG  
 CCATGTGGAGCACACCAGCCAGGGTGCCAAAGTGGGTGGACACACAGGTGGTACTGGCCATGCCCTACGAT  
 ACGCCCGTGCCTGGCTATCGCAACAATGTTGTCAACACCATGCGCCTCTGGTCTGCCAAGGCTCCCAATG  
 ACTTCAACCTCAAGGACTTCAATGTCGGTGGCTACATCCAGGCTGTGTTGGACCGAAACCTGGCGGAGAA  
 CATCTCTCGTGTCTGTACCCCAATGATAATTTCTTCAAGGGAAGGAGCTGCGGCTGAAGCAGGAGTAT  
 TTCGTGGTGGCTGCCACCTCCAGGACATCATCGTTCGCTTCAAGTCTTCCAAGTTCGGCTGCCGTGATC  
 CCGTGCACGAACTTCGATGCCTTCCAGATAAGGTGGCCATCCAGCTCAATGACACCCACCCCTCCCT  
 GGCCATCCCCGAGCTGATGAGGATCCTGGTGGACCTGGAACGGATGGACTGGGACAAGGCGTGGGATGTG  
 ACAGTGAGGACCTGTGCCTACACCAACCACACGGTGTGCCCGAGGCCCTGGAGCGCTGGCCGGTGCACC  
 TCTTGGAGACGCTGTGCCGCGGCACCTCCAGATCATCTACGAGATCAACCAGCGCTTCTCAACCGGGT  
 GGCGGCCGATCCCAGGGGACGTAGACCGGCTGCGGCGCATGTCGCTGGTGGAGGAGGGCGCAGTGAAG  
 CGCATCAACATGGCACACCTGTGCATCGCGGGTTCGCACGCCGTCACCGCGTGGCGGCATCCACTCCG  
 AGATCCCAAGAAGACCATCTTCAAAGACTTCTATGAGCTGGAGCCTCATAAGTCCAGAATAAGACCAA  
 CGGCATACCCCTCGGCGCTGGCTGGTTCTGTGTAAACCCGGGCTGGCAGAGGTCAATTGCTGAGCGCATC  
 GGGGAGGACTTCACTCTGACCTGGACAGCTGCGCAAATGCTCTCCTTTGTGGATGATGAAGCTTCA  
 TTCGGGATGTGGCCAAAGTGAAGCAGGAAAAAAGTTGAAGTTTGTGCCTACCTAGAGAGGGAATACAA  
 AGTCCACATCAACCCCAACTCACTCTTCGACATCCAGGTGAAGCGGATTCACGAATATAAACGACAGCTC  
 CTCAACTGCCTCCATGTCATCACCTGTACAACCGCATCAAGAGGGAGCCCAATAAGTTTTTTGTGCCTC  
 GGACTGTGATGATTGGAGGGAAGGCTGCACCTGGGTACCACATGGCCAAGATGATCATCAGACTCGTCAC  
 AGCCATCGGGATGTGGTCAACCATGACCCGGCAGTGGGTGACCGCCTCCGTGTCATCTTCTGGAGAAC  
 TACCGAGTCTCACTGGCCGAGAAAGTATCCCAGCTGCAGACCTCTCTGAGCAGATCTCCACTGCGGGCA  
 CTGAAGCCTCAGGCACCGCAACATGAAGTTCATGCTCAACGGGGCTCTGACCATTGGCACCATGGACGG  
 GGCAATGTGGAGATGGCAGAAGAGGCGGGAGAGGAAAATTTCTCATCTTTGGCATGCGGGTGGAGGAT  
 GTGGATAAGCTTGACCAAGAGGGTACAATGCCCAGGAGTACTACGATCGCATTCTGAGCTTCCGACGG  
 TCATTGAGCAGCTGAGCAGTGGCTTCTTCTCCCCAAACAGCCCGACCTGTTCAAGGACATTGTCAATAT  
 GCTCATGCACCATGACCGGTTTAAAGTCTTCGACAGATTATGAAGACTACATTAATGCCAGGAGAAAAGTC  
 AGCGCCTGTACAAGAACCAAGAGAGTGGACCGGATGGTATCCGGAACATAGCCACCTCTGGCAAGT  
 TCTCCAGTGACCGCACCATTTGCCAGTATGCCCGGAGATCTGGGGTGTGGAGCCTTCCCGCCAGCGCCT  
 GCCAGCCCCGGATGAGGCCATC

**ACGCGT**ACGCGGCCGCTCGAG – GFP Tag – GTTTAA

**Protein Sequence:** >RG228572 representing NM\_001164716  
 Red=Cloning site Green=Tags(s)

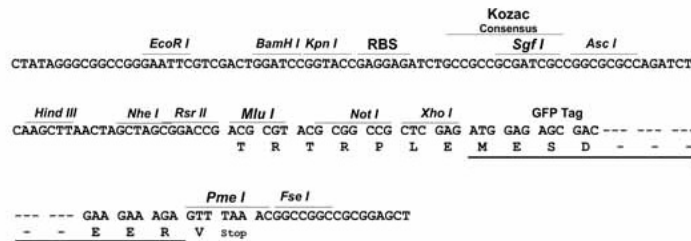
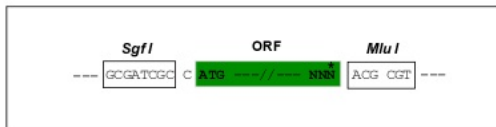
```
MSRPLSDQEKRKQISVRGLAGVENVTELKKNFNRHLHFTLVKDRNVATPRDYFALAHTVRDHLVGRWIR
TQQHYEYKDPKKISGGWQMEEADDWLR YGNPWEKARPEFTLPVHFYGHVEHTSQGAKWVDTQVVLAMPYD
TPVPGYRNNVNTMRLWSAKAPNDFNLKDFNVGGYIQAVLDRNLAENISRVLYPNDNFFEGKELRLKQEY
FVVAATLQDIIRRFKSSKFGCRDPVRTNFDAFPDKVAIQLNDRTHPSLAIPELMRILVDLERMDWDKAWDV
TVRTCAYTNHTVLPALERWPVHLLLETLPRHLQIIEINQRFNLRVAAAFPGDVDRLRMSLVEEGAVK
RINMAHLCIAGSHAVNGVARIHSEILKKTIFKDFYELEPHKFQNKTNGITPRRWLVLCNPGLAEVIAERI
GEDFISDLQRLKLLSFVDDEAFIRDVAKVKQENKLFKFAAYLERYKVVHINPNSLFDIQVKRIHEYKRQL
LNCLHVITLYNRIKREPKNKFFVPRVTMIGGKAAPGYHMAKMIIRLVTAIGDVVNHDPVGDRLRVIFLEN
YRVSLAEKVIPAADLSEQISTAGTEASGTGNMKFMLNGALTIGTMDGANVEMAEAEAGEENFFIFGMRVED
VDKLDQRGYNAAQEYYDRIPELRQVIEQLSSGFFSPKQPDLFKDIVNMLMHHDRFKVFADYEDYIKCQEKV
SALYKNPREWTRMIVIRNIATSGKFSDDRTIAQYAREIWGVEPSRQRLPAPDEAI
```

TRTRPLE - GFP Tag - V

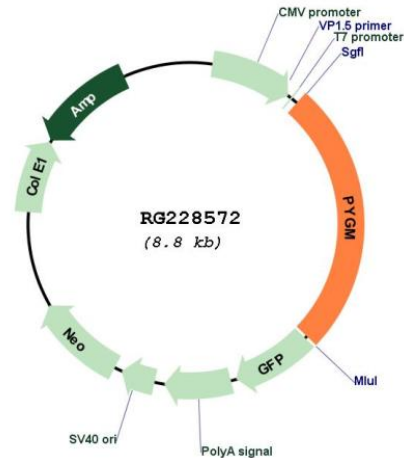
**Restriction Sites:** SgfI-MluI

**Cloning Scheme:**

Cloning sites used for ORF Shutting:



## Plasmid Map:



ACCN: NM\_001164716

ORF Size: 2262 bp

**OTI Disclaimer:** The molecular sequence of this clone aligns with the gene accession number as a point of reference only. However, individual transcript sequences of the same gene can differ through naturally occurring variations (e.g. polymorphisms), each with its own valid existence. This clone is substantially in agreement with the reference, but a complete review of all prevailing variants is recommended prior to use. [More info](#)

**OTI Annotation:** This clone was engineered to express the complete ORF with an expression tag. Expression varies depending on the nature of the gene.

**Components:** The ORF clone is ion-exchange column purified and shipped in a 2D barcoded Matrix tube containing 10ug of transfection-ready, dried plasmid DNA (reconstitute with 100 ul of water).

**Reconstitution Method:**

1. Centrifuge at 5,000xg for 5min.
2. Carefully open the tube and add 100ul of sterile water to dissolve the DNA.
3. Close the tube and incubate for 10 minutes at room temperature.
4. Briefly vortex the tube and then do a quick spin (less than 5000xg) to concentrate the liquid at the bottom.
5. Store the suspended plasmid at -20°C. The DNA is stable for at least one year from date of shipping when stored at -20°C.

RefSeq: [NM\\_001164716.1](#), [NP\\_001158188.1](#)

RefSeq Size: 3369 bp

RefSeq ORF: 2265 bp

Locus ID: 5837

UniProt ID:	<a href="#">P11217</a>
Cytogenetics:	11q13.1
Protein Families:	Druggable Genome
Protein Pathways:	Insulin signaling pathway, Starch and sucrose metabolism
Gene Summary:	This gene encodes a muscle enzyme involved in glycogenolysis. Highly similar enzymes encoded by different genes are found in liver and brain. Mutations in this gene are associated with McArdle disease (myophosphorylase deficiency), a glycogen storage disease of muscle. Alternative splicing results in multiple transcript variants.[provided by RefSeq, Sep 2009]