

Product datasheet for **RG228569**

TDRD3 (NM_001146070) Human Tagged ORF Clone

Product data:

Product Type:	Expression Plasmids
Product Name:	TDRD3 (NM_001146070) Human Tagged ORF Clone
Tag:	TurboGFP
Symbol:	TDRD3
Mammalian Cell Selection:	Neomycin
Vector:	pCMV6-AC-GFP (PS100010)
E. coli Selection:	Ampicillin (100 ug/mL)



[View online »](#)

ORF Nucleotide Sequence:

>RG228569 representing NM_001146070
 Red=Cloning site Blue=ORF Green=Tags(s)

TTTTGTAATACGACTCACTATAGGGCGGCCGGGAATTCGTCGACTGGATCCGGTACCGAGGAGATCTGCC
 GCC**CGCATCGCC**

ATGGCCCAGTGGCCGGCGCGGCTTGTCCAGCGGGTGGTATCTTTTCAGATGAAGGCATTGAAGCTT
 GCACAAGCTCTCCAGACAAAGTCAATGTAATGACATCATCCTGATTGCTCTCAATACAGATCTGAGAAC
 AATTGGCAAGAAATTCCTCCCCAGTGACATCAATAGTGGAAAGGTAGAAAAGCTCGAAGGTCATGTGTT
 TTGCAAAATCAAAAAATTCGCAATGTTGCTGCACCAAAGGATAATGAAGAATCTCAGGCTGCACCAAGGA
 TGCTGCGATTACAGATGACTGATGGTCATAAAGTTGCACAGCAGTAGAATTTAGTTATATGTCAAAAAAT
 AAGCCTGAACACACCACCTGGAACAAAGTTAAGCTCTCAGGCATTGTTGACATAAAAAATGGATTCTCTG
 CTCTTGAATGACTCTAACACCACAGTCTTGGTGGTGAAGTGAACACCTTATTGAGAAAATGGGAGTTAC
 AGAGAAGCTTATCAAAACACAATAGAAGCAATATTGGAAGTGAAGTGGACCACCGCCTTTTGTGCCTTT
 TGGACAGAAGTGTATCTCATGTCCAAGTGGATAGCAGAGAACTTGATCGAAGAAAAACATTGCAAGTT
 ACAATGCCTGTCAAACCTACAAATGATAATGATGAATTTGAAAAGCAAAGGACCGCTGCTATTGCTGAAG
 TTGCAAAGAGCAAGGAAACCAAGACATTTGGAGGAGGTGGTGGTGGTGTGCTAGAAGTAATCTCAATATGAA
 TGCTGCTGGTAACCGAAATAGGGAAGTTTTACAGAAAAGAAAAGTCAACCAAAATCAGAGGGAAAACATGAA
 GGTGTCTATAGAGAACTGGTTGATGAGAAAAGCTCTGAAGCACATAACGGAATGGGCTTCAGTAAGGAAG
 CATCGAGGCAAGCTCTTATGGATAATGGCAACAACCTTAGAAGCAGCACTGAACGTAATCTTACAAGCAA
 TAAACAGAAACCTGTTATGGGTCCTCTCTGAGAGGTAGAGGAAAAGGCAGGGGGCGAATAAGATCTGAA
 GATGAAGAGGACCTGGGAAATGCAAGGCCATCAGCACAAGCACATTATTGATTTCTTGGAAATCTAAAA
 TGGGAACCTTGAATGTGGAAGAACCTAAATCACAGCCACAGCAGCTTCATCAGGGACAATACAGATCATC
 AAATACTGAGCAAAATGGAGTAAAAGATAATAATCATCTGAGACATCCTCCTCGAAATGATACCAGGCAG
 CCAAGAAATGAAAAACCGCCTCGTTTTCAAGAGACTCCAAAAATTCAAAGTCAGTTTTAGAAAGGCAGTG
 GATTACCTAGAAAATAGAGGTTCTGAAAGACCAAGTACTTCTTCAAGTATCTGAAGTATGGGCTGAAGACAG
 AATCAAAATGTGATAGACCGTATTCTAGATATGACAGAACTAAAGATACTTCATATCCTTTAGGTTCTCAG
 CATAGTGATGGTGTCTTTAAAAAAGAGATAACTCTATGCAAAGCAGATCAGGAAAAGGTCCTCCTTTG
 CAGAGGCAAAAAGAAAATCCACTTCTCAAGGATCTGTAGATTATAATAATCAAAAACGTGGAAAAAGAGA
 AAGCCAAACATCTATTCCTGATTATTTTTATGACAGGAAATCACAAACAATAAATAATGAAGCTTTCAGT
 GGTATAAAAATGAAAAACATTTAATGTAATACTGATTATCAGAATCCAGTTCGAAGTAAATAGTTTCA
 TTGGTGTTCAAAATGGAGAAGTAGAAATGCCACTGAAAGGAAGACGAATAGGACCTATTAAGCCAGCAGG
 ACCTGTACAGCTGTACCCTGTGATGATAAAAATTTTTACAATAGTGGGCCAAAACGAAGATCTGGGCCA
 ATTAAGCCAGAAAAAATACTAGAATCATCTATTCTATGGAGTATGCAAAAATGTGGAAACCTGGAGATG
 AATGTTTTGCACTTTATTGGGAAGACAACAAGTTTTACCGGCAGAAAGTTGAAGCCCTCCATTCTCGGG
 TATGACAGCAGTTGTTAAATTCATTGACTACGGAAACTATGAAGAGGTGCTACTGAGCAATATCAAGCCC
 ATTCAAACAGAGGCATGGGAGGAAGAAGGCACCTACGATCAAACCTCTGGAGTTCGGTAGGGGAGGTGATG
 GCCAGCCAAGACGATCCACTCGGCCAACCAACAGTTTTACCAACCACCCCGGGCTCGGAAC

ACGCGTACGCGGCCGCTCGAG - GFP Tag - GTTTAA

Protein Sequence: >RG228569 representing NM_001146070
 Red=Cloning site Green=Tags(s)

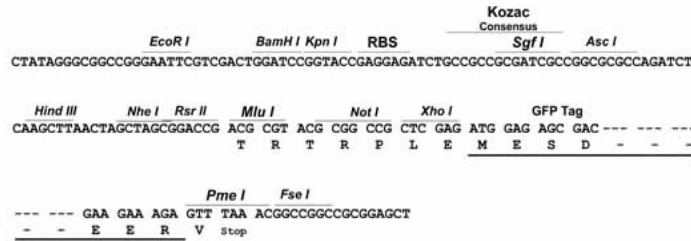
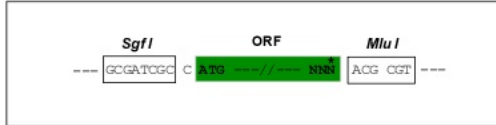
MAQVAGAALSQAGWYLSDEGIEACTSSPDKVNVDIILIALNTDLRTIGKKFLPSDINSKVEKLEGPCV
 LQIQKIRNVAAPKDNEESQAAPRMLRLQMTDGHISCTAVEFSYMSKISLNTPPGTVKLSGIVDIKNGFL
 LLNDSNTTVLGGVEVHLIEKWELQRSLSKHNRSNIGTEGGPPFVFPFGQKCVSHVQVDSRELDRRKTLQV
 TMPVKPTNDNDEFKQRTAAIAEVAKSKEKTKTFGGGGGARSNLMNAAGNRNREVLQKEKSTKSEKHE
 GVIYRELVDEKALKHITEMGFSKEASRQALMDNGNNLEAALNVLLTSNKQKPVMPGPPLRGRGKGRGRIRSE
 DEEDLGNARPSAPSTLFDLFESKMGTLNVVEPKSQPQQLHQGQYRSSNTEQNGVKDNNHLRHPPRNDTRQ
 PRNEKPPRFQRDSQNSKSVLESGLPNRNGSERPSTSSVSEVWAEDRIKCDRPSRYDRTKDTSYPLGSQ
 HSDGAFKRDNSMQSRSGKGPSFAEAKENPLPQGSVDYNNQKRGKRESQTSIPDYFYDRKSQTINNEAFS
 GIKIEKHFVNTDYQNPVRSNSFIGVNPGEVEMPLKGRRIGPIKAPGVTAVPCDDKIFYNSGPKRRSGP
 IKPEKILESSIPMEYAKMWPQDECFALYWEDNKFYRAEVEALHSSGMTAVVKFIDYGNVEVLLSNIKP
 IQTEAWEEEGTYDQTLFRRGGDQPRRSTRPTQQFYQPPRARN

TRTRPLE - GFP Tag - V

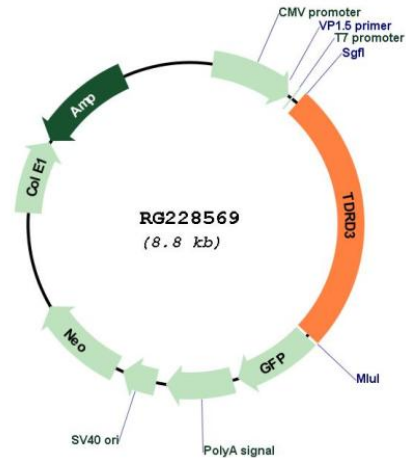
Restriction Sites: SgfI-MluI

Cloning Scheme:

Cloning sites used for ORF Shuttling:



Plasmid Map:



ACCN: NM_001146070

ORF Size: 2232 bp

OTI Disclaimer: The molecular sequence of this clone aligns with the gene accession number as a point of reference only. However, individual transcript sequences of the same gene can differ through naturally occurring variations (e.g. polymorphisms), each with its own valid existence. This clone is substantially in agreement with the reference, but a complete review of all prevailing variants is recommended prior to use. [More info](#)

OTI Annotation: This clone was engineered to express the complete ORF with an expression tag. Expression varies depending on the nature of the gene.

Components: The ORF clone is ion-exchange column purified and shipped in a 2D barcoded Matrix tube containing 10ug of transfection-ready, dried plasmid DNA (reconstitute with 100 ul of water).

Reconstitution Method:

1. Centrifuge at 5,000xg for 5min.
2. Carefully open the tube and add 100ul of sterile water to dissolve the DNA.
3. Close the tube and incubate for 10 minutes at room temperature.
4. Briefly vortex the tube and then do a quick spin (less than 5000xg) to concentrate the liquid at the bottom.
5. Store the suspended plasmid at -20°C. The DNA is stable for at least one year from date of shipping when stored at -20°C.

RefSeq: [NM_001146070.2](#)

RefSeq Size: 2592 bp

RefSeq ORF: 2235 bp

Locus ID:	81550
UniProt ID:	Q9H7E2
Cytogenetics:	13q21.2
Protein Families:	Druggable Genome
Gene Summary:	<p>Scaffolding protein that specifically recognizes and binds dimethylarginine-containing proteins. In nucleus, acts as a coactivator: recognizes and binds asymmetric dimethylation on the core histone tails associated with transcriptional activation (H3R17me2a and H4R3me2a) and recruits proteins at these arginine-methylated loci. In cytoplasm, may play a role in the assembly and/or disassembly of mRNA stress granules and in the regulation of translation of target mRNAs by binding Arg/Gly-rich motifs (GAR) in dimethylarginine-containing proteins. [UniProtKB/Swiss-Prot Function]</p>