

Product datasheet for **RG228544**

SLC15A2 (NM_001145998) Human Tagged ORF Clone

Product data:

Product Type:	Expression Plasmids
Product Name:	SLC15A2 (NM_001145998) Human Tagged ORF Clone
Tag:	TurboGFP
Symbol:	SLC15A2
Synonyms:	PEPT2
Mammalian Cell Selection:	Neomycin
Vector:	pCMV6-AC-GFP (PS100010)
E. coli Selection:	Ampicillin (100 ug/mL)



[View online »](#)

ORF Nucleotide
Sequence:

>RG228544 representing NM_001145998
Red=Cloning site Blue=ORF Green=Tags(s)

TTTTGTAATACGACTCACTATAGGGCGGCCGGAATTCGTCGACTGGATCCGGTACCGAGGAGATCTGCC
GCCGCGATCGCC

ATGAATCCTTTCCAGAAAAATGAGTCCAAGGAACTCTTTTTTACCTGTCTCCATTGAAGAGGTACCAC
CTCGACCACCTAGCCCTCAAAGAAGCCATCTCGACAATCTGTGGCTCCAACCTATCCACTGAGCATTGC
CTTCATTGTGGTGAATGAATTCTGCGAGCGCTTTTCTATTATGGAATGAAAGCTGTGCTGATCCTGTAT
TTCCTGTATTTCTGCACTGGAATGAAGATACCTCCACATCTATATACCATGCCTTCAGCAGCCTCTGTT
ATTTTACTCCCATCCTGGGAGCAGCCATTGCTGACTCGTGGTTGGGAAAAATCAAAGTCTATCATTGAT
CGGCCTGAGTCTAATAGCTTTGGGGACAGGAGGCATCAAACCTGTGTGCAGCTTTTGGTGAGACCAG
TTTGAAGAAAAACATGCAGAGGAACGGACTAGATACTTCTCAGTCTTCTACCTGTCCATCAATGCAGGGA
GCTTGATTTCTACATTTATCACACCCATGCTGAGAGGAGATGTGCAATGTTTTGGAGAAGACTGCTATGC
ATTGGCTTTTGGAGTTCAGGACTGCTCATGGTAATTGCACTTGTGTGTTTGAATGGGAAGCAAATA
TACAATAAACCCCTGAAGGAAACATAGTGGCTCAAGTTTTCAAATGTATCTGGTTTCTATTTCCA
ATCGTTTCAAGAACCCTTCTGGAGACATTTCAAAGCGACAGCACTGGCTAGACTGGGCGGCTGAGAAATA
TCCAAAGCAGCTCATTATGGATGTAAGGCACTGACCAGGGTACTATTCTTTATATCCCATTGCCCATG
TTCTGGGCTCTTTTGGATCAGCAGGGTTCACGATGGACTTTGCAAGCCATCAGGATGAATAGGAATTTGG
GGTTTTTGTGCTTCAGCCGGACCAGATGCAGGTTCTAAATCCCCTTCTGGTTCTTATCTTCATCCCCTT
GTTTGACTTTGTCATTTATCGTCTGGTCTCCAAGTGTGGAATTAATTCTCATCACTTAGGAAAAAGGCT
GTTGGTATGATCCTAGCATGCCTGGCATTTCAGTTCGCGCAGCTGTAGAGATAAAAAATAAATGAAATGG
CCCCAGCCAGCCAGTCCCAGGAGTTTTCTACAAGTCTTGAATCTGGCAGATGATGAGGTGAAGGT
GACAGTGGTGGAAATGAAAACAATTCTCTGTTGATAGAGTCCATCAAATCCTTTTCAGAAAAACCCACAC
TATTCAAAACCTGCACCTGAAAACAAAAAGCCAGGATTTTCACTTCCACCTGAAATATCACAATTTGTCTC
TCTACACTGAGCATTCTGTGCAGGAGAAGAACTGGTACAGTCTTGTCAATTCGTAAGATGGGAACAGTAT
CTCCAGCATGATGGTAAAGGATACAGAAAGCAGAAACAACCAATGGGATGACAACCGTGAGGTTTGTAAAC
ACTTTGCATAAAGATGTCAACATCTCCCTGAGTACAGATACCTCTCTCAATGTTGGTGAAGACTATGGTG
TGTCTGCTTATAGAAGTGTGCAAGAGGAGAATACCCTGCAGTGCAGTGTAGAACAGAAGATAAGAACTT
TTCTCTGAATTTGGTCTTCTAGACTTTGGTGCAGCATATCTGTTTGTATTACTAATAACACCAATCAG
GGTCTTACGGCCTGGAAGATTGAAGACATTCAGCCAACAAAATGTCCATTGCGTGGCAGCTACCACAAT
ATGCCCTGGTTACAGCTGGGGAGGTCTGTTCTCTGTGCAGGCTTGAGTTTTCTATTCTCAGGCTCC
CTCTAGCATGAAATCTGTGCTCCAGGCAGCTTGGCTATTGACAATTGCAGTTGGGAATATCATCGTGCTT
GTTGTGGCACAGTTTCACTGGCCTGGTACAGTGGGCCGAATTCATTTTGTCTTCTGCCTCCTGCTGGTGA
TCTGCCTGATCTTCTCCATCATGGGCTACTACTATGTTCTCTGTAAGACAGAGGATATGCGGGGTCCAGC
AGATAAGCACATTCCTCACATCCAGGGGAACATGATCAAACCTAGAGACCAAGAAGACAAAACCTC

ACGCGTACGCGGCCGCTCGAG – GFP Tag – GTTTAA

Protein Sequence: >RG228544 representing NM_001145998
 Red=Cloning site Green=Tags(s)

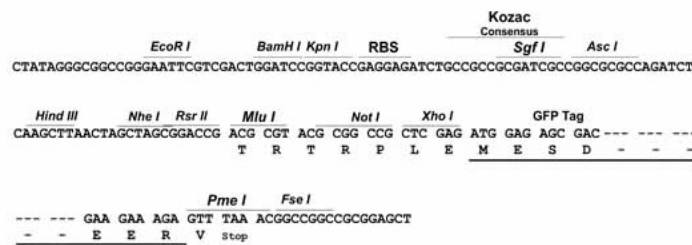
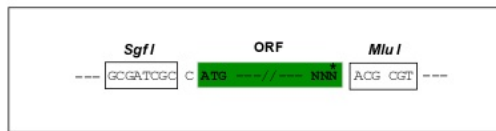
MNPFQKNESKETLFSVPSIEEVPPRPPSPPKKPSPTICGSNYPLSIAFIVVNEFCERFSYGMKAVLILY
 FLYFLHWNEDTSTSIYHAFSSLCYFTPI LGAAIADSWLGKFKVLSLIGLSLIALGTGGIKPCVAAFGGDQ
 FEEKHAEERTRYFSVFYLSINAGSLISTFITPMLRGDVQCFGEDCYALAFGVPGLLMVIALVVFAMGSKI
 YNKPPPEGNIVAQVFKCIWFAISNRFKNRSGDIPKRQHWLDWAAEKYPKQLIMDVKALTRVLFYIPLPM
 FWALLDQQGSRWTLQAIRMNRNLGFFVLQPDQMQLNPLLVLIFIPLDFVVIYRLVSKCGINFSSLRKMA
 VGMILACLAFAVAAAVEIKINEMAPAQGPQEVFLQVLNLADDEVKVTVVGNENNSLLIESIKSFQKTPH
 YSKLHLKTKSQDFHFHLKYHNL SLYTEHSVQEKNWYSLVIREDGNSISSMMVKDTERRTNGMTTVRFVN
 TLHKDVNISLSTDTSLNVGEDYGVSAVRTVQRGEYPAVHCRTEDKNFSLNLGLLDFGAAYLFVITNNTNQ
 GLQAWKIEDIPANKMSIAWQLPQYALVTAGEVMFSVTGLEFSYSQAPSSMKSVLQAAWLLTIAVGNIIVL
 VVAQFSGLVQWAEFILFSCLLLICLIFSIMGYYYVPVKTEDMRGPADKHIPHIQGNMIKLETKKTKL

TRTRPLE - GFP Tag - V

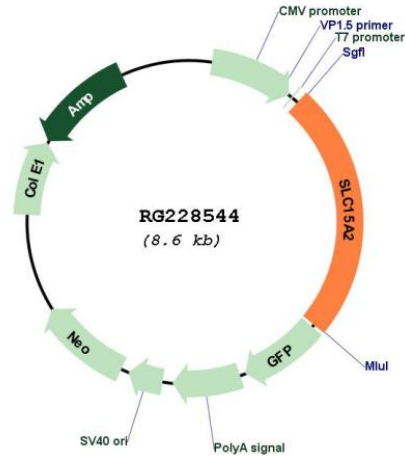
Restriction Sites: SgfI-MluI

Cloning Scheme:

Cloning sites used for ORF Shuttling:



Plasmid Map:



ACCN: NM_001145998

ORF Size: 2094 bp

OTI Disclaimer: The molecular sequence of this clone aligns with the gene accession number as a point of reference only. However, individual transcript sequences of the same gene can differ through naturally occurring variations (e.g. polymorphisms), each with its own valid existence. This clone is substantially in agreement with the reference, but a complete review of all prevailing variants is recommended prior to use. [More info](#)

OTI Annotation: This clone was engineered to express the complete ORF with an expression tag. Expression varies depending on the nature of the gene.

Components: The ORF clone is ion-exchange column purified and shipped in a 2D barcoded Matrix tube containing 10ug of transfection-ready, dried plasmid DNA (reconstitute with 100 ul of water).

Reconstitution Method:

1. Centrifuge at 5,000xg for 5min.
2. Carefully open the tube and add 100ul of sterile water to dissolve the DNA.
3. Close the tube and incubate for 10 minutes at room temperature.
4. Briefly vortex the tube and then do a quick spin (less than 5000xg) to concentrate the liquid at the bottom.
5. Store the suspended plasmid at -20°C. The DNA is stable for at least one year from date of shipping when stored at -20°C.

RefSeq: [NM_001145998.2](#)

RefSeq Size: 5430 bp

RefSeq ORF: 2097 bp

Locus ID: 6565

UniProt ID: [Q16348](#)

Cytogenetics: 3q13.33

Protein Families: Transmembrane

Gene Summary: The mammalian kidney expresses a proton-coupled peptide transporter that is responsible for the absorption of small peptides, as well as beta-lactam antibiotics and other peptide-like drugs, from the tubular filtrate. This transporter, SLC15A2, belongs to the same gene family as SLC15A1 (MIM 600544), the proton-coupled peptide transporter found in the small intestine (Liu et al, 1995 [PubMed 7756356]).[supplied by OMIM, Feb 2011]