

Product datasheet for **RG228543**

SLC7A2 (NM_001164771) Human Tagged ORF Clone

Product data:

Product Type:	Expression Plasmids
Product Name:	SLC7A2 (NM_001164771) Human Tagged ORF Clone
Tag:	TurboGFP
Symbol:	SLC7A2
Synonyms:	ATRC2; CAT2; HCAT2
Mammalian Cell Selection:	Neomycin
Vector:	pCMV6-AC-GFP (PS100010)
E. coli Selection:	Ampicillin (100 ug/mL)



[View online »](#)

**ORF Nucleotide
Sequence:**

>RG228543 representing NM_001164771
 Red=Cloning site Blue=ORF Green=Tags(s)

TTTTGTAATACGACTCACTATAGGGCGGCCGGAATTCGTCGACTGGATCCGGTACCGAGGAGATCTGCC
 GCC**GCGATCGCC**

ATGAAGATAGAAACAAGTGGTTATAACTCAGACAACTAATTTGTCGAGGTTTATTGGAACACCTGCC
 CACCGGTTTGCAGACGAAGTTTCTCCTGTCGCCCTTCGTGACAGCTCAGAATGATTCCTTGACAGCCGC
 GCTGACCTTTGCCGATGTCTGATCCGGAGAAAAATCGTGACCCTGGACAGTCTAGAAGACACCAATTA
 TGCCGCTGCTTATCCACCATGGACCTCATTGCCCTGGGCGTTGGAAGCACCCCTGGGGCCGGGTTTATG
 TCCTCGTGGGGAGGTGGCCAAGGCAGACTCGGGCCCCAGCATCGTGGTGTCTTCTCATTGCTGCCCT
 GGCTTCAGTGATGGCTGGCCTCTGCTATGCCGAATTTGGGGCCCGTGTCCCAAGACGGGGTCTGCATAT
 TTGTACACCTACGTGACTGTCCGAGAGCTGTGGCCTTCATCACTGGCTGGAATCTCATTTTATCGTATG
 TGATAGGTACATCAAGTGTGCAAGAGCCTGGAGTGGCACCTTTGATGAACCTCTTAGCAACAGATTGG
 TCAGTTTTTGAGGACATACTTCAGAATGAATTACTGGTCTTGCAAGAATATCCCGATTTTTTGTCTGTG
 TGCCCTATATTACTTCTAGCAGGCTTTTTGTCTTTGGAGTAAAAGAGTCTGCTTGGGTGAATAAAGTCT
 TCACAGCTGTTAATATTCTCGTCCTTCTGTTTGTGATGGTTGCTGGGTTTGTGAAAGGAAATGTGGCAAA
 CTGGAAGATTAGTGAAGAGTTTCTCAAAAATATATCAGCAAGTCCAGAGAGCCACCTTCTGAAAACGGA
 ACAAGTATCTATGGGGCTGGTGGCTTTATGCCCTTATGGCTTACGGGAACGTTGGCTGGTCTGCAACTT
 GCTTTTATGCCTTTGTGGGATTTGACTGCATTGCAACAACCTGGTGAAGAAGTTCGGAATCCCCAGAAAGC
 TATCCCATTTGGAATTTGACGCTTTTGTCTTGTGCTTATGGCCTATTTGGGGTCTCTGCAGCTTTA
 ACATTTATGATGCCGACTACCTCCTCGATGAAAAAGCCCCCTCCTGTAGCCTTGAATATGTGGGAT
 GGGTCCCTGCCAAATATGTCGTCGAGCTGGTTCTCTGCGCCTTGCAACAAGTCTTCTTGGATCCAT
 TTTCCAATGCCTCGTGAATCTATGCTATGGCGGAGGATGGGTTGCTTTTCAAATGTCTAGCTCAAATC
 AATTCCAAAACGAAGACACCAATAATTGCTACTTTATCATCGGGTGCAGTGGCAGCTTGTGATGGCCTTTC
 TGTGTTGACCTGAAGGCGCTTGTGGACATGATGTCCATTGGCACACTCATGGCCTACTCTCTGGTGGCAGC
 CTGTGTTCTCATCCTCAGGTACCAGCCTGGCTTATCTTACGACCAGCCAAATGTTCTCCTGAGAAAAGAT
 GGTCTGGGATCGTCTCCAGGGTAACCTCGAAGAGTGAGTCCAGGTACCATGCTGCAGAGACAGGGCT
 TCAGCATGCGGACCCTTCTGCCCCTCCCTTCTGCCAACACAGCAGTACAGCTTCTCTCGTGAAGCTTCT
 GGTAGGATTCCTAGCTTTCCTCGTGTGGGCTGAGTGTCTTGACCACTACGGAGTTCATGCCATCACC
 AGGCTGGAGGCCCTGGAGCCTCGCTCTCCTCGCGCTGTTTCTTGTCTCTCGTTGCCATCGTTCTACCA
 TCTGGAGGCAGCCCAGAATCAGCAAAAAGTAGCCTTCATGGTTCCATTCTTACCATTTTTGCCAGCGTT
 CAGCATCTTGGTGAACATTTACTTGATGGTCCAGTTAAGTGCAGACACTGGGTCAGATTAGCATTGG
 ATGGCAATTGGCTTCTGATTTACTTTTCTTATGGCATTAGACACAGCCTGGAGGGTCACTGAGAGATG
 AAAACAATGAAGAAGATGCTTATCCAGACAACGTTTCATGCAGCAGCAGAAGAAAAATCTGCCATTCAAGC
 AAATGACCATCACCAAGAAATCTCAGTTCACCTTTCATATTCCATGAAAAGACAAGTGAATTC

ACGCGTACGCGGCCGCTCGAG – GFP Tag – GTTTAA

Protein Sequence: >RG228543 representing NM_001164771
 Red=Cloning site Green=Tags(s)

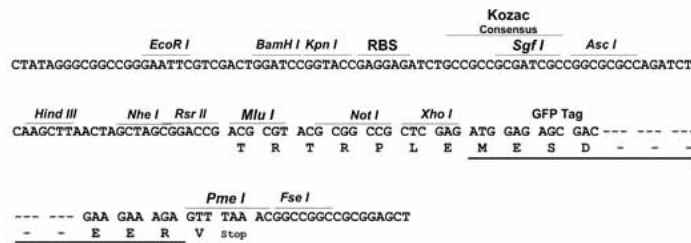
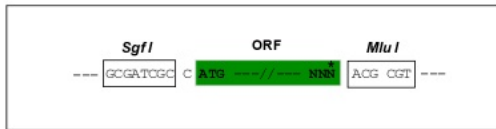
MKIETSGYNSDKLICRGFIGTPAPPVCDKFLSPSSDVRMIPCRAALTFARCLIRRKIVTLDLSLEDTKL
 CRCLSTMDLIALGVGSTLGAGVYVLAGEVAKADSGPSIVVSFLIAALASVMAGLCYAEFGARVPKTSAY
 LYTYVTYVWELWAFITGWNLILSYVIGTSSVARAWSGTDFDELLSKQIGQFLRTYFRMNYTGLAEYDFFAV
 CLILLLAGLLSFGVKESAWVNKVFVAVNILLVLLFVMVAGFVKGNVANWKISEEFLKNISASAREPPSENG
 TSIYGAGGFMPYGTGLTLAGAATCFYAFVGFDCIATTGEEVRNPQKAIPIGIVTSLLVCFMAYFGVSAAL
 TLMMPYLLDEKSPLPVAFEYVWGPAKYVVAAGSLCALSTSLLSIFMPRVIYAMAEDGLLFKCLAQI
 NSKTPTPIIATLSSGAVAALMAFLFDLKLALVDMMSIGTLMAYSLVAACVLILRYQPGLSYDQPKCSPEKD
 GLGSSPRVTSKSESQVTMLQRQGF SMRTLFCPSLLPTQQSASLVSFLVGF LAFVLGLSVLTTYGVHAIT
 RLEAWSLALLALFLVFAIVLTIWRQPQNQQVAFMVPFLPFLPAFSILVNIYLMVQLSADTWVRF SIW
 MAIGFLIYFSYGI RSHLEGLR DENNEEDAYPDNVHAAAEEKSAIQANDHHP RNLSSPFI FHEKTSEF

TRTRPLE - GFP Tag - V

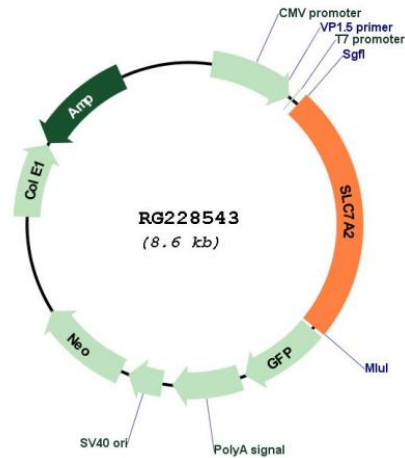
Restriction Sites: SgfI-MluI

Cloning Scheme:

Cloning sites used for ORF Shuttling:



Plasmid Map:



ACCN: NM_001164771

ORF Size: 2094 bp

OTI Disclaimer: The molecular sequence of this clone aligns with the gene accession number as a point of reference only. However, individual transcript sequences of the same gene can differ through naturally occurring variations (e.g. polymorphisms), each with its own valid existence. This clone is substantially in agreement with the reference, but a complete review of all prevailing variants is recommended prior to use. [More info](#)

OTI Annotation: This clone was engineered to express the complete ORF with an expression tag. Expression varies depending on the nature of the gene.

Components: The ORF clone is ion-exchange column purified and shipped in a 2D barcoded Matrix tube containing 10ug of transfection-ready, dried plasmid DNA (reconstitute with 100 ul of water).

Reconstitution Method:

1. Centrifuge at 5,000xg for 5min.
2. Carefully open the tube and add 100ul of sterile water to dissolve the DNA.
3. Close the tube and incubate for 10 minutes at room temperature.
4. Briefly vortex the tube and then do a quick spin (less than 5000xg) to concentrate the liquid at the bottom.
5. Store the suspended plasmid at -20°C. The DNA is stable for at least one year from date of shipping when stored at -20°C.

RefSeq: [NM_001164771.2](#)

RefSeq Size: 7580 bp

RefSeq ORF:	2097 bp
Locus ID:	6542
UniProt ID:	P52569
Cytogenetics:	8p22
Protein Families:	Druggable Genome, Transmembrane
Gene Summary:	The protein encoded by this gene is a cationic amino acid transporter and a member of the APC (amino acid-polyamine-organocation) family of transporters. The encoded membrane protein is responsible for the cellular uptake of arginine, lysine and ornithine. Three transcript variants encoding different isoforms have been found for this gene. [provided by RefSeq, Oct 2011]