

Product datasheet for **RG228529**

RED1 (ADARB1) (NM_001160230) Human Tagged ORF Clone

Product data:

Product Type:	Expression Plasmids
Product Name:	RED1 (ADARB1) (NM_001160230) Human Tagged ORF Clone
Tag:	TurboGFP
Symbol:	RED1
Synonyms:	ADAR2; DRABA2; DRADA2; NEDHYMS; RED1
Mammalian Cell Selection:	Neomycin
Vector:	pCMV6-AC-GFP (PS100010)
E. coli Selection:	Ampicillin (100 ug/mL)



[View online »](#)

ORF Nucleotide Sequence:

>RG228529 representing NM_001160230
 Red=Cloning site Blue=ORF Green=Tags(s)

TTTTGTAATACGACTCACTATAGGGCGGCCGGGAATTCGTCGACTGGATCCGGTACCGAGGAGATCTGCC
 GCC**CGGATCGCC**

ATGGATATAGAAGATGAAGAAAACATGAGTTCAGCAGCACTGATGTGAAGGAAAACCGCAATCTGGACA
 ACGTGTCCCCAAGGATGGCAGCACACCTGGGCCTGGCGAGGGCTCTCAGCTCTCCAATGGGGTGGTGG
 TGGCCCCGGCAGAAAGCGGCCCTTGAGAGGGGACGAAATGGCCACTCCAAGTACCGCTGAAGAAAAGG
 AGGAAAACACCAGGGCCCGTCTCCCAAGAACGCCCTGATGCAGCTGAATGAGATCAAGCCTGGTTTGC
 AGTACACACTCTGTCCCAGACTGGGCCGTGCACGCGCCTTTGTTTGTTCATGTCTGTGGAGGTGAATGG
 CCAGGTTTTTGGGGCTCTGGTCCACAAAAGAAAAGGCAAACTCCATGCTGCTGAGAAGGCCCTTGAGG
 TCTTTCGTTTCAGTTTCTAATGCCTCTGAGGCCACCTGGCCATGGGGAGGACCTGTCTGTCAACACGG
 ACTTCACATCTGACCAGGCCGACTTCCCTGACACGCTCTTCAATGGTTTTGAAACTCCTGACAAGCGGA
 GCCTCCCTTTTACGTGGGCTCCAATGGGGATGACTCCTCAGTCCAGCGGGGACCTCAGCTTGTCTGCT
 TCCCCGGTGCCTGCCAGCCTAGCCAGCCTCCTCTCCCTGCTTACCACCATTCCACCCCGGAGTGGGA
 AGAATCCCGTGATGATCTTGAACGAACTGCGCCAGGACTCAAGTATGACTTCTCTCCGAGAGCGGGGA
 GAGCCATGCCAAGAGCTTCGTATGTCTGTGGTGGTGGATGGTCAAGTCTTTGAAGGCTCGGGGAGAAAAC
 AAGAAGCTTGCCAAGGCCGGGCTGCGCAGTCTGCCCTGGCCGCATTTTAACTTGCACTTGGATCAGA
 CGCCATCTCGCCAGCCTATCCCAAGTGGGCTTTCAGCTGCATTTACCGCAGGTTTTAGCTGACGCTGT
 CTCACGCTGGTCTGGTAAGTTTGGTACCTGACCGACAATCTCTCCCTCACGCTCGCAGAAAA
 GTGCTGGCTGGAGTCGTCATGACAACAGGCACAGATGTTAAAGATGCCAAGGTGATAAGTGTCTACAG
 GAACAAAATGTATTAATGGTGAATACATGAGTGATCGTGGCCTTGCAATTAATGACTGCCATGCAGAAAT
 AATATCTCGGAGATCCTTGCTCAGATTTCTTTATACACAACCTGAGCTTTACTTAAATAACAAGATGAT
 CAAAAAAGATCCATCTTTCAGAAATCAGAGCGAGGGGGTTTAGGCTGAAGGAGAATGTCCAGTTTCATC
 TGTACATCAGCACCTCTCCCTGTGGAGATGCCAGAATCTTCTCACCACATGAGCCAATCCTGGAAGAACC
 AGCAGATAGACACCCAAATCGTAAAGCAAGAGGACAGCTACGGACCAAAATAGAGTCTGGTGGGGGACG
 ATTCCAGTGCCTCCAATGCGAGCATCAAACGTGGGACGGGGTGTGCAAGGGGAGCGGCTGCTCACCA
 TGTCTGCAGTGACAAGATTGCACGCTGGAACGTGGTGGGATCCAGGGATCCCTGCTCAGCATTTCGT
 GGAGCCATTTACTTCTCGAGCATCATCTGGGACGCTTTACCACGGGGACCACCTTCCAGGGCCATG
 TACCAGCGGATCTCCAACATAGAGGACCTGCCACCTCTACACCCTCAACAAGCCTTTGCTCAGTGGCA
 TCAGCAATGCAGAAGCACGGCAGCCAGGGAAGGCCCCCAACTTCAAGTGTCAACTGGACGGTAGGCGACTC
 CGCTATTGAGGTCAACGCCACGACTGGGAAGGATGAGCTGGGCCGCGCTCCCGCTGTGTAAGCAC
 GCGTTGTACTGTCTGGATGCGTGTGCACGGCAAGGTTCCCTCCCACTTACTACGCTCCAAGATTACCA
 AGCCCAACGTGTACCATGAGTCCAAGCTGGCGGCAAAAGGAGTACCAGGCCGCAAGGTACAC

AG**CGGACCG**ACGCGTACGCGGCCGCTCGAG - GFP Tag - GTTTAA

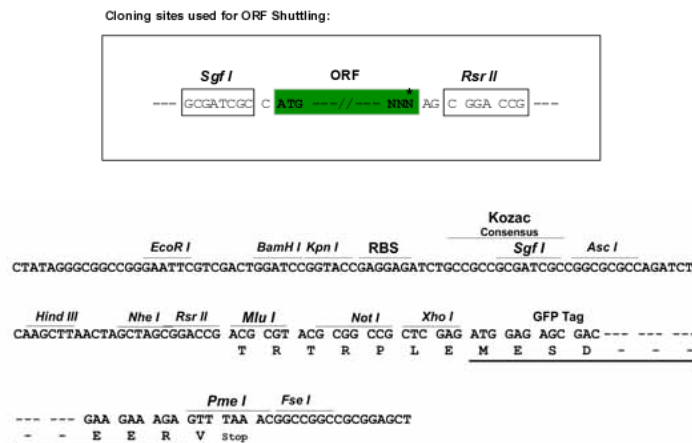
Protein Sequence: >RG228529 representing NM_001160230
Red=Cloning site Green=Tags(s)

MDIEDEENMSSSTDVKENRNLDNVSPKDGSTPGPGECSQLSNGGGGGPGRKRPLEEGSNHGSKYRLKKR
 RKTPGVP LPKNALMQLNEIKPGLQYTL L SQTGPVHAPL FVMSVEVNGQVFEGSGPTKKKAKLHAAEKALR
 SFVQFPNASEAHLAMGR T LSVNTDFTSDQADFPD T L FNGFETPDKAEPF YVGSNGD DS FSSSGDLSLSA
 SPVPASLAQPP L PVP L PFP PPSGKNPVMILNELRPGLKYDFLSESGESHAKSFVMSVVVDGQF FEGSGRN
 KKLAKARAAQSALAAIFNLHLDQTPSRQPIPSEGLQLHL PQVLADAVSRLVLGKFDLTDNFSSPHARRK
 VLAGVVM T TGT DVKDAKVISVSTG T KCI NGEYMSDRGLALNDCHAEIISRRLRFLYTQLELYLNNKDD
 QKRSIFQKSERGGFRLKENVQFHLYISTSPCGDARIFSPHEPILEPADRHPNRKARGQLRTKIESGEGT
 IPVRSNAIQTWDGV L QGERLL T MSCSDKIARWNVVG IQGSLLSIFVEPIYFSSII L GSLYHGDHL SRAM
 YQRISNIEDLPPLYTLNKPLLSGISNAEARQPGKAPNFSVNWTVGDSAIEVINATTGKDELGRASRLCKH
 ALYCRWMRVHGKVP SHLLRSKITKPNVYHESKLA AKEYQAAKVH

SGPTRRRLE - GFP Tag - V

Restriction Sites: SgfI-RsrII

Cloning Scheme:



ACCN: NM_001160230

ORF Size: 2022 bp

OTI Disclaimer: The molecular sequence of this clone aligns with the gene accession number as a point of reference only. However, individual transcript sequences of the same gene can differ through naturally occurring variations (e.g. polymorphisms), each with its own valid existence. This clone is substantially in agreement with the reference, but a complete review of all prevailing variants is recommended prior to use. [More info](#)

OTI Annotation: This clone was engineered to express the complete ORF with an expression tag. Expression varies depending on the nature of the gene.

Components: The ORF clone is ion-exchange column purified and shipped in a 2D barcoded Matrix tube containing 10ug of transfection-ready, dried plasmid DNA (reconstitute with 100 ul of water).

Reconstitution Method:

1. Centrifuge at 5,000xg for 5min.
2. Carefully open the tube and add 100ul of sterile water to dissolve the DNA.
3. Close the tube and incubate for 10 minutes at room temperature.
4. Briefly vortex the tube and then do a quick spin (less than 5000xg) to concentrate the liquid at the bottom.
5. Store the suspended plasmid at -20°C. The DNA is stable for at least one year from date of shipping when stored at -20°C.

RefSeq: [NM_001160230.2](#)

RefSeq Size: 3485 bp

RefSeq ORF: 2025 bp

Locus ID: 104

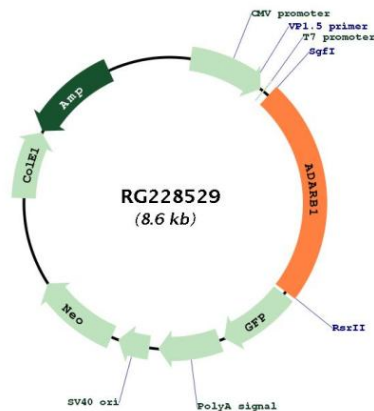
UniProt ID: [P78563](#)

Cytogenetics: 21q22.3

Protein Families: Druggable Genome

Gene Summary: This gene encodes the enzyme responsible for pre-mRNA editing of the glutamate receptor subunit B by site-specific deamination of adenosines. Studies in rat found that this enzyme acted on its own pre-mRNA molecules to convert an AA dinucleotide to an AI dinucleotide which resulted in a new splice site. Alternative splicing of this gene results in several transcript variants, some of which have been characterized by the presence or absence of an ALU cassette insert and a short or long C-terminal region. [provided by RefSeq, Jul 2008]

Product images:



Circular map for RG228529