

Product datasheet for **RG228526**

CHFR (NM_001161344) Human Tagged ORF Clone

Product data:

Product Type:	Expression Plasmids
Product Name:	CHFR (NM_001161344) Human Tagged ORF Clone
Tag:	TurboGFP
Symbol:	CHFR
Synonyms:	RNF116; RNF196
Mammalian Cell Selection:	Neomycin
Vector:	pCMV6-AC-GFP (PS100010)
E. coli Selection:	Ampicillin (100 ug/mL)



[View online »](#)

ORF Nucleotide
Sequence:

>RG228526 representing NM_001161344
Red=Cloning site Blue=ORF Green=Tags(s)

TTTTGTAATACGACTCACTATAGGGCGGCCGGGAATTCGTCGACTGGATCCGGTACCGAGGAGATCTGCC
GCC**CGGATCGCC**

ATGGAGCGGCCCGAGGAAGGCAAGCAGTCGCCGCCCGCAGCCCTGGGGACGGCTCCTGCGTCTGGGCG
CGGAGGAGGGCGAGCCGACGTCCTCCTGAGGAAGCGGGAGTGGACCATCGGGCGGAGACGAGGTTGCGA
CCTTTCCTTCCCCAGCAATAAACTGGTCTCTGGAGATCACTGTAGAATTGTAGTGGATGAAAAATCAGGT
CAGGTGACACTGGAAGATACCAGCACCAGTGAACAGTGATTAACAAGCTGAAGGTTGTTAAGAAGCAGA
CATGCCCTTTACAGACTGGGGATGTCATCTACTTGGTGTACAGGAAGAATGAACCGGAACACAACGTGGC
ATACCTCTATGAATCTTTAAGTAAAAGCAAGGCATGACACAAGAATCCTTTGAAGCTAACAAAGGAAAAAT
GTGTTCCATGGGACCAAGATACCTCAGGTGCAGGTGCAGGGCGAGGGGCCGATCCCCGGTCCCTCCGT
CGTCGCCCCCACTCAGGTGTGCTTTGAGGAACACAGCCATCAACATCGACGTCAGACCTTTCCCCAC
AGCCTCGGCCTCTCCACGGAGCCTTCTCCTGCAGGGCGAGAGCGTTCCAGTTGTGGGTCTGGGGGT
GGTGGCATCTCCCTAAAGGAAGTGGTCCCTCTGTGGCAAGTGTGAAGTCTCCAGCTTTGCCTCAGCTC
TCCCAGACAGAAAGACTGCGTCCTTTTCGTCGTTGGAACCCAGGATCAGGAGGATTTGGAGCCCGTGAA
GAAGAAAATGAGAGGAGATGGGGACCTTGACCTGAACGGGCAGTTGTTGGTGCACAACCCGCTAGAAAAT
GCCCAAACCGTCCACGAGGACGTCAGAGCAGCGGCTGGGAAGCCAGACAAGATGGAGGAGACGCTGACAT
GCATCATCTGCCAGGACCTGCTGCACGACTGCGTGAGTTTGACGCCCTGCATGCACACGTTCTGCGCGGC
TTGCTACTCGGGCTGGATGGAGCGCTCGTCCCTGTGCTACCTGCCGCTGTCCCGTGGAGCGGATCTGT
AAAAACCACATCCTCAACAACCTCGTGAAGCATACCTCATCCAGCATCCAGACAAGAGTCGCAGTGAAG
AAGATGTGCAAGTATGGATGCCAGGAATAAAATCACTCAAGCATGCTGCAGCCAAAGTCAGGGCGGTC
TTTTTCTGATGAAGAAGGGAGTTTCAGAGGACCTGCTGGAGCTGTCAGACGTTGACAGTGAGTCTCAGAC
ATTAGCCAGCCATACGTCGTGTGCCGGCAGTGTCTGAGTACAGAAGGCAGGCGGCGCAGCCTCCCCACT
GCCCAGCACCCGAGGGCGAGCCAGGAGCCACAGGCCCTGGGGGATGCACCCTCCACGTCGCTCAGCCT
GACGACAGCAGTCCAGGATTACGTGTGCCCTCTGCAAGGAAGCCACGCCCTGTGCACCTGCTGTTCCAG
CCCATGCCCGACCGAGAGCGGAGCGGAGCAGGACCCGCGTGTGCCCCCTCAGCAGTGTGCGGTCTGCC
TGCAGCCTTTCTGCCACCTGTACTGGGGCTGCACCCGACCGGCTGCTACGGCTGCCTGGCCCCGTTTTG
TGAGCTCAACCTGGGTGACAAGTGTCTGGACGGCGTGCTGAACAACAACAGCTACGAGTCAGACATCCTG
AAGAATTACCTGGCAACCAGAGGTTTGACATGGAAAAACATGTTGACCGAGACCTCGTGGCTCTCCAGC
GGGGAGTGTCTGCTGTCTGATTACAGAGTCACGGGAGACACCGTTCTGTGTTACTGCTGTGGCCTGCG
CAGCTTCCGTGAGCTGACCTATCAGTATCGGCAGAACATTCTGTCTCCGAGTTGCCAGTGGCCGTAACA
TCCCGTCTGACTGCTACTGGGGCCGTAACCGCCACTCAGGTGAAAGCTCACCACGCCATGAAATTCA
ATCATATCTGTGAACAGACAAGGTTCAAAAAC

ACGCGTACGCGGCCGCTCGAG - GFP Tag - GTTTAA

Protein Sequence: >RG228526 representing NM_001161344
 Red=Cloning site Green=Tags(s)

```
MERPEEGKQSPPPQPWGRLLRLGAEEGEPHVLLRKREWTIGRRRGCDL SFPSNKL VSGDHCRIVVDEKSG
QVTLEDTSTSGTVINKLKVVKKQTCPLQTDGVIYL VYRKNEPEHNVAYL YESLSEKQGMTQESFEANKEN
VFHGKDTSGAGAGRGADPRVPPSSPATQVCFEEPQPSTSTSDLFPTASASSTEPSPAGRERSSSCGSGG
GGISPKGSGPSVASDEVSSFASALPDRKTA SFSSLEPQDQEDLEPVKKKMRGDGDL DLNGQLLVAQPRRN
AQTVHEDVRAAAGKPKMEETLTCIICQDLLHDCVSLQPCMH TFAACYSGWMERSSLCPTCRCPVERIC
KNHILNNLVEAYLIQHPDKSRSEEDVQSM DARNKITQDMLQPKVRRSF SDEEGSSEDLLELSDVDSESSD
ISQPYVVCRCQCEYRRQAAQPPHCPAPEGEPGAPQALGDAPSTSVSLTTAVQDYVCP LQGSHALCTCCFQ
PMPDRAEREQDPRVAPQQCAVCLQPFCHL YWGC TRTGCYGLAPFCELNLGDKCLDGLVNNNSYESDIL
KNYLATRGLTWKNMLTESLVALQRGVFL LSDYRVTDGTVL CYCCGLRSFRELTYQRQNI PASELPVAVT
SRPDCYWGRNCR TQVKAHHAMKFNHICEQTRFKN
```

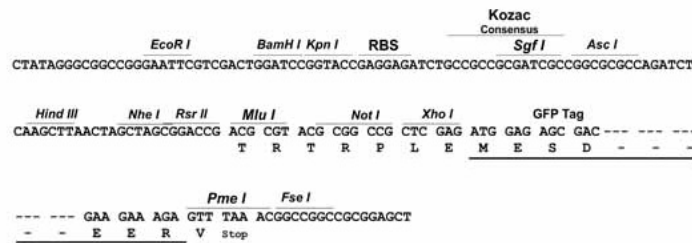
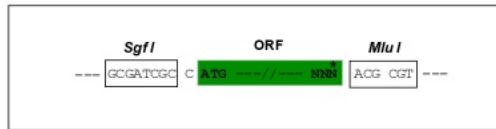
TRTRPLE - GFP Tag - V

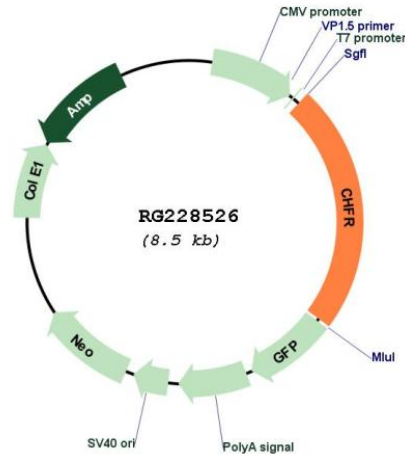
Restriction Sites:

SgfI-MluI

Cloning Scheme:

Cloning sites used for ORF Shuttling:



Plasmid Map:


ACCN: NM_001161344

ORF Size: 1992 bp

OTI Disclaimer: The molecular sequence of this clone aligns with the gene accession number as a point of reference only. However, individual transcript sequences of the same gene can differ through naturally occurring variations (e.g. polymorphisms), each with its own valid existence. This clone is substantially in agreement with the reference, but a complete review of all prevailing variants is recommended prior to use. [More info](#)

OTI Annotation: This clone was engineered to express the complete ORF with an expression tag. Expression varies depending on the nature of the gene.

Components: The ORF clone is ion-exchange column purified and shipped in a 2D barcoded Matrix tube containing 10ug of transfection-ready, dried plasmid DNA (reconstitute with 100 ul of water).

Reconstitution Method:

1. Centrifuge at 5,000xg for 5min.
2. Carefully open the tube and add 100ul of sterile water to dissolve the DNA.
3. Close the tube and incubate for 10 minutes at room temperature.
4. Briefly vortex the tube and then do a quick spin (less than 5000xg) to concentrate the liquid at the bottom.
5. Store the suspended plasmid at -20°C. The DNA is stable for at least one year from date of shipping when stored at -20°C.

RefSeq: [NM_001161344.1](#), [NP_001154816.1](#)

RefSeq Size: 3291 bp

RefSeq ORF: 1995 bp

Locus ID: 55743

UniProt ID: [Q96EP1](#)

Cytogenetics: 12q24.33

Protein Families: Druggable Genome

Gene Summary: This gene encodes an E3 ubiquitin-protein ligase required for the maintenance of the antepause checkpoint that regulates cell cycle entry into mitosis and, therefore, may play a key role in cell cycle progression and tumorigenesis. The encoded protein has an N-terminal forkhead-associated domain, a central RING-finger domain, and a cysteine-rich C-terminal region. Alternatively spliced transcript variants that encode different protein isoforms have been described. [provided by RefSeq, Mar 2014]