

## Product datasheet for **RG228516**

### ALS (IGFALS) (NM\_001146006) Human Tagged ORF Clone

#### Product data:

Product Type:	Expression Plasmids
Product Name:	ALS (IGFALS) (NM_001146006) Human Tagged ORF Clone
Tag:	TurboGFP
Symbol:	IGFALS
Synonyms:	ACLSL; ALS
Mammalian Cell Selection:	Neomycin
Vector:	pCMV6-AC-GFP (PS100010)
E. coli Selection:	Ampicillin (100 ug/mL)



[View online »](#)

**ORF Nucleotide Sequence:**

>RG228516 representing NM\_001146006  
 Red=Cloning site Blue=ORF Green=Tags(s)

TTTTGTAATACGACTCACTATAGGGCGGCCGGAATTCGTCGACTGGATCCGGTACCGAGGAGATCTGCC  
 GCC**CGGATCGCC**

ATGGCCCTGAGGAAAGCGGGTGACCTCGAGCCTCAGTTACACCTGAGCGCCGCTCCGGCTGTGCTGGT  
 ATCAGGCTCACTCGGGCAGAGCCCTCCTCGGGCCGCTCCCAAGCCTCTCCCCCGCAGGAGGCCCTGGC  
 CCTGGCGCTGCTGCTGCTCCTGGGTGGCACTGGGCCCCCGCAGCCTGGAGGGAGCAGACCCCGGAACG  
 CCGGGGAAGCCGAGGGCCAGCGTGCCCGGCCGCTGTGCTGCAGCTACGATGACGACGCGGATGAGC  
 TCAGCGCTTTCTGCAGCTCCAGGAACCTCACGCGCCTGCCTGATGGAGTCCCGGGCGGCACCCAAGCCCT  
 GTGGCTGGACGGCAACAACCTCTCGTCCGTCCTCCCGGCAGCCTTCCAGAACCTCTCCAGCCTGGGCTTC  
 CTAACCTGCAGGGCGGCCAGCTGGGCAGCCTGGAGCCACAGGCGCTGCTGGGCCAGAGAACCTGTGCC  
 ACCTGCACCTGGAGCGGAACAGCTGCGCAGCCTGGCACTCGGCACGTTTGCACACACGCCCGCGCTGGC  
 CTCGCTCGGCCTCAGCAACAACCGTCTGAGCAGGCTGGAGGACGGGCTCTTCGAGGGCCTCGGCAGCCTC  
 TGGGACCTCAACCTCGGCTGGAATAGCCTGGCGGTGCTCCCCGATGCGGGGTTCCGCGGCCCTGGGACGC  
 TGGCGAGCTGGTGTGGCGGGCAACAGGCTGGCTACCTGCAGCCCGCGCTCTTCAGCGGCTGGCCGA  
 GCTCCGGGAGCTGGACCTGAGCAGGAACGCGCTGCGGGCCATCAAGGCAACGTGTTCTGTCAGCTGCC  
 CGGCTCCAGAACTCTACCTGGACCGCAACCTCATCGCTGCCGTGGCCCCGGGCGCTTCTGGGCTGA  
 AGGCGCTGCGATGGTGGACCTGTCCACAACCGCGTGGCTGGCTCCTGGAGGACAGTTCCCCGGTCT  
 GCTGGGCTGCGTGTGCTGCGGCTGTCCACAACGCCATCGCCAGCCTGCGGGCCCGCACCTTCAAGGAC  
 CTGCACCTCCTGGAGGAGCTGCAGCTGGCCACAACCGCATCCGGCAGCTGGCTGAGCGCAGCTTTGAGG  
 CGCTGGGCGAGCTTGGGTGCTCAGCTAGACCACAACCGCTCCAGGAGGTCAAGGCGGGCGCTTCTCT  
 CGGCCTACCAACGTGGCGGTATGAACCTCTCTGGGAACTGTCTCCGGAACCTTCCGGAGCAGGTGTTT  
 CGGGGCTGGGCAAGCTGCACAGCCTGCACCTGGAGGGCAGCTGCCTGGGACGCATCCGCCCGCACACT  
 TCACCGGCTCTCGGGGCTCCGCCGACTTCTCTCAAGGACAACGGCTCGTGGGATTGAGGAGCAGAG  
 CCTGTGGGGGCTGGCGGAGCTGCTGGAGCTCGACCTGACCTCCAACAGCTCACGCACCTGCCCCACCGC  
 CTCTCCAGGGCTGGGCAAGCTGGAGTACCTGCTGCTCTCCCGCAACCGCTGGCAGAGCTGCCGGCGG  
 ACGCCCTGGGCCCCGTCAGCGGGCTTCTGGCTGGACGCTCTCGACAACCGCTGGAGGATTGCCAA  
 CAGCCTCTTGGACCACTGGGGCGGCTGCGCTACCTCAGCCTCAGGAACAACCTACTGCGGACCTTACG  
 CCGCAGCCCCGGGCTGGAGCGCTGTGGCTGGAGGTAAACCCCTGGGACTGTGGCTGCCCTCTCAAGG  
 CGCTGCGGGACTTCGCCCTGCAGAACCCAGTGTGTGCCCGCTTCGTCCAGGCCATCTGTGAGGGGGA  
 CGATTGCCAGCCGCCCGGTACACCTACAACAACATCACCTGTGCCAGCCGCCCGAGGTCGTGGGGCTC  
 GACCTGCGGGACCTCAGCGAGGCCCACTTTGCTCCCTGC

**ACGCGT**ACGCGGGCCGCTCGAG – GFP Tag – GTTTAA

**Protein Sequence:**

>RG228516 representing NM\_001146006  
 Red=Cloning site Green=Tags(s)

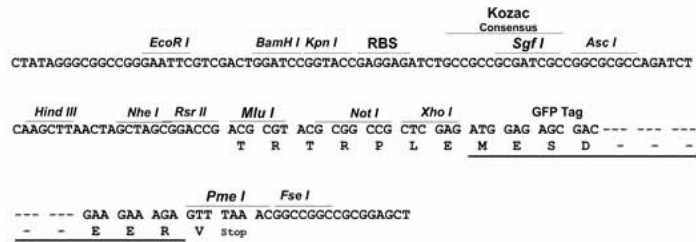
MALRKAGDLEPQFTPERFRRLCWYQAHSGRALLGPPQASPPAGGLALALLLLSWVALGPRSLEGADPGT  
 PGEAEGPACPAACVCSYDDDADELSVFCSSRNLTRLPDGVPGGTQALWLDGNNLSSVPPAAFQNLSSLGF  
 LNLQGGQLGSLEPQALLGLENLCHLHLERNQLRSLALGTFHTPALASLGLSNNRLSRLEDGLFEGLGSL  
 WDLNLGWNSLAVLPDAAFRGLGSLRELVLAGNRLAYLQPALFSGLAELRELDLARNALRAIKANVFVQLP  
 RLQKLYLDRNLIAAVAPGAFGLKALRWLDLSHNRVAGLLEDTFPGLLGLRVLRLSHNAIASLRPRTFKD  
 LHFLEELQLGHNRIQLAERSFEGLGQLEVLTLDHNQLQEYKAGAFGLTNVAVMNLSGNCLRNLPEQVF  
 RGLGKLHSLHLEGSLGRIRPHTFTGLSGLRRLFLKDNGLVGIEEQSLWGLAELLELDLTSNQLTHLPHR  
 LFQGLGKLEYLLL SRNRLAELPADALGPLQRAFVLDVSHNRLEALPNSLLAPLGRRLRYLSLRNNSLRFTT  
 PQPPGLERLWLEGNPWDCGCPKALRDFALQNPSAVPRFVQAICEGDDCQPPAYTYNNITCASPEVVGL  
 DLRDLSEAHFAPC

**TRTRPLE** – GFP Tag – V

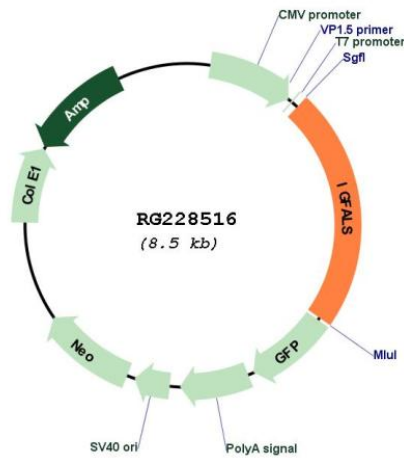
Restriction Sites: SgfI-MluI

Cloning Scheme:

Cloning sites used for ORF Shutting:



Plasmid Map:



ACCN: NM\_001146006

ORF Size: 1929 bp

<b>OTI Disclaimer:</b>	The molecular sequence of this clone aligns with the gene accession number as a point of reference only. However, individual transcript sequences of the same gene can differ through naturally occurring variations (e.g. polymorphisms), each with its own valid existence. This clone is substantially in agreement with the reference, but a complete review of all prevailing variants is recommended prior to use. <a href="#">More info</a>
<b>OTI Annotation:</b>	This clone was engineered to express the complete ORF with an expression tag. Expression varies depending on the nature of the gene.
<b>Components:</b>	The ORF clone is ion-exchange column purified and shipped in a 2D barcoded Matrix tube containing 10ug of transfection-ready, dried plasmid DNA (reconstitute with 100 ul of water).
<b>Reconstitution Method:</b>	<ol style="list-style-type: none"><li>1. Centrifuge at 5,000xg for 5min.</li><li>2. Carefully open the tube and add 100ul of sterile water to dissolve the DNA.</li><li>3. Close the tube and incubate for 10 minutes at room temperature.</li><li>4. Briefly vortex the tube and then do a quick spin (less than 5000xg) to concentrate the liquid at the bottom.</li><li>5. Store the suspended plasmid at -20°C. The DNA is stable for at least one year from date of shipping when stored at -20°C.</li></ol>
<b>RefSeq:</b>	<a href="#">NM_001146006.2</a>
<b>RefSeq Size:</b>	2282 bp
<b>RefSeq ORF:</b>	1932 bp
<b>Locus ID:</b>	3483
<b>UniProt ID:</b>	<a href="#">P35858</a>
<b>Cytogenetics:</b>	16p13.3
<b>Protein Families:</b>	Druggable Genome, Secreted Protein
<b>Gene Summary:</b>	The protein encoded by this gene is a serum protein that binds insulin-like growth factors, increasing their half-life and their vascular localization. Production of the encoded protein, which contains twenty leucine-rich repeats, is stimulated by growth hormone. Defects in this gene are a cause of acid-labile subunit deficiency, which manifests itself in a delayed and slow puberty. Three transcript variants encoding two different isoforms have been found for this gene. [provided by RefSeq, Mar 2009]