

Product datasheet for **RG228514**

SLC13A2 (NM_001145975) Human Tagged ORF Clone

Product data:

Product Type:	Expression Plasmids
Product Name:	SLC13A2 (NM_001145975) Human Tagged ORF Clone
Tag:	TurboGFP
Symbol:	SLC13A2
Synonyms:	NaCT; NaDC-1; NADC1; SDCT1
Mammalian Cell Selection:	Neomycin
Vector:	pCMV6-AC-GFP (PS100010)
E. coli Selection:	Ampicillin (100 ug/mL)



[View online »](#)

ORF Nucleotide Sequence:

>RG228514 representing NM_001145975
 Red=Cloning site Blue=ORF Green=Tags(s)

TTTTGTAATACGACTCACTATAGGGCGGCCGGAATTCGTCGACTGGATCCGGTACCGAGGAGATCTGCC
 GCC**CGGATCGCC**

ATGGCCACCTGCTGGCAGGCCCTGTGGCCTATCGCTCCTACCTGATCGTGTCTTCGTGCCATTCTCC
 TGCTGCCTCTGCCATCCTCGTCCCAAGTAAGGAGGCCTACTGCGGTATGCCATCATCCTCATGGCGCT
 CTTCTGGTGCCTGAGGCCCTGCCCTGGCCGTAAGTCCCTCTTCCCTTAATCCTGTTCCCTATGATG
 GGCATCGTGGATGCCTCTGAGATCATTAGAGACCATTCCATCCAGTTTCGAGAGCCCAGGGGAATGCC
 AGTCTGTGGGAATGTCAGTGACTGCATCCATAACCTCGGGGGCACCGTGGGAGACTCCAGGGTCTTCCC
 GCCGCTCAGCCATGTCTCCACCTGCCAGGTTGCCGTCGAGTATCTTAAGGACTCCAACCTCCTGTTCTTC
 GGGGGGCTGCTGGTGGCCATCGCGGTGGAACACTGGAACCTGCATAAACGCATCGCCCTCCGTGCTCTCC
 TCATCGTTGGGGTGGCCCTGCCCGCTAATCCTGGGCTTCATGCTGGTACGGCCTTCTGTCCATGTG
 GATCAGCAACACGGCCACCTCAGCCATGATGGTGGCCATCGCACATGCCGTCCTGGACCAGCTGCACAGC
 TCGCAAGCCAGCAGCAAGTTCGAGGAGGGCAGCAACAACCCACCTTCGAGCTCCAGGAACCAAGTCCCC
 AGAAGGAGGTGACCAAGCTTGATAATGGGCAGGCCCTCCCTGTCACGCTCTGCCTCTTCGGAGGGGAGGGC
 ACATCTCAGCCAGAAGCATCTCCACCTCACCCAGTGCATGAGCCTGTGCGTGTGCTACTCCGCCAGCATC
 GGGGGCATCGCCACGCTGACTGGCACCCACCAACCTGGTGTGCAAGGCCAGATCAACTCGCTCTTCC
 CCCAAACGGCAACGTGGTGAATTCGCTCCTGGTTCAGCTTCGCTTCCCCACCATGGTCATCTTGCT
 GCTGCTGGCCTGGTTGTGGTGCAGATCCTCTTCTGGGCTTCAACTCCGGAAGAACTTGGCATTGGG
 GAAAAGATGCAGGAGCAACAGCAGGCAGCCTACTGCGTCATCCAGACCGAGCACAGGCTGCTGGGCCCA
 TGACCTTTGCAGAAAAGGCCATCAGCATCCTATTCGTCATCCTGGTGTGCTCTGGTTACCCGGGAGCC
 GGGCTTTTTTCTGGCTGGGGCAATTTGGCTTTTCCCAATGCCAAGGGGGAGAGCATGGTGTCCGATGGG
 ACAGTGGCCATCTTCATCGGCATAATTATGTTTCATCATACCCTCCAAGTCCCAGGGCTGACCCAGGACC
 CAGAAAACCCAGGGAAGCTGAAGGCCCTCTTGGCCTCCTCGACTGGAAGACGGTGAACCAGAAGATGCC
 GTGGAATATCGTGTATTGCTGGTGGTGGCTATGCCCTGGCCAAGGGCAGTGAAGCATCGGGCCTGTCA
 GAGTGGCTGGGAAACAAGCTGACCCACTGCAGAGTGTGCCAGCTCCAGCCATTGCCATCATCCTCTCCC
 TCCTGGTGGCCACCTTACCAGTGCCTAGCAACGTGGCCACCACTACGATCTTCTGCCATCCTAGC
 CTCATGGCCAGGCCATCTGCCTCCACCCTCTACGTCATGCTCCCTGCACTCTGGCCACCTCCCTG
 GCCTTCATGTTGCTGTGGCCACCCGCCAATGCCATCGTCTTCTTTTCGGGGACCTCAAAGTGTGG
 ATATGGCCCGGGCAGGATTCCTCCTCAACATCATTGGAGTCTGATCATCGCACTGGCCATCAACAGCTG
 GGGCATCCCCCTTTCAGCCTGCACTCTTCCCTCCTGGGCACAGTCCAACACCACAGCCAGTGCCTG
 CCAAGCCTGGCCAACACCACCACCAAGCCCC

ACGCGTACGCGGGCCGCTCGAG – GFP Tag – GTTTAA

Protein Sequence:

>RG228514 representing NM_001145975
 Red=Cloning site Green=Tags(s)

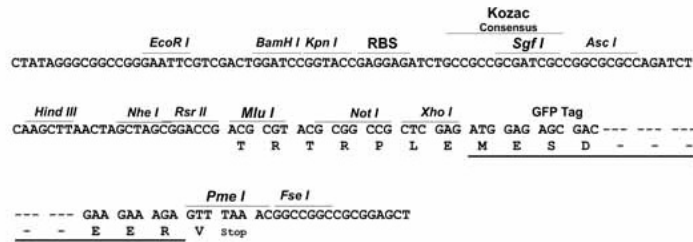
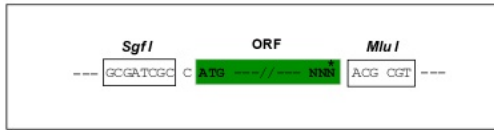
MATCWQALWAYRSYLIVFFVPIILLPLPILVPSKEAYCAYAIILMALFWCTEALPLAVTALFPLILFPM
 GIVDASEIIQRPFSSFESPGECQSVGMSVTASHNLGGTVGDSRVFPPLSHVSTCQVAVEYLKDSNLLFF
 GGLLVAVIAVEHWNLHKRIALRVLLIVGVRPAPLILGFMLVTAFLSMWISNTATSAMMVIHAHVLQDLHS
 SQASSNVEEGSNPTFELQEPSPQKEVTKLDNGQALPVTASSEGRAHLSQKHLHLTQCMSLCVCYSASI
 GGIATLTGTAPNLVLQGGINSLFPQNGNVNFAWFSFAFPTMVIILLLAWLWLQILFLGFNFRKNFGIG
 EKMQEQQQAAYCVIQTEHRLGPMFTAIEKAISILFVILVLLWFTREPFFLGGWNLAFNPAKGESMVSDG
 TVAIFIGIIMFIIIPSKFPLTQDPENPGKLPKAPLGLLDWKTQVQKMPWNIIVLLGGYALAKGSERSGLS
 EWLGNKLTPLQSVPAIAIILSLLVATFTECTSNVATTTIFLPIILASMAQAICLHPLYMLPCTLATSL
 AFMLPVATPPNAIVFSFGDLKVLDMARAGFLNIIIGVLIIALAINSWGIPFLSLHSFPSWAQSNTTAQCL
 PSLANTTTPSP

TRTRPLE – GFP Tag – V

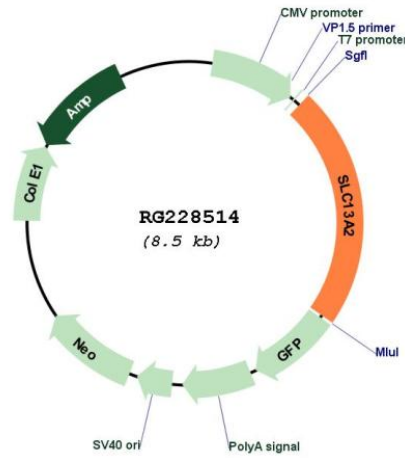
Restriction Sites: SgfI-MluI

Cloning Scheme:

Cloning sites used for ORF Shutting:



Plasmid Map:



ACCN: NM_001145975

ORF Size: 1923 bp

OTI Disclaimer:	The molecular sequence of this clone aligns with the gene accession number as a point of reference only. However, individual transcript sequences of the same gene can differ through naturally occurring variations (e.g. polymorphisms), each with its own valid existence. This clone is substantially in agreement with the reference, but a complete review of all prevailing variants is recommended prior to use. More info
OTI Annotation:	This clone was engineered to express the complete ORF with an expression tag. Expression varies depending on the nature of the gene.
Components:	The ORF clone is ion-exchange column purified and shipped in a 2D barcoded Matrix tube containing 10ug of transfection-ready, dried plasmid DNA (reconstitute with 100 ul of water).
Reconstitution Method:	<ol style="list-style-type: none">1. Centrifuge at 5,000xg for 5min.2. Carefully open the tube and add 100ul of sterile water to dissolve the DNA.3. Close the tube and incubate for 10 minutes at room temperature.4. Briefly vortex the tube and then do a quick spin (less than 5000xg) to concentrate the liquid at the bottom.5. Store the suspended plasmid at -20°C. The DNA is stable for at least one year from date of shipping when stored at -20°C.
RefSeq:	NM_001145975.2
RefSeq Size:	2531 bp
RefSeq ORF:	1926 bp
Locus ID:	9058
UniProt ID:	Q13183
Cytogenetics:	17q11.2
Protein Families:	Transmembrane
Gene Summary:	The protein encoded by this gene is a sodium-coupled citrate transporter that is regulated by the chaperone activity of cyclophilin b. The encoded protein may play a role in the formation of kidney stones. [provided by RefSeq, Oct 2016]