

## Product datasheet for **RG228500**

### ZNF96 (ZSCAN12) (NM\_001163391) Human Tagged ORF Clone

#### Product data:

Product Type:	Expression Plasmids
Product Name:	ZNF96 (ZSCAN12) (NM_001163391) Human Tagged ORF Clone
Tag:	TurboGFP
Symbol:	ZSCAN12
Synonyms:	dj29K1.2; ZFP96; ZNF29K1; ZNF96; ZNF305
Mammalian Cell Selection:	Neomycin
Vector:	pCMV6-AC-GFP (PS100010)
E. coli Selection:	Ampicillin (100 ug/mL)



[View online »](#)

**ORF Nucleotide Sequence:**

>RG228500 ORF sequence, **codon optimized**.  
 Due to the complexity of NM\_001163391, the ORF clone is codon optimized for mammalian Expression.  
 The nucleotide sequence differs from the reference sequence, yet the amino acid sequence remains identical.

Red=Cloning site Blue=ORF Green=Tags(s)

TTTTGTAATACGACTCACTATAGGGCGGCCGGAATTCGTCGACTGGATCCGGTACCGAGGAGATCTGCC  
 GCC**CGGATCGCC**

ATGGCATCCACATGGGCTATCCAAGCGCACATGGACCAGGATGAGCCCCTGGAGGTGAAGATTGAGGAGG  
 AAAAGTATACTACGCGCAGGACTGGGATTTGCGAAAGAACAATACCCATTCACGCGAGGTTTTCCAGGCA  
 ATATTTACAGGCAGTTCTGTTACCAAGAAACCAGCGGCCCGCGGAAGCCCTCAGCCGTTGAGAGAACTC  
 TGCCACCAGTGGCTGCGGCCGAAACGCATACCAAGGAGCAGATCCTTGAACCTCGTTCTGGAGCAAT  
 TCTTGACCATCTGCCTGAAGAGCTGCAGGCATGGGTGCAGGAACAACATCCTGAGAGCGGTGAGGAGGT  
 CGTGACTGTTTTGGAAGATCTTGAACGAGAAGTGGACGAACCTGGAGAACAGGTTAGCGTTCATACTGGT  
 GAGCAGGAAATGTTCTCGAGGAAACCGTTAGGCTCAGAAAAGAGGGAGAACCATCTATGAGTCTGCAGA  
 GCATGAAGGCTCAGCCTAAATATGAAAGTCTGAGCTCGAGTCCCAGCAGGAACAAGTGCTCGATGTTGA  
 GACAGGTAACGAATACGGTAATCTCAAACAAGAGGTTTCAGAGGAGATGGAGCCCCACGGCAAAACGAGT  
 TCCAAATTCGAGAATGATATGAGTAAAAGCGCCGCTGTGGAGAAACACGGGAGCCCGAAGAGATTACCG  
 AAGAGCCATCAGTTGCAGTCGGGAGGACAAGCAGCCAACCTGCGACGAAAATGGAGTGAGCTTGACCGA  
 AAATCCGATCATACTGAACATCAGCGGATTTGTCCCGGGAGGAGAGCTATGGTTGCGCAGACTGTGGG  
 AAGGCTTTCAGTCAGCACAGCCATCTGATCGAGCACAGCGGATCCATACCGGCGACAGACCTTACAAT  
 GTGAAGAGTGTGAAAAGCTTCCGAGGACGCACAGTGCTCATAAGGCACAAGATCATACATACAGGGGA  
 AAAACCTATAAGTGCAACGAATGTGAAAGGCATTTGGGCGCTGGTCAGCTTTGAATCAGCACCAGAGG  
 CTGCACACTGGAGAGAAGCACTACCATTGCAATGACTGTGGCAAAGCTTCTCCCAAAAAGCGGCCTGT  
 TCCACCACATAAAGATCCACACTAGAGATAAACCTATCAATGCACCCAGTGCAACAAGTCTTCTCCCG  
 CCGCAGCATTCTGACCCAGCATCAGGGCGTTCACACCGGTGCCAAGCCCTACGAATGCAATGAGTGCGGC  
 AAGGCTTTGTGTATAATAGCTCTCTGGTGTCTCATCAAGAGATTCACCATAAGGAGAAAATGCTACCAGT  
 GCAAGGAGTGCAGCAAGTCTTTCAGTCAGTCCGGCCTGATACAACACCAGAGGATCCACACCGGAGAGAA  
 ACCCTATAAATGTGACGCTGTGAGAAGGCATTATCCAGAGGACTTCTCTCACCGAACACCAGAGGATC  
 CATACCGGTGAGAGGCCCTACAAGTGCATAAATGCGGAAAAGCGTTTACTCAGAGGAGCGTCTTGACTG  
 AACACCAGCGAATTCACACAGGGGAGAGGCCTTACAAATGCGATGAGTGTGAAAATGCCTTTTCGCGGAAT  
 CACCTCACTCATCCAACATCAGCGGATACATACAGGGGAAAAACCTTATCAATGCGATGAATGTGGTAAG  
 GCATTTTCGGCAGCGCAGCGACCTGAGCAAGCACCAGAGGATCCACAACCGACGCGGAACCTTACGTCTGTA  
 AGGAGTGCGGAAAGTCAATTCGGCAGAATAGTGCTCTGACCCAGCACAAACTATCCATAAAGGAGAGAA  
 GACGCTCAGCGTG

**ACGCGT**ACGCGGCCGCTCGAG – GFP Tag – GTTTAA

Protein Sequence: >RG228500 representing NM\_001163391  
 Red=Cloning site Green=Tags(s)

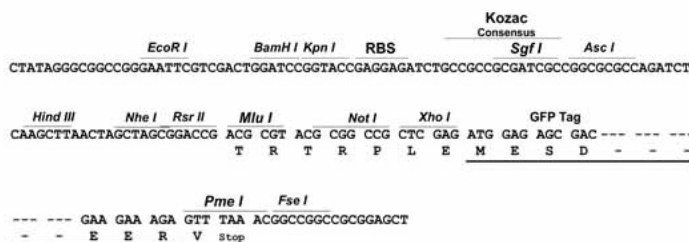
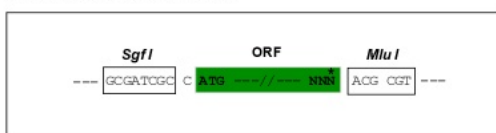
MASTWAIQAHMDQDEPLEVKIEEEKYTTTRQDWDLRKNNTHSREVFQRQYFRQFCYQETSGPREALSRLREL  
 CHQWLRPETHTKEQILELLVLEQFLTILPEELQAWVQEQHPESGEEVTVLEDLERELDEPGEQVSVHTG  
 EQEMFLQETVRLRKEGEPMSLSQSMKAQPKYESPELESQQEQVLDVETGNEYGNLKQEVSEEMEPHGKTS  
 SKFENDMSKSARCGETREPEEITEEPSACSREDKQPTCDENGVSLTENS DHTEHQRICPGEESYGCDDCG  
 KAFSQHSHLIEHQRIHTGDRPYKCEECKGAFGRGRTVLIRHKIIHTGEKPYKCNECKGAFGRWSALNQHQ  
 LHTGEKHYHCNDCGKAFSQKAGLFHHIKIHTRDKPYQCTQCNCFSRRSILTQHGVHTGAKPYECNECG  
 KAFVYNSLSVSHQEIHHEKCYCKECKGKFSQSGLIQHQRIHTGEKPYKCDVCEKAFIQRSLTEHQRI  
 HTGERPYKCDKCGKAFTRSVL TEHQRIHTGERPYKCDCEGNAFRGITSLIHQHQRIHTGEKPYQCDCEGK  
 AFRQRSDL SKHQRIHNRRTYVCKECKGKSFQNSALTQHQTIIHKGEKSVSV

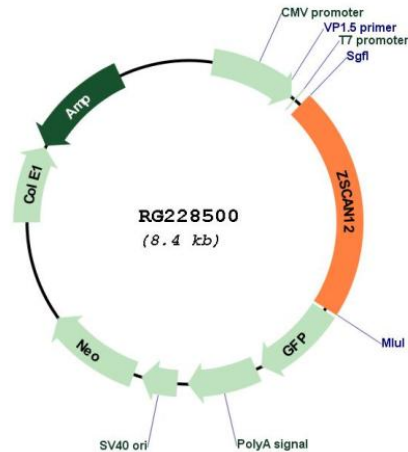
TRTRPLE - GFP Tag - V

Restriction Sites: SgfI-MluI

Cloning Scheme:

Cloning sites used for ORF Shutting:



**Plasmid Map:**


**ACCN:** NM\_001163391

**ORF Size:** 1833 bp

**OTI Disclaimer:** The molecular sequence of this clone aligns with the gene accession number as a point of reference only. However, individual transcript sequences of the same gene can differ through naturally occurring variations (e.g. polymorphisms), each with its own valid existence. This clone is substantially in agreement with the reference, but a complete review of all prevailing variants is recommended prior to use. [More info](#)

**OTI Annotation:** This clone was engineered to express the complete ORF with an expression tag. Expression varies depending on the nature of the gene.

**Components:** The ORF clone is ion-exchange column purified and shipped in a 2D barcoded Matrix tube containing 10ug of transfection-ready, dried plasmid DNA (reconstitute with 100 ul of water).

**Reconstitution Method:**

1. Centrifuge at 5,000xg for 5min.
2. Carefully open the tube and add 100ul of sterile water to dissolve the DNA.
3. Close the tube and incubate for 10 minutes at room temperature.
4. Briefly vortex the tube and then do a quick spin (less than 5000xg) to concentrate the liquid at the bottom.
5. Store the suspended plasmid at -20°C. The DNA is stable for at least one year from date of shipping when stored at -20°C.

**RefSeq:** [NM\\_001163391.1](#), [NP\\_001156863.1](#)

**RefSeq Size:** 7711 bp

**RefSeq ORF:** 1836 bp

Locus ID: 9753  
Cytogenetics: 6p22.1  
Protein Families: Transcription Factors