

Product datasheet for **RG228499**

TACC1 (NM_001146216) Human Tagged ORF Clone

Product data:

Product Type:	Expression Plasmids
Product Name:	TACC1 (NM_001146216) Human Tagged ORF Clone
Tag:	TurboGFP
Symbol:	TACC1
Synonyms:	Ga55
Mammalian Cell Selection:	Neomycin
Vector:	pCMV6-AC-GFP (PS100010)
E. coli Selection:	Ampicillin (100 ug/mL)



[View online »](#)

ORF Nucleotide Sequence:

>RG228499 representing NM_001146216
 Red=Cloning site Blue=ORF Green=Tags(s)

TTTTGTAATACGACTCACTATAGGGCGGCCGGAATTCGTCGACTGGATCCGGTACCGAGGAGATCTGCC
 GCC**CGGATCGCC**

ATGACAGAAGGCAGCATGGGGTACCCTCGAGGCTCCGCAGAAGCTGATCTAAAAGCTGGCAACTCCT
 GTCAGAGCTTGTGCCAGCAGAAGAAGCAAGCTGAGAAAAGCCAAAGCCTGTCCCCTGAGGAAGAAAGC
 AATTGGAGGAGAGTTCTCAGACACCAACGCTGCTGTGGAGGGCACACCTCTCCCCAAGGCATCCTATCAC
 TTCAGTCTGAAGAGTTGGATGAGAACAAGTCTTTGCTAGGAGATGCCAGGTTCCAGAAGTCTCCCC
 CTGACCTTAAAGAACTCCCGGCACTCTCAGTAGTGACACCAACGACTCAGGGGTTGAGCTGGGGGAGGA
 GTCGAGGAGCTCACCTCTCAAGCTTGAGTTGATTTACAGAAGATACAGGAAACATAGAGGCCAGGAAA
 GCCCTTCAAGGAAGCTTGGCAGGAACTGGGTAGCACACTGACTCCCAAGATACAAAAGATGGCATCA
 GTAAGTCAGCAGGTTTAGAACAGCCTACAGACCCAGTGGCAGGAGACGGGCTCTCTCCCAACATCTTC
 CAAGCCAGATCCTAGTCAGTGGGAAAGCCAGCTTCAACCCCTTTGGGAGCCACTCTGTCTGCAGAAC
 TCCCCACCCTCTCTTCTGAGGGCTCTACCACCTTGACCAGATAACTTTGACGAATCCATGGATCCCT
 TTAACCAACTACGACCTTAACAAGCAGTGACTTTTGTCTCCCACTGGTAAATACGTTAATGAAATCTT
 AGAATCACCCAAGAAGGCAAAGTCGCGTTAATAACGAGTGGCTGTAAGGTGAAGAAGCATGAAACTCAG
 TCTCTCGCCCTGGATGCATGTTCTCGGGATGAAGGGCAGTGATCTCCAGATTTTCAGACATTTCTAATA
 GGGATGGCCATGCTACTGATGAGGAGAACTGGCATCCACGTATGTGGTCAGAAATCAGCTGGTGCCGA
 GGTGAAAGGTGAGCCAGAGGAAGACCTGGAGTACTTTGAATGTTCCAATGTTCTGTGTCTACCAATAAT
 CATGCGTTTTATCCTCAGAAGCAGGCATAGAGAAGGAGACGTGCCAGAAGATGGAAGAAGACGGGTCCA
 CTGTGCTTGGGCTGCTGGAGTCTCTGCAGAGAAGGCCCTGTGTGCGGTCTCTGTGGAGGTGAGAGCCC
 CCTGGATGGGATCTGCCTCAGCGAATCAGACAAGACAGCCGTGCTCACCTTAATAAGAGAAGAGATAATT
 ACTAAAGAGATTGAAGCAAATGAATGGAAGAAGAAATACGAAGAGACCCGCAAGAAGTTTTGGAGATGA
 GGAAAATTGTAGCTGAATATGAAAAGACTATTGCTCAAATGATTGAAGATGAACAAAGGACAAGTATGAC
 CTCTCAGAAGAGCTTCCAGCAACTGACCATGGAGAAGGAACAGGCCCTGGCTGACCTTAACCTGTGGAA
 AGGTCCCTTTCTGATCTCTTTCAGGAGATATGAGAACCTGAAAGGTGTTCTGGAAGGTTCAAGAAGATG
 AAGAAGCCTTGAAGAAATGTGCTCAGGATTACTTAGCCAGAGTTAAACAAGAGGAGCAGCGATACCAGGC
 CCTGAAAATCCACGCAGAAGAGAACTGGACAAAGCCAATGAAGAGATTGCTCAGGTTTCAACAAAAGCA
 AAGGCTGAGAGTGCAGCTCTCCATGCTGGACTCCGCAAAGAGCAGATGAAGGTGGAGTCCCTGGAAGGG
 CCCTGCAGCAGAAGAACCAAGAAATTGAAGAACTGACAAAATCTGTGATGAGCTGATTGCAAGCTGGG
 AAAGACTGAC

ACGCGTACGCGGCCGCTCGAG – GFP Tag – GTTTAA

Protein Sequence:

>RG228499 representing NM_001146216
 Red=Cloning site Green=Tags(s)

MTEGSMGVLEASAEADLKAGNSPELVPSRRSKLRKPKVPLRKAIGGEFSDTNAAVEGTPLPKASYH
 FSPEELDENTSPLLGDARFQKSPDLKETPGTSSDTNDSGVELGEESSRSPKLEFDFTEDTGNIEARK
 ALPRKLGRKLGSTLTPKIQKDGISKSAGLEQPTDPVARDGPLSQTSSKPDPSQWESPSFNPFGSHSVLQN
 SPPLSSEGSYHFDPNFDESMDPFKPTTTLTSSDFCSPTGNHVNEILESPPKAKSRLITSGCKVKKHETQ
 SLALDACSRDEGAVISQISDISNRDGHATDEEKLASTSCGQKSAGAEVKGEPEEDLEYFECSNVPVSTIN
 HAFSSSEAGIEKETCQKMEEDGSTVLGLLESSAEKAPVSVSCGGESPLDGIKLSKSDKTAVLTIREEII
 TKEIEANEWKKKYEETRQEVLEMRKIVAEYEKIAQMIEDEQRTSMTSQKSFQQLTMEKEQALADLNSVE
 RSLSDLFRRYENLKGVLGFKKNEEALKKCAQDYLRVQEEQRYQALKIHAEEKLDKANEIEAQVRTKA
 KAESAALHAGLRKEQMKVESLERALQKNQIEELTKICDELIAKLGKTD

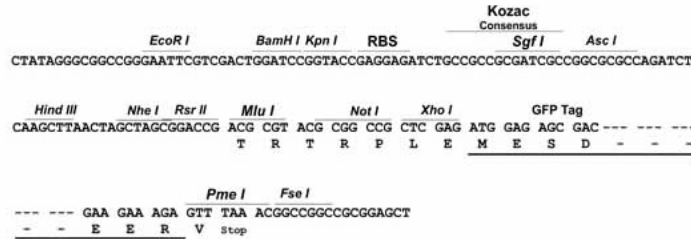
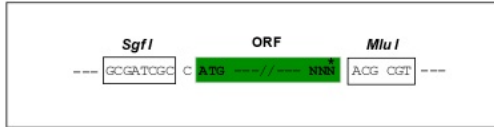
TRTRPLE – GFP Tag – V

Restriction Sites:

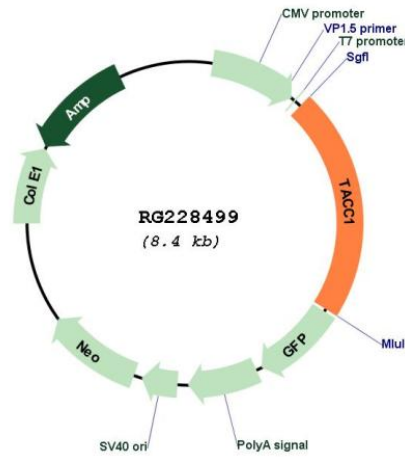
Sgfl-MluI

Cloning Scheme:

Cloning sites used for ORF Shutting:



Plasmid Map:



ACCN: NM_001146216
 ORF Size: 1830 bp

OTI Disclaimer:	The molecular sequence of this clone aligns with the gene accession number as a point of reference only. However, individual transcript sequences of the same gene can differ through naturally occurring variations (e.g. polymorphisms), each with its own valid existence. This clone is substantially in agreement with the reference, but a complete review of all prevailing variants is recommended prior to use. More info
OTI Annotation:	This clone was engineered to express the complete ORF with an expression tag. Expression varies depending on the nature of the gene.
Components:	The ORF clone is ion-exchange column purified and shipped in a 2D barcoded Matrix tube containing 10ug of transfection-ready, dried plasmid DNA (reconstitute with 100 ul of water).
Reconstitution Method:	<ol style="list-style-type: none">1. Centrifuge at 5,000xg for 5min.2. Carefully open the tube and add 100ul of sterile water to dissolve the DNA.3. Close the tube and incubate for 10 minutes at room temperature.4. Briefly vortex the tube and then do a quick spin (less than 5000xg) to concentrate the liquid at the bottom.5. Store the suspended plasmid at -20°C. The DNA is stable for at least one year from date of shipping when stored at -20°C.
RefSeq:	NM_001146216.3
RefSeq Size:	7748 bp
RefSeq ORF:	1833 bp
Locus ID:	6867
UniProt ID:	O75410
Cytogenetics:	8p11.22
Gene Summary:	This locus may represent a breast cancer candidate gene. It is located close to FGFR1 on a region of chromosome 8 that is amplified in some breast cancers. Several transcript variants encoding different isoforms have been found for this gene. [provided by RefSeq, Jun 2017]