

Product datasheet for **RG228485**

KIRREL 3 (KIRREL3) (NM_001161707) Human Tagged ORF Clone

Product data:

Product Type:	Expression Plasmids
Product Name:	KIRREL 3 (KIRREL3) (NM_001161707) Human Tagged ORF Clone
Tag:	TurboGFP
Symbol:	KIRREL 3
Synonyms:	KIRRE; MRD4; NEPH2; PRO4502
Mammalian Cell Selection:	Neomycin
Vector:	pCMV6-AC-GFP (PS100010)
E. coli Selection:	Ampicillin (100 ug/mL)



[View online »](#)

ORF Nucleotide Sequence:

>RG228485 representing NM_001161707
 Red=Cloning site Blue=ORF Green=Tags(s)

TTTTGTAATACGACTCACTATAGGGCGGCCGGAATTCGTCGACTGGATCCGGTACCGAGGAGATCTGCC
 GCC**CGGATCGCC**

ATGAAACCCTTCAGCTCGATCTGCTCTTCGTCGCTTCTCCTTTCAGTCAAGAGCTGGGCCCTCCAGA
 AGAGAGGATGCTGTCTGGTGTGGGCTACATGGCCAAGGACAAGTTTCGGAGAATGAATGAAGGCCAAGT
 CTATTCCTTCAGCCAGCAGCCCCAGGACCAGGTGGTGGTGTCTGGGACAGCCAGTACGCTACTTTGCGCC
 ATCCCCGAATACGATGGCTTCGTTCTGTGGATCAAGGACGGCTTGGCTCTGGGTGTGGGACGGGACCTCT
 CAAGTTACCCACAGTACCTGGTGGTAGGAACACCTGTCAGGGGAGCACCACCTGAAGATCCTGAGGGC
 AGAGCTGCAAGACGATGCGGTGTACGAGTGCCAGGCCATCCAGGCCGCATCCGCTCCCGCCCCGCACGC
 CTCACAGTCTGGTGCCGCTGATGACCCCGTCATCCTGGGGGGCCCTGTGATCAGCCTGCGTGCAGGGG
 ACCCTCTCAACCTCACCTGCCACGCAGACAATGCCAAGCCTGCAGCCTCCATCATCTGGTTGCGAAAGGG
 AGAGGTCAATGAGGGCCACTACTCCAAGACCTGCTTCGGGACGGCAAGCGGAGAGCATCGTCAGC
 ACCCTCTTCATCTCCCTGGTGGTGGAGAATGGCCAGAGCATCGTGTGTCTGTCGCCACCAACAAAGCCA
 TCCCCGGAGGAAAGGAGACGTCGGTCCACATTGACATCCAGCACCTCCACTGGTCAACCTCTCGGTGGA
 GCCACAGCCAGTCTGGAGGACAACGTCGTCACCTTCCACTGCTCTGCAAAGGCCAACCCAGCTGTCAAC
 CAGTACAGGTGGGCCAAGCGGGCCAGATCATCAAGGAGGCATCTGGAGAGGTGTACAGGACCACAGTGG
 ACTACAGTACTTCTCAGAGCCCGTCTCCTGTGAGGTGACCAACGCCCTGGGACAGCAACCTCAGCCG
 CACGGTTGACGTACTTTGGGCCCCGGATGACCACAGAACCCCAATCCTTGCTCGTGGATCTGGGCTCT
 GATGCCATCTCAGCTGCGCTGGACCGCAACCCATCCCTGACCATCGTCTGGATGAAGCGGGGCTCCG
 GAGTGGTCTGAGCAATGAGAAGACCCTGACCCCAAATCCGTCGCCAGGAGGACGCGGCAAGTACGT
 GTGCCGGGCTGTGGTGCCTGTGGGAGCCGGGAGAGAGAGAGTACCCTGACCGTCAATGGACCCCCC
 ATCATCTCCAGCACCCAGACCCAGCAGCCCTCCACGGCAGAAAGGGCCAGATCAAGTGCTTCATCCGGA
 GCACGCCGCCCGGACCGCATCGCTGGTCTGGAAGGAGAACGTTCTGGAGTCGGGCACATCGGGGCG
 CTATACGGTGGAGACCATCAGCACCGAGGAGGGCGTCACTCCACCCTGACCATCAGCAACATCGTGCAG
 GCCGACTCCAGACCATCTACAACGACGGCCTGGAACAGCTTCGGCTCCGACACTGAGATCATCCGGC
 TCAAGGAGCAAGGTTTCGAAATGAAGTCGGGAGCCGGGCTGGAAGCAGAGTCTGTCCGATGGCCGTCAT
 CATTGGGGTGGCCGTAGGAGCTGGTGTGCCTTCTCTGCTTATGGCAACCATCGTGGCGTTCTGCTGT
 GCCGTTCCAGAGAAGTACGGGAGGAGATCCGGGATCTCAGGGAGGGGACAGAGAAAAGGCCAGGC
 TTAGGCTGCCCGGAGAGCAAGTAAGCAGGAGTGAATGAACAGGGGTCC

ACGCGTACGCGGCCGCTCGAG – GFP Tag – GTTTAA

Protein Sequence:

>RG228485 representing NM_001161707
 Red=Cloning site Green=Tags(s)

MKPFQLDLLFVCFLLFSQELGLQKRGCCCLVLGYMAKDKFRMNQGVYVFSQQPQDQVVVSGQPVTLLCA
 IPEYDGFVLWIKDGLALGVGRDLSSYPQYL VVGNHLSGEHHLKILRAELQDDAVYECQAIQAAIRSRPAR
 LTVLVPPDDPVILGPPVISLRAGDPLNL TCHADNAKPAASIIWLRKGEVINGATYSKTLRLDGKRESIVS
 TLFISPGDVENGQSI VCRATNKAIPGGKETSVTIDIQHPPLVNL SVEPQPVL EDNVVTFHCSAKANPAVT
 QYRWAKRGQIIKEASGEVYRTTVDYTYFSEPVSCVETNAL GSTNL SRTVDVYFGPRMTTEPQSLLVDLGS
 DAIFSCAWTGNPSLTI VWMKRGSGVVL SNEKTL TLKSVRQEDAGKYVCRAVVPVGVGAGEREVTLVNGPP
 IISSTQTQHALHGEKGQIKCFIRSTPPPDRIAWSKENVLES GTSGRYTVETISTEEGVISTLTISNIVR
 ADFQTIYNCTAWNSFGSDTEIIRLKEQGSEMKSAGLEAESVPMAVIIGVAVGAGVAFVL MATIVAFCC
 ARSQRSTGGRSGISGRGTEKKARLRLPRRASKQECNEQGS

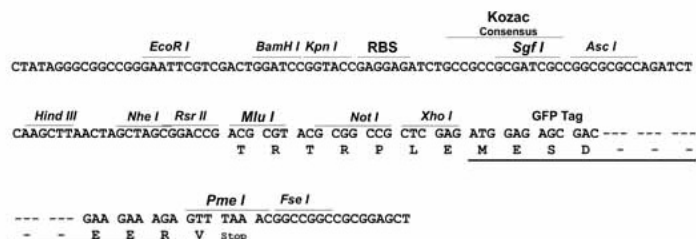
TRTRPLE – GFP Tag – V

Restriction Sites:

Sgfl-MluI

Cloning Scheme:

Cloning sites used for ORF Shutting:



ACCN: NM_001161707

ORF Size: 1800 bp

OTI Disclaimer: The molecular sequence of this clone aligns with the gene accession number as a point of reference only. However, individual transcript sequences of the same gene can differ through naturally occurring variations (e.g. polymorphisms), each with its own valid existence. This clone is substantially in agreement with the reference, but a complete review of all prevailing variants is recommended prior to use. [More info](#)

OTI Annotation: This clone was engineered to express the complete ORF with an expression tag. Expression varies depending on the nature of the gene.

Components: The ORF clone is ion-exchange column purified and shipped in a 2D barcoded Matrix tube containing 10ug of transfection-ready, dried plasmid DNA (reconstitute with 100 ul of water).

Reconstitution Method:

1. Centrifuge at 5,000xg for 5min.
2. Carefully open the tube and add 100ul of sterile water to dissolve the DNA.
3. Close the tube and incubate for 10 minutes at room temperature.
4. Briefly vortex the tube and then do a quick spin (less than 5000xg) to concentrate the liquid at the bottom.
5. Store the suspended plasmid at -20°C. The DNA is stable for at least one year from date of shipping when stored at -20°C.

RefSeq: [NM_001161707.1](#), [NP_001155179.1](#)

RefSeq Size: 2536 bp

RefSeq ORF: 1803 bp

Locus ID: 84623

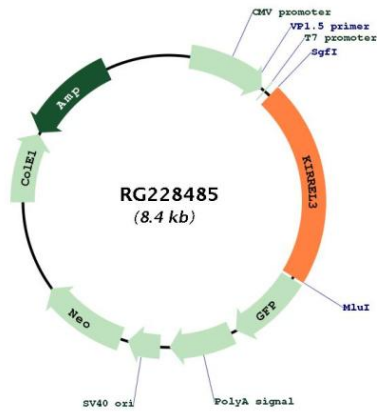
UniProt ID: [Q8IZU9](#)

Cytogenetics: 11q24.2

Protein Families: Transmembrane

Gene Summary: The protein encoded by this gene is a member of the nephrin-like protein family. These proteins are expressed in fetal and adult brain, and also in podocytes of kidney glomeruli. The cytoplasmic domains of these proteins interact with the C-terminus of podocin, also expressed in the podocytes, cells involved in ensuring size- and charge-selective ultrafiltration. The protein encoded by this gene is a synaptic cell adhesion molecule with multiple extracellular immunoglobulin-like domains and a cytoplasmic PDZ domain-binding motif. Mutations in this gene are associated with several neurological and cognitive disorders. Alternatively spliced transcript variants encoding different isoforms have been found for this gene. [provided by RefSeq, Jul 2017]

Product images:



Circular map for RG228485