

Product datasheet for **RG228479**

NRG1 (NM_001160001) Human Tagged ORF Clone

Product data:

Product Type:	Expression Plasmids
Product Name:	NRG1 (NM_001160001) Human Tagged ORF Clone
Tag:	TurboGFP
Symbol:	NRG1
Synonyms:	ARIA; GGF; GGF2; HGL; HRG; HRG1; HRGA; MST131; MSTP131; NDF; NRG1-IT2; SMDF
Mammalian Cell Selection:	Neomycin
Vector:	pCMV6-AC-GFP (PS100010)
E. coli Selection:	Ampicillin (100 ug/mL)



[View online »](#)

ORF Nucleotide Sequence:

>RG228479 representing NM_001160001
 Red=Cloning site Blue=ORF Green=Tags(s)

TTTTGTAATACGACTCACTATAGGGCGGCCGGGAATTCGTCGACTGGATCCGGTACCGAGGAGATCTGCC
 GCC**CGCATCGCC**

ATGGGAAAGGACGCGCGGGCCGAGTTGGCACCACAGCCTTGCCCTCCCCGATTGAAAGAGATGAAAAGCC
 AGGAATCGGCTGCAGGTTCCAACTAGTCTTCGGTGTGAAACCAGTTCTGAATACTCCTCTCAGATT
 CAAGTGGTTCAAGAATGGGAATGAATTGAATCGAAAAACAAACCACAAAATATCAAGATACAAAAAAG
 CCAGGGAAGTCAGAACTTCGCATTAACAAAGCATCACTGGCTGATTCTGGAGAGTATATGTGCAAAGTGA
 TCAGCAAATTAGGAAATGACAGTGCCTCTGCCAATACCCATCGTGAATCAAACGCTACATCTACATC
 CACCACTGGGACAAGCCATCTTGTAAAAATGTGCGGAGAAGGAGAAAACTTCTGTGTGAATGGAGGGGAG
 TGCTTCATGGTGAAGACCTTTCAAACCCCTCGAGATACTTGTCAAGTGCCCAATGAGTTTACTGGT
 ATCGCTGCCAAAACACGTAATGGCCAGCTTCTACAAGCATCTTGGGATTGAATTTATGGAGGCGGAGGA
 GCTGTACCAGAAGAGAGTGTGACCATAACCGGCATCTGCATCGCCCTCCTTGTGGTCCGCATCATGTGT
 GTGGTGGCCTACTGCAAAACCAAGAAACAGCGGAAAAAGCTGCATGACCGTCTTCGGCAGAGCCTTCGGT
 CTGAACGAAACAATATGATGAACATTGCCAATGGGCCTCACCATCCTAACCCACCCCCGAGAATGTCCA
 GCTGGTGAATCAATACGTATCTAAAAACGTCATCTCCAGTGAGCATATTGTTGAGAGAGAAGCAGAGACA
 TCCTTTTCCACCACTCACTATACTTCCACAGCCCATCACTCCACTACTGTACCCAGACTCCTAGCCACA
 GCTGGAGCAACGGACACACTGAAAGCATCTTTCCGAAAGCCACTCTGTAATCGTGATGCATCCGTAGA
 AAACAGTAGGCACAGCAGCCAACTGGGGGCCAAGAGGACGCTTAAATGGCACAGGAGGCCCTCGTGAA
 TGTAACAGCTTCTCAGGCATGCCAGAGAAACCCCTGATTCTACCGAGACTCTCCTCATAGTAAAAGGT
 ATGTGTACGCCATGACCACCCCGCTCGTATGTACCTGTAGATTTCCACACGCCAAGCTCCCCAAATC
 GCCCCTTCGGAATGTCTCCACCCGTGTCAGCATGACGGTGTCCATGCCTTCCATGGCGGTGAGCCCC
 TTCATGGAAGAAGAGAGACCTCTACTTCTCGTGACACCACCAAGGCTGCGGGAGAAGAAGTTTGACCATC
 ACCCTCAGCAGTTCAGCTCCTTCCACCACAACCCCGCGCATGACAGTAACAGCCTCCCTGCTAGCCCTT
 GAGGATAGTGGAGGATGAGGAGTATGAAACGACCCAAGAGTACGAGCCAGCCCAAGGCCTGTTAAGAAA
 CTCGCCAATAGCCGGCGGGCCAAAAGAACCAAGCCCAATGGCCACATTGCTAACAGATTGGAAGTGGACA
 GCAACACAAGCTCCAGAGCAGTAACTCAGAGAGTGAACAGAAGATGAAAGAGTAGGTGAAGATACGCC
 TTTCTGGGCATACAGAACCCCTGGCAGCCAGTCTTGAGGCAACACCTGCCTTCCGCTGGCTGACAGC
 AGGACTAACCCAGCAGGCCGCTTCTCGACACAGGAAGAAATCCAGGCCAGGCTGTCTAGTGAATTGCTA
 ACCAAGACCCATTGCTGTA

ACGCGTACGCGGCCGCTCGAG - GFP Tag - GTTTAA

Protein Sequence:

>RG228479 representing NM_001160001
 Red=Cloning site Green=Tags(s)

MGKGRAGRVGTTALPPRLKEMKSQESAAGSKLVLRCEETSSEYSSLRFKWFKNGNELNRKNKPNQNIKIQKK
 PGKSELRINKASLADSGEYMCKVISKLGNDASANITIVESNATSTSTTGTSHLVKCAEKEKTFVNGGE
 CFMVKDLNPSRYLCKCPNEFTGDRQNYVMASFYKHLGIEFMEAEELYQKRVLTITGICIAALLVVGIMC
 VVAYCKTKKQRKLDHRLRQSLRSENNMMNIANGPHHPNPPENVQLVNQYVSKNVISSEHIVEREAET
 SFSTSHYTSTAHHSTTVTQTPSHSWSNGHTESILSESHSVIVMSSVENSRRHSSPTGGPRGRNGTGGPRE
 CNSFLRHARETPDSYRDSPHSERVVSAMTTPARMSPVDFHTPSSPKSPPSEMSPVSSMTVSMPSMAVSP
 FMEEERPLLLVTPPRLREKKFDHHPQQFSSFHHPAHDSNSLPASPLRIVEDEEYETTQYEPAQEPVKK
 LANSRRAKRTKPNGHIANRLEVDSENTSSQSSNSESETEDERVGEDTPFLGIQNPLAASLEATPAFRLADS
 RTNPAGRFSTQEEIQARLSSVIANQDPIAV

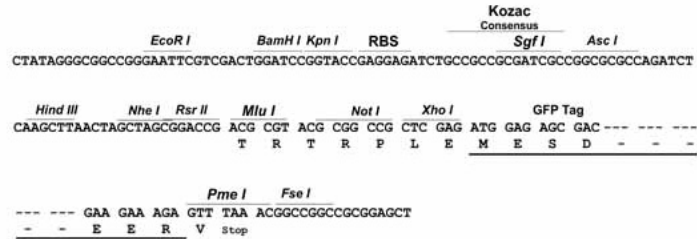
TRTRPLE - GFP Tag - V

Restriction Sites:

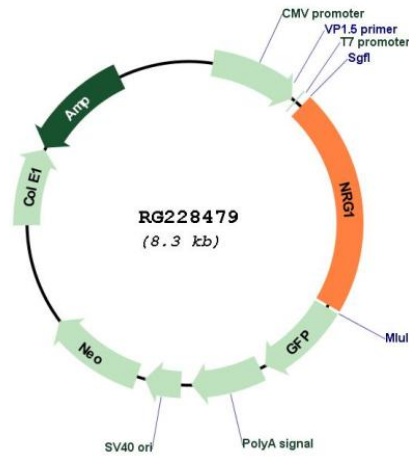
Sgfl-MluI

Cloning Scheme:

Cloning sites used for ORF Shutting:



Plasmid Map:



ACCN: NM_001160001
 ORF Size: 1770 bp

OTI Disclaimer:	The molecular sequence of this clone aligns with the gene accession number as a point of reference only. However, individual transcript sequences of the same gene can differ through naturally occurring variations (e.g. polymorphisms), each with its own valid existence. This clone is substantially in agreement with the reference, but a complete review of all prevailing variants is recommended prior to use. More info
OTI Annotation:	This clone was engineered to express the complete ORF with an expression tag. Expression varies depending on the nature of the gene.
Components:	The ORF clone is ion-exchange column purified and shipped in a 2D barcoded Matrix tube containing 10ug of transfection-ready, dried plasmid DNA (reconstitute with 100 ul of water).
Reconstitution Method:	<ol style="list-style-type: none">1. Centrifuge at 5,000xg for 5min.2. Carefully open the tube and add 100ul of sterile water to dissolve the DNA.3. Close the tube and incubate for 10 minutes at room temperature.4. Briefly vortex the tube and then do a quick spin (less than 5000xg) to concentrate the liquid at the bottom.5. Store the suspended plasmid at -20°C. The DNA is stable for at least one year from date of shipping when stored at -20°C.
RefSeq:	NM_001160001.3
RefSeq Size:	2502 bp
RefSeq ORF:	1773 bp
Locus ID:	3084
UniProt ID:	Q02297
Cytogenetics:	8p12
Protein Families:	Druggable Genome, Secreted Protein, Transcription Factors, Transmembrane
Protein Pathways:	ErbB signaling pathway
Gene Summary:	The protein encoded by this gene is a membrane glycoprotein that mediates cell-cell signaling and plays a critical role in the growth and development of multiple organ systems. An extraordinary variety of different isoforms are produced from this gene through alternative promoter usage and splicing. These isoforms are expressed in a tissue-specific manner and differ significantly in their structure, and are classified as types I, II, III, IV, V and VI. Dysregulation of this gene has been linked to diseases such as cancer, schizophrenia, and bipolar disorder (BPD). [provided by RefSeq, Apr 2016]