

Product datasheet for **RG228464**

TOX3 (NM_001146188) Human Tagged ORF Clone

Product data:

Product Type:	Expression Plasmids
Product Name:	TOX3 (NM_001146188) Human Tagged ORF Clone
Tag:	TurboGFP
Symbol:	TOX3
Synonyms:	CAGF9; TNRC9
Mammalian Cell Selection:	Neomycin
Vector:	pCMV6-AC-GFP (PS100010)
E. coli Selection:	Ampicillin (100 ug/mL)



[View online »](#)

ORF Nucleotide Sequence:

>RG228464 representing NM_001146188
 Red=Cloning site Blue=ORF Green=Tags(s)

TTTTGTAATACGACTCACTATAGGGCGGCCGGAATTCGTCGACTGGATCCGGTACCGAGGAGATCTGCC
 GCC**GCGATCGCC**

ATGAAGTGCCAACCTCGCTCGGGAGCCAGGCGCATTGAGGAGAGACTTCATTACCTGATAACTACCTATC
 TGAATTTGGAAATAATAAATACTATATGAATATGGCTGAGGCGAACAATGCGTTCTTCGCTGCCAGTGA
 GACATTCACACACCAAGCCTTGGGAGCAGGAATTCGAAATTCACCAATCACGCTCCTCCAGAGTCA
 GACCTGCCCTAGGCATGCCGGATGACTGCTACCCTTCAAGCCCTCAGCGATCCATTGCCTTCCAGG
 GAAGTGAATTCACACCCAGTTTCCCCCTCAAAGCCTGGACCTCCCTTCCATTACAATCTCAAGAAATCT
 CGTGGAACAAGATGGCGTGCTTCATAGCAGTGGTTCATATGGATCAGAGCCACACACAAGTGTCCAG
 TACCGGCAGGATCCCTCCCTGATCATGCGGTCCATCGTCCACATGACCGATGCTGCGCGTTCTGGGGTCA
 TGCCCTCTGCCAGCTCACCACCATCAACCAGTCTCAGCTCAGCGCCAGTTGGGGTTGAATTTGGGAGG
 TGCCAGTATGCCCTCACACATCTCCTTCACTCCAGCAAGCAAATCAGCCACTCCCTCCCCTCCAGCTCC
 ATCAATGAAGAGGATGCTGATGAAGCCAACAGAGCCATTGGAGAGAAAAGAGCTGCTCCAGACTCTGGCA
 AGAAGCCCAAGACTCAAAGAAAAAGAAAAAGAAAGATCCAATGAGCCACAGAAGCCAGTGTCCAGCATA
 TGCCCTGTTTTTCAGAGACACACAGGCTGCAATTAAGGTCAAACCCCAATGCAACCTTTGGAGAGGTC
 TCAAAAATGTAGCATCTATGTGGGACAGCCTTGGAGAAGAACAAGAGCAGGTATATAAAGGAAAAACAG
 AAGCTGCCAAAAAAGAATACCTGAAGGCCCTGGCGGCATACAGGGCCAGCCTCGTTTCTAAGGCTGCTGC
 TGAGTCAGCAGAAGCCAGACCATCCGTCTGTTGAGCAGACCTGGCGTGCACCAATCTAACATCCTCT
 CTCCTTCAACTCCACTGTCTCAACATGGAACAGTGTGAGTCACTCCCATGAACCAGATTGTCCAGTCC
 TCCCTAGGTCAATCGCTCCCAACCCCTTAACCATGAGACTCCCATGAACCAGATTGTCCAGTCCAGTCC
 CATTGCGCAACATGCCCTCGAACATTGGGGCTCCACTGATAAGCTCCATGGGAACGACCATGGTTGGC
 TCAGCACCTCCACCAAGTGAATCCTCGGTGCAAACCCAGCAGCATCAGATGCAATTGCAGCAGCAGC
 AGCAGCAGCAACAACAGATGCAACAGATGCAGCAGCAGCACTCCAGCAGCACCAAATGCATCAGCA
 AATCCAGCAGCAGATGCAGCAGCAGATTTCCAGCACCACATGCAGCAGCACCTGCAGCAGCAGCAGCAG
 CATCTCCAGCAGCAAATTAATCAACAGCAGCTGCAGCAGCAGCTGCAGCAGCGCCTCCAGCTGCAGCAGC
 TGCAACACATGCAGCACCAGTCTCAGCCTTCTCCTCGGCAGCACTCCCTGTGCGCTCTCAGATAACATC
 CCCCATCCCTGCCATCGGGAGCCCCAGCCAGCCTCTCAGCAGCACCAGTCGAAATACAGTCTCAGACA
 CAGACTCAAGTATTATCGCAGGTCAGTATTTTC

ACGCGTACGCGGCCGCTCGAG - GFP Tag - GTTTAA

Protein Sequence:

>RG228464 representing NM_001146188
 Red=Cloning site Green=Tags(s)

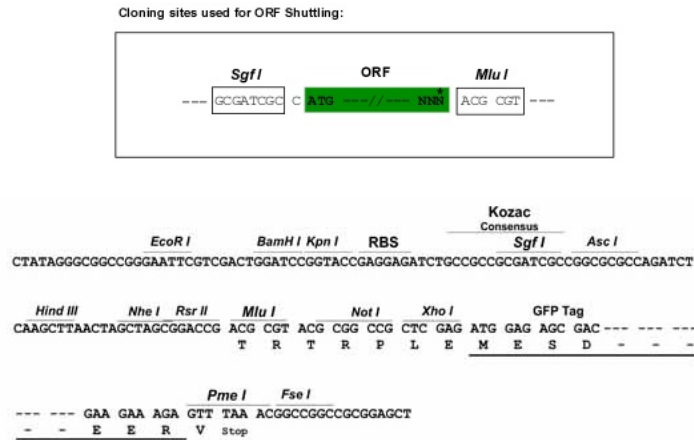
MKCPQPRSGARRIEERLHYLITTYLKFNNNNYMNMAEANNAFFAASETFHTPSLGDDEEFEIPPITPPPE
 DPALGMPDVLLPFQALSDPLPSQSEFTPQFPQSLDLPISITISRNLEVDQVGLHSSGLHMDQSHTQVSQ
 YRQDPSLIMRSIVHMTDAARSGVMPPAQLTTINQSQLSAQLGLNLGGASMPHTSPSPASKSATPSPSS
 INEEDADEANRAIGEKRAAPDSGKPKPKPKKKKKDPNEPQKPVSAAYLFFRDTQAAIKGQNPATFGEV
 SKIVASMWDSLGEEQKVYKRKTEAAKKEYLKALAAAYRASLVSKAAAESAEQTIKRSVQQLASTNLTS
 LLLNTPLSQHGTVSASPQLQQLPRSIAPKPLTMRLPMNQIVTSVTIAANMPSNIGAPLISSMGTTMVG
 SAPSTQVSPSVQTQQHQMLQQQQQQQQMQMQQQQLQQHQMHQIQQQMQQQHFQHHMQQLQQQQ
 HLQQQINQQQLQQQLQQRLQLQLQHMHQSQSPRQHSPPVSAQITSPIPAIGSPQASQQHQSISQST
 QTQVLSQVSIF

TRTRPLE - GFP Tag - V

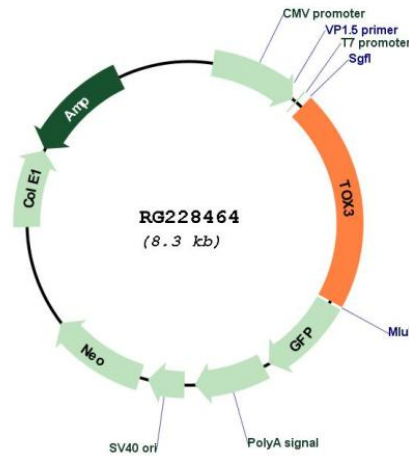
Restriction Sites:

SgfI-MluI

Cloning Scheme:



Plasmid Map:



ACCN: NM_001146188
 ORF Size: 1713 bp

OTI Disclaimer:	The molecular sequence of this clone aligns with the gene accession number as a point of reference only. However, individual transcript sequences of the same gene can differ through naturally occurring variations (e.g. polymorphisms), each with its own valid existence. This clone is substantially in agreement with the reference, but a complete review of all prevailing variants is recommended prior to use. More info
OTI Annotation:	This clone was engineered to express the complete ORF with an expression tag. Expression varies depending on the nature of the gene.
Components:	The ORF clone is ion-exchange column purified and shipped in a 2D barcoded Matrix tube containing 10ug of transfection-ready, dried plasmid DNA (reconstitute with 100 ul of water).
Reconstitution Method:	<ol style="list-style-type: none">1. Centrifuge at 5,000xg for 5min.2. Carefully open the tube and add 100ul of sterile water to dissolve the DNA.3. Close the tube and incubate for 10 minutes at room temperature.4. Briefly vortex the tube and then do a quick spin (less than 5000xg) to concentrate the liquid at the bottom.5. Store the suspended plasmid at -20°C. The DNA is stable for at least one year from date of shipping when stored at -20°C.
RefSeq:	NM_001146188.2
RefSeq Size:	3123 bp
RefSeq ORF:	1716 bp
Locus ID:	27324
UniProt ID:	O15405
Cytogenetics:	16q12.1
Gene Summary:	The protein encoded by this gene contains an HMG-box, indicating that it may be involved in bending and unwinding of DNA and alteration of chromatin structure. The C-terminus of the encoded protein is glutamine-rich due to CAG repeats in the coding sequence. A minor allele of this gene has been implicated in an elevated risk of breast cancer. Two transcript variants encoding different isoforms have been found for this gene.[provided by RefSeq, Apr 2009]