

## Product datasheet for **RG228448**

### ZNF415 (NM\_001164309) Human Tagged ORF Clone

#### Product data:

Product Type:	Expression Plasmids
Product Name:	ZNF415 (NM_001164309) Human Tagged ORF Clone
Tag:	TurboGFP
Symbol:	ZNF415
Synonyms:	Pact; ZfLp
Mammalian Cell Selection:	Neomycin
Vector:	pCMV6-AC-GFP (PS100010)
E. coli Selection:	Ampicillin (100 ug/mL)



[View online »](#)

**ORF Nucleotide Sequence:**

>RG228448 representing NM\_001164309  
 Red=Cloning site Blue=ORF Green=Tags(s)

TTTTGTAATACGACTCACTATAGGGCGGCCGGAATTCGTCGACTGGATCCGGTACCGAGGAGATCTGCC  
 GCC**CGGATCGCC**

ATGGCTTTTACTCAGTTGACATTCAGGGACGTGGCCATCGAATTCCTCAAGATGAGTGGAAATGCCTGA  
 ACTCTACACAGAGGACTTTATACAGGGATGTGATGTTGGAGAAGTACAGGAACCTGGTCTCCCTGGATCT  
 GTCTCGTAACTGTGTAATCAAGGAACTAGCACCACAACAGGAAGGTAACCCAGGAGAAGTATTCCACACA  
 GTGACATTGGAACAACATGAAAAACATGACATTGAAGAGTTTTGCTTCAGGGAAATCAAGAAAAAATAC  
 ACGACTTTGACTGTCAGTGGAGAGATGATGAAAGAAATGCAACAAAGTACTACGGCCCAAAAGAAAA  
 TCTTACTTGTAGGAGAGACCAACGCGATAGAAGAGGTATAGGAAACAAGTCTATTAACATCAGCTTGG  
 TTAAGCTTTTACCACATCCCCATGAACTGCAGCAGTTTCAAGCTGAAGGGAAAAATTTATGAATGTAACC  
 ATGTTGAGAAGTCTGTCAACCATGGTTCCTCAGTTTACCACCCCAATAATTTCTTCTACCATCAAAC  
 CCATGTTTCTAATAAATATGGGACTGATTTTCATCTGTTCTTACTACTCACACAAGAACAGAAATCATGC  
 ATTAGGAAAAACCTTACAGATATATTGAGTGCACAAAGCCTTGAATCATGGCTCACACATGACTGTAC  
 GTCAGGTAAGTCATTCTGGAGAGAAAGGATATAAATGTGATCTGTGTGGCAAGGCTTTAGTCAAAAATC  
 AAACCTTGCGCGTCATTGGAGAGTTCATACTGGAGAGAAACCATACAAATGTAATGAATGTGACAGAAGT  
 TTCAGTCGCAACTCATGCCTTGCCTACTACATCGGAGAGTTCACACTGGAGAGAAACCTTACAAATGTTATG  
 AGTGTGACAAGGCTTTCAGTCGAAATTCATGCCTTGCCTACTACATCAGAAAACTCATATTGGAGAGAAAC  
 TTACACATGTAAGAGGTGGCAAAAGCCTTTAGTGTGAGGTCAACACTTACCAACCATCAGGTAATTCAT  
 AGTGGCAAGAAACCTTACAAATGCAATGAATGTGGCAAGGTGTTCAAGTCAAGCTTCAAGCTTCAACTC  
 ATCAGAAATTCACACTGGGGAGAAACCATACAAGTGAATGAATGTTGTTAAAGTCTTCAAGTCAAGCTT  
 AAGCCTTGAAGGCAATTGGAGAATTCATACTGGAGAGAAACCTTACAAATGCAATGAATGTTGTAAGGTT  
 TTCAGTTACAATTCACACCTTGCAGTCACTCGGAGAGTTCATACTGGAGAGAAACCTTACAAGTGAATG  
 AGTGTGGAAAGCCTTTAGTGTGCATTGCAACTTAACTACCCATCAGGTATCCATACTGGAGAGAAAGCC  
 TTACAAATGTAATCAATGTGGCAAAAGGCTTCAAGTGTGATTCAAGCTTAACTACCCATCAGGTATCCAT  
 ACTGGAGAAAAACCTTACAAATGTAATGAGTGTGGCAAAATCCTTTAGTGTGCGCCAAACCTCACTAGAC  
 ATCAGATAATCCATACTGGAAAGAAACCTTACAAATGTAATGATTGTGGGAAGTCTTTAGTGTGCGCC  
 AAACCTTTCAGACATCAAATTATCCATACTAAGGAGAAACCTTATAAAAGAAAT

**ACGCGTACGCGGCCGCTCGAG** – GFP Tag – GTTTAA

**Protein Sequence:**

>RG228448 representing NM\_001164309  
 Red=Cloning site Green=Tags(s)

MAFTQLTFRDVAIEFSQDEWKCLNSTQRTLYRDVMLENYRNLVSLDL SRNCVIKELAPQQEGNPGEVFHT  
 VTLEQHEKHDIEEFCFREIKKKIHDFFDCQWRDDERNCKVTTAPKENLTCRRDQRDRRGIGNKSIKHQLG  
 LSFLPHPHLQQFQAEGKIYECNHVEKSVNHGSSVSPPIISSTIKTHVSNKYGTFICSSLLTQEYKSC  
 IREKPYRYIECDKALNHGSHMTVRQVSHSVEKGYKCDLGGKVFVQKSNLARHWRVHTGEKPYKNECDRS  
 FSRNSCLALHRRVHTGEKPYKCYECDKVF SRNSCLALHQQKTHIGEKPYTCKEKGAFSVRSTLTNHQVIH  
 SGKKPYKNECGKVFVQKSNLARHWRVHTGEKPYKNECGKVFVQKSNLARHWRVHTGEKPYKNECGKVF  
 FSYNSHLASHRRVHTGEKPYKNECGKAFVSHSNL TTHQVIHTGEKPYKNECGKVFVSHSSL TTHQVIH  
 TGEKPYKNECGKFSVSRPNL TRHQIHTGKKPYKCSDCGKFSVSRPNLFRHQIHTKEKPYKRN

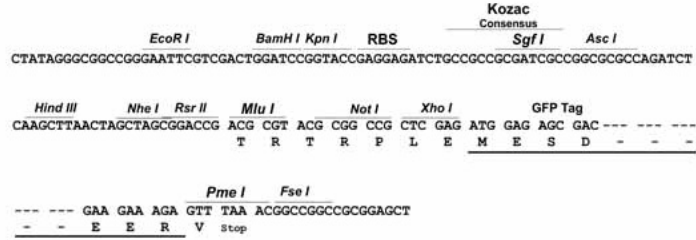
**TRTRPLE** – GFP Tag – V

**Restriction Sites:**

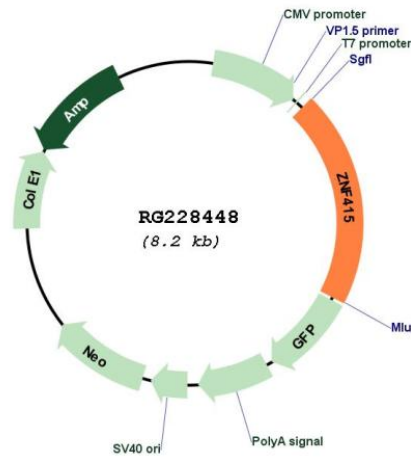
Sgfl-Mlul

Cloning Scheme:

Cloning sites used for ORF Shutting:



Plasmid Map:



<b>ACCN:</b>	NM_001164309
<b>ORF Size:</b>	1665 bp
<b>OTI Disclaimer:</b>	The molecular sequence of this clone aligns with the gene accession number as a point of reference only. However, individual transcript sequences of the same gene can differ through naturally occurring variations (e.g. polymorphisms), each with its own valid existence. This clone is substantially in agreement with the reference, but a complete review of all prevailing variants is recommended prior to use. <a href="#">More info</a>
<b>OTI Annotation:</b>	This clone was engineered to express the complete ORF with an expression tag. Expression varies depending on the nature of the gene.
<b>Components:</b>	The ORF clone is ion-exchange column purified and shipped in a 2D barcoded Matrix tube containing 10ug of transfection-ready, dried plasmid DNA (reconstitute with 100 ul of water).
<b>Reconstitution Method:</b>	<ol style="list-style-type: none"><li>1. Centrifuge at 5,000xg for 5min.</li><li>2. Carefully open the tube and add 100ul of sterile water to dissolve the DNA.</li><li>3. Close the tube and incubate for 10 minutes at room temperature.</li><li>4. Briefly vortex the tube and then do a quick spin (less than 5000xg) to concentrate the liquid at the bottom.</li><li>5. Store the suspended plasmid at -20°C. The DNA is stable for at least one year from date of shipping when stored at -20°C.</li></ol>
<b>RefSeq:</b>	<a href="#">NM_001164309.2</a>
<b>RefSeq Size:</b>	2418 bp
<b>RefSeq ORF:</b>	1668 bp
<b>Locus ID:</b>	55786
<b>UniProt ID:</b>	<a href="#">Q09FC8</a>
<b>Cytogenetics:</b>	19q13.42
<b>Protein Families:</b>	Transcription Factors
<b>Gene Summary:</b>	Involved in transcriptional regulation. Transcriptional activity differed among the various isoforms. All isoforms except isoform 3 seem to suppresses the transcriptional activities of AP-1 and p53/TP53.[UniProtKB/Swiss-Prot Function]