

## Product datasheet for **RG228447**

### **ROD1 (PTBP3) (NM\_001163790) Human Tagged ORF Clone**

#### **Product data:**

Product Type:	Expression Plasmids
Product Name:	ROD1 (PTBP3) (NM_001163790) Human Tagged ORF Clone
Tag:	TurboGFP
Symbol:	PTBP3
Synonyms:	ROD1
Mammalian Cell Selection:	Neomycin
Vector:	pCMV6-AC-GFP (PS100010)
E. coli Selection:	Ampicillin (100 ug/mL)



[View online »](#)

**ORF Nucleotide Sequence:**

>RG228447 representing NM\_001163790  
 Red=Cloning site Blue=ORF Green=Tags(s)

TTTTGTAATACGACTCACTATAGGGCGGCCGGAATTCGTCGACTGGATCCGGTACCGAGGAGATCTGCC  
 GCC**CGGATCGCC**

ATGGATGGTGTGTTACAGATCTTATAACAGTCGGTTAAAGCGGGATCTGATGAGCTTCTTTCTCTG  
 GCATCATTAAACGGACCTTTACCATGAATAGTTCTACTCCTTCTACAGGTGTGTATGCTAATGGGAATGA  
 CAGCAAGAAATTTAAACGAGATAGACCTCCCTGTTTCGCTTCCCGTGTCTCCATCTTCGAAAAATTCGA  
 TGTGATGTACCGAAGCAGAGATCATATCATTAGGTCTACCATTGGCAAAGTAACTAATCTTTGATGT  
 TGAAAGGAAAAAGCCAGGCTTTCTAGAAATGGCTTCTGAGGAAGCTGCCGTTACTATGGTGAATTATTA  
 CACTCCTATTACTCCTCACCTTCGAAGCCAGCCTGTTTATATTCAAGTATTCCAATCACAGAGAAGCTAAG  
 ACTGACAATCTACCTAATCAAGCTCGAGCCCAAGCTGCACTGCAGGCTGTGAGTCCGTTCAATCAGGAA  
 GCCTGGCCCTTTCTGGAGGTCTTCCAATGAAGGCACAGTCTACCTGGGCAGAGCCCTGTGCTTCAAT  
 AATTATTGAAAACCTCTTTACCCTGTTACCCTGGAAGTCTTTCATCAGATATTTCTAAATTTGGCACA  
 GTCTTGAAGATTACACCTTTACAAAGAATAATCAGTTTCAAGCCTTGCTTCAGTATGCTGACCCAGTAA  
 ATGCACATTATGCCAAAATGGCTCTGGATGGCCAGAATATCTATAATGCATGCTGCACTCTGCGCATTGA  
 CTTCTCCAAGCTCACCAGCCTAATGTGAAATATAATAATGACAAAAGCAGAGACTTCACTCGCTTAGAC  
 CTTCTACTGGTATGGCCAGCCATCCCTTGAACCCCTATGGCTGCTGCTTTTGGTGCACCCGGTATAA  
 TTTCTTACCATATGCAGGGGCTGCTGGATTTGCCCCAGCCATTGGATTTCTCAAGCTACAGGTCTATC  
 AGTTCAGCTGTTCTGGAGCTCTTGGTCTCTCAAAATCACCTCTTCTGCTGCTGCACTGGAAGGATGGCC  
 ATTCCTGGGCTAGTGGTATACCAGGAAATCTGTTCTACTCGTCACAAATCTCAATCCTGATCTTATCA  
 CACCATGGGCTTTTATCCTATTTGGAGTCTATGGTGTGATACATCGAGTGAAGATTATGTTAATAA  
 GAAAGAAAATGCCTTGGTTCAGATGGCGGATGCAAAATCAAGCTCAGCTAGCAATGAACCATCTAAGTGGT  
 CAGAGACTTTATGGGAAAGTGTTCGTGCTACACTGTCCAAACATCAAGCAGTACAGCTTCTCGAGAGG  
 GACAAGAAGACCAAGGTCTGACTAAGGATTTCAAGCAATAGTCTTTGCATCGCTTAAAAAGCCGGGCTC  
 TAAAAACTCCAGAATATCTTTCCACCATCAGCCACTCTGCATCTTTCCAACATTTCCCTTCTGTTACA  
 GTGGATGATCTGAAGAACCTTTTCATAGAAGCTGGATGTTCAAGTGAAGGCTTTTAAATCTTTAGAAA  
 ATCGCAAAATGGCGCTCATTCAATTGGGATCTGTGGAAGAAGCAATTCAGGCCCTCATTGAGCTTCATAA  
 CCATGACCTTGGAGAAAATCACCACCTCAGAGTTTCTTCTCAAATCTACAATC

**ACGCGTACGCGGCCGCTCGAG** – GFP Tag – GTTTAA

**Protein Sequence:**

>RG228447 representing NM\_001163790  
 Red=Cloning site Green=Tags(s)

MDGVVVDLITVGLKRGSDLELLSGIINGPFTMNSSTPSTGVYANGNDSKFKRDRPPCSPSRVLHLRKIP  
 CDVTEAEIISLGLPFGKVTNLLMLKGSQAFLEMASEEAAVTMVNYYPITPHLRSQPVIQYSNHRLEK  
 TDNLPNQARAQAALQAVSAVQSGSLALSGGPSNEGTVLPGQSPVLRRIIENLFYPVTLEVLHQIFSKFGT  
 VLKIITFTKNNQFQALLQYADPVNAHYAKMALDQNIYNACCTLRIDFSKLSLNVKYNNDKSRDFTRLD  
 LPTGDGQPSLEPPMAAAFAGPGIISPPYAGAAGFAPAIGFPQATGLSVPVAVPGALPLTITSSAVTGRMA  
 IPGASGIPGNSVLLVTNLNPDLITPHGLFILFGVYGDVHRVKIMFNKKNALVQMADANQAQLAMNHLSG  
 QRLYGKVLRAATLKHQAVQLPREGQEDQGLTKDFSNSPLHRFKKPGSKNFQNIFFPPSATLHLNIPPSVT  
 VDDLKSLFIEAGCSVKAFKFFQKDRKMALIQLSVVEEAIQALIELHNHDLGENHHLRVFSKSTI

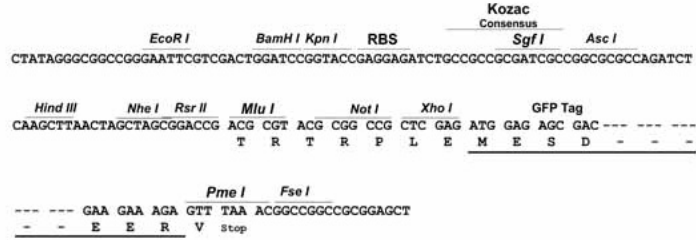
**TRTRPLE** – GFP Tag – V

**Restriction Sites:**

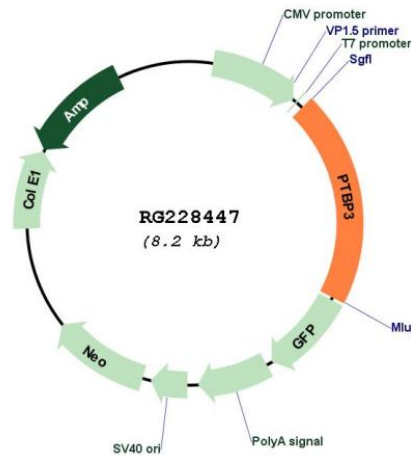
Sgfl-MluI

Cloning Scheme:

Cloning sites used for ORF Shutting:



Plasmid Map:



<b>ACCN:</b>	NM_001163790
<b>ORF Size:</b>	1665 bp
<b>OTI Disclaimer:</b>	The molecular sequence of this clone aligns with the gene accession number as a point of reference only. However, individual transcript sequences of the same gene can differ through naturally occurring variations (e.g. polymorphisms), each with its own valid existence. This clone is substantially in agreement with the reference, but a complete review of all prevailing variants is recommended prior to use. <a href="#">More info</a>
<b>OTI Annotation:</b>	This clone was engineered to express the complete ORF with an expression tag. Expression varies depending on the nature of the gene.
<b>Components:</b>	The ORF clone is ion-exchange column purified and shipped in a 2D barcoded Matrix tube containing 10ug of transfection-ready, dried plasmid DNA (reconstitute with 100 ul of water).
<b>Reconstitution Method:</b>	<ol style="list-style-type: none"><li>1. Centrifuge at 5,000xg for 5min.</li><li>2. Carefully open the tube and add 100ul of sterile water to dissolve the DNA.</li><li>3. Close the tube and incubate for 10 minutes at room temperature.</li><li>4. Briefly vortex the tube and then do a quick spin (less than 5000xg) to concentrate the liquid at the bottom.</li><li>5. Store the suspended plasmid at -20°C. The DNA is stable for at least one year from date of shipping when stored at -20°C.</li></ol>
<b>RefSeq:</b>	<a href="#">NM_001163790.2</a> , <a href="#">NP_001157262.1</a>
<b>RefSeq Size:</b>	7271 bp
<b>RefSeq ORF:</b>	1668 bp
<b>Locus ID:</b>	9991
<b>UniProt ID:</b>	<a href="#">O95758</a>
<b>Cytogenetics:</b>	9q32
<b>Protein Families:</b>	Druggable Genome
<b>Gene Summary:</b>	The protein encoded by this gene binds RNA and is a regulator of cell differentiation. The encoded protein preferentially binds to poly(G) and poly(U) sequences in vitro. Several transcript variants encoding different isoforms have been found for this gene. [provided by RefSeq, Oct 2011]